

PRODUCT DATASHEET

Recessed Down light
HYD-216R-7W 4000K



Application

- Hotel
- Mall
- Lobby
- Theater
- Airport

Benefits

- Flicker free.
- $Ra > 80$, restore the natural color
- Minimum Glare, more clear and comfortable
- Focus the light to highlight the highlights of the space

Features

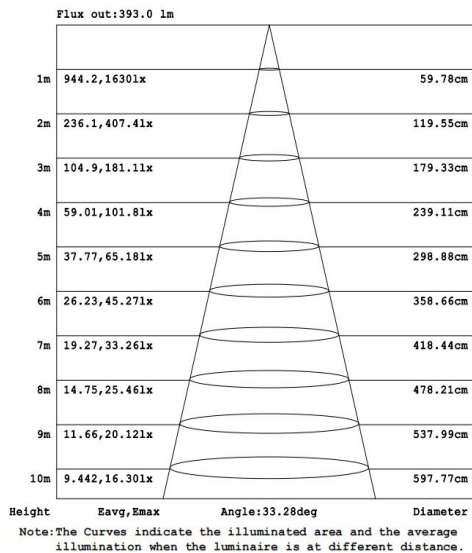
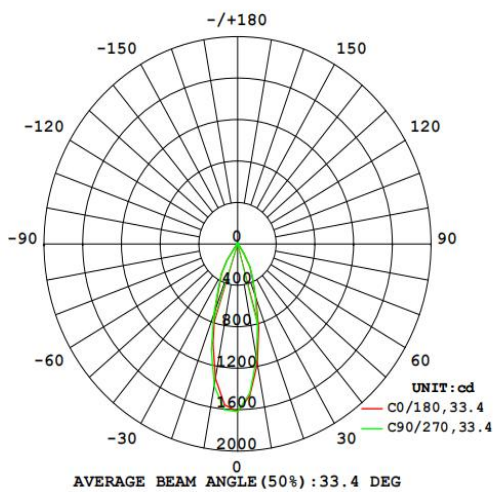
- Warranty 5 years
- Buckle design, easy and quick installation
- Clear Glass, High light transmission, High light efficiency
- Die-cast aluminum body for better heat dissipation, anti-corrosion

Electrical Data

Nominal wattage (W)	7W
Nominal Voltage (V)	220-240 V
Mains Frequency (Hz)	50
Nominal Current (mA)	60
LED Driver Current (mA)	300
LED Driver Voltage (V)	15-24
LED Driver Efficiency (%)	80%
Power Factor λ	0.5C
Total harmonic distortion (%)	...
Operating mode	External LED driver

Photometrical data

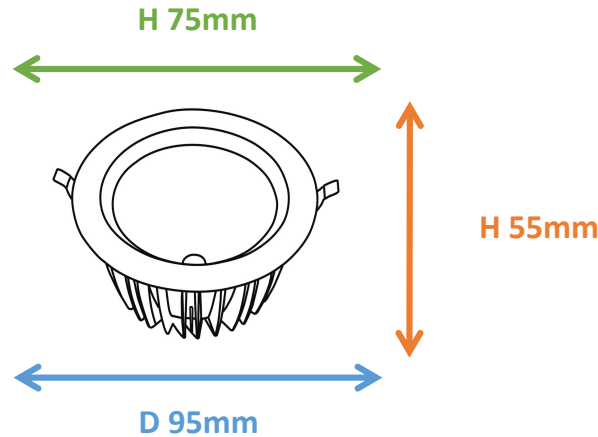
Luminous flux $\pm 10\%$ (lm)	741 lm
Luminous efficacy	102 lm/w
Color temperature	4000K
Light color (designation)	Natural White
Color rendering index Ra	≥ 80
Standard deviation of color matching	≤ 5 SDCM
Luminous intensity/cd	1617
Flickering	Flicker free
Beam angle	33 °



4000K

Dimensions & Weight

Diameter (mm)	95
Height (mm)	55
Product weight (g)	186



Material & Colors

Product color	Black housing / Sand white Frame
Housing color	Black
Body material	Aluminum
Cover material	Glass
Mercury content	0.0 mg

Application & Mounting

Ambient temperature range	-20°C~+45 °C
Temperature range at storage	-20°C~+60 °C
Type of connection	Screwless terminal
Type of protection	IP20
Dimmable	No
Mounting type	Recesse mounted
Mounting location	Ceiling
Application environment	Indoor
Cut size (mm)	75
LED module replaceable	Not replaceable
With light source	Yes

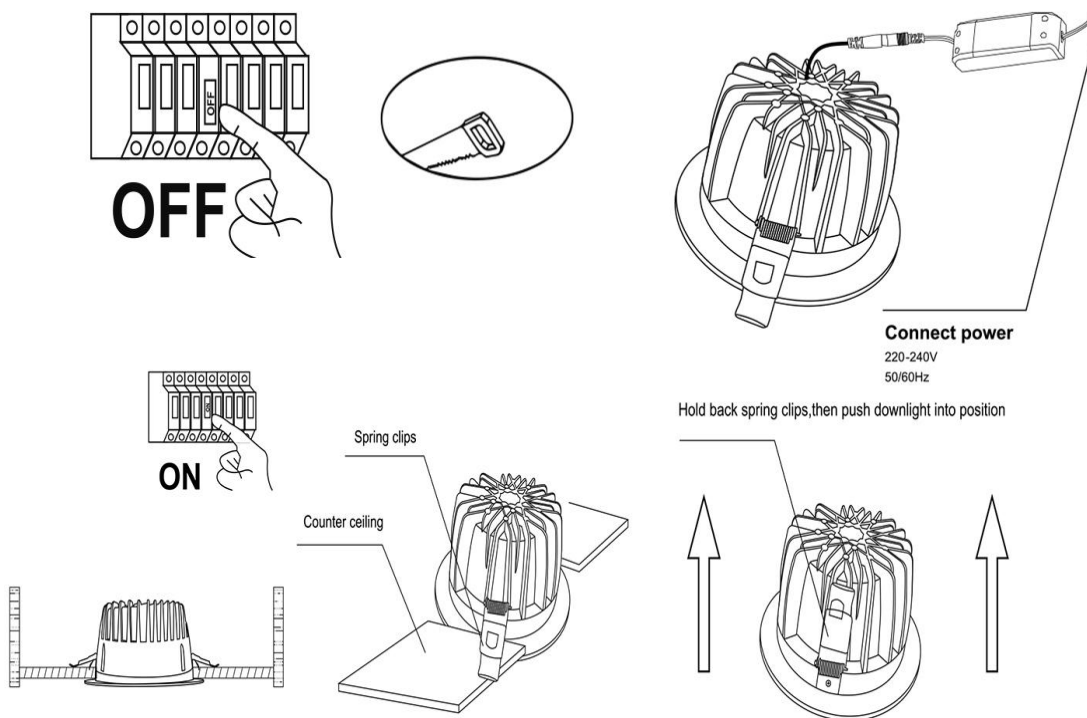
Certificates & Lifespan

Life (h)	50,000
Certificates	CB LVD EMC RoHS
Standards	ISO9001:2015

Logistical Data

Product code	Dimensions (L*W*H)	Pcs/ carton	G.W. kg	Volume CBM
HYD-216R-7W	64.5*25*32.5 cm	50	...	0.05241

Installation Method



Disclaimer

Subject to change without notice. Errors and omission excepted. Always make sure to use the most recent release