

## PRODUCT DATASHEET

Minimum Glare Recessed mounted Downlight  
HYD-219C-40W-3000K /4000K / 6000K



### Application

- Hotel
- Mall
- Airport
- Lobby
- Theater

### Benefits

- Minimum Glare, more clear and comfortable
- Flicker free.
- Low lumen depreciation.
- Special material of reflectors ( 4 different colors to choice)



### Features

- Warranty 5 years
- Yellowing-resistant diffuser (PC)
- Buckle design, easy and quick installation
- Die-cast aluminum body for better heat dissipation, anti-corrosion, and easy maintain

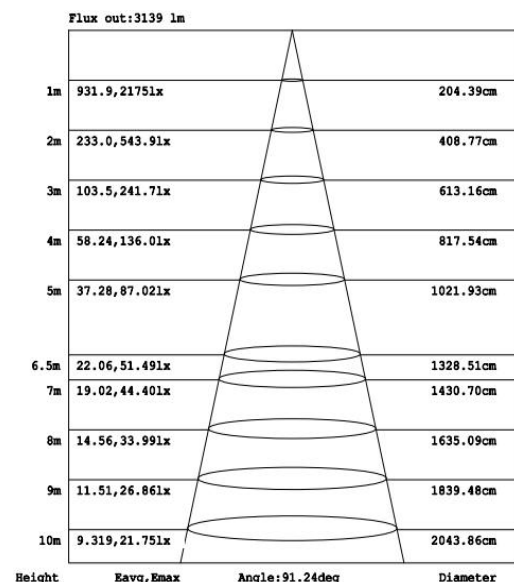
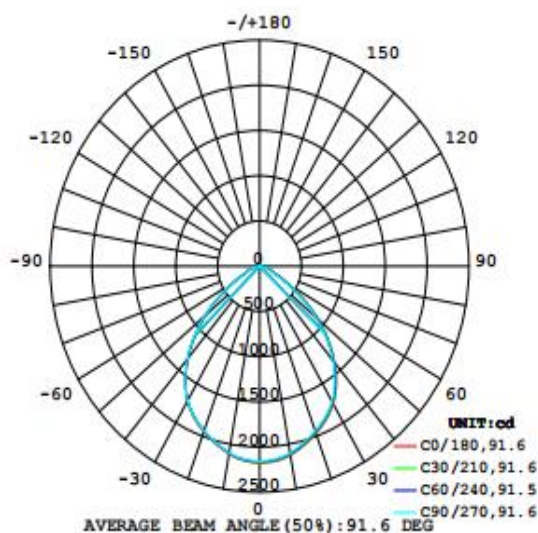
## Electrical Data

Nominal wattage (W)	<b>40W</b>
Nominal Voltage (V)	220-240 V
Mains Frequency (Hz)	50/60 Hz
Nominal Current (mA)	0.27A Max
LED Driver Current (mA)	1000 mA
LED Driver Voltage (V)	24-40 Vdc
LED Driver Efficiency (%)	89%
Power factor $\lambda$	0.95
Total harmonic distortion (%)	<5%
Operating mode	External LED driver

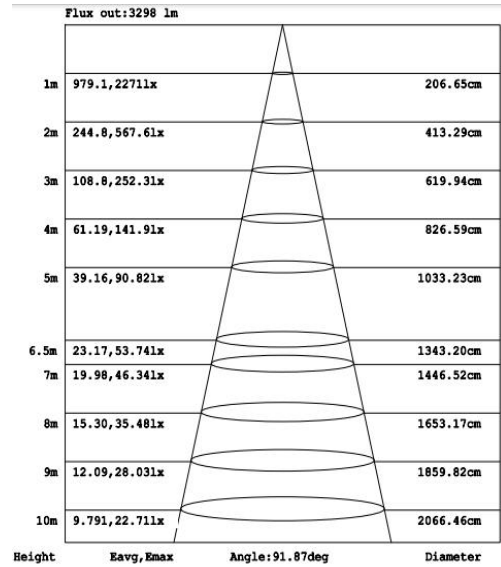
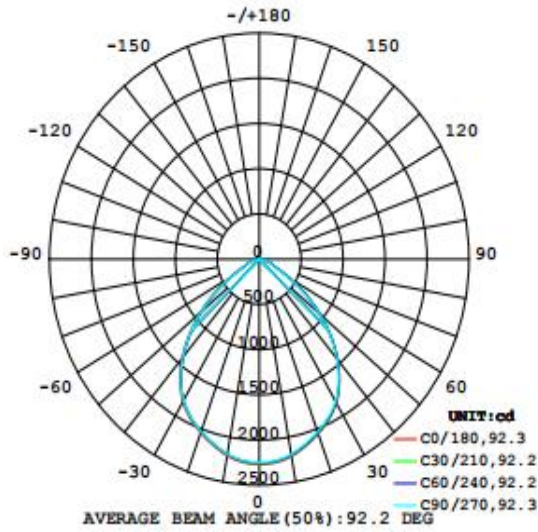
## Photometrical data

Luminous flux $\pm 10\%$ (lm)	4355	4587	4801
Luminous efficacy	121 lm/w	126 lm/w	126 lm/w
Color temperature	<b>3000K</b>	<b>4000K</b>	<b>6000K</b>
Light color (designation)	Warm White	Nature White	Cold White
Color rendering index Ra	$\geq 80$		
Standard deviation of color matching	$\leq 5$ SDCM		
Luminous intensity/cd	2175	2271	2346
Flickering	Flicker free		
Beam angle	92°	92°	92°

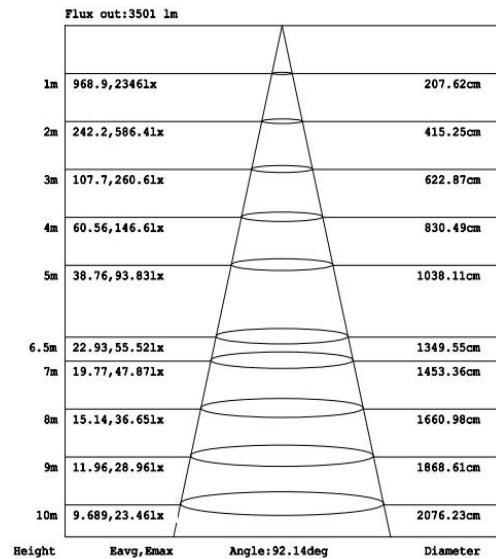
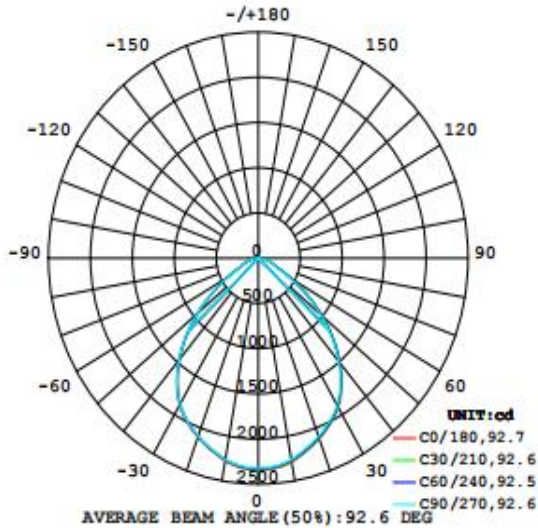
**3000K**



**4000K**

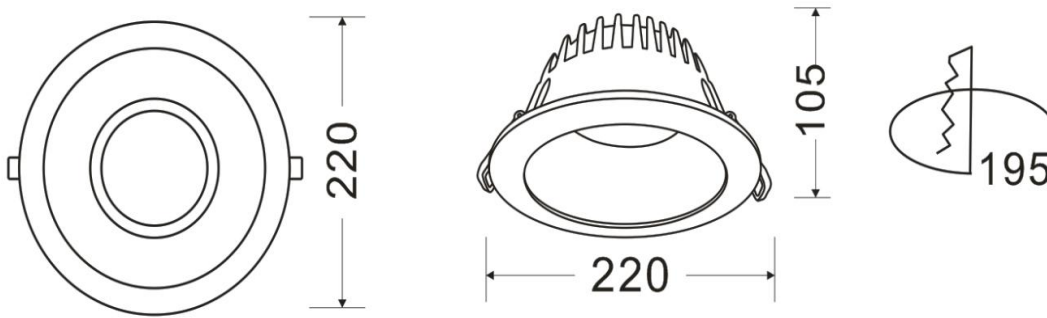


**6000K**



**Dimensions & Weight**

Diameter (mm)	220
Height (mm)	105
Product weight (g)	853



## Material & Colors

Product color	Black heat sink / White frame
Housing color	Black
Body material	Aluminum
LGP material	PC
Reflector color	White
Mercury content	0.0 mg

## Application & Mounting

Ambient temperature range	-10-45 °C
Temperature range at storage	-25-60 °C
Type of connection	Screwless terminal
Type of protection	IP20 / IP44
Dimmable	No
Mounting type	Recesse mounted
Mounting location	Ceiling
Application environment	Indoor
Cut size (mm)	195
LED module replaceable	Not replaceable
With light source	Yes

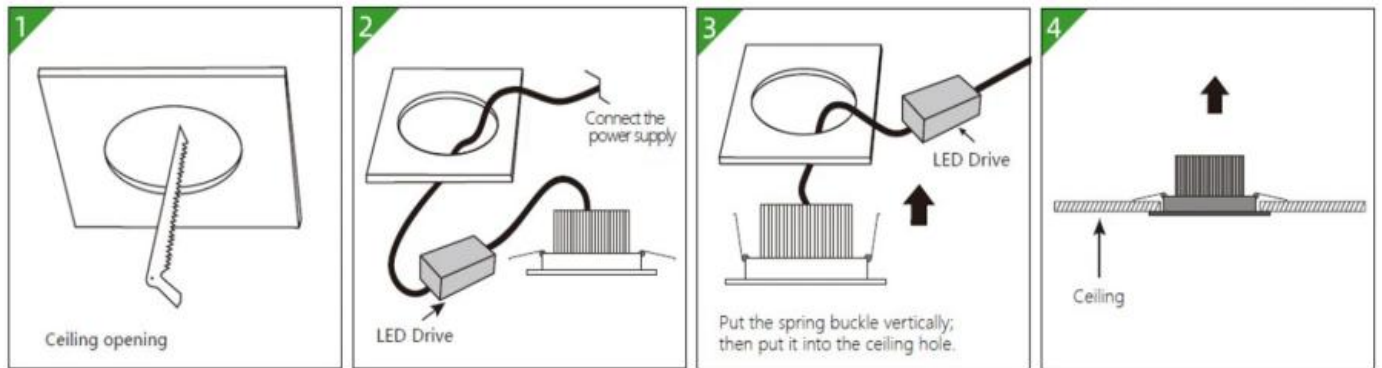
## Certificates & Lifespan

Life (h)	50000
Number of switching cycles	25000
Certificates	CB CE LVD EMC
Standards	ISO9001:2015

## Logistical Data

Product code	Dimensions (L*W*H)	Pcs/ carton	G.W. kg	Volume CBM
HYD-219C-40W	62*49*49.5 cm	20	...	0.15038

## Installation Method



## Disclaimer

Subject to change without notice. Errors and omission excepted. Always make sure to use the most recent release