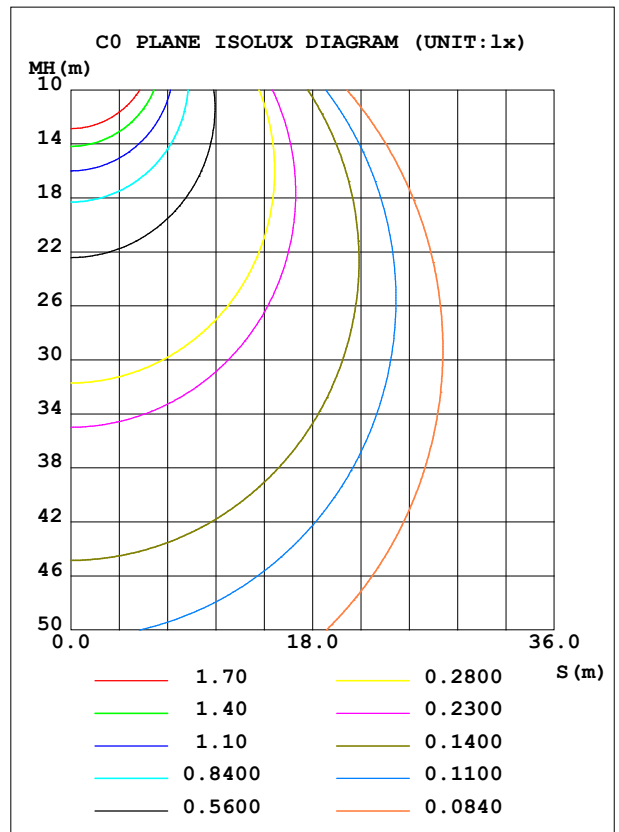
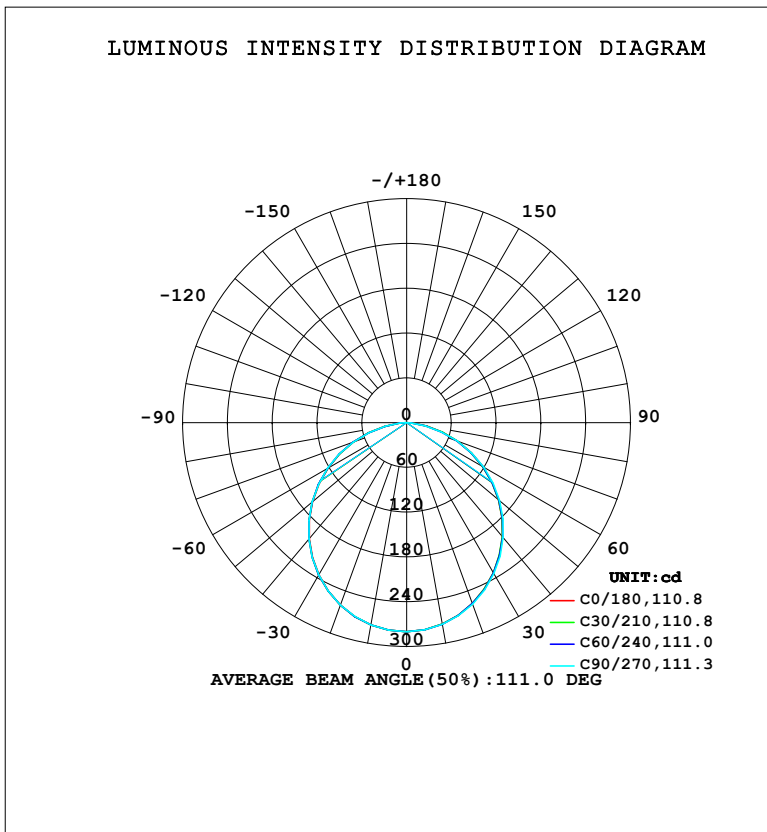


LUMINAIRE PHOTOMETRIC TEST REPORT

Test:U:220.42V I:0.0675A P:8.4287W PF:0.5662 Freq:50.00Hz Lamp Flux:785.348x1 lm		
NAME:	TYPE:	WEIGHT:
SPEC.:	DIM.:	SERIAL No.:
MFR.: EVERFINE	SUR.:	Shielding Angle:

DATA OF LAMP		PHOTOMETRIC DATA				Eff: 93.18 lm/W
MODEL	102BR	I _{max} (cd)	280.2	S/MH (C0/180)	1.25	
NOMINAL POWER (W)	9	LOR (%)	100.0	S/MH (C90/270)	1.25	
RATED VOLTAGE (V)	220	TOTAL FLUX (lm)	785.35	η UP, DN (C0-180)	0.0, 49.7	
NOMINAL FLUX (lm)	785.348	CIE CLASS	DIRECT	η UP, DN (C180-360)	0.0, 50.3	
LAMPS INSIDE	1	η up (%)	0.0	CIBSE SHR NOM	1.25	
TEST VOLTAGE (V)	219.5	η down (%)	100.0	CIBSE SHR MAX	1.35	



C Range: 0 - 360DEG
 C Interval: 15.0DEG
 Test Speed: HIGH
 Temperature: 25.3°C
 Operators: DAMIN
 Test Date: 2024-01-24

γ Range: 0 - 90DEG
 γ Interval: 5.0DEG
 Test System: EVERFINE GO-2000B_V1 SYSTEM V2.00.473
 Humidity: 65.0%
 Test Distance: 9.401m [K=1.0000]
 Remarks:

ZONAL FLUX DIAGRAM

ZONAL FLUX DIAGRAM:

γ	C0	C45	C90	C135	C180	C225	C270	C315	γ	Φ zone	Φ total	%lum, lamp
10	274.1	274.4	274.6	275.1	275.3	275.3	275.2	274.5	0- 10	26.49	26.49	3.37,3.37
20	257.8	258.2	258.7	259.8	260.1	260.1	260.0	258.8	10- 20	75.68	102.2	13,13
30	232.5	232.9	233.8	235.2	235.5	235.6	235.6	233.9	20- 30	114.2	216.4	27.6,27.6
40	199.6	200.1	201.1	202.8	203.2	203.3	203.5	201.5	30- 40	137.0	353.4	45,45
50	161.0	161.4	162.5	164.2	164.7	165.0	165.3	163.2	40- 50	141.4	494.8	63,63
60	118.1	118.4	119.3	121.1	121.7	121.9	122.5	120.2	50- 60	127.2	622.0	79.2,79.2
70	72.85	72.81	72.25	75.21	75.96	76.39	76.59	74.91	60- 70	96.66	718.6	91.5,91.5
80	28.06	26.60	25.28	28.74	30.50	29.89	28.88	29.26	70- 80	54.10	772.7	98.4,98.4
90	0.4793	0.4753	0.4701	0.4646	0.5571	0.5354	0.5484	0.5551	80- 90	12.62	785.3	100,100
100									90-100			
110									100-110			
120									110-120			
130									120-130			
140									130-140			
150									140-150			
160									150-160			
170									160-170			
180									170-180			
DEG	LUMINOUS INTENSITY:cd									UNIT:lm		

Conical surface Flux(90deg): 424.69 lm

%lum = 54.1%

%lamp = 54.1%

Conical surface Flux(130deg): 674.99 lm

%lum = 85.9%

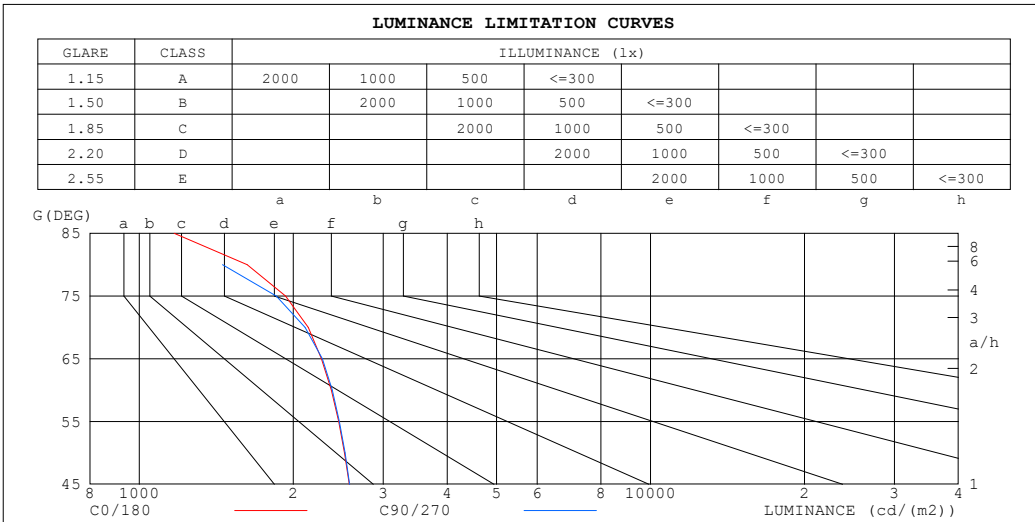
%lamp = 85.9%

C Range: 0 - 360DEG
 C Interval: 15.0DEG
 Test Speed: HIGH
 Temperature:25.3°C
 Operators:DAMIN
 Test Date:2024-01-24

γ Range: 0 - 90DEG
 γ Interval: 5.0DEG
 Test System:EVERFINE GO-2000B_V1 SYSTEM V2.00.473
 Humidity:65.0%
 Test Distance:9.401m [K=1.0000]
 Remarks:

LUMINANCE LIMITATION CURVES

Test:U:220.42V I:0.0675A P:8.4287W PF:0.5662 Freq:50.00Hz Lamp Flux:785.348x1 lm		
NAME:	TYPE:	WEIGHT:
SPEC.:	DIM.:	SERIAL No.:
MFR.: EVERFINE	SUR.:	Shielding Angle:



LUMINANCE cd/(m2)		
G (DEG)	C0/180	C90/270
85	1170	644
80	1624	1455
75	1931	1854
70	2141	2110
65	2272	2279
60	2374	2384
55	2453	2463
50	2518	2527
45	2572	2579

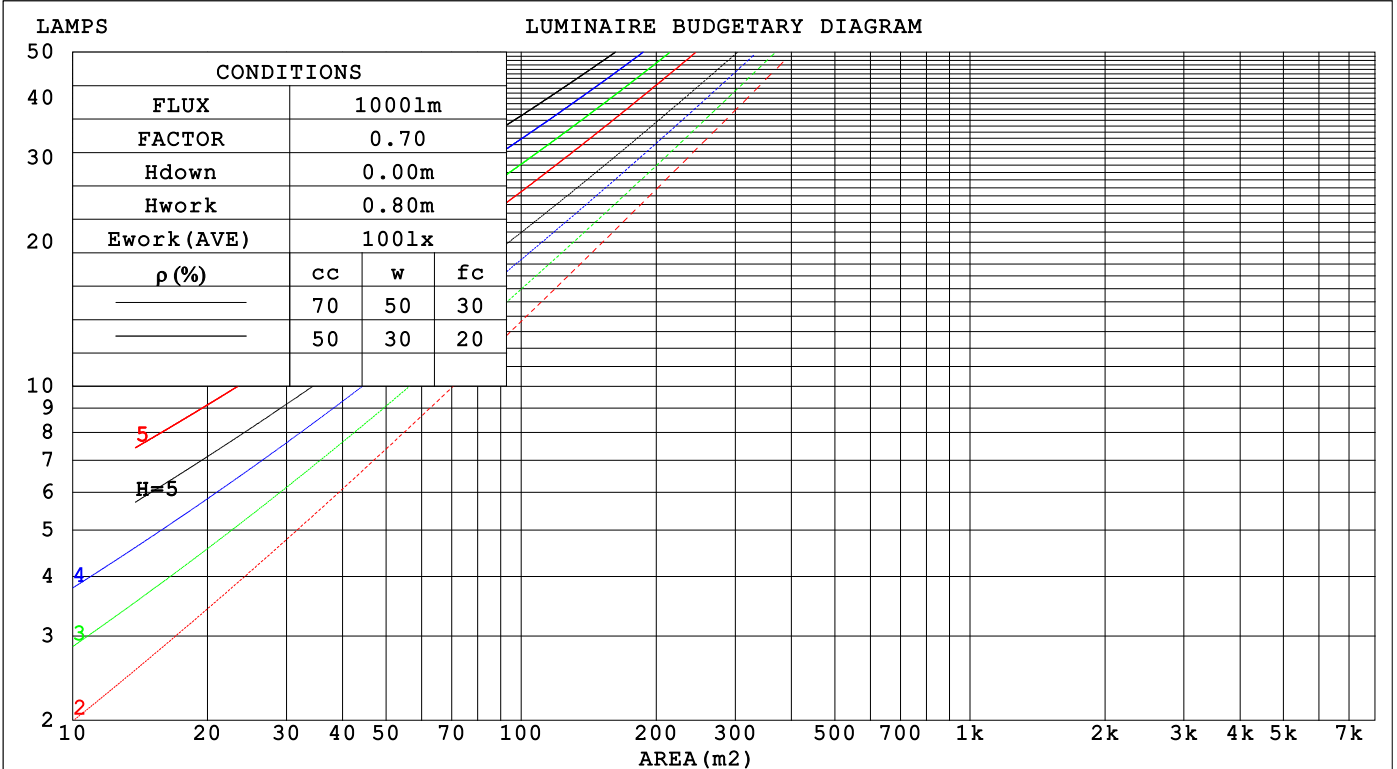
C Range: 0 - 360DEG
 C Interval: 15.0DEG
 Test Speed: HIGH
 Temperature:25.3°C
 Operators:DAMIN
 Test Date:2024-01-24

γ Range: 0 - 90DEG
 γ Interval: 5.0DEG
 Test System:EVERFINE GO-2000B_V1 SYSTEM V2.00.473
 Humidity:65.0%
 Test Distance:9.401m [K=1.0000]
 Remarks:

CU AND LUMINAIRE BUDGETARY ESTIMATE DIAGRAM

Test:U:220.42V I:0.0675A P:8.4287W PF:0.5662 Freq:50.00Hz Lamp Flux:785.348x1 lm		
NAME:	TYPE:	WEIGHT:
SPEC.:	DIM.:	SERIAL No.:
MFR.: EVERFINE	SUR.:	Shielding Angle:

ρcc	80%			70%			50%			30%			10%			0
ρw	50%	30%	10%	50%	30%	10%	50%	30%	10%	50%	30%	10%	50%	30%	10%	0
ρfc	20%			20%			20%			20%			20%			0
RCR	RCR:Room Cavity Ratio Coefficients of Utilization(CU)															
0.0	1.19	1.19	1.19	1.16	1.16	1.16	1.11	1.11	1.11	1.06	1.06	1.06	1.02	1.02	1.02	1.00
1.0	1.04	.00	.96	1.02	.98	.94	.98	.94	.91	.94	.91	.89	.90	.88	.86	.84
2.0	.91	.84	.78	.89	.83	.77	.85	.80	.75	.82	.78	.74	.79	.75	.72	.70
3.0	.80	.71	.65	.78	.70	.64	.75	.69	.63	.72	.67	.62	.70	.65	.61	.59
4.0	.70	.62	.55	.69	.61	.55	.67	.59	.54	.64	.58	.53	.62	.57	.52	.50
5.0	.63	.54	.47	.62	.53	.47	.60	.52	.46	.58	.51	.46	.56	.50	.45	.43
6.0	.57	.48	.41	.56	.47	.41	.54	.46	.41	.52	.45	.40	.51	.45	.40	.38
7.0	.51	.43	.36	.51	.42	.36	.49	.41	.36	.48	.41	.36	.46	.40	.35	.33
8.0	.47	.38	.32	.46	.38	.32	.45	.37	.32	.44	.37	.32	.42	.36	.32	.30
9.0	.43	.35	.29	.42	.35	.29	.41	.34	.29	.40	.34	.29	.39	.33	.29	.27
10.0	.40	.32	.26	.39	.32	.26	.38	.31	.26	.37	.31	.26	.36	.30	.26	.24



C Range: 0 - 360DEG
 C Interval: 15.0DEG
 Test Speed: HIGH
 Temperature:25.3°C
 Operators:DAMIN
 Test Date:2024-01-24

γ Range: 0 - 90DEG
 γ Interval: 5.0DEG
 Test System:EVERFINE GO-2000B_V1 SYSTEM V2.00.473
 Humidity:65.0%
 Test Distance:9.401m [K=1.0000]
 Remarks:

WEC AND CCEC

Test:U:220.42V I:0.0675A P:8.4287W PF:0.5662 Freq:50.00Hz								
Lamp Flux:785.348x1 lm								
NAME:			TYPE:			WEIGHT:		
SPEC.:			DIM.:			SERIAL No.:		
MFR.: EVERFINE			SUR.:			Shielding Angle:		

ρ_{CC}	80%			70%			50%			30%			10%			0
ρ_w	50%	30%	10%	50%	30%	10%	50%	30%	10%	50%	30%	10%	50%	30%	10%	0
ρ_{fc}	20%			20%			20%			20%			20%			0
RCR	RCR:Room Cavity Ratio						Wall Exitance Coefficients (WEC)									
0.0																
1.0	.306	.174	.055	.299	.171	.054	.286	.164	.052	.274	.158	.051	.262	.152	.049	
2.0	.289	.159	.049	.283	.156	.048	.272	.151	.047	.261	.146	.046	.251	.142	.045	
3.0	.268	.143	.043	.263	.141	.042	.253	.137	.042	.243	.133	.041	.234	.130	.040	
4.0	.248	.129	.038	.243	.127	.038	.234	.124	.037	.226	.121	.037	.218	.118	.036	
5.0	.230	.117	.034	.225	.116	.034	.217	.113	.033	.210	.111	.033	.202	.108	.033	
6.0	.213	.107	.031	.209	.106	.030	.202	.103	.030	.195	.101	.030	.189	.099	.030	
7.0	.198	.098	.028	.195	.097	.028	.188	.095	.027	.182	.093	.027	.177	.092	.027	
8.0	.185	.091	.025	.182	.090	.025	.176	.088	.025	.171	.087	.025	.166	.085	.025	
9.0	.174	.084	.023	.171	.083	.023	.166	.082	.023	.161	.081	.023	.156	.079	.023	
10.0	.163	.078	.022	.161	.078	.022	.156	.076	.022	.152	.075	.021	.148	.074	.021	

ρ_{CC}	80%			70%			50%			30%			10%			0
ρ_w	50%	30%	10%	50%	30%	10%	50%	30%	10%	50%	30%	10%	50%	30%	10%	0
ρ_{fc}	20%			20%			20%			20%			20%			0
RCR	RCR:Room Cavity Ratio						Ceiling Cavity Exitance Coefficients (CCEC)									
0.0	.190	.190	.190	.163	.163	.163	.111	.111	.111	.064	.064	.064	.020	.020	.020	
1.0	.180	.156	.135	.154	.134	.116	.105	.092	.080	.061	.053	.047	.019	.017	.015	
2.0	.172	.132	.098	.147	.114	.085	.101	.079	.059	.058	.046	.035	.019	.015	.011	
3.0	.164	.114	.075	.141	.099	.065	.097	.068	.045	.056	.040	.027	.018	.013	.009	
4.0	.157	.101	.058	.134	.087	.051	.092	.061	.036	.053	.036	.021	.017	.012	.007	
5.0	.149	.091	.047	.128	.078	.041	.088	.055	.029	.051	.032	.017	.016	.010	.006	
6.0	.142	.082	.039	.122	.071	.034	.084	.050	.024	.049	.029	.014	.016	.010	.005	
7.0	.135	.075	.033	.116	.065	.029	.080	.046	.021	.047	.027	.012	.015	.009	.004	
8.0	.129	.069	.029	.111	.060	.025	.077	.042	.018	.045	.025	.011	.014	.008	.004	
9.0	.123	.065	.025	.106	.056	.022	.073	.039	.016	.043	.023	.009	.014	.008	.003	
10.0	.117	.060	.022	.101	.052	.020	.070	.037	.014	.041	.022	.008	.013	.007	.003	

C Range: 0 - 360DEG
 C Interval: 15.0DEG
 Test Speed: HIGH
 Temperature:25.3°C
 Operators:DAMIN
 Test Date:2024-01-24

γ Range: 0 - 90DEG
 γ Interval: 5.0DEG
 Test System:EVERFINE GO-2000B_V1 SYSTEM V2.00.473
 Humidity:65.0%
 Test Distance:9.401m [K=1.0000]
 Remarks:

UGR(Unified Glare Rating) Table

Test:U:220.42V I:0.0675A P:8.4287W PF:0.5662 Freq:50.00Hz										
Lamp Flux:785.348x1 lm										
NAME:			TYPE:				WEIGHT:			
SPEC.:			DIM.:				SERIAL No.:			
MFR.: EVERFINE			SUR.:				Shielding Angle:			
ceiling/cavity	0.7	0.7	0.5	0.5	0.3	0.7	0.7	0.5	0.5	0.3
walls	0.5	0.3	0.5	0.3	0.3	0.5	0.3	0.5	0.3	0.3
working plane	0.2	0.2	0.2	0.2	0.2	0.2	0.2	0.2	0.2	0.2
Room dimensions	Viewed crosswise					Viewed endwise				
x = 2H y = 2H	16.8	18.3	17.1	18.5	18.7	16.8	18.3	17.1	18.5	18.7
3H	18.3	19.7	18.6	19.9	20.1	18.3	19.7	18.6	19.9	20.1
4H	18.8	20.1	19.1	20.4	20.7	18.8	20.1	19.1	20.4	20.6
6H	19.1	20.4	19.5	20.7	20.9	19.0	20.3	19.4	20.6	20.9
8H	19.2	20.4	19.5	20.7	21.0	19.0	20.2	19.4	20.5	20.8
12H	19.2	20.4	19.5	20.6	21.0	19.0	20.2	19.3	20.5	20.8
4H 2H	17.4	18.7	17.7	19.0	19.2	17.4	18.7	17.7	19.0	19.3
3H	19.0	20.2	19.4	20.5	20.8	19.0	20.2	19.4	20.5	20.8
4H	19.7	20.8	20.1	21.1	21.4	19.6	20.7	20.0	21.0	21.4
6H	20.1	21.1	20.5	21.4	21.8	20.0	20.9	20.4	21.3	21.7
8H	20.2	21.0	20.6	21.4	21.8	20.0	20.9	20.4	21.2	21.6
12H	20.2	21.0	20.6	21.4	21.8	20.0	20.8	20.4	21.2	21.6
8H 4H	19.9	20.8	20.3	21.2	21.5	19.9	20.7	20.3	21.1	21.5
6H	20.4	21.1	20.8	21.5	22.0	20.3	21.0	20.7	21.4	21.9
8H	20.5	21.1	21.0	21.6	22.0	20.3	21.0	20.8	21.4	21.8
12H	20.6	21.1	21.0	21.6	22.1	20.3	20.9	20.8	21.3	21.8
12H 4H	19.9	20.7	20.3	21.1	21.5	19.9	20.7	20.3	21.0	21.5
6H	20.4	21.0	20.9	21.5	21.9	20.3	20.9	20.8	21.4	21.8
8H	20.5	21.1	21.0	21.5	22.0	20.3	20.9	20.8	21.3	21.8
Variations with the observer position at spacings(CIE Pub.117):										
S = 1.0H	+ 0.1 / - 0.2					+ 0.1 / - 0.2				
1.5H	+ 0.2 / - 0.3					+ 0.2 / - 0.3				
2.0H	+ 0.3 / - 0.4					+ 0.3 / - 0.4				

CIE Pub.117, 785.3 lm Total Lamp Luminous Flux Correct (8log(F/F0) = -0.8)
 Area: 0.1 m2

C Range: 0 - 360DEG
 C Interval: 15.0DEG
 Test Speed: HIGH
 Temperature:25.3°C
 Operators:DAMIN
 Test Date:2024-01-24

γ Range: 0 - 90DEG
 γ Interval: 5.0DEG
 Test System:EVERFINE GO-2000B_V1 SYSTEM V2.00.473
 Humidity:65.0%
 Test Distance:9.401m [K=1.0000]
 Remarks:

UTILIZATION FACTORS TABLE

Test:U:220.42V I:0.0675A P:8.4287W PF:0.5662 Freq:50.00Hz Lamp Flux:785.348x1 lm		
NAME:	TYPE:	WEIGHT:
SPEC.:	DIM.:	SERIAL No.:
MFR.: EVERFINE	SUR.:	Shielding Angle:

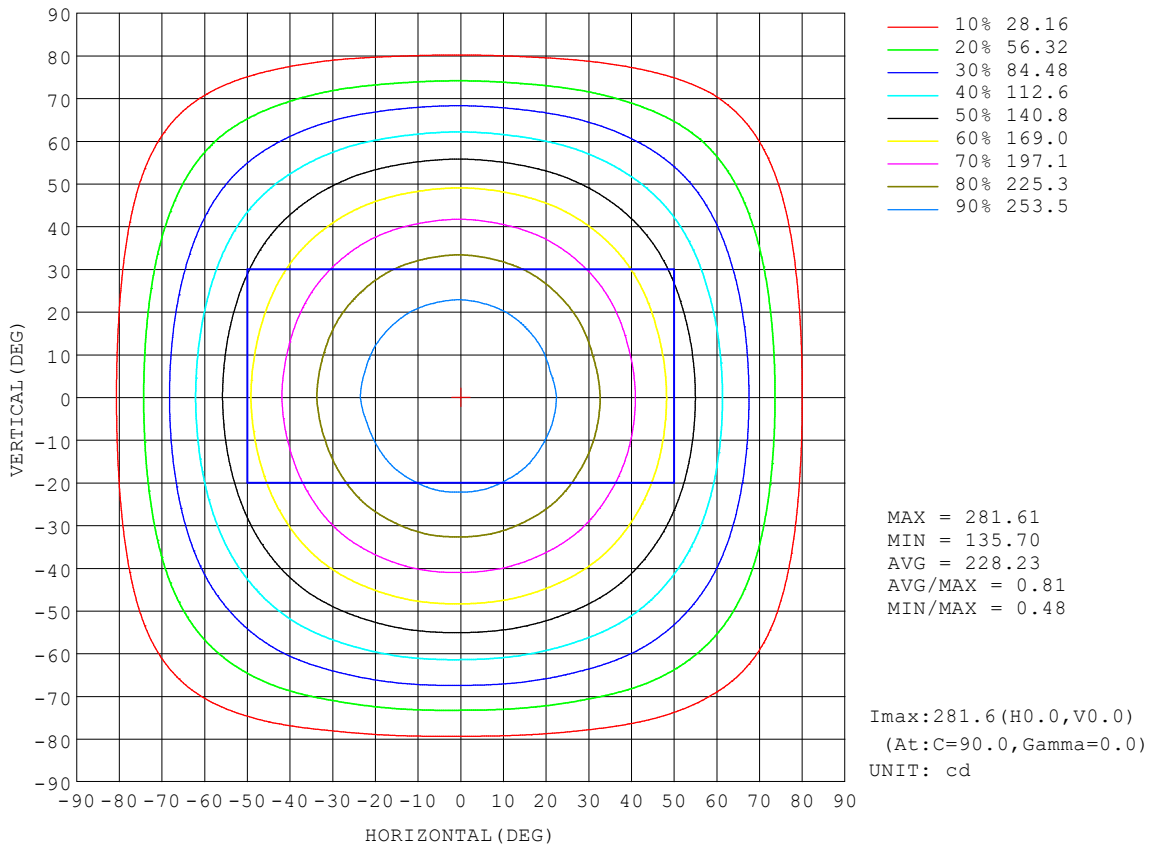
REFLECTANCE										
Ceiling	0.8	0.8	0.8	0.7	0.7	0.7	0.5	0.5	0.5	0
Walls	0.7	0.5	0.3	0.7	0.5	0.3	0.7	0.5	0.3	0
Working plane	0.2	0.2	0.2	0.2	0.2	0.2	0.2	0.2	0.2	0
ROOM INDEX	UTILIZATION FACTORS (PERCENT) $k(RI) \times RCR = 5$									
k = 0.60	58	46	39	57	46	39	56	45	39	32
0.80	68	56	49	67	56	49	65	55	48	41
1.00	76	65	58	75	65	58	73	66	57	50
1.25	83	73	66	82	72	65	79	71	65	57
1.50	88	78	72	87	78	71	84	76	70	62
2.00	95	87	80	93	85	79	90	83	78	70
2.50	99	91	85	97	90	84	93	87	83	74
3.00	102	96	90	100	94	89	96	91	87	78
4.00	106	101	96	104	99	95	100	96	92	83
5.00	109	104	100	106	102	98	102	98	95	86
ROOM INDEX	UF(total)									Direct
According to DIN EN 13032-2 2004			Suspended				SHRNOM = 1.25			

C Range: 0 - 360DEG
 C Interval: 15.0DEG
 Test Speed: HIGH
 Temperature:25.3°C
 Operators:DAMIN
 Test Date:2024-01-24

γ Range: 0 - 90DEG
 γ Interval: 5.0DEG
 Test System:EVERFINE GO-2000B_V1 SYSTEM V2.00.473
 Humidity:65.0%
 Test Distance:9.401m [K=1.0000]
 Remarks:

ISOCANDELA DIAGRAM

Test:U:220.42V I:0.0675A P:8.4287W PF:0.5662 Freq:50.00Hz Lamp Flux:785.348x1 lm		
NAME:	TYPE:	WEIGHT:
SPEC.:	DIM.:	SERIAL No.:
MFR.: EVERFINE	SUR.:	Shielding Angle:

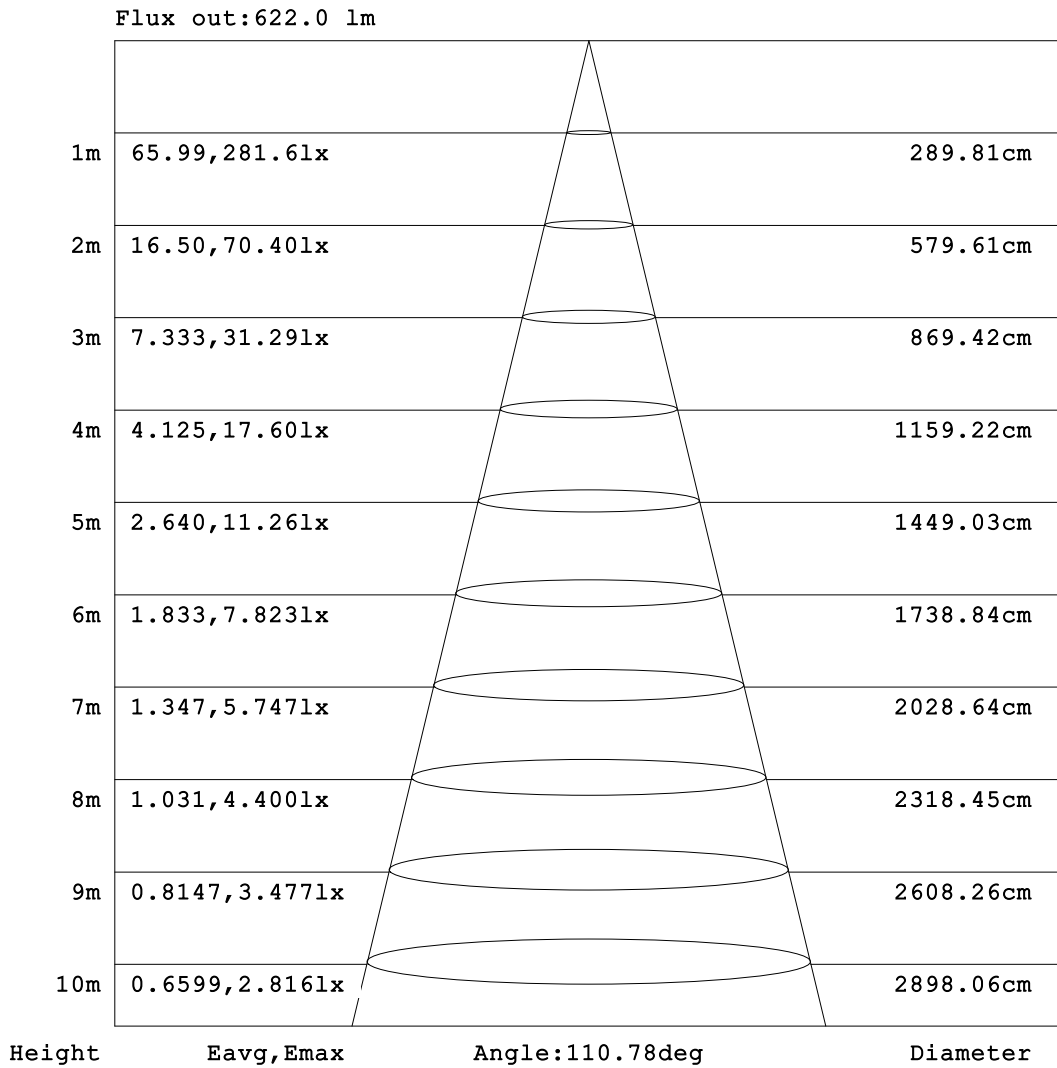


C Range: 0 - 360DEG
 C Interval: 15.0DEG
 Test Speed: HIGH
 Temperature:25.3°C
 Operators:DAMIN
 Test Date:2024-01-24

γ Range: 0 - 90DEG
 γ Interval: 5.0DEG
 Test System:EVERFINE GO-2000B_V1 SYSTEM V2.00.473
 Humidity:65.0%
 Test Distance:9.401m [K=1.0000]
 Remarks:

AAI Figure

Test:U:220.42V I:0.0675A P:8.4287W PF:0.5662 Freq:50.00Hz Lamp Flux:785.348x1 lm		
NAME:	TYPE:	WEIGHT:
SPEC.:	DIM.:	SERIAL No.:
MFR.: EVERFINE	SUR.:	Shielding Angle:



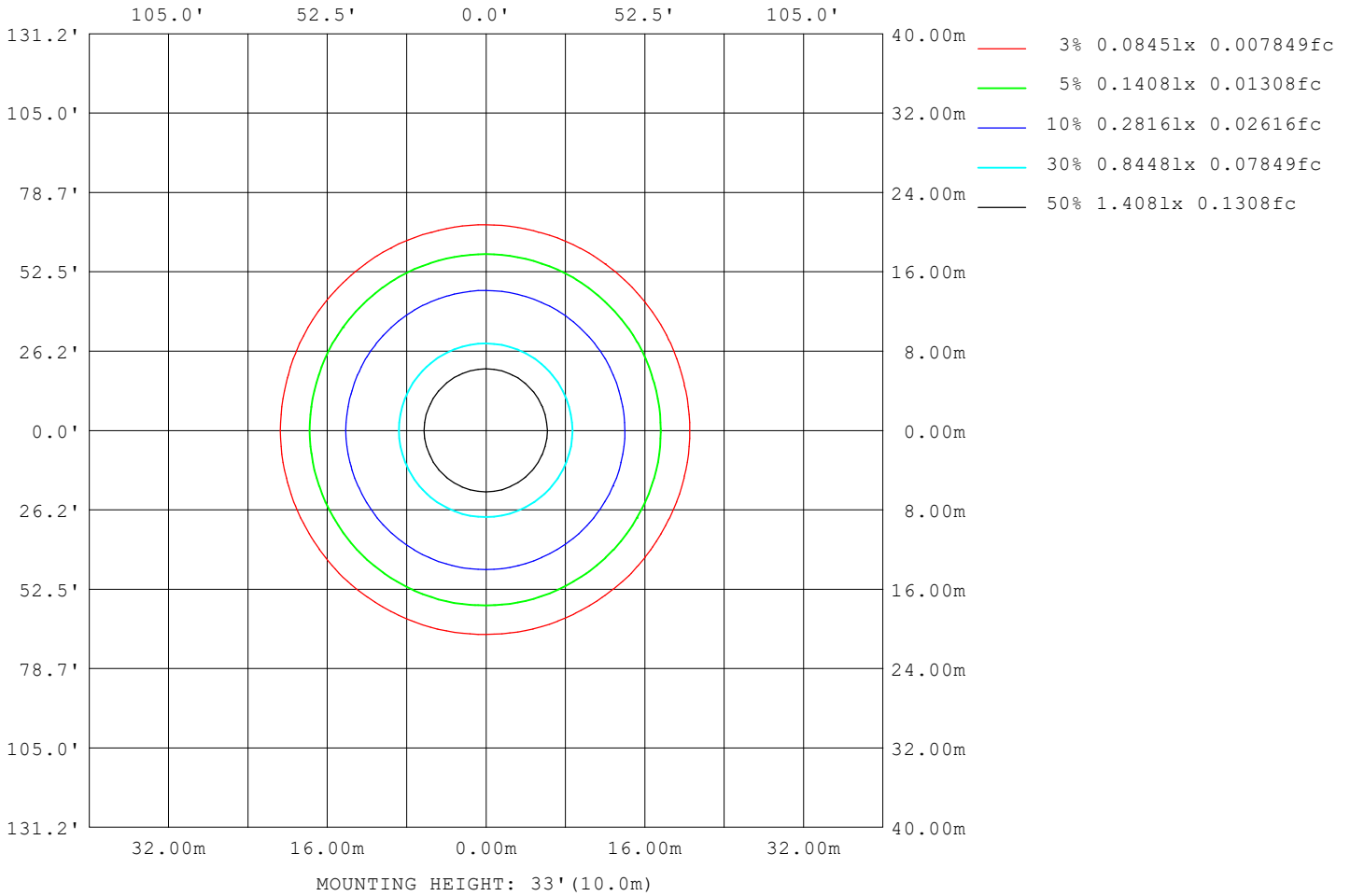
Note: The Curves indicate the illuminated area and the average illumination when the luminaire is at different distance.

C Range: 0 - 360DEG
 C Interval: 15.0DEG
 Test Speed: HIGH
 Temperature: 25.3°C
 Operators: DAMIN
 Test Date: 2024-01-24

γ Range: 0 - 90DEG
 γ Interval: 5.0DEG
 Test System: EVERFINE GO-2000B_V1 SYSTEM V2.00.473
 Humidity: 65.0%
 Test Distance: 9.401m [K=1.0000]
 Remarks:

ISOLUX DIAGRAM

Test:U:220.42V I:0.0675A P:8.4287W PF:0.5662 Freq:50.00Hz Lamp Flux:785.348x1 lm		
NAME:	TYPE:	WEIGHT:
SPEC.:	DIM.:	SERIAL No.:
MFR.: EVERFINE	SUR.:	Shielding Angle:



C Range: 0 - 360DEG
 C Interval: 15.0DEG
 Test Speed: HIGH
 Temperature:25.3°C
 Operators:DAMIN
 Test Date:2024-01-24

γ Range: 0 - 90DEG
 γ Interval: 5.0DEG
 Test System:EVERFINE GO-2000B_V1 SYSTEM V2.00.473
 Humidity:65.0%
 Test Distance:9.401m [K=1.0000]
 Remarks:

LED Avg.L Report

Test:U:220.42V I:0.0675A P:8.4287W PF:0.5662 Freq:50.00Hz Lamp Flux:785.348x1 lm		
NAME:	TYPE:	WEIGHT:
SPEC.:	DIM.:	SERIAL No.:
MFR.: EVERFINE	SUR.:	Shielding Angle:

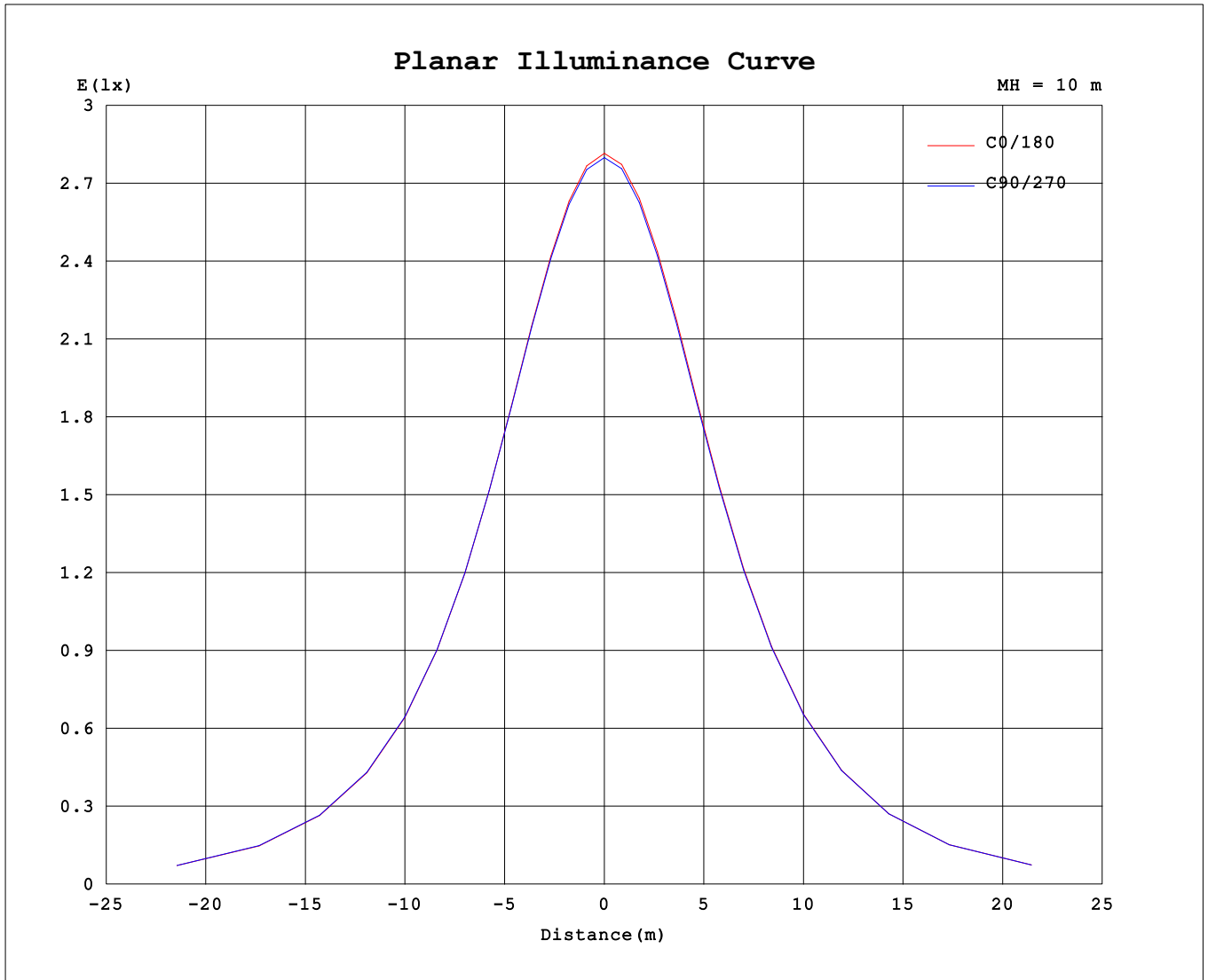
AvgL	cd/m2
L_0~180 (65) av	2301
L_0~180 (75) av	1979
L_0~180 (85) av	1244
L_90~270 (65) av	2322
L_90~270 (75) av	1934
L_90~270 (85) av	817
L_45 (65) av	2314
L_45 (75) av	1985
L_45 (85) av	1016

Standard: GB/T 29293-2012

C Range: 0 - 360DEG
 C Interval: 15.0DEG
 Test Speed: HIGH
 Temperature:25.3°C
 Operators:DAMIN
 Test Date:2024-01-24

γ Range: 0 - 90DEG
 γ Interval: 5.0DEG
 Test System:EVERFINE GO-2000B_V1 SYSTEM V2.00.473
 Humidity:65.0%
 Test Distance:9.401m [K=1.0000]
 Remarks:

Planar Illuminance Curve



C Range: 0 - 360DEG
 C Interval: 15.0DEG
 Test Speed: HIGH
 Temperature: 25.3°C
 Operators: DAMIN
 Test Date: 2024-01-24

γ Range: 0 - 90DEG
 γ Interval: 5.0DEG
 Test System: EVERFINE GO-2000B_V1 SYSTEM V2.00.473
 Humidity: 65.0%
 Test Distance: 9.401m [K=1.0000]
 Remarks:

LUMINOUS DISTRIBUTION INTENSITY DATA

Test:U:220.42V I:0.0675A P:8.4287W PF:0.5662 Freq:50.00Hz Lamp Flux:785.348x1 lm		
NAME:	TYPE:	WEIGHT:
SPEC.:	DIM.:	SERIAL No.:
MFR.: EVERFINE	SUR.:	Shielding Angle:

Table--1

UNIT: cd

C (DEG) \ γ (DEG)	0	15	30	45	60	75	90	105	120	135	150	165	180	195	210	225	240	255	270
0	280	280	280	280	280	280	280	280	280	280	280	280	280	280	280	280	280	280	280
5	278	279	279	279	279	279	279	279	279	279	279	279	279	279	279	279	279	279	279
10	274	274	274	274	274	275	275	275	275	275	275	275	275	275	275	275	275	275	275
15	267	267	267	267	267	268	268	268	268	269	269	269	269	269	269	269	269	269	269
20	258	258	258	258	258	259	259	259	259	260	260	260	260	260	260	260	260	260	260
25	246	246	246	247	247	247	247	248	248	249	248	249	249	249	249	249	249	249	249
30	232	233	232	233	233	234	234	235	235	235	235	236	236	235	236	236	236	236	236
35	217	217	217	217	217	218	218	219	219	220	220	220	220	220	221	220	221	220	221
40	200	200	199	200	200	201	201	202	202	203	203	203	203	203	204	203	204	203	204
45	181	181	181	181	181	182	183	183	184	184	184	185	185	184	185	185	185	185	185
50	161	161	161	161	161	162	163	163	163	164	164	165	165	165	165	165	165	165	165
55	140	140	140	140	140	141	141	142	142	143	143	144	144	143	144	144	145	144	144
60	118	118	118	118	118	119	119	120	120	121	121	122	122	121	122	122	123	122	122
65	95.5	95.8	95.0	95.8	95.5	96.6	96.4	97.6	97.5	98.3	98.0	98.8	99.0	98.7	99.5	99.3	100.0	99.6	99.9
70	72.8	73.0	72.3	72.8	72.0	72.5	72.2	73.5	73.8	75.2	75.0	75.8	76.0	75.8	76.6	76.4	76.9	76.4	76.6
75	49.7	49.9	49.3	49.4	48.2	48.4	48.0	49.2	49.7	51.5	52.1	53.0	52.7	52.6	53.5	53.1	53.1	52.1	52.1
80	28.1	27.9	26.5	26.6	25.9	25.7	25.3	26.3	26.9	28.7	29.7	30.4	30.5	30.3	30.2	29.9	29.9	28.9	28.9
85	10.1	8.97	7.54	7.44	6.76	6.24	5.61	6.34	7.12	8.93	9.94	10.4	11.5	10.3	9.38	9.46	9.67	8.71	8.62
90	0.48	0.47	0.49	0.48	0.47	0.47	0.47	0.47	0.46	0.46	0.48	0.48	0.56	0.59	0.60	0.54	0.54	0.57	0.55

C Range: 0 - 360DEG
 C Interval: 15.0DEG
 Test Speed: HIGH
 Temperature: 25.3°C
 Operators: DAMIN
 Test Date: 2024-01-24

γ Range: 0 - 90DEG
 γ Interval: 5.0DEG
 Test System: EVERFINE GO-2000B_V1 SYSTEM V2.00.473
 Humidity: 65.0%
 Test Distance: 9.401m [K=1.0000]
 Remarks:

