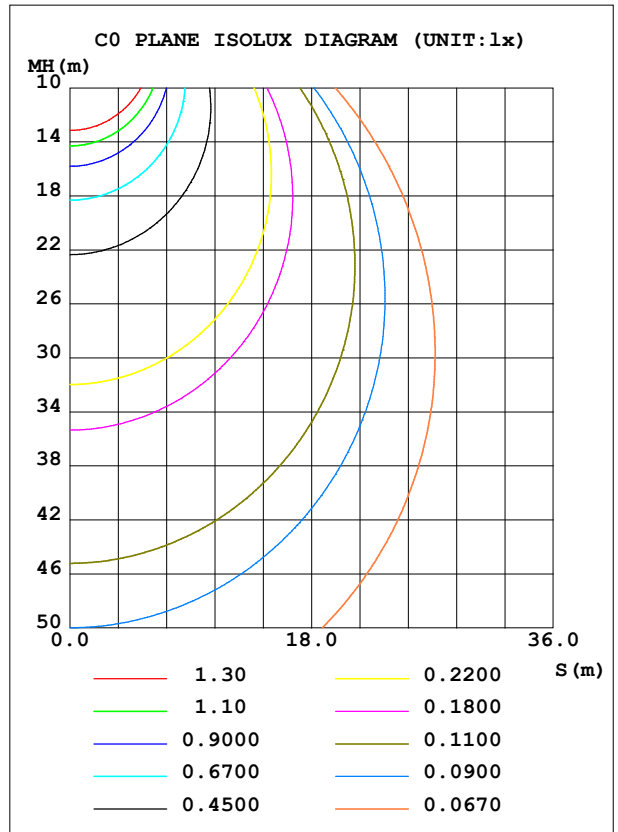
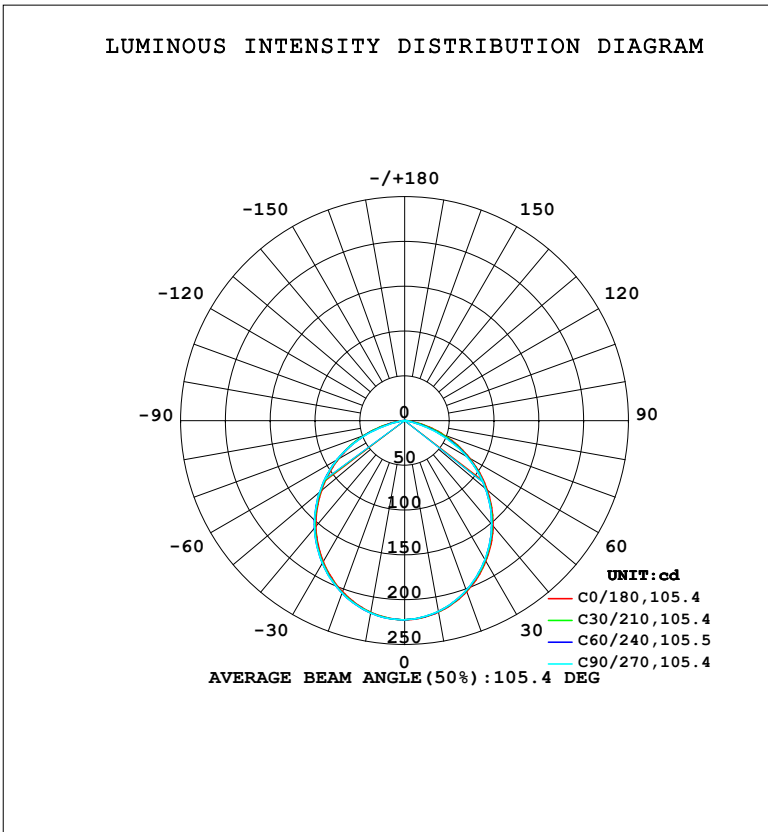


LUMINAIRE PHOTOMETRIC TEST REPORT

Test:U:220.31V I:0.0601A P:7.2997W PF:0.5512 Freq:50.00Hz Lamp Flux:565.688x1 lm		
NAME:	TYPE:	WEIGHT:
SPEC.:	DIM.:	SERIAL No.:
MFR.: EVERFINE	SUR.:	Shielding Angle:

DATA OF LAMP		PHOTOMETRIC DATA				Eff: 77.49 lm/W
MODEL	116E	I _{max} (cd)	222.4	S/MH (C0/180)	1.22	
NOMINAL POWER (W)	7	LOR (%)	100.0	S/MH (C90/270)	1.24	
RATED VOLTAGE (V)	220	TOTAL FLUX (lm)	565.69	η UP, DN (C0-180)	0.0,49.3	
NOMINAL FLUX (lm)	565.688	CIE CLASS	DIRECT	η UP, DN (C180-360)	0.0,50.7	
LAMPS INSIDE	1	η up (%)	0.0	CIBSE SHR NOM	1.25	
TEST VOLTAGE (V)	219.5	η down (%)	100.0	CIBSE SHR MAX	1.35	



C Range: 0 - 360DEG
C Interval: 15.0DEG
Test Speed: HIGH
Temperature: 25.3°C
Operators: DAMIN
Test Date: 2024-01-09

γ Range: 0 - 90DEG
γ Interval: 1.0DEG
Test System: EVERFINE GO-2000B_V1 SYSTEM V2.00.473
Humidity: 65.0%
Test Distance: 9.401m [K=1.0000]
Remarks:

ZONAL FLUX DIAGRAM

ZONAL FLUX DIAGRAM:

γ	C0	C45	C90	C135	C180	C225	C270	C315	γ	Φ zone	Φ total	%lum, lamp
10	217.1	216.6	216.2	216.9	217.3	217.8	218.1	217.7	0- 10	20.97	20.97	3.71,3.71
20	203.0	202.0	201.4	202.5	203.3	204.3	204.8	203.9	10- 20	59.56	80.53	14.2,14.2
30	181.4	180.0	179.4	180.7	181.8	183.3	183.8	182.6	20- 30	89.00	169.5	30,30
40	153.6	152.0	151.2	152.9	154.3	156.0	156.6	155.1	30- 40	105.4	274.9	48.6,48.6
50	120.5	118.7	117.8	119.8	121.2	123.1	123.8	122.0	40- 50	106.3	381.2	67.4,67.4
60	83.94	82.13	79.97	82.94	84.75	86.72	87.02	85.49	50- 60	91.86	473.1	83.6,83.6
70	46.33	42.55	37.43	42.84	47.22	46.67	44.70	46.78	60- 70	63.65	536.7	94.9,94.9
80	12.73	6.705	3.104	6.983	13.08	8.655	5.844	9.081	70- 80	26.69	563.4	99.6,99.6
90	0.1965	0.1982	0.1810	0.1937	0.2381	0.2282	0.2172	0.2361	80- 90	2.265	565.7	100,100
100									90-100			
110									100-110			
120									110-120			
130									120-130			
140									130-140			
150									140-150			
160									150-160			
170									160-170			
180									170-180			
DEG	LUMINOUS INTENSITY:cd									UNIT:lm		

Conical surface Flux(90deg): 328.94 lm

%lum = 58.1%

%lamp = 58.1%

Conical surface Flux(130deg): 509.2 lm

%lum = 90.0%

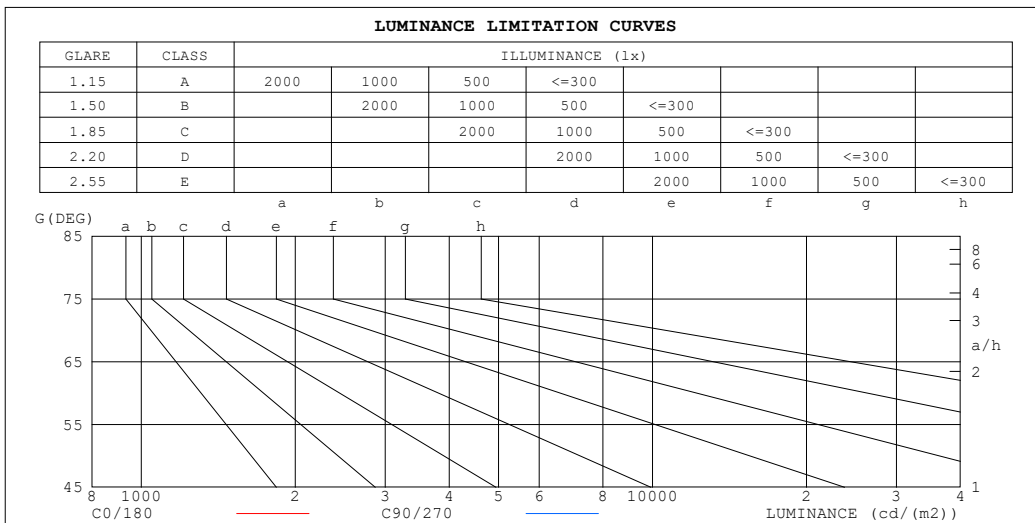
%lamp = 90.0%

C Range: 0 - 360DEG
 C Interval: 15.0DEG
 Test Speed: HIGH
 Temperature:25.3°C
 Operators:DAMIN
 Test Date:2024-01-09

γ Range: 0 - 90DEG
 γ Interval: 1.0DEG
 Test System:EVERFINE GO-2000B_V1 SYSTEM V2.00.473
 Humidity:65.0%
 Test Distance:9.401m [K=1.0000]
 Remarks:

LUMINANCE LIMITATION CURVES

Test:U:220.31V I:0.0601A P:7.2997W PF:0.5512 Freq:50.00Hz Lamp Flux:565.688x1 lm		
NAME:	TYPE:	WEIGHT:
SPEC.:	DIM.:	SERIAL No.:
MFR.: EVERFINE	SUR.:	Shielding Angle:



LUMINANCE cd/(m2)		
G (DEG)	C0/180	C90/270
85	72	15
80	245	59
75	369	222
70	453	361
65	515	458
60	561	528
55	597	574
50	627	605
45	650	630

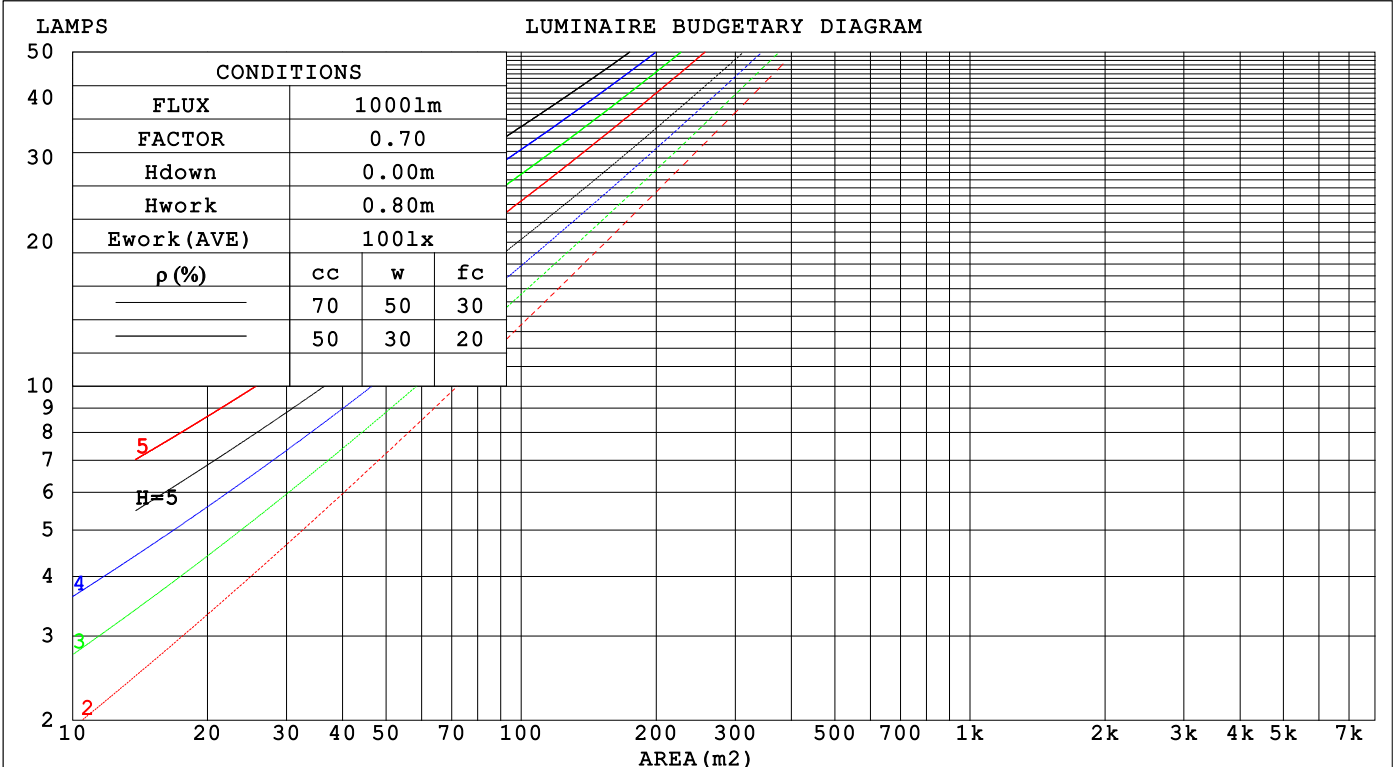
C Range: 0 - 360DEG
 C Interval: 15.0DEG
 Test Speed: HIGH
 Temperature:25.3°C
 Operators:DAMIN
 Test Date:2024-01-09

γ Range: 0 - 90DEG
 γ Interval: 1.0DEG
 Test System:EVERFINE GO-2000B_V1 SYSTEM V2.00.473
 Humidity:65.0%
 Test Distance:9.401m [K=1.0000]
 Remarks:

CU AND LUMINAIRE BUDGETARY ESTIMATE DIAGRAM

Test:U:220.31V I:0.0601A P:7.2997W PF:0.5512 Freq:50.00Hz Lamp Flux:565.688x1 lm		
NAME:	TYPE:	WEIGHT:
SPEC.:	DIM.:	SERIAL No.:
MFR.: EVERFINE	SUR.:	Shielding Angle:

ρ_{cc}	80%			70%			50%			30%			10%			0
ρ_w	50%	30%	10%	50%	30%	10%	50%	30%	10%	50%	30%	10%	50%	30%	10%	0
ρ_{fc}	20%			20%			20%			20%			20%			0
RCR	RCR:Room Cavity Ratio Coefficients of Utilization(CU)															
0.0	1.19	1.19	1.19	1.16	1.16	1.16	1.11	1.11	1.11	1.06	1.06	1.06	1.02	1.02	1.02	1.00
1.0	1.05	1.02	.98	1.03	.00	.97	.99	.96	.93	.95	.93	.91	.92	.90	.88	.86
2.0	.93	.86	.81	.91	.85	.80	.87	.82	.78	.84	.80	.76	.81	.78	.75	.73
3.0	.82	.74	.68	.80	.73	.67	.77	.71	.66	.75	.69	.65	.72	.68	.64	.62
4.0	.73	.64	.58	.71	.64	.57	.69	.62	.57	.67	.61	.56	.64	.59	.55	.53
5.0	.65	.56	.50	.64	.56	.50	.62	.55	.49	.60	.54	.49	.58	.53	.48	.46
6.0	.59	.50	.44	.58	.50	.44	.56	.49	.43	.54	.48	.43	.53	.47	.42	.40
7.0	.53	.45	.39	.53	.44	.39	.51	.44	.38	.50	.43	.38	.48	.42	.38	.36
8.0	.49	.40	.35	.48	.40	.35	.47	.39	.34	.45	.39	.34	.44	.38	.34	.32
9.0	.45	.37	.31	.44	.36	.31	.43	.36	.31	.42	.35	.31	.41	.35	.31	.29
10.0	.41	.34	.28	.41	.33	.28	.40	.33	.28	.39	.33	.28	.38	.32	.28	.26



C Range: 0 - 360DEG
 C Interval: 15.0DEG
 Test Speed: HIGH
 Temperature:25.3°C
 Operators:DAMIN
 Test Date:2024-01-09

γ Range: 0 - 90DEG
 γ Interval: 1.0DEG
 Test System:EVERFINE GO-2000B_V1 SYSTEM V2.00.473
 Humidity:65.0%
 Test Distance:9.401m [K=1.0000]
 Remarks:

WEC AND CCEC

Test:U:220.31V I:0.0601A P:7.2997W PF:0.5512 Freq:50.00Hz								
Lamp Flux:565.688x1 lm								
NAME:			TYPE:			WEIGHT:		
SPEC.:			DIM.:			SERIAL No.:		
MFR.: EVERFINE			SUR.:			Shielding Angle:		

ρ _{CC}	80%			70%			50%			30%			10%			0
ρ _w	50%	30%	10%	50%	30%	10%	50%	30%	10%	50%	30%	10%	50%	30%	10%	0
ρ _{fc}	20%			20%			20%			20%			20%			0
RCR	RCR:Room Cavity Ratio						Wall Exitance Coefficients (WEC)									
0.0																
1.0	.279	.159	.050	.272	.155	.049	.259	.149	.047	.247	.142	.046	.236	.137	.044	
2.0	.270	.148	.045	.264	.146	.045	.253	.141	.044	.242	.136	.043	.232	.131	.041	
3.0	.254	.135	.041	.249	.133	.040	.239	.129	.039	.229	.126	.039	.221	.122	.038	
4.0	.237	.123	.036	.233	.122	.036	.224	.119	.035	.215	.116	.035	.207	.113	.034	
5.0	.221	.113	.033	.217	.111	.032	.209	.109	.032	.202	.106	.032	.195	.104	.031	
6.0	.206	.103	.030	.203	.102	.029	.195	.100	.029	.189	.098	.029	.183	.096	.029	
7.0	.193	.095	.027	.190	.094	.027	.183	.093	.027	.177	.091	.026	.172	.089	.026	
8.0	.181	.088	.025	.178	.088	.025	.172	.086	.025	.167	.084	.024	.162	.083	.024	
9.0	.170	.082	.023	.167	.082	.023	.162	.080	.023	.157	.079	.023	.153	.078	.022	
10.0	.160	.077	.021	.158	.076	.021	.153	.075	.021	.149	.074	.021	.145	.073	.021	

ρ _{CC}	80%			70%			50%			30%			10%			0
ρ _w	50%	30%	10%	50%	30%	10%	50%	30%	10%	50%	30%	10%	50%	30%	10%	0
ρ _{fc}	20%			20%			20%			20%			20%			0
RCR	RCR:Room Cavity Ratio						Ceiling Cavity Exitance Coefficients (CCEC)									
0.0	.190	.190	.190	.163	.163	.163	.111	.111	.111	.064	.064	.064	.020	.020	.020	
1.0	.178	.156	.137	.152	.134	.118	.104	.092	.081	.060	.053	.047	.019	.017	.015	
2.0	.169	.132	.101	.145	.114	.087	.099	.079	.061	.057	.046	.036	.018	.015	.012	
3.0	.161	.114	.076	.138	.099	.066	.095	.068	.047	.055	.040	.027	.018	.013	.009	
4.0	.154	.101	.060	.132	.087	.052	.091	.061	.037	.053	.036	.022	.017	.012	.007	
5.0	.147	.090	.049	.126	.078	.042	.087	.055	.030	.050	.032	.018	.016	.010	.006	
6.0	.140	.082	.040	.120	.071	.035	.083	.050	.025	.048	.029	.015	.016	.010	.005	
7.0	.133	.075	.034	.115	.065	.030	.079	.046	.021	.046	.027	.013	.015	.009	.004	
8.0	.127	.069	.029	.109	.060	.026	.076	.042	.018	.044	.025	.011	.014	.008	.004	
9.0	.121	.064	.026	.104	.056	.022	.072	.039	.016	.042	.023	.009	.014	.008	.003	
10.0	.116	.060	.023	.100	.052	.020	.069	.037	.014	.040	.022	.008	.013	.007	.003	

C Range: 0 - 360DEG
 C Interval: 15.0DEG
 Test Speed: HIGH
 Temperature:25.3°C
 Operators:DAMIN
 Test Date:2024-01-09

γ Range: 0 - 90DEG
 γ Interval: 1.0DEG
 Test System:EVERFINE GO-2000B_V1 SYSTEM V2.00.473
 Humidity:65.0%
 Test Distance:9.401m [K=1.0000]
 Remarks:

UGR(Unified Glare Rating) Table

Test:U:220.31V I:0.0601A P:7.2997W PF:0.5512 Freq:50.00Hz										
Lamp Flux:565.688x1 lm										
NAME:			TYPE:				WEIGHT:			
SPEC.:			DIM.:				SERIAL No.:			
MFR.: EVERFINE			SUR.:				Shielding Angle:			
ceiling/cavity	0.7	0.7	0.5	0.5	0.3	0.7	0.7	0.5	0.5	0.3
walls	0.5	0.3	0.5	0.3	0.3	0.5	0.3	0.5	0.3	0.3
working plane	0.2	0.2	0.2	0.2	0.2	0.2	0.2	0.2	0.2	0.2
Room dimensions	Viewed crosswise					Viewed endwise				
x = 2H y = 2H	13.0	14.5	13.3	14.6	14.9	12.8	14.2	13.0	14.4	14.6
3H	14.2	15.6	14.5	15.8	16.0	13.7	15.1	14.0	15.3	15.5
4H	14.6	15.9	14.9	16.1	16.4	13.9	15.2	14.2	15.4	15.7
6H	14.8	16.0	15.1	16.2	16.5	13.9	15.1	14.2	15.3	15.6
8H	14.8	15.9	15.1	16.2	16.5	13.8	15.0	14.1	15.2	15.5
12H	14.7	15.8	15.1	16.1	16.4	13.8	14.9	14.1	15.2	15.5
4H 2H	13.5	14.7	13.8	15.0	15.2	13.3	14.6	13.6	14.8	15.1
3H	14.8	15.9	15.2	16.2	16.5	14.4	15.5	14.7	15.8	16.1
4H	15.3	16.3	15.7	16.6	17.0	14.6	15.6	15.0	15.9	16.3
6H	15.5	16.4	15.9	16.8	17.1	14.6	15.5	15.0	15.8	16.2
8H	15.5	16.4	16.0	16.7	17.1	14.5	15.4	15.0	15.7	16.1
12H	15.5	16.3	15.9	16.7	17.1	14.5	15.3	14.9	15.6	16.0
8H 4H	15.4	16.2	15.8	16.5	16.9	14.7	15.5	15.1	15.9	16.3
6H	15.6	16.3	16.1	16.7	17.1	14.7	15.4	15.1	15.8	16.2
8H	15.7	16.3	16.1	16.7	17.1	14.7	15.3	15.1	15.7	16.1
12H	15.6	16.2	16.1	16.6	17.1	14.6	15.1	15.1	15.6	16.1
12H 4H	15.3	16.1	15.7	16.5	16.9	14.7	15.4	15.1	15.8	16.2
6H	15.6	16.2	16.1	16.6	17.1	14.7	15.3	15.1	15.7	16.2
8H	15.6	16.1	16.1	16.6	17.1	14.6	15.2	15.1	15.6	16.1
Variations with the observer position at spacings(CIE Pub.117):										
S = 1.0H	+ 0.2 / - 0.3					+ 0.3 / - 0.4				
1.5H	+ 0.2 / - 0.4					+ 0.3 / - 0.5				
2.0H	+ 0.4 / - 0.4					+ 0.5 / - 0.5				

CIE Pub.117, 565.7 lm Total Lamp Luminous Flux Correct (8log(F/F0) = -2.0)
 Area: 0.3025 m2

C Range: 0 - 360DEG
 C Interval: 15.0DEG
 Test Speed: HIGH
 Temperature:25.3°C
 Operators:DAMIN
 Test Date:2024-01-09

γ Range: 0 - 90DEG
 γ Interval: 1.0DEG
 Test System:EVERFINE GO-2000B_V1 SYSTEM V2.00.473
 Humidity:65.0%
 Test Distance:9.401m [K=1.0000]
 Remarks:

UTILIZATION FACTORS TABLE

Test:U:220.31V I:0.0601A P:7.2997W PF:0.5512 Freq:50.00Hz Lamp Flux:565.688x1 lm		
NAME:	TYPE:	WEIGHT:
SPEC.:	DIM.:	SERIAL No.:
MFR.: EVERFINE	SUR.:	Shielding Angle:

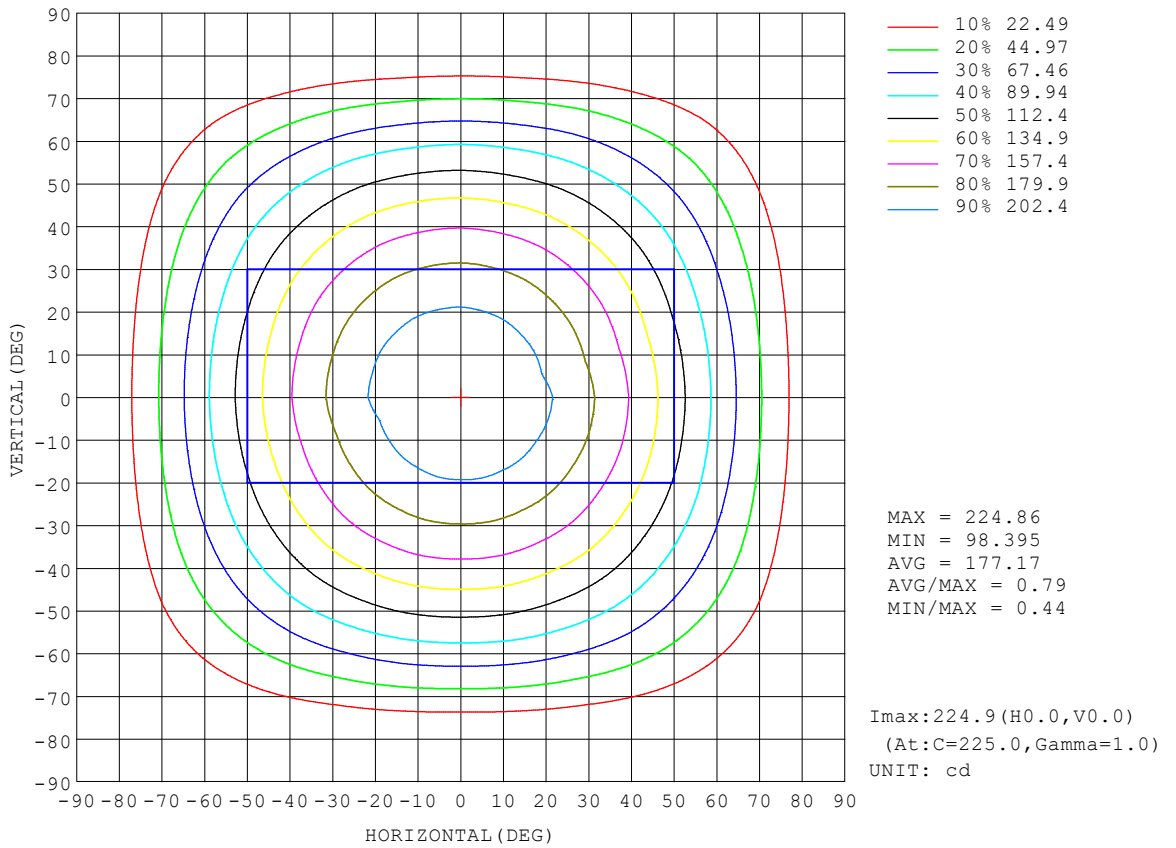
REFLECTANCE										
Ceiling	0.8	0.8	0.8	0.7	0.7	0.7	0.5	0.5	0.5	0
Walls	0.7	0.5	0.3	0.7	0.5	0.3	0.7	0.5	0.3	0
Working plane	0.2	0.2	0.2	0.2	0.2	0.2	0.2	0.2	0.2	0
ROOM INDEX	UTILIZATION FACTORS (PERCENT) $k(RI) \times RCR = 5$									
k = 0.60	60	48	42	59	48	41	58	48	41	35
0.80	70	59	52	69	58	51	67	58	51	44
1.00	78	68	61	77	67	61	75	69	60	53
1.25	85	76	69	84	75	69	81	74	68	61
1.50	90	81	75	89	80	74	86	79	73	66
2.00	97	89	83	95	88	82	92	86	81	73
2.50	101	94	88	99	92	87	95	90	85	77
3.00	104	98	93	102	96	92	98	93	89	81
4.00	108	102	98	105	101	97	101	97	94	86
5.00	110	106	102	107	104	100	103	100	97	88
ROOM INDEX	UF(total)									Direct
According to DIN EN 13032-2 2004			Suspended				SHRNOM = 1.25			

C Range: 0 - 360DEG
 C Interval: 15.0DEG
 Test Speed: HIGH
 Temperature:25.3°C
 Operators:DAMIN
 Test Date:2024-01-09

γ Range: 0 - 90DEG
 γ Interval: 1.0DEG
 Test System:EVERFINE GO-2000B_V1 SYSTEM V2.00.473
 Humidity:65.0%
 Test Distance:9.401m [K=1.0000]
 Remarks:

ISOCANDELA DIAGRAM

Test:U:220.31V I:0.0601A P:7.2997W PF:0.5512 Freq:50.00Hz Lamp Flux:565.688x1 lm		
NAME:	TYPE:	WEIGHT:
SPEC.:	DIM.:	SERIAL No.:
MFR.: EVERFINE	SUR.:	Shielding Angle:

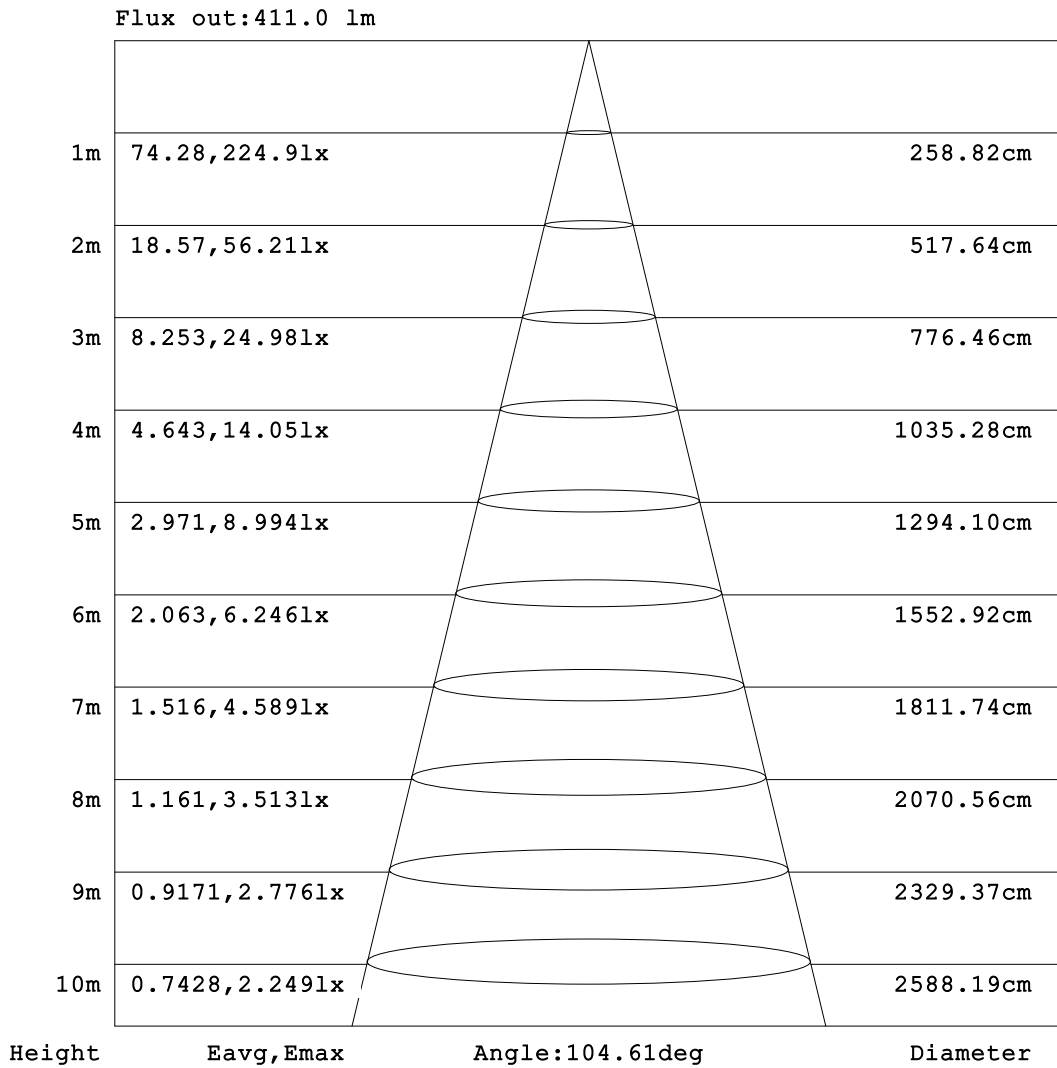


C Range: 0 - 360DEG
 C Interval: 15.0DEG
 Test Speed: HIGH
 Temperature:25.3°C
 Operators:DAMIN
 Test Date:2024-01-09

γ Range: 0 - 90DEG
 γ Interval: 1.0DEG
 Test System:EVERFINE GO-2000B_V1 SYSTEM V2.00.473
 Humidity:65.0%
 Test Distance:9.401m [K=1.0000]
 Remarks:

AAI Figure

Test:U:220.31V I:0.0601A P:7.2997W PF:0.5512 Freq:50.00Hz Lamp Flux:565.688x1 lm		
NAME:	TYPE:	WEIGHT:
SPEC.:	DIM.:	SERIAL No.:
MFR.: EVERFINE	SUR.:	Shielding Angle:



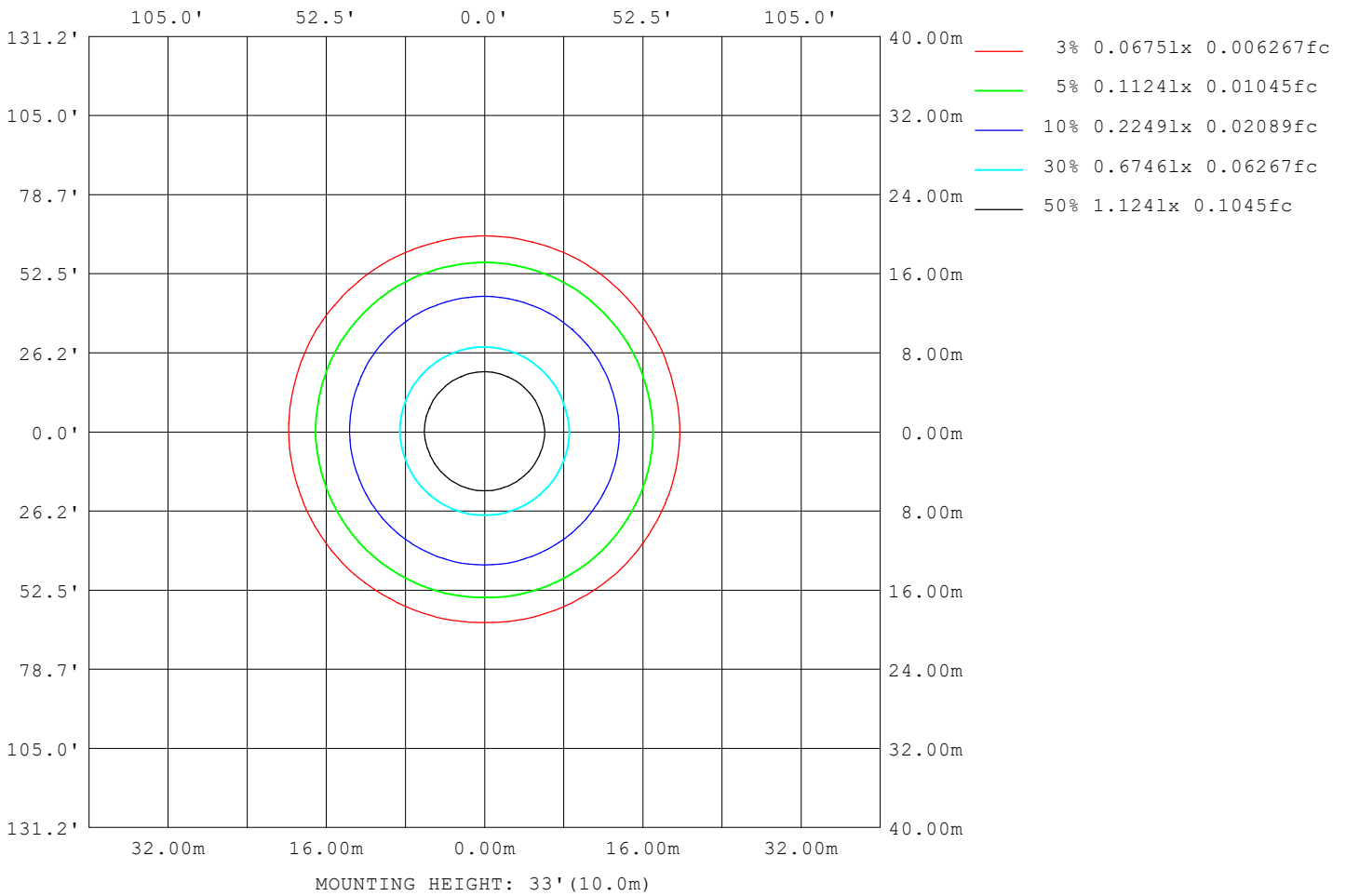
Note: The Curves indicate the illuminated area and the average illumination when the luminaire is at different distance.

C Range: 0 - 360DEG
C Interval: 15.0DEG
Test Speed: HIGH
Temperature: 25.3°C
Operators: DAMIN
Test Date: 2024-01-09

γ Range: 0 - 90DEG
γ Interval: 1.0DEG
Test System: EVERFINE GO-2000B_V1 SYSTEM V2.00.473
Humidity: 65.0%
Test Distance: 9.401m [K=1.0000]
Remarks:

ISOLUX DIAGRAM

Test:U:220.31V I:0.0601A P:7.2997W PF:0.5512 Freq:50.00Hz Lamp Flux:565.688x1 lm		
NAME:	TYPE:	WEIGHT:
SPEC.:	DIM.:	SERIAL No.:
MFR.: EVERFINE	SUR.:	Shielding Angle:



C Range: 0 - 360DEG
 C Interval: 15.0DEG
 Test Speed: HIGH
 Temperature:25.3°C
 Operators:DAMIN
 Test Date:2024-01-09

γ Range: 0 - 90DEG
 γ Interval: 1.0DEG
 Test System:EVERFINE GO-2000B_V1 SYSTEM V2.00.473
 Humidity:65.0%
 Test Distance:9.401m [K=1.0000]
 Remarks:

LED Avg.L Report

Test:U:220.31V I:0.0601A P:7.2997W PF:0.5512 Freq:50.00Hz Lamp Flux:565.688x1 lm		
NAME:	TYPE:	WEIGHT:
SPEC.:	DIM.:	SERIAL No.:
MFR.: EVERFINE	SUR.:	Shielding Angle:

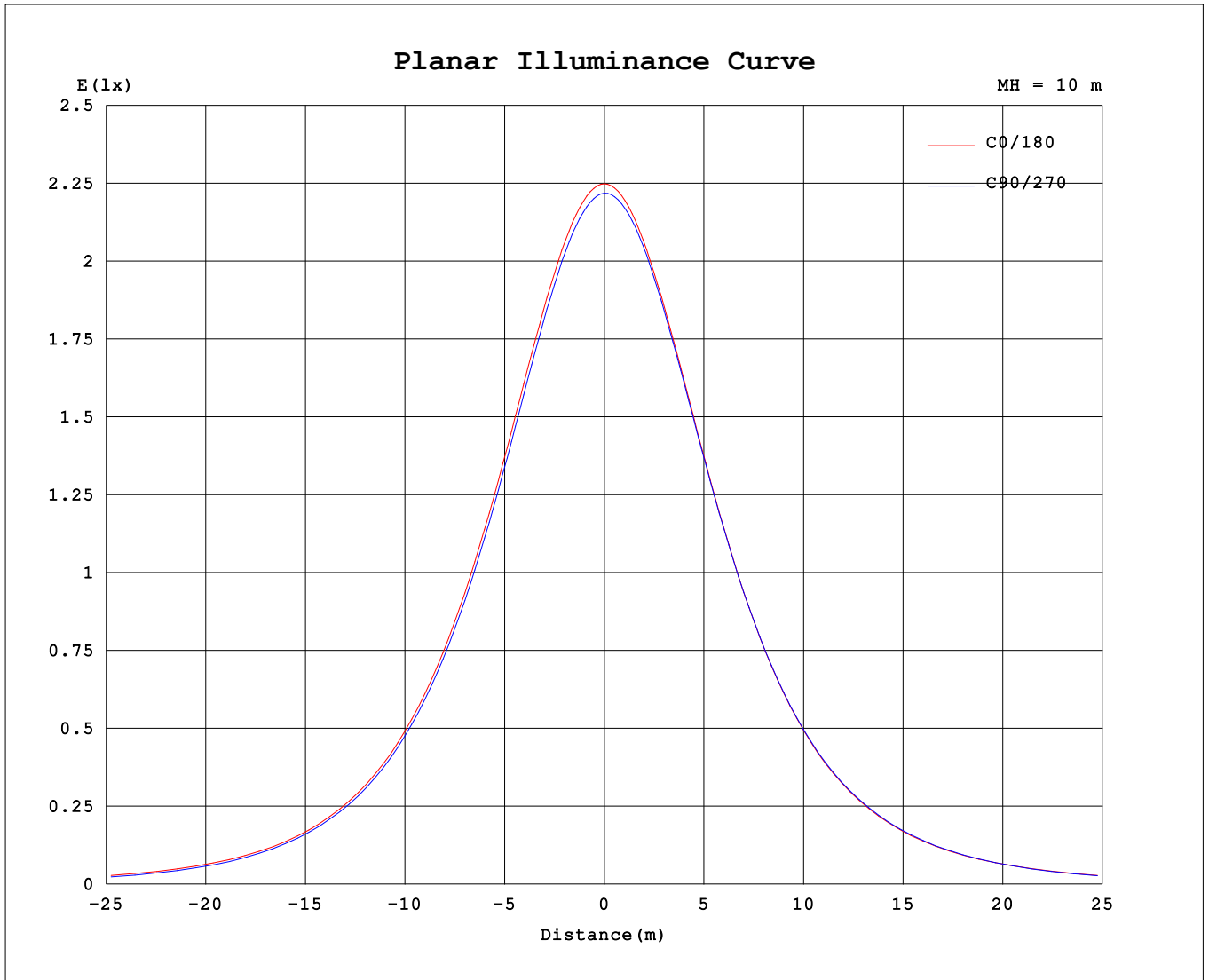
AvgL	cd/m2
L_0~180 (65) av	512
L_0~180 (75) av	369
L_0~180 (85) av	72
L_90~270 (65) av	489
L_90~270 (75) av	261
L_90~270 (85) av	19
L_45 (65) av	507
L_45 (75) av	318
L_45 (85) av	30

Standard: GB/T 29293-2012

C Range: 0 - 360DEG
 C Interval: 15.0DEG
 Test Speed: HIGH
 Temperature:25.3°C
 Operators:DAMIN
 Test Date:2024-01-09

γ Range: 0 - 90DEG
 γ Interval: 1.0DEG
 Test System:EVERFINE GO-2000B_V1 SYSTEM V2.00.473
 Humidity:65.0%
 Test Distance:9.401m [K=1.0000]
 Remarks:

Planar Illuminance Curve



C Range: 0 - 360DEG
 C Interval: 15.0DEG
 Test Speed: HIGH
 Temperature: 25.3°C
 Operators: DAMIN
 Test Date: 2024-01-09

γ Range: 0 - 90DEG
 γ Interval: 1.0DEG
 Test System: EVERFINE GO-2000B_V1 SYSTEM V2.00.473
 Humidity: 65.0%
 Test Distance: 9.401m [K=1.0000]
 Remarks:

LUMINOUS DISTRIBUTION INTENSITY DATA

Test:U:220.31V I:0.0601A P:7.2997W PF:0.5512 Freq:50.00Hz Lamp Flux:565.688x1 lm		
NAME:	TYPE:	WEIGHT:
SPEC.:	DIM.:	SERIAL No.:
MFR.: EVERFINE	SUR.:	Shielding Angle:

Table--2

UNIT: cd

C (DEG) \ γ (DEG)	285	300	315	330	345														
0	222	222	222	222	222														
5	221	221	221	221	221														
10	218	218	218	218	217														
15	212	212	212	212	211														
20	204	204	204	204	203														
25	195	195	194	194	193														
30	183	183	183	182	182														
35	170	170	170	169	169														
40	156	156	155	155	154														
45	140	140	139	139	138														
50	123	123	122	122	121														
55	105	105	104	104	103														
60	86.6	86.5	85.5	85.2	84.1														
65	66.2	67.1	66.6	66.3	65.2														
70	44.8	46.2	46.8	47.5	46.5														
75	23.7	25.6	26.8	28.6	28.7														
80	6.16	7.60	9.08	11.3	12.4														
85	0.66	0.73	0.96	1.24	1.62														
90	0.23	0.22	0.24	0.23	0.24														

C Range: 0 - 360DEG
 C Interval: 15.0DEG
 Test Speed: HIGH
 Temperature:25.3°C
 Operators:DAMIN
 Test Date:2024-01-09

γ Range: 0 - 90DEG
 γ Interval: 1.0DEG
 Test System:EVERFINE GO-2000B_V1 SYSTEM V2.00.473
 Humidity:65.0%
 Test Distance:9.401m [K=1.0000]
 Remarks: