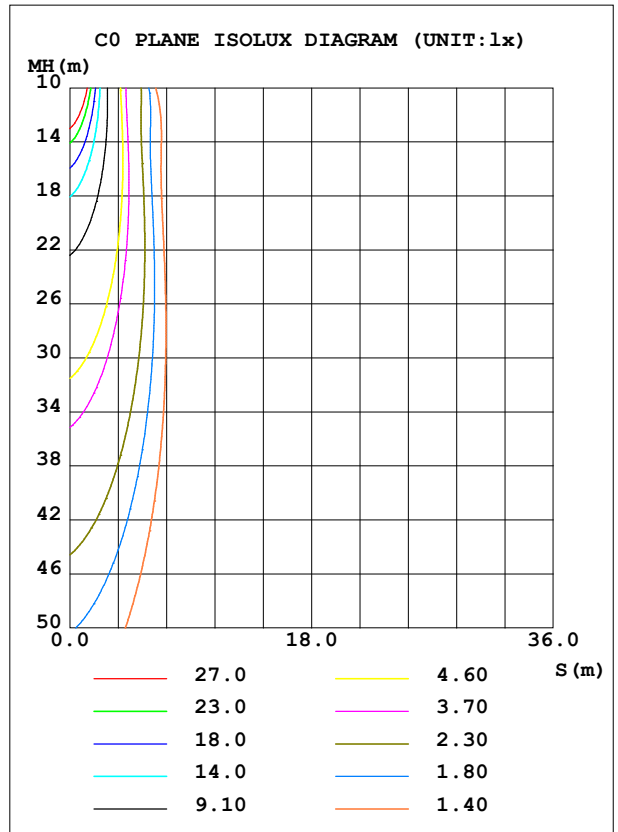
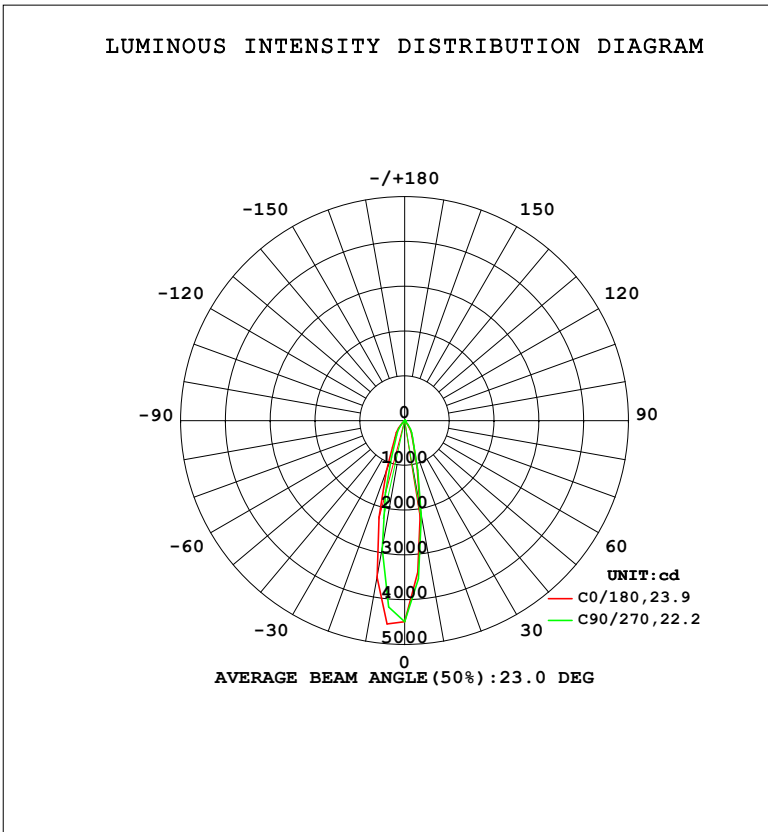


LUMINAIRE PHOTOMETRIC TEST REPORT

Test:U:220.33V I:0.1011A P:12.217W PF:0.5483 Freq:50.00Hz Lamp Flux:1265.56x1 lm		
NAME: 射灯	TYPE:	WEIGHT:
SPEC.:	DIM.:	SERIAL No.:
MFR.: EVERFINE	SUR.: 47mm	Shielding Angle:

DATA OF LAMP		PHOTOMETRIC DATA				Eff: 103.59 lm/W
MODEL	314B	I _{max} (cd)	4619	S/MH (C0/180)	0.49	
NOMINAL POWER (W)	12	LOR (%)	100.0	S/MH (C90/270)	0.43	
RATED VOLTAGE (V)	220	TOTAL FLUX (lm)	1265.6	η UP, DN (C0-180)	0.5, 44.7	
NOMINAL FLUX (lm)	1265.56	CIE CLASS	DIRECT	η UP, DN (C180-360)	0.6, 54.2	
LAMPS INSIDE	1	η up (%)	1.1	CIBSE SHR NOM	0.00	
TEST VOLTAGE (V)	219.5	η down (%)	98.9	CIBSE SHR MAX	0.30	



C Range: 0 - 360DEG
 C Interval: 22.5DEG
 Test Speed: HIGH
 Temperature: 25.3°C
 Operators: DAMIN
 Test Date: 2023-11-10

γ Range: 0 - 180DEG
 γ Interval: 5.0DEG
 Test System: EVERFINE GO-2000B_V1 SYSTEM V2.00.473
 Humidity: 65.0%
 Test Distance: 9.401m [K=1.0000]
 Remarks:

ZONAL FLUX DIAGRAM

ZONAL FLUX DIAGRAM:

γ	C0	C45	C90	C135	C180	C225	C270	C315	γ	Φ zone	Φ total	%lum,lamp
10	2053	2003	2166	2822	3560	3576	2909	2310	0- 10	336.6	336.6	26.6,26.6
20	590.0	594.6	620.9	872.7	1201	1153	869.6	639.8	10- 20	443.5	780.1	61.6,61.6
30	286.4	285.0	320.9	380.3	438.5	424.2	371.4	294.6	20- 30	244.5	1025	81,81
40	64.36	75.62	112.9	184.2	217.6	196.8	139.6	86.13	30- 40	152.1	1177	93,93
50	16.87	19.65	21.31	26.16	27.55	29.59	21.09	19.12	40- 50	49.52	1226	96.9,96.9
60	7.714	9.680	12.50	13.53	12.66	13.55	11.39	9.956	50- 60	14.76	1241	98.1,98.1
70	2.800	3.237	4.051	5.345	4.436	5.122	3.851	3.274	60- 70	7.570	1249	98.7,98.7
80	0.7292	0.9499	1.509	1.860	1.671	1.642	1.468	1.046	70- 80	2.706	1251	98.9,98.9
90	0.0178	0.0121	0.0132	0.2206	0.1886	0.1435	0.0363	0.0305	80- 90	0.6915	1252	98.9,98.9
100	0.0354	0.0239	0.0121	0.0122	0.0651	0.0721	0.0909	0.1342	90-100	0.0563	1252	98.9,98.9
110	0.3130	0.2876	0.2115	0.1216	0.2487	0.2523	0.3211	0.4268	100-110	0.1582	1252	98.9,98.9
120	0.9038	0.8510	0.6710	0.4989	0.6808	0.6967	0.7996	1.030	110-120	0.4933	1253	99,99
130	2.363	2.301	1.868	1.442	1.747	1.724	1.957	2.518	120-130	1.168	1254	99.1,99.1
140	4.899	4.922	4.329	3.608	4.119	4.023	4.482	5.272	130-140	2.424	1256	99.3,99.3
150	6.870	6.868	6.630	6.101	6.655	6.590	6.949	7.322	140-150	3.541	1260	99.5,99.5
160	7.091	7.116	7.256	7.071	7.374	7.349	7.479	7.344	150-160	3.286	1263	99.8,99.8
170	5.702	5.785	6.174	6.293	6.373	6.328	6.309	5.943	160-170	1.930	1265	100,100
180	5.322	5.454	5.422	5.542	5.393	5.472	5.422	5.494	170-180	0.5492	1266	100,100
DEG	LUMINOUS INTENSITY:cd									UNIT:lm		

Conical surface Flux(90deg): 1211.2 lm

%lum = 95.7%

%lamp = 95.7%

Conical surface Flux(130deg): 1245.6 lm

%lum = 98.4%

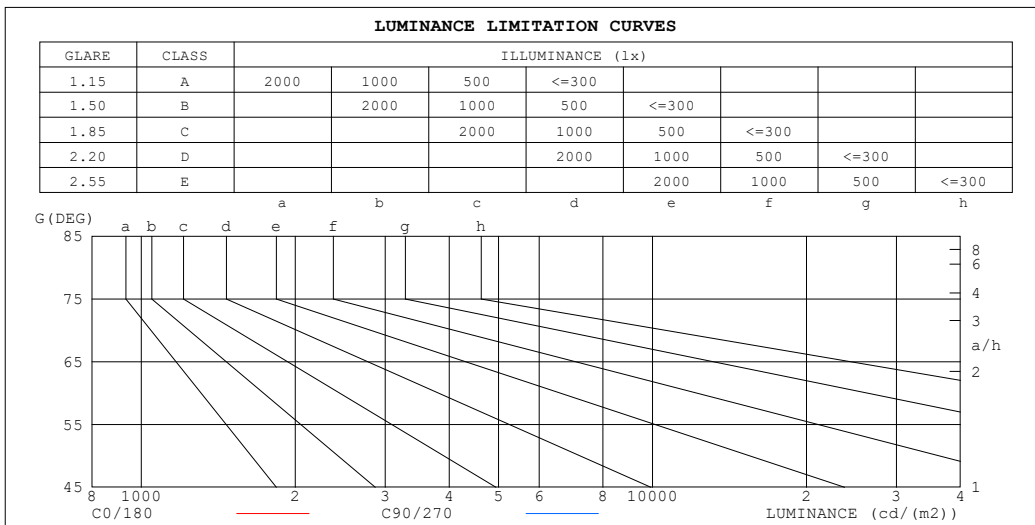
%lamp = 98.4%

C Range: 0 - 360DEG
 C Interval: 22.5DEG
 Test Speed: HIGH
 Temperature:25.3°C
 Operators:DAMIN
 Test Date:2023-11-10

γ Range: 0 - 180DEG
 γ Interval: 5.0DEG
 Test System:EVERFINE GO-2000B_V1 SYSTEM V2.00.473
 Humidity:65.0%
 Test Distance:9.401m [K=1.0000]
 Remarks:

LUMINANCE LIMITATION CURVES

Test:U:220.33V I:0.1011A P:12.217W PF:0.5483 Freq:50.00Hz Lamp Flux:1265.56x1 lm		
NAME: 射灯	TYPE:	WEIGHT:
SPEC.:	DIM.:	SERIAL No.:
MFR.: EVERFINE	SUR.: 47mm	Shielding Angle:



LUMINANCE cd/(m2)		
G (DEG)	C0/180	C90/270
85	27	94
80	58	117
75	88	136
70	113	159
65	144	299
60	212	336
55	288	374
50	361	446
45	504	763

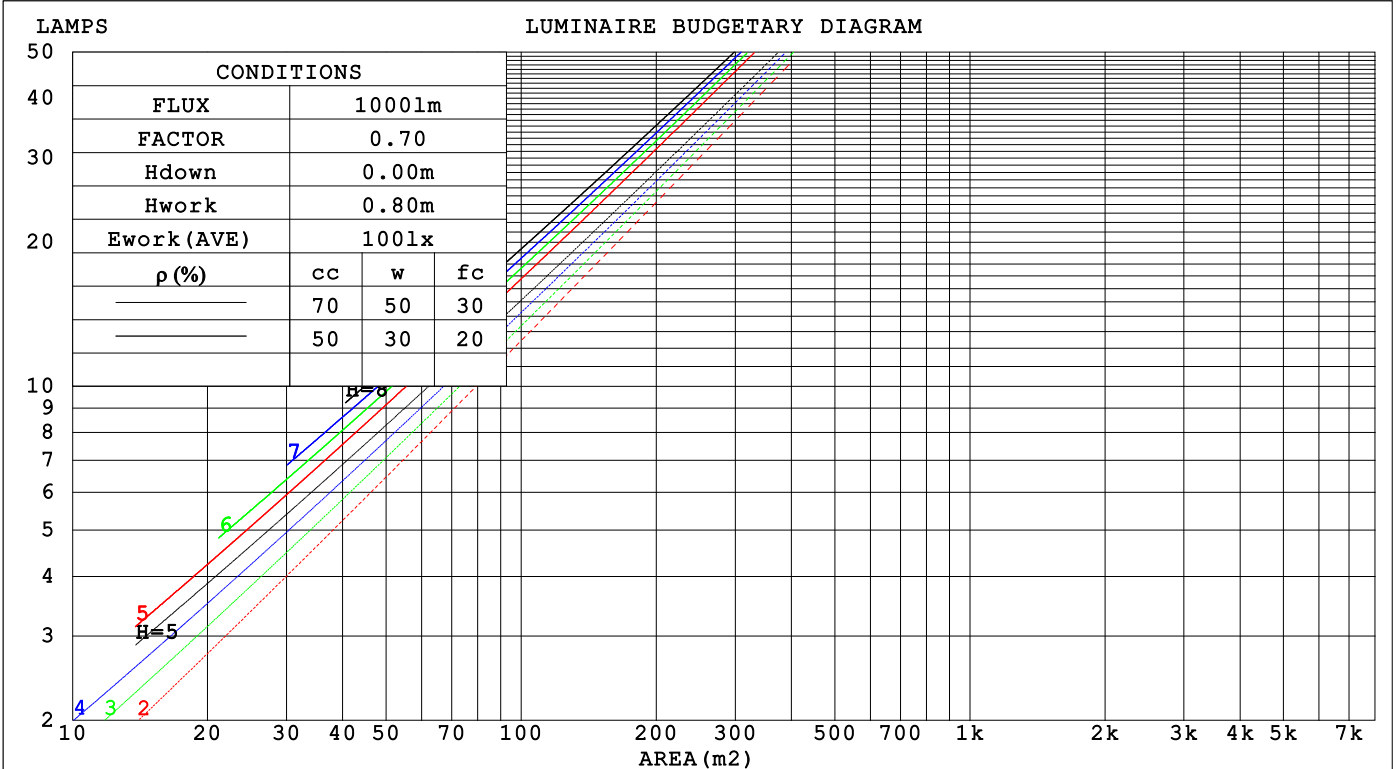
C Range: 0 - 360DEG
 C Interval: 22.5DEG
 Test Speed: HIGH
 Temperature:25.3°C
 Operators:DAMIN
 Test Date:2023-11-10

γ Range: 0 - 180DEG
 γ Interval: 5.0DEG
 Test System:EVERFINE GO-2000B_V1 SYSTEM V2.00.473
 Humidity:65.0%
 Test Distance:9.401m [K=1.0000]
 Remarks:

CU AND LUMINAIRE BUDGETARY ESTIMATE DIAGRAM

Test:U:220.33V I:0.1011A P:12.217W PF:0.5483 Freq:50.00Hz Lamp Flux:1265.56x1 lm		
NAME: 射灯	TYPE:	WEIGHT:
SPEC.:	DIM.:	SERIAL No.:
MFR.: EVERFINE	SUR.: 47mm	Shielding Angle:

pcc	80%			70%			50%			30%			10%			0
pw	50%	30%	10%	50%	30%	10%	50%	30%	10%	50%	30%	10%	50%	30%	10%	0
pfc	20%			20%			20%			20%			20%			0
RCR	RCR:Room Cavity Ratio						Coefficients of Utilization(CU)									
0.0	1.19	1.19	1.19	1.16	1.16	1.16	1.11	1.11	1.11	1.06	1.06	1.06	1.01	1.01	1.01	.99
1.0	1.12	1.09	1.07	1.09	1.07	1.06	1.05	1.04	1.02	1.01	.00	.99	.98	.97	.96	.94
2.0	1.05	1.02	.99	1.03	1.00	.97	.00	.97	.95	.97	.95	.93	.94	.92	.91	.89
3.0	.99	.95	.92	.98	.94	.91	.95	.92	.89	.93	.90	.88	.90	.88	.86	.85
4.0	.94	.90	.86	.93	.89	.85	.91	.87	.84	.89	.86	.83	.87	.84	.82	.81
5.0	.90	.85	.81	.89	.84	.81	.87	.83	.80	.85	.82	.79	.84	.81	.78	.77
6.0	.86	.81	.77	.85	.80	.77	.83	.79	.76	.82	.78	.76	.81	.77	.75	.74
7.0	.82	.77	.73	.81	.76	.73	.80	.76	.73	.79	.75	.72	.78	.74	.72	.71
8.0	.79	.74	.70	.78	.73	.70	.77	.73	.70	.76	.72	.69	.75	.72	.69	.68
9.0	.75	.71	.67	.75	.70	.67	.74	.70	.67	.73	.69	.67	.72	.69	.66	.65
10.0	.73	.68	.65	.72	.68	.65	.71	.67	.64	.71	.67	.64	.70	.66	.64	.63



C Range: 0 - 360DEG
 C Interval: 22.5DEG
 Test Speed: HIGH
 Temperature:25.3°C
 Operators:DAMIN
 Test Date:2023-11-10

γ Range: 0 - 180DEG
 γ Interval: 5.0DEG
 Test System:EVERFINE GO-2000B_V1 SYSTEM V2.00.473
 Humidity:65.0%
 Test Distance:9.401m [K=1.0000]
 Remarks:

WEC AND CCEC

Test:U:220.33V I:0.1011A P:12.217W PF:0.5483 Freq:50.00Hz Lamp Flux:1265.56x1 lm		
NAME: 射灯	TYPE:	WEIGHT:
SPEC.:	DIM.:	SERIAL No.:
MFR.: EVERFINE	SUR.: 47mm	Shielding Angle:

ρ_{CC}	80%			70%			50%			30%			10%			0
ρ_w	50%	30%	10%	50%	30%	10%	50%	30%	10%	50%	30%	10%	50%	30%	10%	0
ρ_{fc}	20%			20%			20%			20%			20%			0
RCR	RCR:Room Cavity Ratio						Wall Exitance Coefficients(WEC)									
0.0																
1.0	.158	.090	.029	.151	.086	.027	.138	.079	.025	.126	.073	.023	.115	.067	.021	
2.0	.149	.082	.025	.143	.079	.024	.132	.074	.023	.122	.069	.021	.113	.064	.020	
3.0	.140	.075	.022	.136	.073	.022	.126	.068	.021	.118	.064	.020	.110	.061	.019	
4.0	.133	.069	.020	.128	.067	.020	.120	.064	.019	.113	.061	.018	.106	.058	.018	
5.0	.125	.064	.019	.122	.063	.018	.115	.060	.018	.108	.057	.017	.102	.055	.016	
6.0	.119	.060	.017	.116	.059	.017	.110	.056	.016	.104	.054	.016	.099	.052	.015	
7.0	.113	.056	.016	.110	.055	.016	.105	.053	.015	.100	.051	.015	.095	.050	.015	
8.0	.108	.053	.015	.105	.052	.015	.101	.050	.014	.096	.049	.014	.092	.047	.014	
9.0	.103	.050	.014	.101	.049	.014	.097	.048	.014	.093	.046	.013	.089	.045	.013	
10.0	.099	.047	.013	.097	.047	.013	.093	.045	.013	.089	.044	.013	.086	.043	.012	

ρ_{CC}	80%			70%			50%			30%			10%			0
ρ_w	50%	30%	10%	50%	30%	10%	50%	30%	10%	50%	30%	10%	50%	30%	10%	0
ρ_{fc}	20%			20%			20%			20%			20%			0
RCR	RCR:Room Cavity Ratio						Ceiling Cavity Exitance Coefficients(CCEC)									
0.0	.199	.199	.199	.170	.170	.170	.116	.116	.116	.067	.067	.067	.021	.021	.021	
1.0	.178	.166	.155	.152	.142	.133	.104	.098	.092	.060	.057	.054	.019	.018	.017	
2.0	.162	.141	.124	.138	.121	.107	.095	.084	.075	.055	.049	.044	.018	.016	.014	
3.0	.148	.122	.101	.127	.105	.088	.087	.073	.061	.050	.043	.036	.016	.014	.012	
4.0	.137	.107	.084	.117	.092	.073	.081	.064	.051	.047	.038	.030	.015	.012	.010	
5.0	.127	.095	.071	.109	.082	.062	.075	.057	.044	.043	.034	.026	.014	.011	.009	
6.0	.119	.085	.061	.102	.074	.053	.070	.052	.038	.041	.030	.022	.013	.010	.007	
7.0	.112	.077	.053	.096	.067	.047	.066	.047	.033	.039	.028	.020	.012	.009	.006	
8.0	.105	.071	.047	.091	.061	.041	.063	.043	.029	.037	.025	.017	.012	.008	.006	
9.0	.100	.065	.042	.086	.057	.037	.060	.040	.026	.035	.024	.016	.011	.008	.005	
10.0	.095	.061	.038	.082	.053	.033	.057	.037	.024	.033	.022	.014	.011	.007	.005	

C Range: 0 - 360DEG
 C Interval: 22.5DEG
 Test Speed: HIGH
 Temperature:25.3°C
 Operators:DAMIN
 Test Date:2023-11-10

γ Range: 0 - 180DEG
 γ Interval: 5.0DEG
 Test System:EVERFINE GO-2000B_V1 SYSTEM V2.00.473
 Humidity:65.0%
 Test Distance:9.401m [K=1.0000]
 Remarks:

UGR(Unified Glare Rating) Table

Test:U:220.33V I:0.1011A P:12.217W PF:0.5483 Freq:50.00Hz Lamp Flux:1265.56x1 lm		
NAME: 射灯	TYPE:	WEIGHT:
SPEC.:	DIM.:	SERIAL No.:
MFR.: EVERFINE	SUR.: 47mm	Shielding Angle:

ceiling/cavity	0.7	0.7	0.5	0.5	0.3	0.7	0.7	0.5	0.5	0.3
walls	0.5	0.3	0.5	0.3	0.3	0.5	0.3	0.5	0.3	0.3
working plane	0.2	0.2	0.2	0.2	0.2	0.2	0.2	0.2	0.2	0.2

Room dimensions	Viewed crosswise					Viewed endwise				
x = 2H y = 2H	2.9	3.7	3.1	3.8	4.0	4.2	5.0	4.5	5.2	5.4
3H	2.8	3.6	3.1	3.8	4.0	4.2	4.9	4.5	5.2	5.4
4H	2.8	3.5	3.1	3.7	3.9	4.2	4.9	4.5	5.1	5.3
6H	2.7	3.4	3.0	3.6	3.9	4.1	4.8	4.5	5.0	5.3
8H	2.7	3.3	3.0	3.6	3.8	4.1	4.7	4.4	5.0	5.3
12H	2.6	3.2	2.9	3.5	3.8	4.1	4.7	4.4	5.0	5.2
4H 2H	2.8	3.5	3.1	3.7	3.9	4.1	4.8	4.4	5.0	5.2
3H	2.7	3.3	3.1	3.6	3.9	4.1	4.7	4.4	5.0	5.3
4H	2.7	3.2	3.1	3.6	3.9	4.1	4.6	4.4	4.9	5.3
6H	2.6	3.1	3.0	3.5	3.8	4.0	4.5	4.4	4.9	5.2
8H	2.6	3.0	3.0	3.4	3.8	4.0	4.4	4.4	4.8	5.2
12H	2.5	2.9	2.9	3.3	3.7	4.0	4.4	4.4	4.8	5.2
8H 4H	2.6	3.0	3.0	3.4	3.8	3.9	4.4	4.3	4.8	5.1
6H	2.5	2.9	3.0	3.3	3.7	3.9	4.3	4.3	4.7	5.1
8H	2.5	2.8	2.9	3.2	3.7	3.9	4.2	4.3	4.6	5.1
12H	2.4	2.7	2.9	3.1	3.6	3.8	4.1	4.3	4.6	5.1
12H 4H	2.5	2.9	3.0	3.3	3.7	3.9	4.3	4.3	4.7	5.1
6H	2.5	2.8	2.9	3.2	3.7	3.8	4.2	4.3	4.6	5.1
8H	2.4	2.7	2.9	3.1	3.6	3.8	4.1	4.3	4.6	5.0

Variations with the observer position at spacings(CIE Pub.117):		
S = 1.0H	+ 2.3 / - 3.8	+ 3.4 / - 4.3
1.5H	+ 4.0 / - 2.6	+ 5.6 / - 3.7
2.0H	+ 2.3 / - 2.9	+ 3.4 / - 1.6

CIE Pub.117, 1266 lm Total Lamp Luminous Flux Correct (8log(F/F0) = 0.8)
Area: 0.074 m2

C Range: 0 - 360DEG
C Interval: 22.5DEG
Test Speed: HIGH
Temperature:25.3°C
Operators:DAMIN
Test Date:2023-11-10

γ Range: 0 - 180DEG
γ Interval: 5.0DEG
Test System:EVERFINE GO-2000B_V1 SYSTEM V2.00.473
Humidity:65.0%
Test Distance:9.401m [K=1.0000]
Remarks:

UTILIZATION FACTORS TABLE

Test:U:220.33V I:0.1011A P:12.217W PF:0.5483 Freq:50.00Hz Lamp Flux:1265.56x1 lm		
NAME: 射灯	TYPE:	WEIGHT:
SPEC.:	DIM.:	SERIAL No.:
MFR.: EVERFINE	SUR.: 47mm	Shielding Angle:

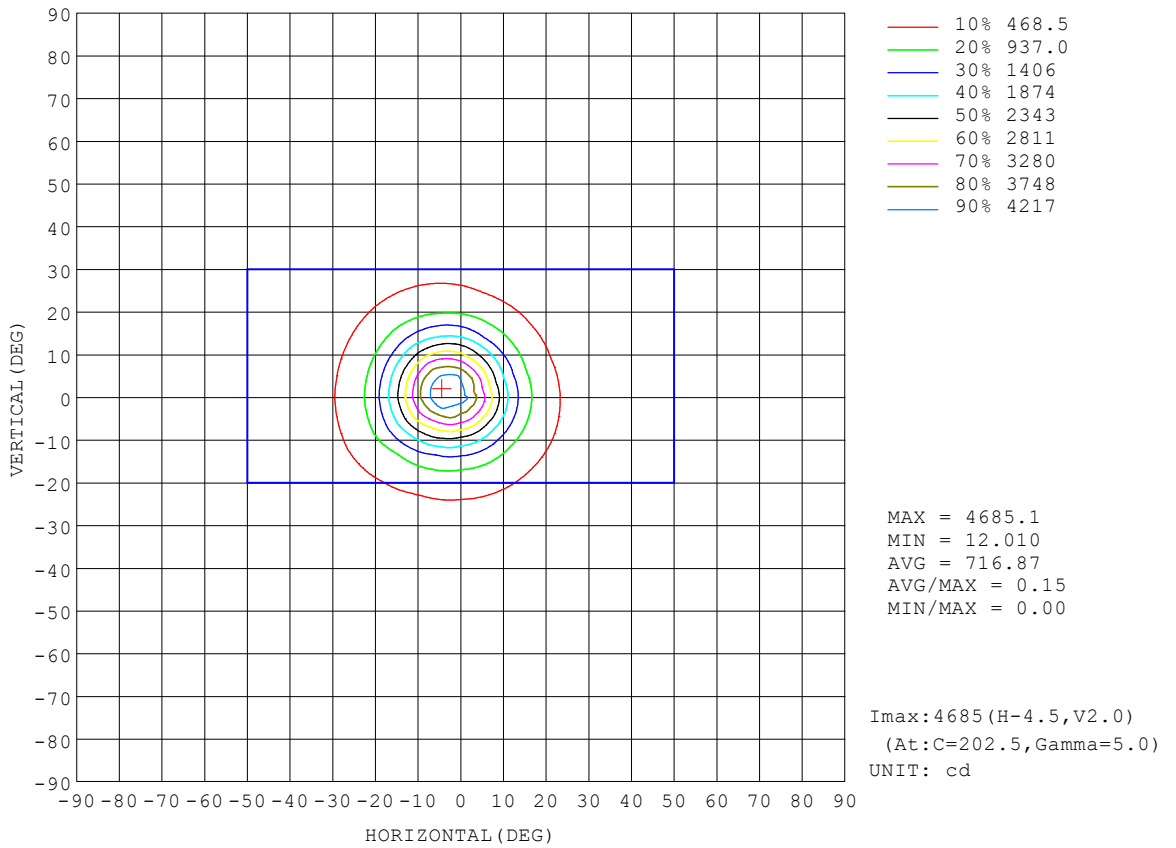
REFLECTANCE										
Ceiling	0.8	0.8	0.8	0.7	0.7	0.7	0.5	0.5	0.5	0
Walls	0.7	0.5	0.3	0.7	0.5	0.3	0.7	0.5	0.3	0
Working plane	0.2	0.2	0.2	0.2	0.2	0.2	0.2	0.2	0.2	0
ROOM INDEX	UTILIZATION FACTORS (PERCENT) $k(RI) \times RCR = 5$									
k = 0.60	87	81	77	87	81	77	86	80	77	73
0.80	95	89	85	94	88	85	93	88	84	81
1.00	99	93	90	98	93	89	96	93	89	85
1.25	103	98	94	102	97	94	100	96	93	89
1.50	106	101	98	104	100	97	102	99	96	91
2.00	108	104	101	107	103	100	104	101	98	93
2.50	110	106	103	108	105	102	105	102	100	94
3.00	111	108	105	110	107	104	106	104	102	95
4.00	114	111	109	111	109	107	108	106	104	97
5.00	115	113	111	113	111	109	108	107	106	98
ROOM INDEX	UF(total)									Direct
According to DIN EN 13032-2 2004			Suspended				SHRNOM = 1.25			

C Range: 0 - 360DEG
 C Interval: 22.5DEG
 Test Speed: HIGH
 Temperature:25.3°C
 Operators:DAMIN
 Test Date:2023-11-10

γ Range: 0 - 180DEG
 γ Interval: 5.0DEG
 Test System:EVERFINE GO-2000B_V1 SYSTEM V2.00.473
 Humidity:65.0%
 Test Distance:9.401m [K=1.0000]
 Remarks:

ISOCANDELA DIAGRAM

Test:U:220.33V I:0.1011A P:12.217W PF:0.5483 Freq:50.00Hz Lamp Flux:1265.56x1 lm		
NAME: 射灯	TYPE:	WEIGHT:
SPEC.:	DIM.:	SERIAL No.:
MFR.: EVERFINE	SUR.: 47mm	Shielding Angle:

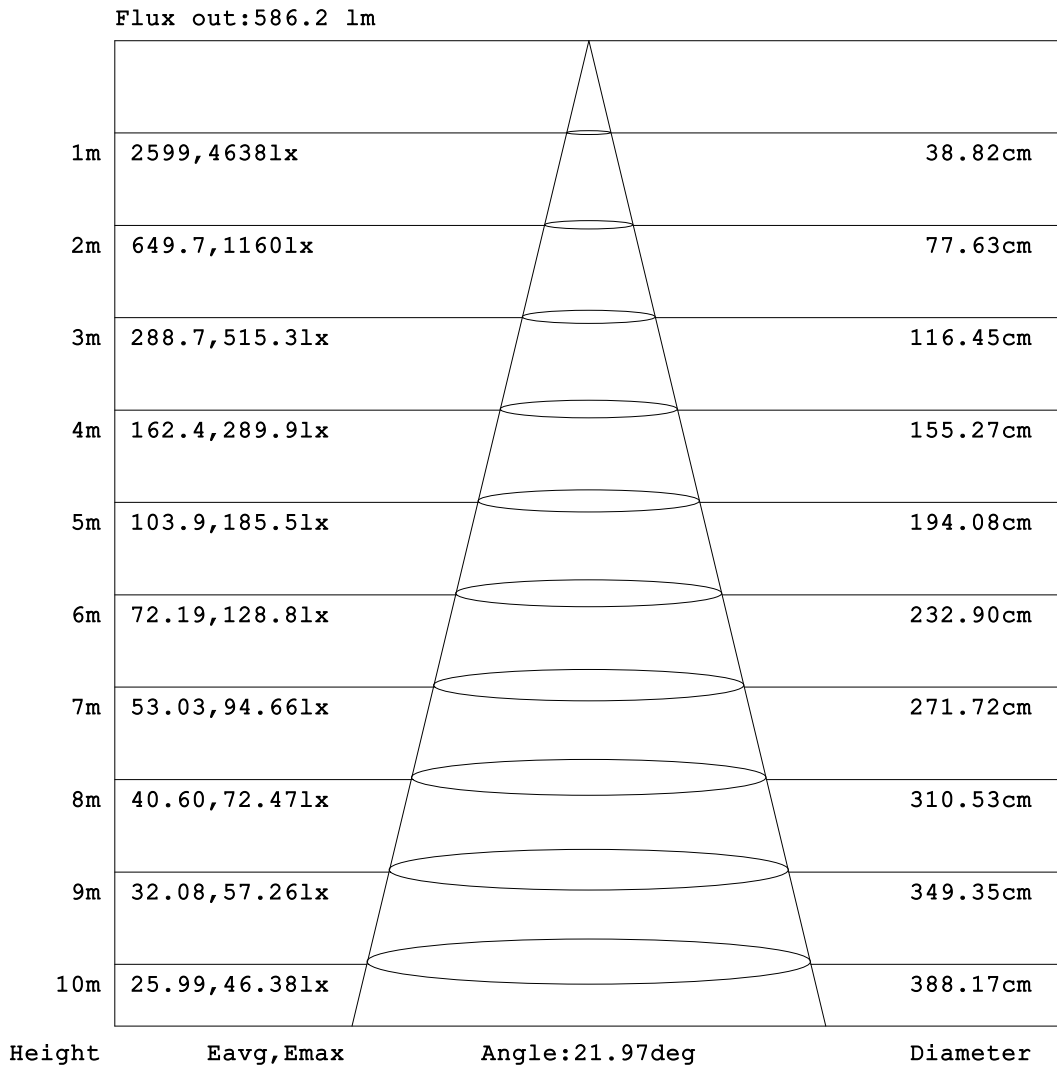


C Range: 0 - 360DEG
 C Interval: 22.5DEG
 Test Speed: HIGH
 Temperature: 25.3°C
 Operators: DAMIN
 Test Date: 2023-11-10

γ Range: 0 - 180DEG
 γ Interval: 5.0DEG
 Test System: EVERFINE GO-2000B_V1 SYSTEM V2.00.473
 Humidity: 65.0%
 Test Distance: 9.401m [K=1.0000]
 Remarks:

AAI Figure

Test:U:220.33V I:0.1011A P:12.217W PF:0.5483 Freq:50.00Hz Lamp Flux:1265.56x1 lm		
NAME: 射灯	TYPE:	WEIGHT:
SPEC.:	DIM.:	SERIAL No.:
MFR.: EVERFINE	SUR.: 47mm	Shielding Angle:



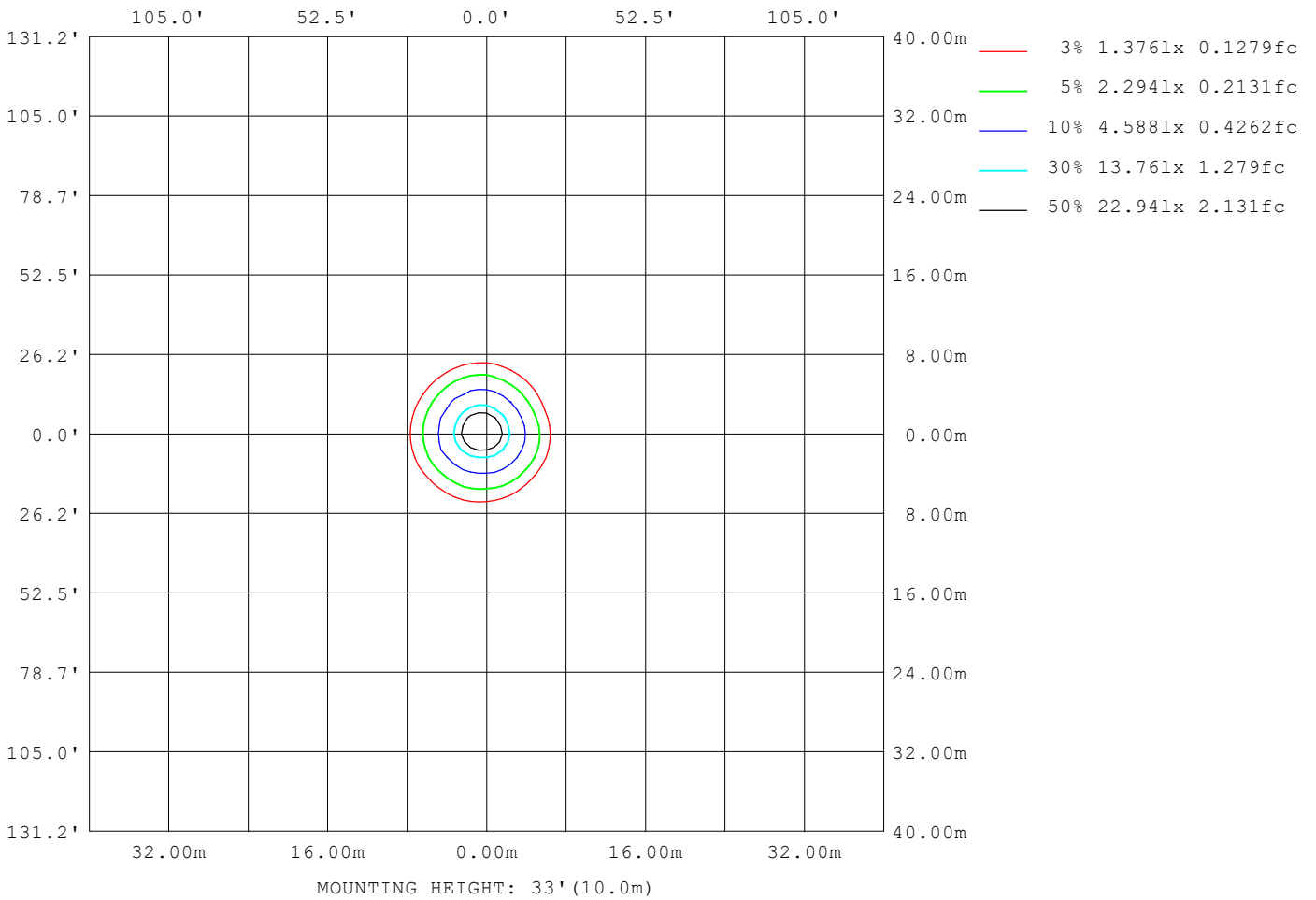
Note:The Curves indicate the illuminated area and the average illumination when the luminaire is at different distance.

C Range: 0 - 360DEG
C Interval: 22.5DEG
Test Speed: HIGH
Temperature:25.3°C
Operators:DAMIN
Test Date:2023-11-10

γ Range: 0 - 180DEG
γ Interval: 5.0DEG
Test System:EVERFINE GO-2000B_V1 SYSTEM V2.00.473
Humidity:65.0%
Test Distance:9.401m [K=1.0000]
Remarks:

ISOLUX DIAGRAM

Test:U:220.33V I:0.1011A P:12.217W PF:0.5483 Freq:50.00Hz Lamp Flux:1265.56x1 lm		
NAME: 射灯	TYPE:	WEIGHT:
SPEC.:	DIM.:	SERIAL No.:
MFR.: EVERFINE	SUR.: 47mm	Shielding Angle:



C Range: 0 - 360DEG
C Interval: 22.5DEG
Test Speed: HIGH
Temperature:25.3°C
Operators:DAMIN
Test Date:2023-11-10

γ Range: 0 - 180DEG
γ Interval: 5.0DEG
Test System:EVERFINE GO-2000B_V1 SYSTEM V2.00.473
Humidity:65.0%
Test Distance:9.401m [K=1.0000]
Remarks:

LED Avg.L Report

Test:U:220.33V I:0.1011A P:12.217W PF:0.5483 Freq:50.00Hz Lamp Flux:1265.56x1 lm		
NAME: 射灯	TYPE:	WEIGHT:
SPEC.:	DIM.:	SERIAL No.:
MFR.: EVERFINE	SUR.: 47mm	Shielding Angle:

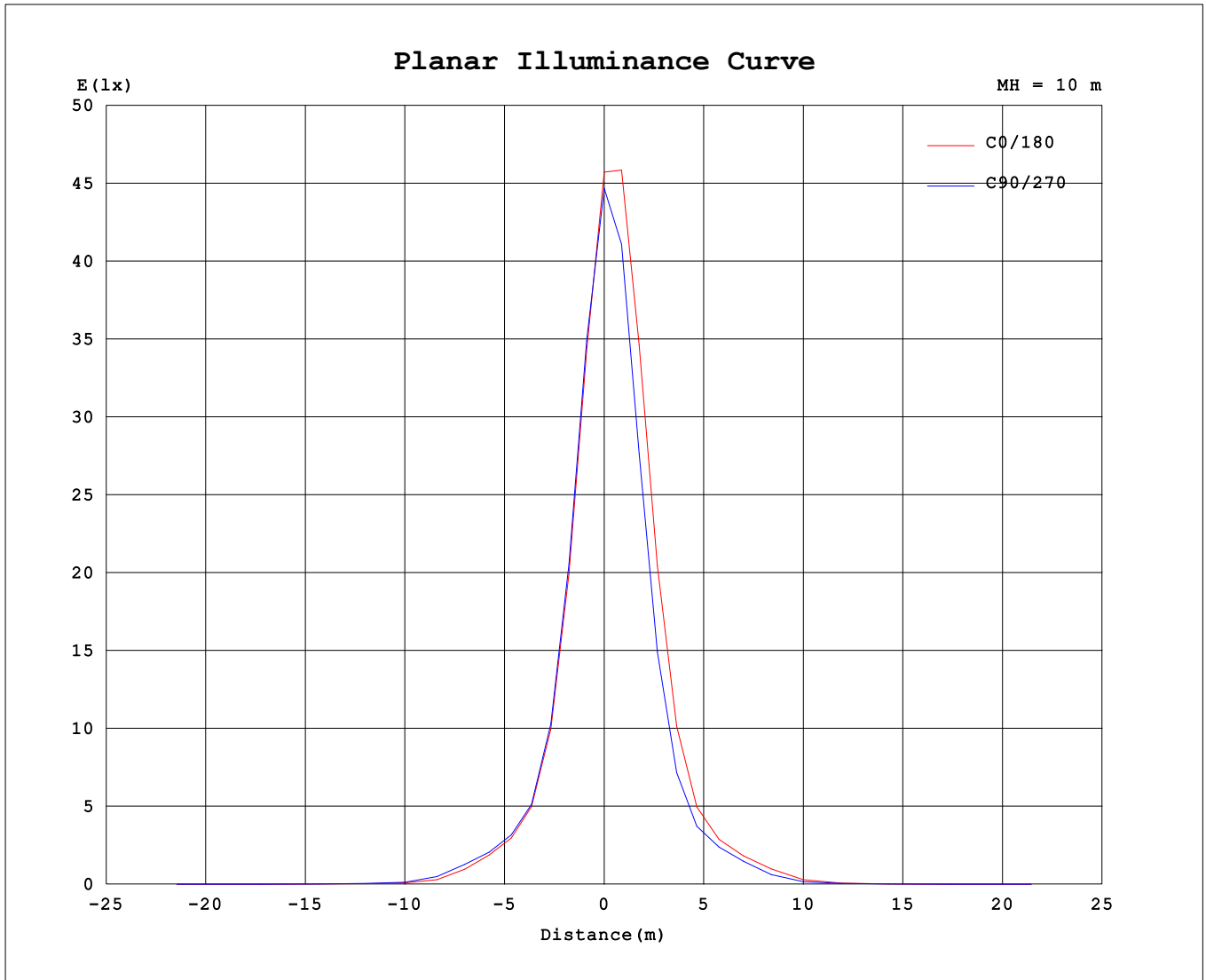
AvgL	cd/m2
L_0~180 (65) av	201
L_0~180 (75) av	115
L_0~180 (85) av	72
L_90~270 (65) av	276
L_90~270 (75) av	134
L_90~270 (85) av	93
L_45 (65) av	246
L_45 (75) av	128
L_45 (85) av	86

Standard: GB/T 29293-2012

C Range: 0 - 360DEG
 C Interval: 22.5DEG
 Test Speed: HIGH
 Temperature:25.3°C
 Operators:DAMIN
 Test Date:2023-11-10

γ Range: 0 - 180DEG
 γ Interval: 5.0DEG
 Test System:EVERFINE GO-2000B_V1 SYSTEM V2.00.473
 Humidity:65.0%
 Test Distance:9.401m [K=1.0000]
 Remarks:

Planar Illuminance Curve



C Range: 0 - 360DEG
 C Interval: 22.5DEG
 Test Speed: HIGH
 Temperature: 25.3°C
 Operators: DAMIN
 Test Date: 2023-11-10

γ Range: 0 - 180DEG
 γ Interval: 5.0DEG
 Test System: EVERFINE GO-2000B_V1 SYSTEM V2.00.473
 Humidity: 65.0%
 Test Distance: 9.401m [K=1.0000]
 Remarks:

LUMINOUS DISTRIBUTION INTENSITY DATA

Test:U:220.33V I:0.1011A P:12.217W PF:0.5483 Freq:50.00Hz Lamp Flux:1265.56x1 lm		
NAME: 射灯	TYPE:	WEIGHT:
SPEC.:	DIM.:	SERIAL No.:
MFR.: EVERFINE	SUR.: 47mm	Shielding Angle:

Table--1

UNIT: cd

C (DEG) \ γ (DEG)	0	22.5	45	67.5	90	112.5	135	157.5	180	202.5	225	247.5	270	292.5	315	337.5			
0	4490	4490	4490	4490	4490	4490	4490	4490	4490	4490	4490	4490	4490	4490	4490	4490			
5	3398	3363	3342	3440	3546	3820	4090	4423	4555	4619	4605	4393	4177	3881	3673	3450			
10	2053	2019	2003	2065	2166	2449	2822	3353	3560	3621	3576	3218	2909	2544	2310	2098			
15	1087	1064	1057	1096	1149	1334	1679	2091	2229	2237	2169	1906	1664	1404	1237	1115			
20	590	593	595	610	621	704	873	1151	1201	1188	1153	1007	870	726	640	594			
25	394	407	407	416	429	458	525	639	657	636	617	559	504	446	404	392			
30	286	288	285	304	321	350	380	434	439	429	424	401	371	321	295	278			
35	174	176	178	205	234	262	285	317	327	318	306	291	273	235	208	176			
40	64.4	66.8	75.6	90.0	113	152	184	223	218	207	197	171	140	107	86.1	70.9			
45	25.9	27.6	30.1	34.3	40.1	53.2	69.8	88.1	82.7	80.0	77.5	62.8	49.2	37.8	32.3	29.2			
50	16.9	18.0	19.7	20.5	21.3	23.0	26.2	30.2	27.5	29.4	29.6	25.2	21.1	19.1	19.1	18.4			
55	12.0	12.9	14.3	15.0	15.9	17.7	18.3	19.5	17.6	18.7	19.2	16.9	15.3	14.4	14.2	13.2			
60	7.71	8.12	9.68	10.9	12.5	13.5	13.5	14.4	12.7	12.9	13.5	12.3	11.4	10.5	9.96	8.81			
65	4.42	5.01	5.88	7.41	9.39	10.5	9.62	9.41	8.17	8.02	9.05	8.44	7.89	7.08	6.27	5.26			
70	2.80	2.86	3.24	3.67	4.05	4.64	5.35	5.68	4.44	4.95	5.12	4.39	3.85	3.59	3.27	2.94			
75	1.65	1.68	1.95	2.31	2.62	2.87	3.06	2.97	2.75	2.76	2.78	2.75	2.52	2.33	2.04	1.77			
80	0.73	0.73	0.95	1.22	1.51	1.71	1.86	1.78	1.67	1.68	1.64	1.67	1.47	1.31	1.05	0.82			
85	0.17	0.15	0.27	0.40	0.61	0.76	0.91	0.83	0.76	0.79	0.77	0.80	0.59	0.47	0.25	0.20			
90	0.02	0.03	0.01	0.02	0.01	0.05	0.22	0.21	0.19	0.24	0.14	0.10	0.04	0.03	0.03	0.03			
95	0.02	0.05	0.01	0.04	0.01	0.02	0.01	0.02	0.04	0.04	0.04	0.02	0.05	0.03	0.07	0.03			
100	0.04	0.09	0.02	0.08	0.01	0.05	0.01	0.04	0.07	0.04	0.07	0.02	0.09	0.04	0.13	0.09			
105	0.14	0.20	0.12	0.17	0.07	0.11	0.04	0.08	0.13	0.07	0.13	0.09	0.19	0.15	0.25	0.21			
110	0.31	0.36	0.29	0.32	0.21	0.24	0.12	0.18	0.25	0.18	0.25	0.22	0.32	0.32	0.43	0.42			
115	0.54	0.59	0.52	0.52	0.40	0.41	0.29	0.32	0.42	0.36	0.44	0.41	0.52	0.53	0.68	0.70			
120	0.90	0.94	0.85	0.83	0.67	0.64	0.50	0.52	0.68	0.62	0.70	0.67	0.80	0.84	1.03	1.11			
125	1.48	1.52	1.42	1.32	1.13	1.03	0.86	0.84	1.08	1.00	1.09	1.07	1.24	1.35	1.62	1.79			
130	2.36	2.42	2.30	2.14	1.87	1.67	1.44	1.37	1.75	1.65	1.72	1.74	1.96	2.17	2.52	2.82			
135	3.57	3.64	3.54	3.29	2.96	2.65	2.35	2.21	2.76	2.64	2.68	2.77	3.05	3.38	3.81	4.18			
140	4.90	4.98	4.92	4.67	4.33	3.96	3.61	3.37	4.12	3.96	4.02	4.12	4.48	4.84	5.27	5.58			
145	6.07	6.14	6.09	5.92	5.63	5.32	4.97	4.74	5.52	5.36	5.43	5.54	5.89	6.18	6.52	6.75			
150	6.87	6.93	6.87	6.82	6.63	6.40	6.10	5.96	6.65	6.50	6.59	6.66	6.95	7.10	7.32	7.41			
155	7.18	7.18	7.19	7.25	7.16	7.05	6.83	6.79	7.31	7.14	7.28	7.26	7.51	7.51	7.54	7.56			
160	7.09	7.00	7.12	7.15	7.26	7.14	7.07	7.08	7.37	7.29	7.35	7.39	7.48	7.53	7.34	7.29			
165	6.54	6.42	6.52	6.74	6.92	6.87	6.89	6.90	7.06	7.01	6.98	7.12	7.11	7.08	6.73	6.60			
170	5.70	5.67	5.79	5.95	6.17	6.16	6.29	6.36	6.37	6.38	6.33	6.33	6.31	6.23	5.94	5.86			
175	5.24	5.30	5.47	5.46	5.55	5.56	5.76	5.75	5.66	5.73	5.73	5.67	5.56	5.62	5.52	5.45			
180	5.32	5.34	5.45	5.40	5.42	5.42	5.54	5.49	5.39	5.39	5.47	5.40	5.42	5.44	5.49	5.43			

C Range: 0 - 360DEG
 C Interval: 22.5DEG
 Test Speed: HIGH
 Temperature:25.3°C
 Operators:DAMIN
 Test Date:2023-11-10

γ Range: 0 - 180DEG
 γ Interval: 5.0DEG
 Test System:EVERFINE GO-2000B_V1 SYSTEM V2.00.473
 Humidity:65.0%
 Test Distance:9.401m [K=1.0000]
 Remarks: