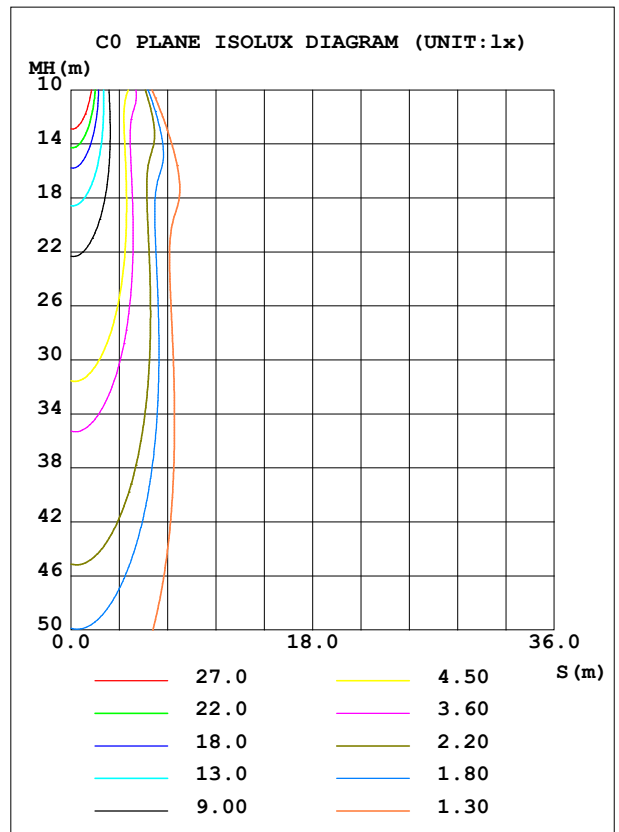
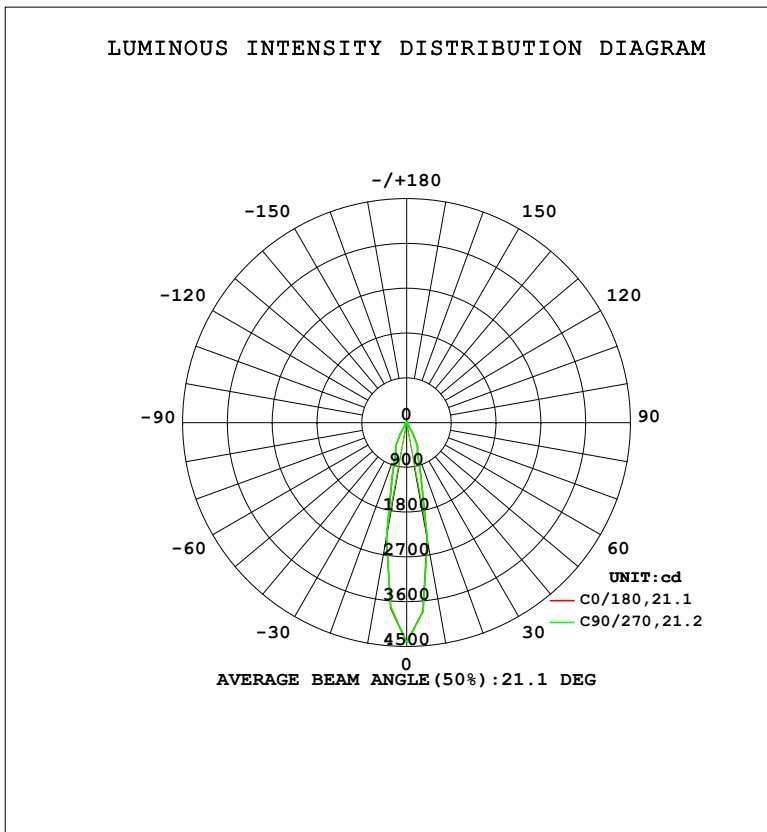


LUMINAIRE PHOTOMETRIC TEST REPORT

Test:U:220.37V I:0.1004A P:12.142W PF:0.5485 Freq:50.00Hz Lamp Flux:1083.14x1 lm		
NAME: 射灯	TYPE:	WEIGHT:
SPEC.:	DIM.:	SERIAL No.:
MFR.: EVERFINE	SUR.: 35mm	Shielding Angle:

DATA OF LAMP		PHOTOMETRIC DATA				Eff: 89.21 lm/W
MODEL	322B	I <sub>max</sub> (cd)	4414	S/MH (C0/180)	0.36	
NOMINAL POWER (W)	12	LOR (%)	100.0	S/MH (C90/270)	0.36	
RATED VOLTAGE (V)	220	TOTAL FLUX (lm)	1083.1	η UP, DN (C0-180)	0.5, 49.7	
NOMINAL FLUX (lm)	1083.14	CIE CLASS	DIRECT	η UP, DN (C180-360)	0.6, 49.2	
LAMPS INSIDE	1	η up (%)	1.1	CIBSE SHR NOM	0.00	
TEST VOLTAGE (V)	219.5	η down (%)	98.9	CIBSE SHR MAX	0.30	



C Range: 0 - 360DEG  
 C Interval: 22.5DEG  
 Test Speed: HIGH  
 Temperature: 25.3°C  
 Operators: DAMIN  
 Test Date: 2023-11-10

γ Range: 0 - 180DEG  
 γ Interval: 5.0DEG  
 Test System: EVERFINE GO-2000B\_V1 SYSTEM V2.00.473  
 Humidity: 65.0%  
 Test Distance: 9.401m [K=1.0000]  
 Remarks:

ZONAL FLUX DIAGRAM

ZONAL FLUX DIAGRAM:

γ	C0	C45	C90	C135	C180	C225	C270	C315	γ	Φ zone	Φ total	%lum,lamp
10	2375	2394	2416	2387	2365	2341	2353	2387	0- 10	318.6	318.6	29.4,29.4
20	648.5	644.8	651.5	650.8	649.1	654.2	660.6	654.7	10- 20	355.5	674.2	62.2,62.2
30	264.9	253.2	249.8	252.8	260.1	260.5	266.2	269.8	20- 30	221.3	895.4	82.7,82.7
40	55.77	56.46	56.53	56.27	55.10	54.44	53.47	53.32	30- 40	68.16	963.6	89,89
50	48.17	48.69	48.25	47.99	46.99	45.90	45.85	45.95	40- 50	39.70	1003	92.6,92.6
60	36.61	36.24	37.07	36.73	35.77	35.83	35.38	35.83	50- 60	37.52	1041	96.1,96.1
70	12.77	12.26	9.284	12.56	13.63	12.68	9.504	12.06	60- 70	25.09	1066	98.4,98.4
80	1.270	0.9039	0.4856	0.8122	1.214	0.9742	0.5472	0.8897	70- 80	5.392	1071	98.9,98.9
90	0.0594	0.0600	0.0604	0.0607	0.0950	0.0780	0.0785	0.0790	80- 90	0.3299	1072	98.9,98.9
100	0.0712	0.0659	0.0603	0.0607	0.1603	0.1500	0.1569	0.1519	90-100	0.0960	1072	98.9,98.9
110	0.1660	0.1497	0.1566	0.1577	0.2852	0.2761	0.2718	0.2735	100-110	0.1640	1072	99,99
120	0.5040	0.5031	0.5061	0.5094	0.7486	0.7261	0.7245	0.7293	110-120	0.3905	1072	99,99
130	1.352	1.353	1.374	1.383	1.854	1.819	1.824	1.812	120-130	0.9331	1073	99.1,99.1
140	3.428	3.426	3.441	3.439	4.235	4.205	4.195	4.192	130-140	2.025	1075	99.3,99.3
150	5.495	5.496	5.523	5.499	6.115	6.074	6.069	6.096	140-150	3.057	1078	99.6,99.6
160	6.108	6.085	6.140	6.010	6.214	6.132	6.248	6.234	150-160	2.805	1081	99.8,99.8
170	5.142	5.127	5.165	4.998	4.913	4.704	4.817	4.892	160-170	1.613	1083	100,100
180	4.173	4.160	4.077	4.183	4.173	4.124	4.041	4.134	170-180	0.4341	1083	100,100
DEG	LUMINOUS INTENSITY:cd									UNIT:lm		

Conical surface Flux(90deg): 983.34 lm

%lum = 90.8%

%lamp = 90.8%

Conical surface Flux(130deg): 1056.1 lm

%lum = 97.5%

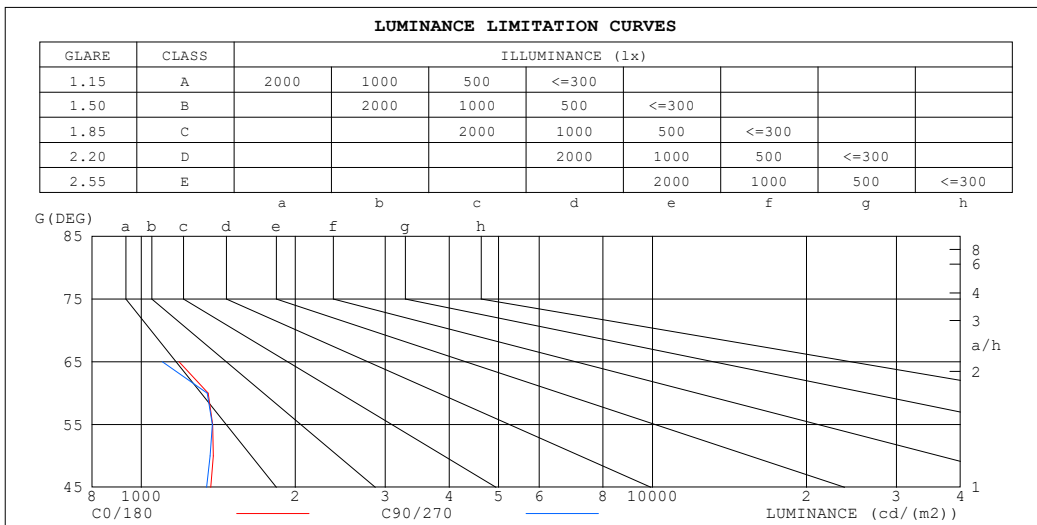
%lamp = 97.5%

C Range: 0 - 360DEG  
 C Interval: 22.5DEG  
 Test Speed: HIGH  
 Temperature:25.3°C  
 Operators:DAMIN  
 Test Date:2023-11-10

γ Range: 0 - 180DEG  
 γ Interval: 5.0DEG  
 Test System:EVERFINE GO-2000B\_V1 SYSTEM V2.00.473  
 Humidity:65.0%  
 Test Distance:9.401m [K=1.0000]  
 Remarks:

**LUMINANCE LIMITATION CURVES**

Test:U:220.37V I:0.1004A P:12.142W PF:0.5485 Freq:50.00Hz Lamp Flux:1083.14x1 lm		
NAME: 射灯	TYPE:	WEIGHT:
SPEC.:	DIM.:	SERIAL No.:
MFR.: EVERFINE	SUR.: 35mm	Shielding Angle:



LUMINANCE cd/(m2)		
G (DEG)	C0/180	C90/270
85	43	19
80	135	51
75	347	174
70	689	493
65	1185	1099
60	1350	1346
55	1378	1377
50	1382	1362
45	1368	1342

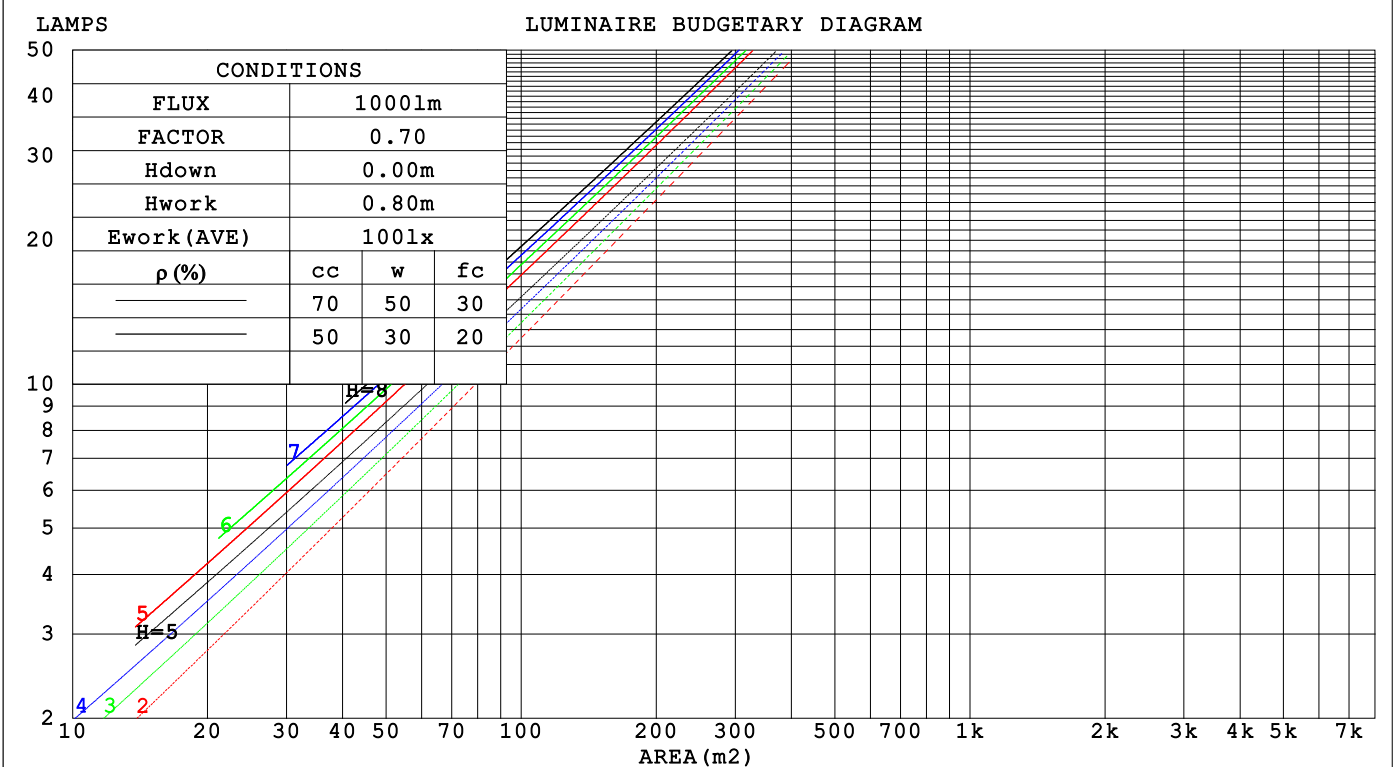
C Range: 0 - 360DEG  
 C Interval: 22.5DEG  
 Test Speed: HIGH  
 Temperature: 25.3°C  
 Operators: DAMIN  
 Test Date: 2023-11-10

γ Range: 0 - 180DEG  
 γ Interval: 5.0DEG  
 Test System: EVERFINE GO-2000B\_V1 SYSTEM V2.00.473  
 Humidity: 65.0%  
 Test Distance: 9.401m [K=1.0000]  
 Remarks:

CU AND LUMINAIRE BUDGETARY ESTIMATE DIAGRAM

Test:U:220.37V I:0.1004A P:12.142W PF:0.5485 Freq:50.00Hz Lamp Flux:1083.14x1 lm		
NAME: 射灯	TYPE:	WEIGHT:
SPEC.:	DIM.:	SERIAL No.:
MFR.: EVERFINE	SUR.: 35mm	Shielding Angle:

pcc	80%			70%			50%			30%			10%			0
pw	50%	30%	10%	50%	30%	10%	50%	30%	10%	50%	30%	10%	50%	30%	10%	0
pfc	20%			20%			20%			20%			20%			0
RCR	RCR:Room Cavity Ratio						Coefficients of Utilization(CU)									
0.0	1.19	1.19	1.19	1.16	1.16	1.16	1.11	1.11	1.11	1.06	1.06	1.06	1.01	1.01	1.01	.99
1.0	1.11	1.09	1.07	1.09	1.07	1.05	1.05	1.03	1.02	1.01	.99	.99	.97	.96	.95	.94
2.0	1.05	1.01	.98	1.03	.99	.97	.99	.97	.94	.96	.94	.92	.93	.92	.90	.89
3.0	.99	.94	.91	.97	.93	.90	.95	.91	.88	.92	.89	.87	.90	.87	.85	.84
4.0	.94	.89	.85	.92	.88	.84	.90	.86	.83	.88	.85	.82	.86	.84	.81	.80
5.0	.89	.84	.80	.88	.83	.80	.86	.82	.79	.85	.81	.78	.83	.80	.78	.76
6.0	.85	.80	.76	.84	.80	.76	.83	.79	.76	.81	.78	.75	.80	.77	.74	.73
7.0	.82	.77	.73	.81	.76	.73	.80	.75	.72	.78	.75	.72	.77	.74	.72	.70
8.0	.78	.73	.70	.78	.73	.70	.77	.73	.70	.76	.72	.69	.75	.71	.69	.68
9.0	.76	.71	.67	.75	.70	.67	.74	.70	.67	.73	.69	.67	.72	.69	.66	.65
10.0	.73	.68	.65	.73	.68	.65	.72	.68	.65	.71	.67	.65	.70	.67	.64	.63



C Range: 0 - 360DEG  
 C Interval: 22.5DEG  
 Test Speed: HIGH  
 Temperature:25.3°C  
 Operators:DAMIN  
 Test Date:2023-11-10

γ Range: 0 - 180DEG  
 γ Interval: 5.0DEG  
 Test System:EVERFINE GO-2000B\_V1 SYSTEM V2.00.473  
 Humidity:65.0%  
 Test Distance:9.401m [K=1.0000]  
 Remarks:

WEC AND CCEC

Test:U:220.37V I:0.1004A P:12.142W PF:0.5485 Freq:50.00Hz		
Lamp Flux:1083.14x1 lm		
NAME: 射灯	TYPE:	WEIGHT:
SPEC.:	DIM.:	SERIAL No.:
MFR.: EVERFINE	SUR.: 35mm	Shielding Angle:

$\rho_{CC}$	80%			70%			50%			30%			10%			0
$\rho_w$	50%	30%	10%	50%	30%	10%	50%	30%	10%	50%	30%	10%	50%	30%	10%	0
$\rho_{fc}$	20%			20%			20%			20%			20%			0
RCR	RCR:Room Cavity Ratio						Wall Exitance Coefficients(WEC)									
0.0																
1.0	.163	.093	.029	.156	.089	.028	.143	.082	.026	.131	.076	.024	.120	.070	.022	
2.0	.154	.085	.026	.148	.082	.025	.137	.076	.024	.127	.071	.022	.118	.067	.021	
3.0	.145	.077	.023	.140	.075	.023	.130	.071	.021	.122	.067	.020	.114	.063	.019	
4.0	.136	.071	.021	.132	.069	.020	.124	.066	.020	.116	.062	.019	.109	.059	.018	
5.0	.128	.065	.019	.124	.064	.019	.117	.061	.018	.111	.058	.017	.105	.056	.017	
6.0	.120	.060	.017	.117	.059	.017	.111	.057	.017	.106	.055	.016	.100	.053	.016	
7.0	.114	.056	.016	.111	.055	.016	.106	.053	.015	.101	.052	.015	.096	.050	.015	
8.0	.108	.053	.015	.106	.052	.015	.101	.050	.014	.096	.049	.014	.092	.047	.014	
9.0	.103	.050	.014	.101	.049	.014	.096	.048	.014	.092	.046	.013	.089	.045	.013	
10.0	.098	.047	.013	.096	.046	.013	.092	.045	.013	.089	.044	.013	.085	.043	.012	

$\rho_{CC}$	80%			70%			50%			30%			10%			0
$\rho_w$	50%	30%	10%	50%	30%	10%	50%	30%	10%	50%	30%	10%	50%	30%	10%	0
$\rho_{fc}$	20%			20%			20%			20%			20%			0
RCR	RCR:Room Cavity Ratio						Ceiling Cavity Exitance Coefficients(CCEC)									
0.0	.199	.199	.199	.170	.170	.170	.116	.116	.116	.067	.067	.067	.021	.021	.021	
1.0	.178	.166	.154	.153	.142	.133	.104	.098	.092	.060	.057	.053	.019	.018	.017	
2.0	.162	.141	.123	.139	.121	.106	.095	.084	.074	.055	.049	.043	.018	.016	.014	
3.0	.149	.122	.100	.127	.105	.087	.087	.073	.061	.051	.043	.036	.016	.014	.012	
4.0	.137	.107	.084	.118	.092	.073	.081	.064	.051	.047	.038	.030	.015	.012	.010	
5.0	.127	.095	.071	.109	.082	.062	.075	.057	.043	.044	.034	.026	.014	.011	.008	
6.0	.119	.085	.061	.102	.074	.053	.071	.052	.038	.041	.030	.022	.013	.010	.007	
7.0	.112	.077	.053	.096	.067	.046	.066	.047	.033	.039	.028	.020	.012	.009	.006	
8.0	.105	.071	.047	.091	.061	.041	.063	.043	.029	.037	.025	.017	.012	.008	.006	
9.0	.100	.065	.042	.086	.057	.037	.060	.040	.026	.035	.024	.016	.011	.008	.005	
10.0	.095	.061	.038	.082	.053	.033	.057	.037	.024	.033	.022	.014	.011	.007	.005	

C Range: 0 - 360DEG  
 C Interval: 22.5DEG  
 Test Speed: HIGH  
 Temperature:25.3°C  
 Operators:DAMIN  
 Test Date:2023-11-10

$\gamma$  Range: 0 - 180DEG  
 $\gamma$  Interval: 5.0DEG  
 Test System:EVERFINE GO-2000B\_V1 SYSTEM V2.00.473  
 Humidity:65.0%  
 Test Distance:9.401m [K=1.0000]  
 Remarks:

**UGR(Unified Glare Rating) Table**

Test:U:220.37V I:0.1004A P:12.142W PF:0.5485 Freq:50.00Hz										
Lamp Flux:1083.14x1 lm										
NAME: 射灯			TYPE:				WEIGHT:			
SPEC.:			DIM.:				SERIAL No.:			
MFR.: EVERFINE			SUR.: 35mm				Shielding Angle:			
ceiling/cavity	0.7	0.7	0.5	0.5	0.3	0.7	0.7	0.5	0.5	0.3
walls	0.5	0.3	0.5	0.3	0.3	0.5	0.3	0.5	0.3	0.3
working plane	0.2	0.2	0.2	0.2	0.2	0.2	0.2	0.2	0.2	0.2
Room dimensions	Viewed crosswise					Viewed endwise				
x = 2H y = 2H	8.7	9.5	8.9	9.6	9.8	8.6	9.4	8.9	9.6	9.8
3H	9.3	10.0	9.5	10.2	10.4	9.0	9.7	9.2	9.9	10.1
4H	9.3	10.0	9.5	10.2	10.4	8.9	9.6	9.2	9.9	10.1
6H	9.2	9.9	9.5	10.1	10.4	8.8	9.5	9.1	9.8	10.0
8H	9.1	9.8	9.5	10.1	10.3	8.8	9.4	9.1	9.7	10.0
12H	9.1	9.7	9.4	10.0	10.3	8.7	9.4	9.1	9.6	9.9
4H 2H	9.2	9.9	9.5	10.1	10.3	9.2	9.9	9.4	10.1	10.3
3H	9.8	10.4	10.1	10.7	11.0	9.5	10.1	9.8	10.4	10.7
4H	9.8	10.3	10.1	10.7	11.0	9.4	10.0	9.8	10.3	10.6
6H	9.7	10.2	10.1	10.5	10.9	9.3	9.8	9.7	10.2	10.5
8H	9.6	10.1	10.0	10.5	10.9	9.3	9.7	9.7	10.1	10.5
12H	9.6	10.0	10.0	10.4	10.8	9.2	9.6	9.6	10.0	10.4
8H 4H	9.7	10.1	10.1	10.5	10.9	9.3	9.8	9.7	10.1	10.5
6H	9.6	10.0	10.0	10.4	10.8	9.2	9.6	9.7	10.0	10.4
8H	9.5	9.9	10.0	10.3	10.8	9.2	9.5	9.6	9.9	10.4
12H	9.5	9.8	9.9	10.2	10.7	9.1	9.4	9.6	9.8	10.3
12H 4H	9.6	10.0	10.0	10.4	10.8	9.3	9.7	9.7	10.1	10.5
6H	9.5	9.9	10.0	10.3	10.8	9.2	9.5	9.6	9.9	10.4
8H	9.5	9.7	9.9	10.2	10.7	9.1	9.4	9.6	9.8	10.3
Variations with the observer position at spacings(CIE Pub.117):										
S = 1.0H	+ 0.3 / - 0.2					+ 0.4 / - 0.3				
1.5H	+ 0.7 / - 0.9					+ 1.0 / - 1.1				
2.0H	+ 0.8 / - 1.4					+ 0.8 / - 1.6				

CIE Pub.117, 1083 lm Total Lamp Luminous Flux Correct (8log(F/F0) = 0.3)  
 Area: 0.055 m2

C Range: 0 - 360DEG  
 C Interval: 22.5DEG  
 Test Speed: HIGH  
 Temperature:25.3°C  
 Operators:DAMIN  
 Test Date:2023-11-10

γ Range: 0 - 180DEG  
 γ Interval: 5.0DEG  
 Test System:EVERFINE GO-2000B\_V1 SYSTEM V2.00.473  
 Humidity:65.0%  
 Test Distance:9.401m [K=1.0000]  
 Remarks:

**UTILIZATION FACTORS TABLE**

Test:U:220.37V I:0.1004A P:12.142W PF:0.5485 Freq:50.00Hz Lamp Flux:1083.14x1 lm		
NAME: 射灯	TYPE:	WEIGHT:
SPEC.:	DIM.:	SERIAL No.:
MFR.: EVERFINE	SUR.: 35mm	Shielding Angle:

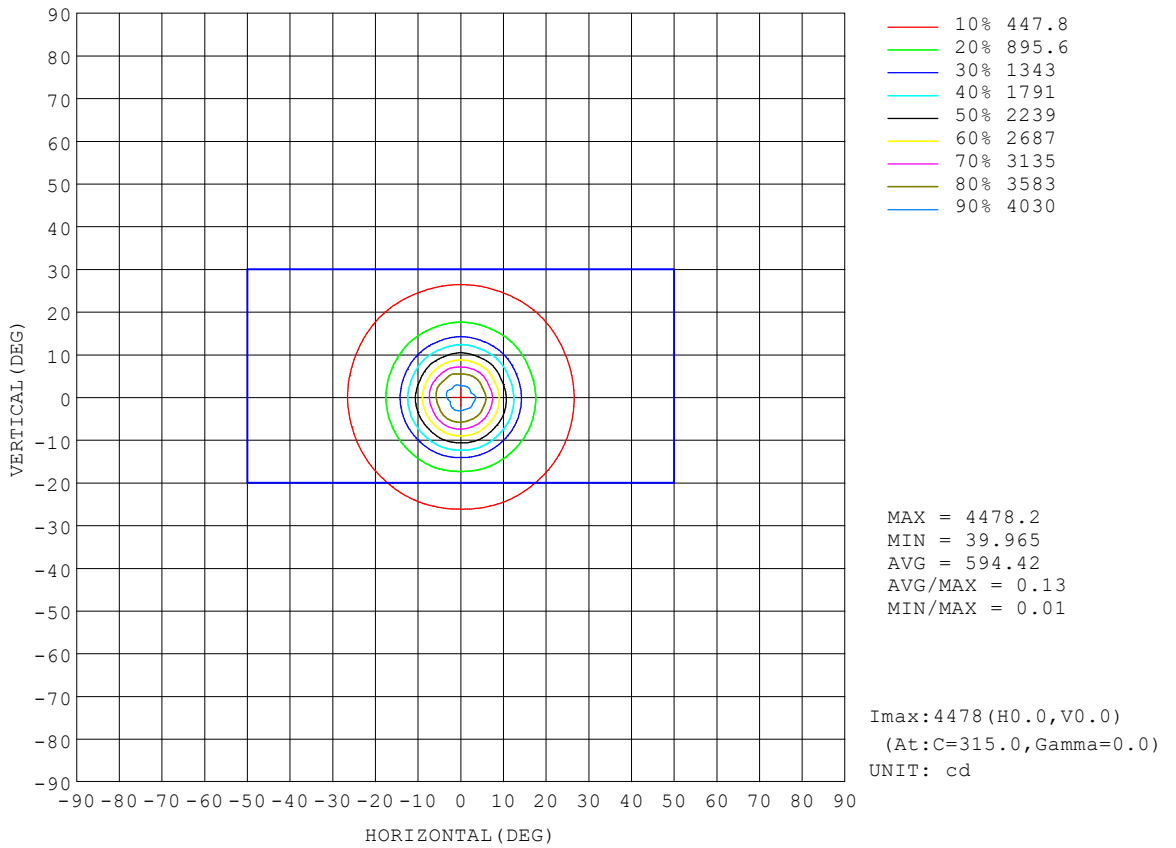
REFLECTANCE										
Ceiling	0.8	0.8	0.8	0.7	0.7	0.7	0.5	0.5	0.5	0
Walls	0.7	0.5	0.3	0.7	0.5	0.3	0.7	0.5	0.3	0
Working plane	0.2	0.2	0.2	0.2	0.2	0.2	0.2	0.2	0.2	0
ROOM INDEX	UTILIZATION FACTORS (PERCENT) $k(RI) \times RCR = 5$									
k = 0.60	85	78	74	84	78	74	83	77	74	70
0.80	92	86	82	92	86	82	90	85	81	77
1.00	97	91	87	96	90	87	94	90	86	82
1.25	101	96	92	100	95	91	98	94	90	86
1.50	104	99	95	103	98	95	100	96	94	89
2.00	107	103	99	106	101	98	103	99	97	91
2.50	109	105	102	107	104	101	104	101	99	92
3.00	111	107	104	109	106	103	105	103	101	94
4.00	113	110	108	111	108	106	107	105	103	96
5.00	114	112	110	112	110	108	108	106	105	97
ROOM INDEX	UF(total)									Direct
According to DIN EN 13032-2 2004			Suspended				SHRNOM = 1.25			

C Range: 0 - 360DEG  
 C Interval: 22.5DEG  
 Test Speed: HIGH  
 Temperature:25.3°C  
 Operators:DAMIN  
 Test Date:2023-11-10

γ Range: 0 - 180DEG  
 γ Interval: 5.0DEG  
 Test System:EVERFINE GO-2000B\_V1 SYSTEM V2.00.473  
 Humidity:65.0%  
 Test Distance:9.401m [K=1.0000]  
 Remarks:

**ISOCANDELA DIAGRAM**

Test:U:220.37V I:0.1004A P:12.142W PF:0.5485 Freq:50.00Hz Lamp Flux:1083.14x1 lm		
NAME: 射灯	TYPE:	WEIGHT:
SPEC.:	DIM.:	SERIAL No.:
MFR.: EVERFINE	SUR.: 35mm	Shielding Angle:



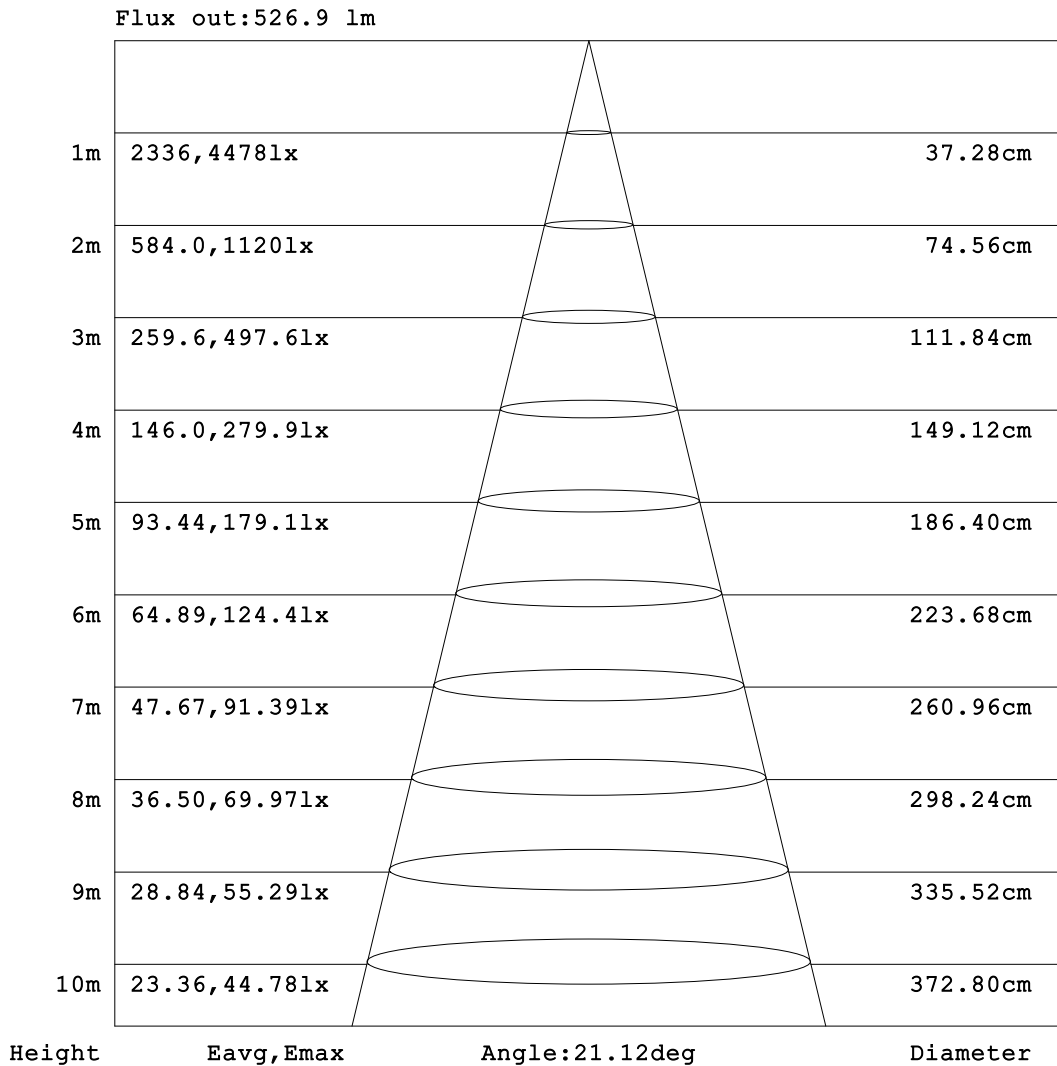
C Range: 0 - 360DEG  
 C Interval: 22.5DEG  
 Test Speed: HIGH  
 Temperature: 25.3°C  
 Operators: DAMIN  
 Test Date: 2023-11-10

γ Range: 0 - 180DEG  
 γ Interval: 5.0DEG  
 Test System: EVERFINE GO-2000B\_V1 SYSTEM V2.00.473  
 Humidity: 65.0%  
 Test Distance: 9.401m [K=1.0000]  
 Remarks:



**AAI Figure**

Test:U:220.37V I:0.1004A P:12.142W PF:0.5485 Freq:50.00Hz Lamp Flux:1083.14x1 lm		
NAME: 射灯	TYPE:	WEIGHT:
SPEC.:	DIM.:	SERIAL No.:
MFR.: EVERFINE	SUR.: 35mm	Shielding Angle:



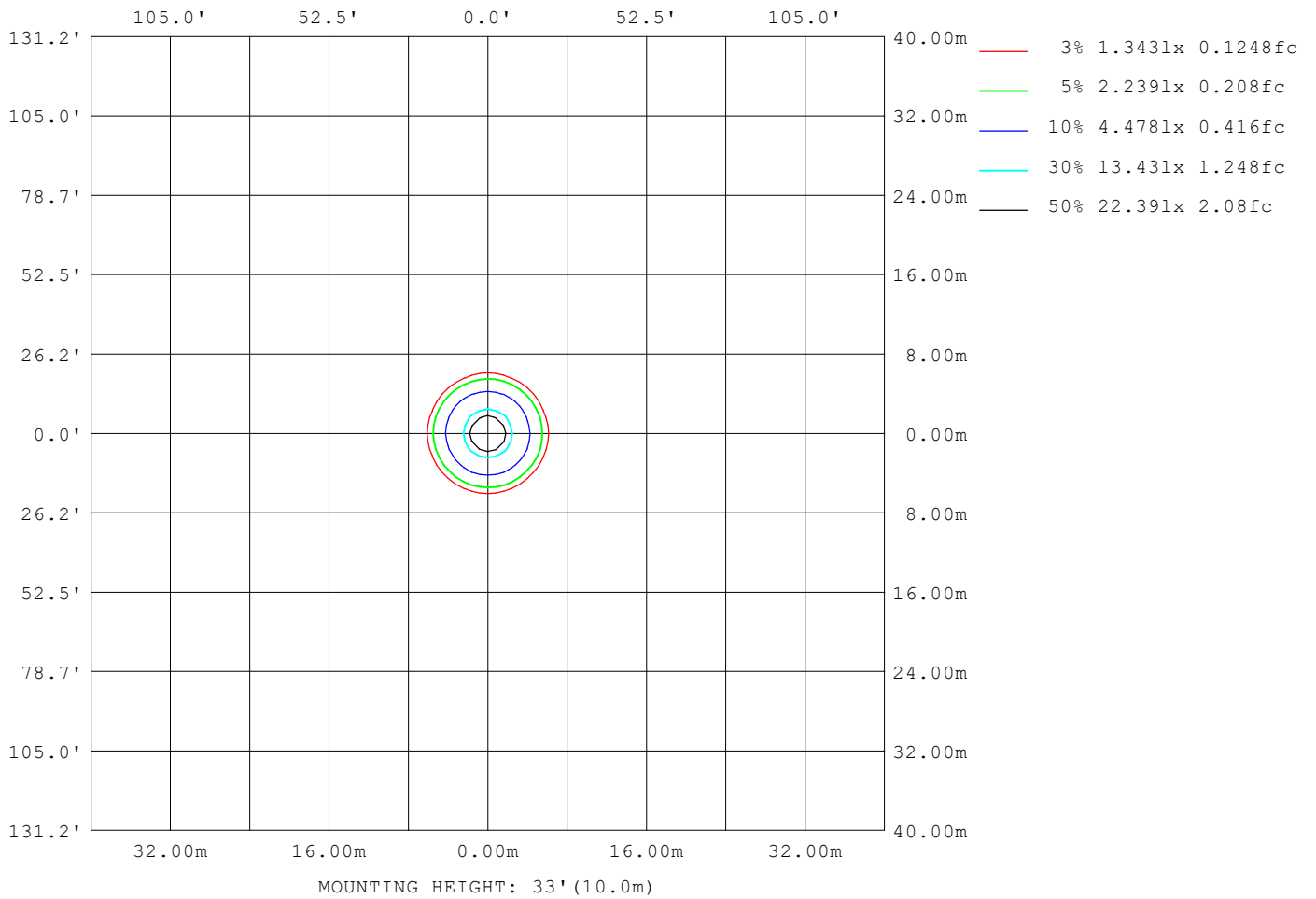
Note:The Curves indicate the illuminated area and the average illumination when the luminaire is at different distance.

C Range: 0 - 360DEG  
C Interval: 22.5DEG  
Test Speed: HIGH  
Temperature:25.3°C  
Operators:DAMIN  
Test Date:2023-11-10

γ Range: 0 - 180DEG  
γ Interval: 5.0DEG  
Test System:EVERFINE GO-2000B\_V1 SYSTEM V2.00.473  
Humidity:65.0%  
Test Distance:9.401m [K=1.0000]  
Remarks:

**ISOLUX DIAGRAM**

Test:U:220.37V I:0.1004A P:12.142W PF:0.5485 Freq:50.00Hz Lamp Flux:1083.14x1 lm		
NAME: 射灯	TYPE:	WEIGHT:
SPEC.:	DIM.:	SERIAL No.:
MFR.: EVERFINE	SUR.: 35mm	Shielding Angle:



C Range: 0 - 360DEG  
 C Interval: 22.5DEG  
 Test Speed: HIGH  
 Temperature:25.3°C  
 Operators:DAMIN  
 Test Date:2023-11-10

γ Range: 0 - 180DEG  
 γ Interval: 5.0DEG  
 Test System:EVERFINE GO-2000B\_V1 SYSTEM V2.00.473  
 Humidity:65.0%  
 Test Distance:9.401m [K=1.0000]  
 Remarks:

**LED Avg.L Report**

Test:U:220.37V I:0.1004A P:12.142W PF:0.5485 Freq:50.00Hz Lamp Flux:1083.14x1 lm		
NAME: 射灯	TYPE:	WEIGHT:
SPEC.:	DIM.:	SERIAL No.:
MFR.: EVERFINE	SUR.: 35mm	Shielding Angle:

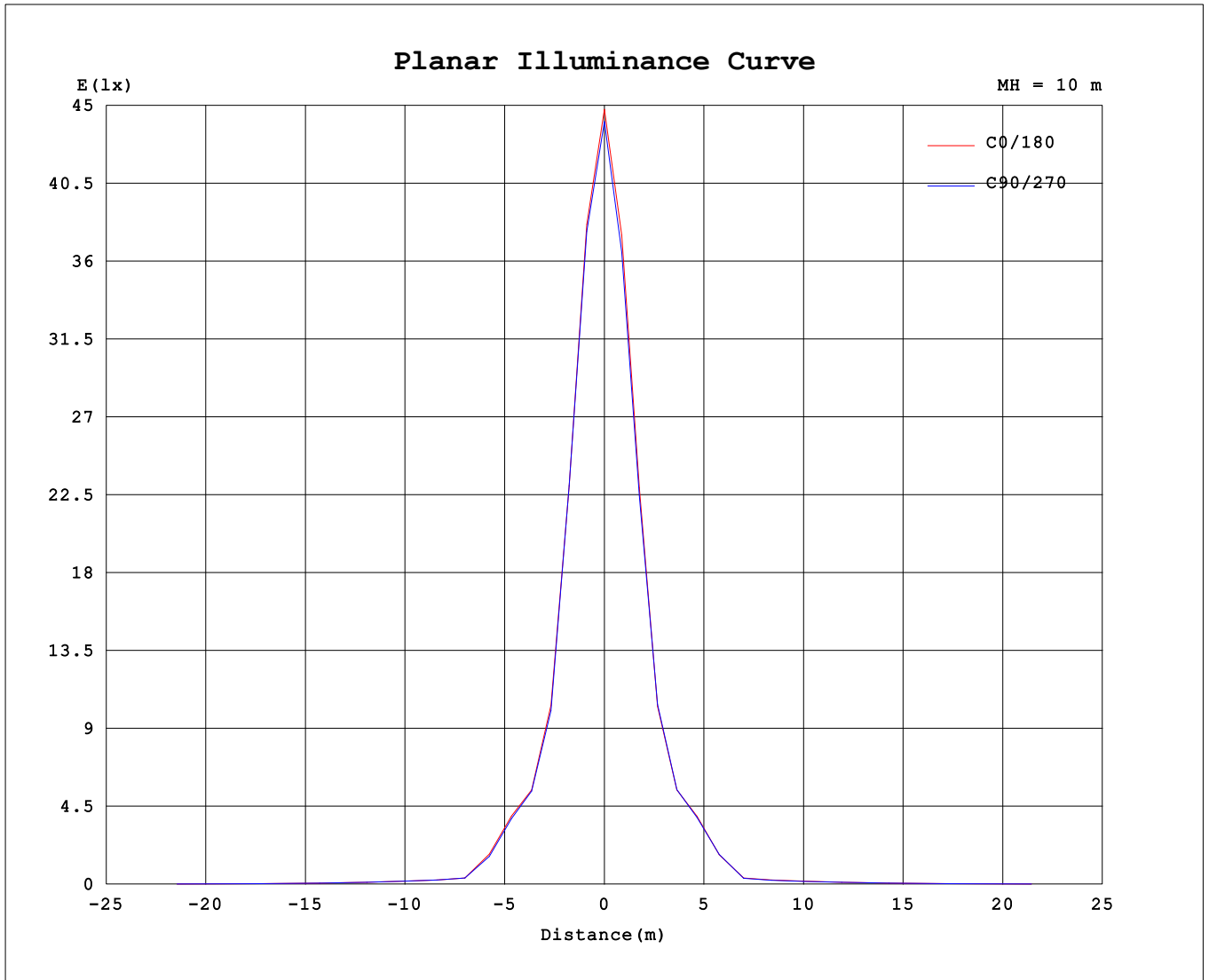
AvgL	cd/m2
L_0~180 (65) av	1169
L_0~180 (75) av	336
L_0~180 (85) av	38
L_90~270 (65) av	1100
L_90~270 (75) av	179
L_90~270 (85) av	19
L_45 (65) av	1171
L_45 (75) av	287
L_45 (85) av	17

Standard: GB/T 29293-2012

C Range: 0 - 360DEG  
 C Interval: 22.5DEG  
 Test Speed: HIGH  
 Temperature:25.3°C  
 Operators:DAMIN  
 Test Date:2023-11-10

γ Range: 0 - 180DEG  
 γ Interval: 5.0DEG  
 Test System:EVERFINE GO-2000B\_V1 SYSTEM V2.00.473  
 Humidity:65.0%  
 Test Distance:9.401m [K=1.0000]  
 Remarks:

**Planar Illuminance Curve**



C Range: 0 - 360DEG  
 C Interval: 22.5DEG  
 Test Speed: HIGH  
 Temperature: 25.3°C  
 Operators: DAMIN  
 Test Date: 2023-11-10

γ Range: 0 - 180DEG  
 γ Interval: 5.0DEG  
 Test System: EVERFINE GO-2000B\_V1 SYSTEM V2.00.473  
 Humidity: 65.0%  
 Test Distance: 9.401m [K=1.0000]  
 Remarks:

LUMINOUS DISTRIBUTION INTENSITY DATA

Test:U:220.37V I:0.1004A P:12.142W PF:0.5485 Freq:50.00Hz Lamp Flux:1083.14x1 lm		
NAME: 射灯	TYPE:	WEIGHT:
SPEC.:	DIM.:	SERIAL No.:
MFR.: EVERFINE	SUR.: 35mm	Shielding Angle:

Table--1

UNIT: cd

C (DEG) \ γ (DEG)	0	22.5	45	67.5	90	112.5	135	157.5	180	202.5	225	247.5	270	292.5	315	337.5			
0	4414	4414	4414	4414	4414	4414	4414	4414	4414	4414	4414	4414	4414	4414	4414	4414			
5	3802	3753	3816	3776	3822	3865	3860	3772	3740	3826	3712	3818	3700	3784	3809	3772			
10	2375	2427	2394	2450	2416	2441	2387	2418	2365	2295	2341	2305	2353	2325	2387	2354			
15	1133	1143	1127	1136	1115	1144	1126	1146	1125	1112	1126	1129	1156	1136	1156	1133			
20	648	651	645	657	651	662	651	648	649	646	654	655	661	657	655	651			
25	523	523	516	520	511	517	510	520	521	515	520	516	520	516	521	522			
30	265	267	253	260	250	259	253	260	260	253	261	256	266	261	270	264			
35	65.4	66.5	66.4	66.9	67.4	68.0	67.9	67.5	66.2	65.4	64.5	64.2	64.6	64.1	64.5	64.8			
40	55.8	56.5	56.5	56.8	56.5	56.3	56.3	56.1	55.1	54.4	54.4	54.1	53.5	52.9	53.3	54.4			
45	52.4	52.8	52.4	52.6	52.3	52.4	52.0	51.6	51.0	50.5	51.0	51.0	50.1	49.6	50.2	51.7			
50	48.2	48.0	48.7	48.7	48.2	48.3	48.0	48.0	47.0	45.9	45.9	46.2	45.8	45.9	45.9	47.3			
55	42.9	42.9	43.3	43.8	43.5	42.8	42.5	42.3	41.7	40.9	40.9	40.4	40.6	40.9	41.7	42.7			
60	36.6	36.5	36.2	36.9	37.1	37.6	36.7	36.0	35.8	35.5	35.8	35.5	35.4	35.3	35.8	36.3			
65	27.2	27.3	27.0	26.4	25.6	26.9	27.4	27.6	27.2	27.0	27.4	26.3	25.6	25.8	27.1	27.2			
70	12.8	13.2	12.3	10.4	9.28	10.4	12.6	13.8	13.6	13.3	12.7	10.2	9.50	9.87	12.1	12.7			
75	4.87	5.24	4.04	2.90	2.48	2.86	4.01	4.87	4.70	5.18	4.23	2.85	2.62	2.75	4.04	4.79			
80	1.27	1.41	0.90	0.53	0.49	0.50	0.81	1.09	1.21	1.41	0.97	0.65	0.55	0.62	0.89	1.21			
85	0.20	0.11	0.09	0.05	0.09	0.05	0.08	0.06	0.16	0.22	0.08	0.15	0.09	0.15	0.08	0.17			
90	0.06	0.07	0.06	0.05	0.06	0.06	0.06	0.06	0.09	0.09	0.08	0.08	0.08	0.08	0.08	0.09			
95	0.06	0.09	0.06	0.08	0.05	0.08	0.06	0.10	0.11	0.08	0.11	0.08	0.11	0.08	0.11	0.09			
100	0.07	0.13	0.07	0.13	0.06	0.13	0.06	0.12	0.16	0.10	0.15	0.09	0.16	0.08	0.15	0.10			
105	0.11	0.17	0.11	0.16	0.10	0.16	0.10	0.17	0.20	0.13	0.20	0.13	0.19	0.13	0.19	0.13			
110	0.17	0.22	0.15	0.22	0.16	0.21	0.16	0.21	0.29	0.22	0.28	0.20	0.27	0.21	0.27	0.21			
115	0.30	0.35	0.29	0.35	0.28	0.35	0.29	0.36	0.46	0.39	0.47	0.40	0.46	0.39	0.46	0.39			
120	0.50	0.57	0.50	0.56	0.51	0.57	0.51	0.57	0.75	0.67	0.73	0.67	0.72	0.68	0.73	0.68			
125	0.84	0.88	0.83	0.89	0.84	0.89	0.84	0.89	1.15	1.09	1.14	1.08	1.14	1.07	1.13	1.08			
130	1.35	1.41	1.35	1.42	1.37	1.42	1.38	1.43	1.85	1.79	1.82	1.78	1.82	1.77	1.81	1.78			
135	2.24	2.26	2.23	2.27	2.25	2.29	2.24	2.29	2.92	2.88	2.90	2.87	2.89	2.86	2.88	2.86			
140	3.43	3.45	3.43	3.46	3.44	3.46	3.44	3.47	4.24	4.18	4.21	4.17	4.19	4.16	4.19	4.18			
145	4.61	4.66	4.61	4.67	4.63	4.66	4.62	4.66	5.38	5.32	5.36	5.30	5.34	5.30	5.35	5.33			
150	5.49	5.56	5.50	5.58	5.52	5.56	5.50	5.54	6.11	6.02	6.07	6.02	6.07	6.03	6.10	6.05			
155	5.98	6.05	5.97	6.07	6.00	6.04	5.94	6.01	6.33	6.26	6.28	6.29	6.33	6.32	6.34	6.35			
160	6.11	6.09	6.08	6.12	6.14	6.07	6.01	5.97	6.21	6.17	6.13	6.25	6.25	6.30	6.23	6.32			
165	5.82	5.75	5.77	5.85	5.89	5.75	5.66	5.58	5.68	5.58	5.52	5.69	5.73	5.82	5.67	5.78			
170	5.14	5.13	5.13	5.15	5.16	5.03	5.00	4.94	4.91	4.83	4.70	4.79	4.82	4.92	4.89	5.03			
175	4.49	4.46	4.55	4.47	4.43	4.35	4.45	4.34	4.25	4.26	4.16	4.15	4.08	4.26	4.30	4.39			
180	4.17	4.14	4.16	4.08	4.08	4.07	4.18	4.12	4.17	4.08	4.12	4.04	4.04	4.06	4.13	4.12			

C Range: 0 - 360DEG  
 C Interval: 22.5DEG  
 Test Speed: HIGH  
 Temperature:25.3℃  
 Operators:DAMIN  
 Test Date:2023-11-10

γ Range: 0 - 180DEG  
 γ Interval: 5.0DEG  
 Test System:EVERFINE GO-2000B\_V1 SYSTEM V2.00.473  
 Humidity:65.0%  
 Test Distance:9.401m [K=1.0000]  
 Remarks: