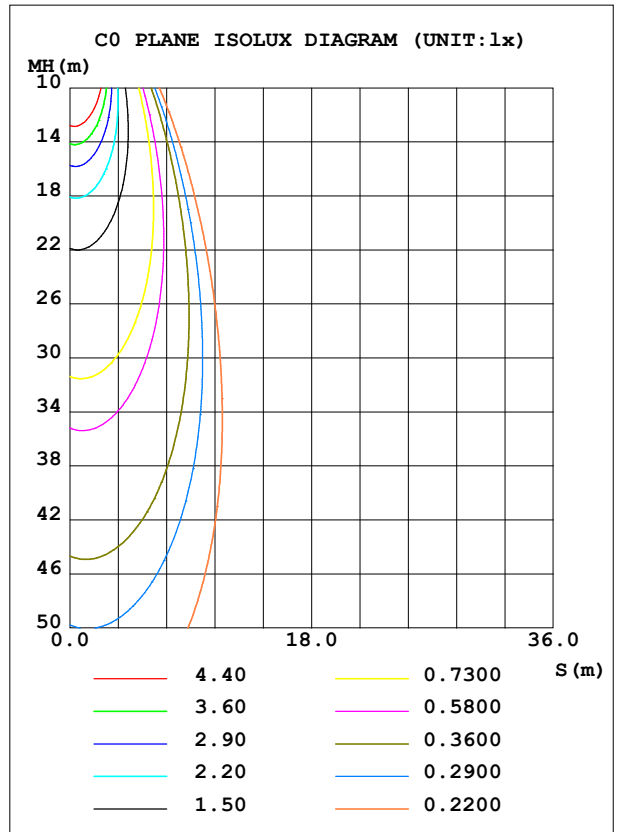
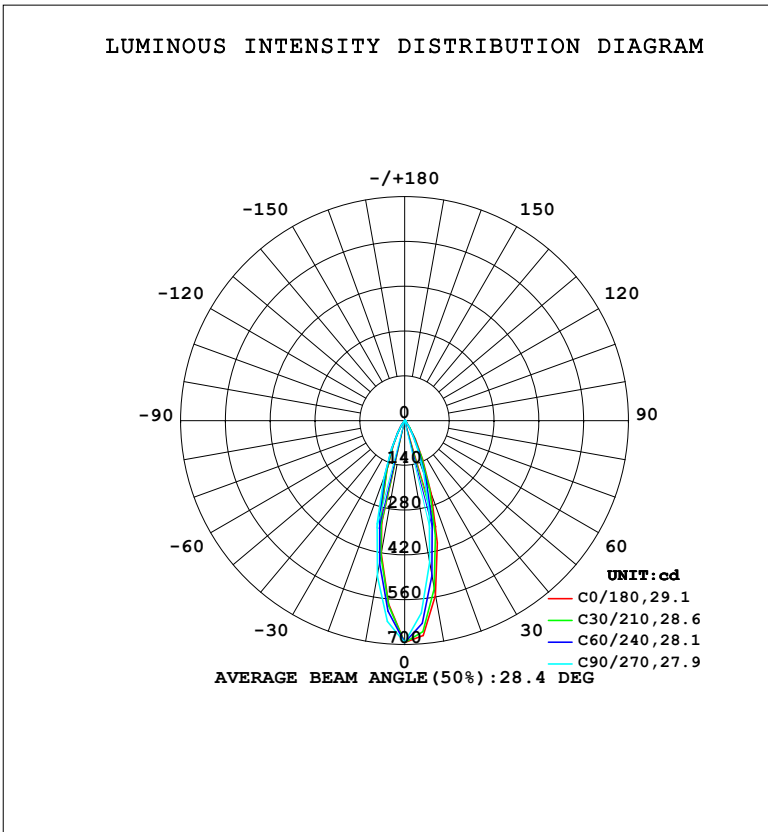


LUMINAIRE PHOTOMETRIC TEST REPORT

Test:U:220.37V I:0.0483A P:5.4993W PF:0.5162 Freq:50.00Hz Lamp Flux:213.297x1 lm		
NAME:	TYPE:	WEIGHT:
SPEC.:	DIM.:	SERIAL No.:
MFR.: EVERFINE	SUR.:	Shielding Angle:

DATA OF LAMP		PHOTOMETRIC DATA				Eff: 38.79 lm/W
MODEL	342AR	I _{max} (cd)	693.2	S/MH (C0/180)	0.42	
NOMINAL POWER (W)	5	LOR (%)	100.0	S/MH (C90/270)	0.49	
RATED VOLTAGE (V)	220	TOTAL FLUX (lm)	213.30	η UP, DN (C0-180)	0.0, 50.3	
NOMINAL FLUX (lm)	213.297	CIE CLASS	DIRECT	η UP, DN (C180-360)	0.0, 49.7	
LAMPS INSIDE	1	η up (%)	0.0	CIBSE SHR NOM	0.50	
TEST VOLTAGE (V)	219.5	η down (%)	100.0	CIBSE SHR MAX	0.50	



C Range: 0 - 360DEG
C Interval: 15.0DEG
Test Speed: HIGH
Temperature: 25.3°C
Operators: DAMIN
Test Date: 2024-01-22

γ Range: 0 - 90DEG
γ Interval: 5.0DEG
Test System: EVERFINE GO-2000B_V1 SYSTEM V2.00.473
Humidity: 65.0%
Test Distance: 9.401m [K=1.0000]
Remarks:

ZONAL FLUX DIAGRAM

ZONAL FLUX DIAGRAM:

γ	C0	C45	C90	C135	C180	C225	C270	C315	γ	Φ zone	Φ total	%lum,lamp
10	555.2	520.5	450.4	416.0	422.9	435.6	494.5	527.3	0- 10	54.94	54.94	25.8,25.8
20	244.6	218.9	176.0	153.3	161.0	168.1	192.5	217.8	10- 20	89.88	144.8	67.9,67.9
30	66.57	58.31	48.68	39.90	44.77	42.26	45.39	55.27	20- 30	50.01	194.8	91.3,91.3
40	11.09	10.83	8.819	7.267	8.036	4.962	5.691	6.893	30- 40	15.75	210.6	98.7,98.7
50	0.8525	0.8771	1.118	0.4851	0.5152	0.2667	0.3862	0.4021	40- 50	2.567	213.1	99.9,99.9
60	0	0	0.0000	0	0	0	0	0	50- 60	0.1523	213.3	100,100
70	0	0	0	0	0	0	0	0	60- 70	0.0000	213.3	100,100
80	0	0	0	0	0	0	0	0	70- 80	0	213.3	100,100
90	0	0	0	0	0	0	0	0	80- 90	0	213.3	100,100
100									90-100			
110									100-110			
120									110-120			
130									120-130			
140									130-140			
150									140-150			
160									150-160			
170									160-170			
180									170-180			
DEG	LUMINOUS INTENSITY:cd									UNIT:lm		

Conical surface Flux(90deg): 212.53 lm

%lum = 99.6%

%lamp = 99.6%

Conical surface Flux(130deg): 213.3 lm

%lum = 100.0%

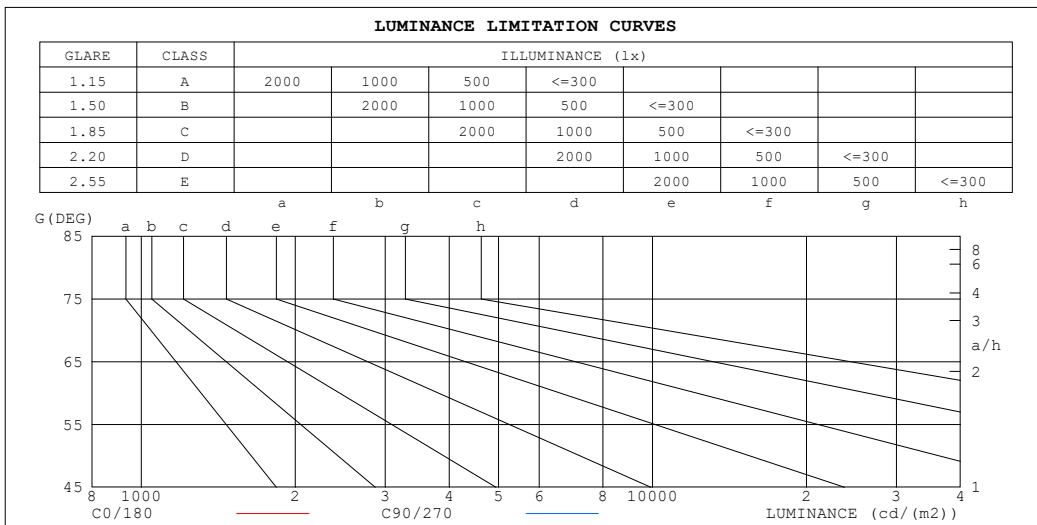
%lamp = 100.0%

C Range: 0 - 360DEG
 C Interval: 15.0DEG
 Test Speed: HIGH
 Temperature:25.3°C
 Operators:DAMIN
 Test Date:2024-01-22

γ Range: 0 - 90DEG
 γ Interval: 5.0DEG
 Test System:EVERFINE GO-2000B_V1 SYSTEM V2.00.473
 Humidity:65.0%
 Test Distance:9.401m [K=1.0000]
 Remarks:

LUMINANCE LIMITATION CURVES

Test:U:220.37V I:0.0483A P:5.4993W PF:0.5162 Freq:50.00Hz Lamp Flux:213.297x1 lm		
NAME:	TYPE:	WEIGHT:
SPEC.:	DIM.:	SERIAL No.:
MFR.: EVERFINE	SUR.:	Shielding Angle:



LUMINANCE cd/ (m2)		
G (DEG)	C0/180	C90/270
85	0	0
80	0	0
75	0	0
70	0	0
65	0	0
60	0	0
55	2	3
50	14	17
45	44	48

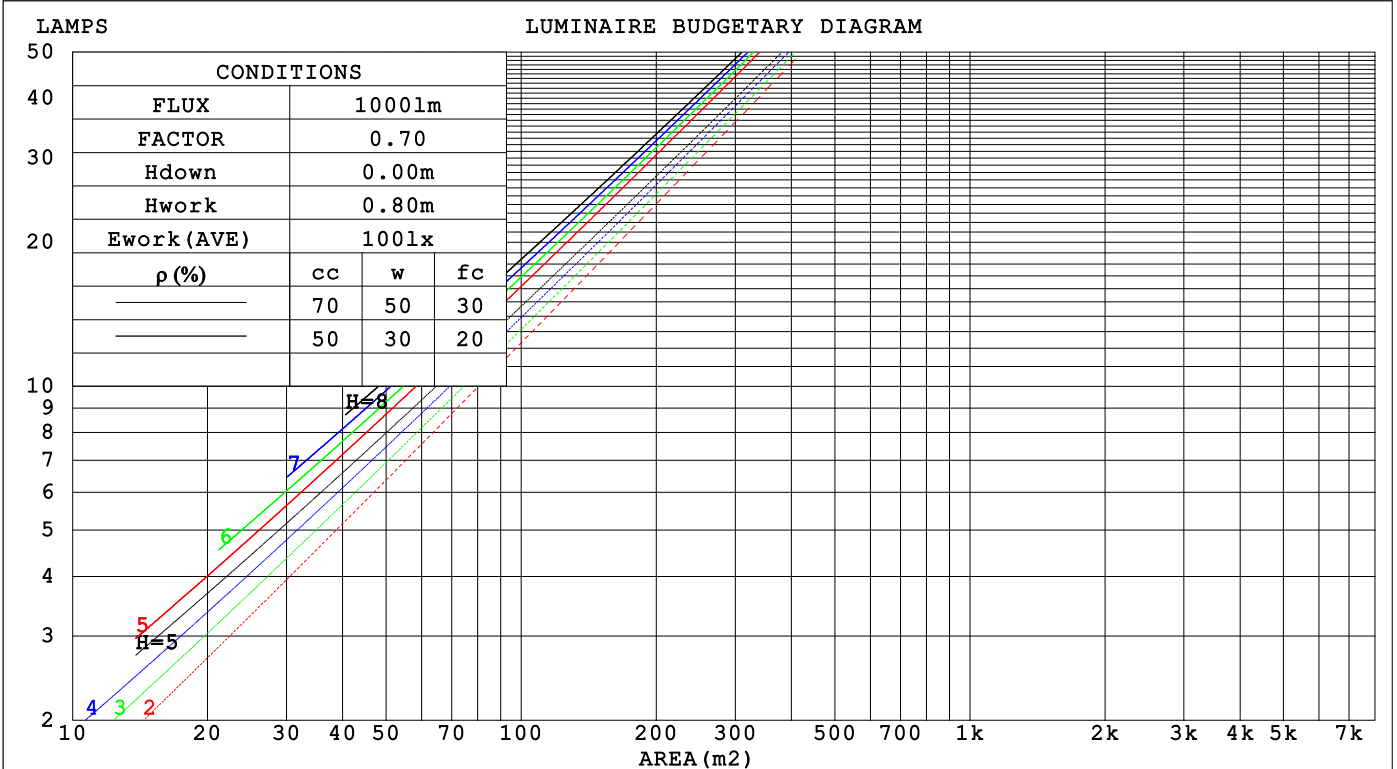
C Range: 0 - 360DEG
 C Interval: 15.0DEG
 Test Speed: HIGH
 Temperature:25.3°C
 Operators:DAMIN
 Test Date:2024-01-22

γ Range: 0 - 90DEG
 γ Interval: 5.0DEG
 Test System:EVERFINE GO-2000B_V1 SYSTEM V2.00.473
 Humidity:65.0%
 Test Distance:9.401m [K=1.0000]
 Remarks:

CU AND LUMINAIRE BUDGETARY ESTIMATE DIAGRAM

Test:U:220.37V I:0.0483A P:5.4993W PF:0.5162 Freq:50.00Hz Lamp Flux:213.297x1 lm		
NAME:	TYPE:	WEIGHT:
SPEC.:	DIM.:	SERIAL No.:
MFR.: EVERFINE	SUR.:	Shielding Angle:

ρ_{cc}	80%			70%			50%			30%			10%			0
ρ_w	50%	30%	10%	50%	30%	10%	50%	30%	10%	50%	30%	10%	50%	30%	10%	0
ρ_{fc}	20%			20%			20%			20%			20%			0
RCR	RCR:Room Cavity Ratio Coefficients of Utilization(CU)															
0.0	1.19	1.19	1.19	1.16	1.16	1.16	1.11	1.11	1.11	1.06	1.06	1.06	1.02	1.02	1.02	1.00
1.0	1.12	1.10	1.08	1.10	1.08	1.07	1.06	1.05	1.04	1.03	1.01	1.00	.99	.98	.98	.96
2.0	1.07	1.03	1.01	1.05	1.02	.99	1.02	.99	.97	.99	.97	.95	.96	.95	.93	.92
3.0	1.01	.97	.94	.90	.96	.93	.97	.94	.92	.95	.93	.91	.93	.91	.89	.88
4.0	.97	.92	.89	.96	.92	.89	.94	.90	.87	.92	.89	.87	.90	.88	.86	.84
5.0	.92	.88	.85	.92	.87	.84	.90	.86	.83	.88	.85	.83	.87	.84	.82	.81
6.0	.89	.84	.81	.88	.84	.80	.87	.83	.80	.85	.82	.79	.84	.81	.79	.78
7.0	.85	.80	.77	.85	.80	.77	.83	.79	.77	.82	.79	.76	.81	.78	.76	.75
8.0	.82	.77	.74	.81	.77	.74	.80	.76	.74	.80	.76	.73	.79	.75	.73	.72
9.0	.79	.74	.71	.78	.74	.71	.78	.74	.71	.77	.73	.71	.76	.73	.71	.69
10.0	.76	.72	.69	.76	.71	.69	.75	.71	.68	.74	.71	.68	.74	.70	.68	.67



C Range: 0 - 360DEG
 C Interval: 15.0DEG
 Test Speed: HIGH
 Temperature:25.3°C
 Operators:DAMIN
 Test Date:2024-01-22

γ Range: 0 - 90DEG
 γ Interval: 5.0DEG
 Test System:EVERFINE GO-2000B_V1 SYSTEM V2.00.473
 Humidity:65.0%
 Test Distance:9.401m [K=1.0000]
 Remarks:

WEC AND CCEC

Test:U:220.37V I:0.0483A P:5.4993W PF:0.5162 Freq:50.00Hz								
Lamp Flux:213.297x1 lm								
NAME:			TYPE:			WEIGHT:		
SPEC.:			DIM.:			SERIAL No.:		
MFR.: EVERFINE			SUR.:			Shielding Angle:		

ρ_{CC}	80%			70%			50%			30%			10%			0
ρ_w	50%	30%	10%	50%	30%	10%	50%	30%	10%	50%	30%	10%	50%	30%	10%	0
ρ_{fc}	20%			20%			20%			20%			20%			0
RCR	RCR:Room Cavity Ratio						Wall Exitance Coefficients (WEC)									
0.0																
1.0	.147	.084	.026	.140	.080	.025	.128	.073	.023	.116	.067	.022	.106	.061	.020	
2.0	.138	.075	.023	.132	.073	.022	.122	.068	.021	.112	.063	.020	.103	.059	.018	
3.0	.129	.069	.021	.125	.067	.020	.116	.063	.019	.108	.059	.018	.101	.056	.017	
4.0	.122	.063	.019	.118	.062	.018	.111	.059	.018	.104	.056	.017	.098	.053	.016	
5.0	.116	.059	.017	.112	.058	.017	.106	.055	.016	.100	.053	.016	.095	.051	.015	
6.0	.110	.055	.016	.107	.054	.016	.102	.052	.015	.097	.050	.015	.092	.048	.014	
7.0	.105	.052	.015	.102	.051	.015	.098	.049	.014	.093	.048	.014	.089	.046	.014	
8.0	.100	.049	.014	.098	.048	.014	.094	.047	.013	.090	.046	.013	.086	.044	.013	
9.0	.096	.047	.013	.094	.046	.013	.091	.045	.013	.087	.044	.012	.084	.043	.012	
10.0	.092	.044	.012	.091	.044	.012	.087	.043	.012	.084	.042	.012	.081	.041	.012	

ρ_{CC}	80%			70%			50%			30%			10%			0
ρ_w	50%	30%	10%	50%	30%	10%	50%	30%	10%	50%	30%	10%	50%	30%	10%	0
ρ_{fc}	20%			20%			20%			20%			20%			0
RCR	RCR:Room Cavity Ratio						Ceiling Cavity Exitance Coefficients (CCEC)									
0.0	.190	.190	.190	.163	.163	.163	.111	.111	.111	.064	.064	.064	.020	.020	.020	
1.0	.169	.158	.147	.145	.135	.127	.099	.093	.088	.057	.054	.051	.018	.017	.016	
2.0	.152	.133	.117	.130	.114	.101	.089	.079	.070	.051	.046	.041	.016	.015	.013	
3.0	.137	.113	.094	.118	.098	.082	.081	.068	.057	.047	.040	.034	.015	.013	.011	
4.0	.126	.098	.077	.108	.085	.067	.074	.059	.047	.043	.035	.028	.014	.011	.009	
5.0	.116	.086	.064	.099	.074	.056	.068	.052	.039	.040	.031	.023	.013	.010	.008	
6.0	.107	.076	.054	.092	.066	.047	.064	.046	.033	.037	.027	.020	.012	.009	.007	
7.0	.100	.068	.046	.086	.059	.040	.059	.041	.028	.035	.024	.017	.011	.008	.006	
8.0	.094	.062	.040	.081	.053	.035	.056	.038	.024	.033	.022	.015	.011	.007	.005	
9.0	.088	.056	.034	.076	.049	.030	.053	.034	.021	.031	.020	.013	.010	.007	.004	
10.0	.084	.052	.030	.072	.045	.026	.050	.031	.019	.029	.019	.011	.009	.006	.004	

C Range: 0 - 360DEG
 C Interval: 15.0DEG
 Test Speed: HIGH
 Temperature:25.3°C
 Operators:DAMIN
 Test Date:2024-01-22

γ Range: 0 - 90DEG
 γ Interval: 5.0DEG
 Test System:EVERFINE GO-2000B_V1 SYSTEM V2.00.473
 Humidity:65.0%
 Test Distance:9.401m [K=1.0000]
 Remarks:

UGR(Unified Glare Rating) Table

Test:U:220.37V I:0.0483A P:5.4993W PF:0.5162 Freq:50.00Hz										
Lamp Flux:213.297x1 lm										
NAME:			TYPE:				WEIGHT:			
SPEC.:			DIM.:				SERIAL No.:			
MFR.: EVERFINE			SUR.:				Shielding Angle:			
ceiling/cavity	0.7	0.7	0.5	0.5	0.3	0.7	0.7	0.5	0.5	0.3
walls	0.5	0.3	0.5	0.3	0.3	0.5	0.3	0.5	0.3	0.3
working plane	0.2	0.2	0.2	0.2	0.2	0.2	0.2	0.2	0.2	0.2
Room dimensions	Viewed crosswise					Viewed endwise				
x = 2H y = 2H	1.3	2.0	1.5	2.1	2.3	-0.1	0.6	0.1	0.8	0.9
3H	1.1	1.8	1.3	2.0	2.2	-0.2	0.4	-0.0	0.6	0.8
4H	1.0	1.7	1.3	1.9	2.1	-0.3	0.3	-0.1	0.5	0.7
6H	0.9	1.5	1.2	1.8	2.0	-0.4	0.2	-0.1	0.4	0.7
8H	0.9	1.5	1.2	1.7	2.0	-0.5	0.1	-0.2	0.4	0.6
12H	0.8	1.4	1.2	1.7	1.9	-0.5	0.1	-0.2	0.3	0.6
4H 2H	1.0	1.7	1.3	1.9	2.1	-0.3	0.3	-0.1	0.5	0.7
3H	0.8	1.4	1.2	1.7	1.9	-0.5	0.1	-0.2	0.3	0.6
4H	0.8	1.3	1.1	1.6	1.9	-0.6	-0.1	-0.3	0.2	0.5
6H	0.7	1.1	1.0	1.4	1.8	-0.7	-0.2	-0.3	0.1	0.4
8H	0.6	1.0	1.0	1.4	1.7	-0.8	-0.3	-0.4	0.0	0.4
12H	0.5	0.9	0.9	1.3	1.7	-0.8	-0.4	-0.4	-0.1	0.3
8H 4H	0.6	1.0	1.0	1.4	1.7	-0.8	-0.3	-0.4	0.0	0.4
6H	0.5	0.8	0.9	1.2	1.6	-0.9	-0.5	-0.4	-0.1	0.3
8H	0.4	0.7	0.9	1.2	1.6	-0.9	-0.6	-0.5	-0.2	0.2
12H	0.4	0.6	0.8	1.1	1.5	-1.0	-0.7	-0.5	-0.3	0.2
12H 4H	0.5	0.9	0.9	1.3	1.7	-0.8	-0.4	-0.4	-0.1	0.3
6H	0.4	0.7	0.9	1.2	1.6	-0.9	-0.6	-0.5	-0.2	0.2
8H	0.4	0.6	0.8	1.1	1.5	-1.0	-0.7	-0.5	-0.3	0.2
Variations with the observer position at spacings(CIE Pub.117):										
S = 1.0H	+ 3.6 / - 1.5					+ 3.1 / -82.7				
1.5H	+ 6.2 / -71.6					+ 5.6 / -70.3				
2.0H	+10.1 / - 1.5					+ 9.1 / - 1.5				

CIE Pub.117, 213.3 lm Total Lamp Luminous Flux Correct (8log(F/F0) = -5.4)
 Area: 0.1 m2

C Range: 0 - 360DEG
 C Interval: 15.0DEG
 Test Speed: HIGH
 Temperature:25.3°C
 Operators:DAMIN
 Test Date:2024-01-22

γ Range: 0 - 90DEG
 γ Interval: 5.0DEG
 Test System:EVERFINE GO-2000B_V1 SYSTEM V2.00.473
 Humidity:65.0%
 Test Distance:9.401m [K=1.0000]
 Remarks:

UTILIZATION FACTORS TABLE

Test:U:220.37V I:0.0483A P:5.4993W PF:0.5162 Freq:50.00Hz Lamp Flux:213.297x1 lm		
NAME:	TYPE:	WEIGHT:
SPEC.:	DIM.:	SERIAL No.:
MFR.: EVERFINE	SUR.:	Shielding Angle:

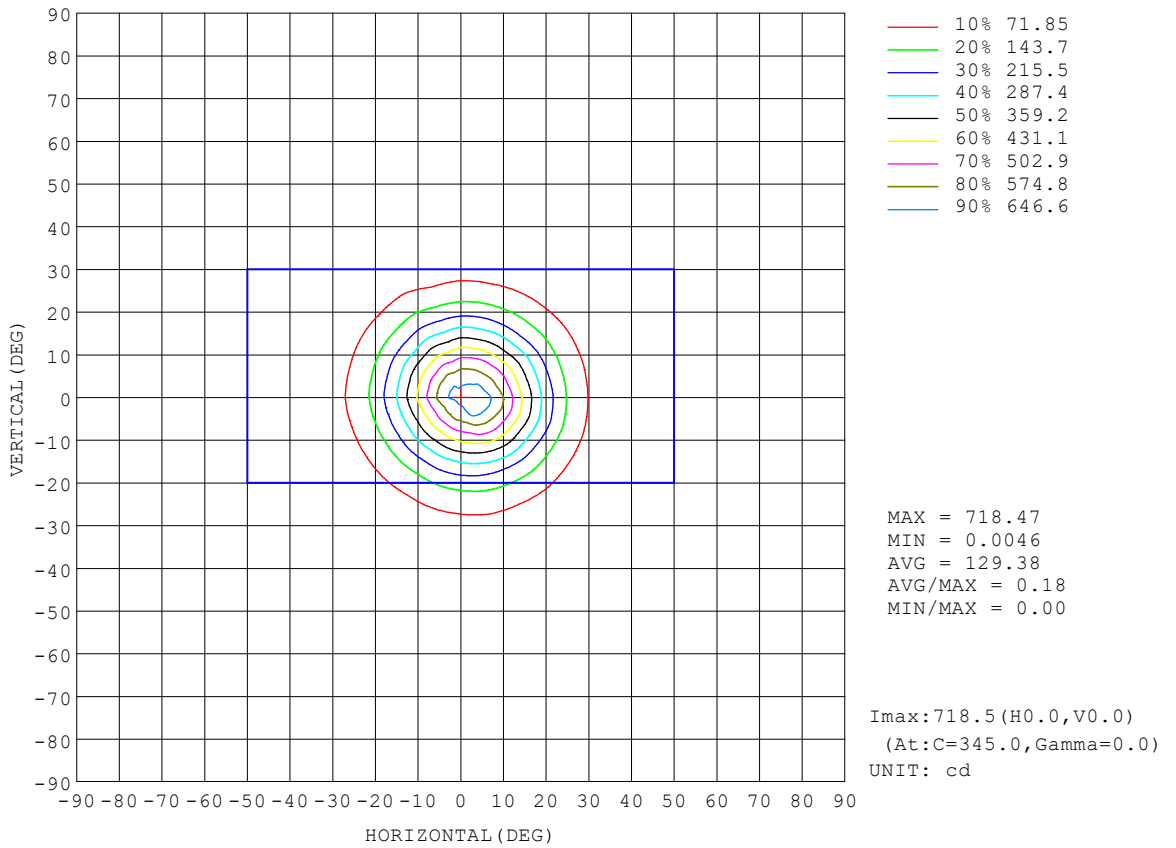
REFLECTANCE										
Ceiling	0.8	0.8	0.8	0.7	0.7	0.7	0.5	0.5	0.5	0
Walls	0.7	0.5	0.3	0.7	0.5	0.3	0.7	0.5	0.3	0
Working plane	0.2	0.2	0.2	0.2	0.2	0.2	0.2	0.2	0.2	0
ROOM INDEX	UTILIZATION FACTORS (PERCENT) $k(RI) \times RCR = 5$									
k = 0.60	91	85	82	90	85	82	90	85	81	78
0.80	98	93	89	97	92	89	96	92	89	85
1.00	102	97	93	101	96	93	99	96	93	89
1.25	105	100	97	104	100	97	102	99	96	92
1.50	108	103	100	106	103	100	104	101	99	95
2.00	110	106	103	108	105	102	106	103	101	96
2.50	111	108	105	110	107	104	107	104	102	97
3.00	113	110	107	111	108	106	108	106	104	98
4.00	115	112	110	112	110	109	109	107	106	99
5.00	116	114	112	114	112	110	110	108	107	100
ROOM INDEX	UF(total)									Direct
According to DIN EN 13032-2 2004			Suspended				SHRNOM = 1.25			

C Range: 0 - 360DEG
 C Interval: 15.0DEG
 Test Speed: HIGH
 Temperature:25.3°C
 Operators:DAMIN
 Test Date:2024-01-22

γ Range: 0 - 90DEG
 γ Interval: 5.0DEG
 Test System:EVERFINE GO-2000B_V1 SYSTEM V2.00.473
 Humidity:65.0%
 Test Distance:9.401m [K=1.0000]
 Remarks:

ISOCANDELA DIAGRAM

Test:U:220.37V I:0.0483A P:5.4993W PF:0.5162 Freq:50.00Hz Lamp Flux:213.297x1 lm		
NAME:	TYPE:	WEIGHT:
SPEC.:	DIM.:	SERIAL No.:
MFR.: EVERFINE	SUR.:	Shielding Angle:

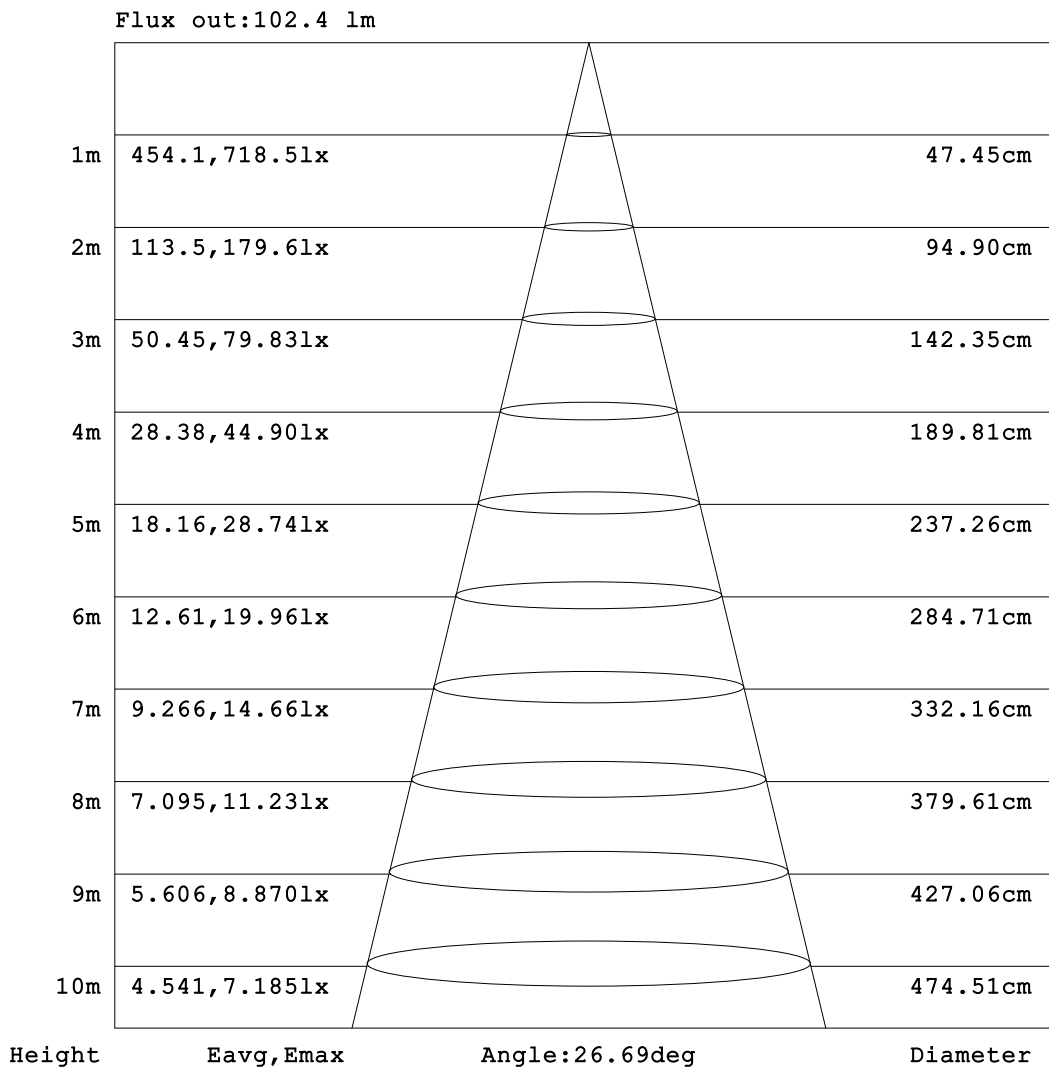


C Range: 0 - 360DEG
 C Interval: 15.0DEG
 Test Speed: HIGH
 Temperature: 25.3°C
 Operators: DAMIN
 Test Date: 2024-01-22

γ Range: 0 - 90DEG
 γ Interval: 5.0DEG
 Test System: EVERFINE GO-2000B_V1 SYSTEM V2.00.473
 Humidity: 65.0%
 Test Distance: 9.401m [K=1.0000]
 Remarks:

AAI Figure

Test:U:220.37V I:0.0483A P:5.4993W PF:0.5162 Freq:50.00Hz Lamp Flux:213.297x1 lm		
NAME:	TYPE:	WEIGHT:
SPEC.:	DIM.:	SERIAL No.:
MFR.: EVERFINE	SUR.:	Shielding Angle:



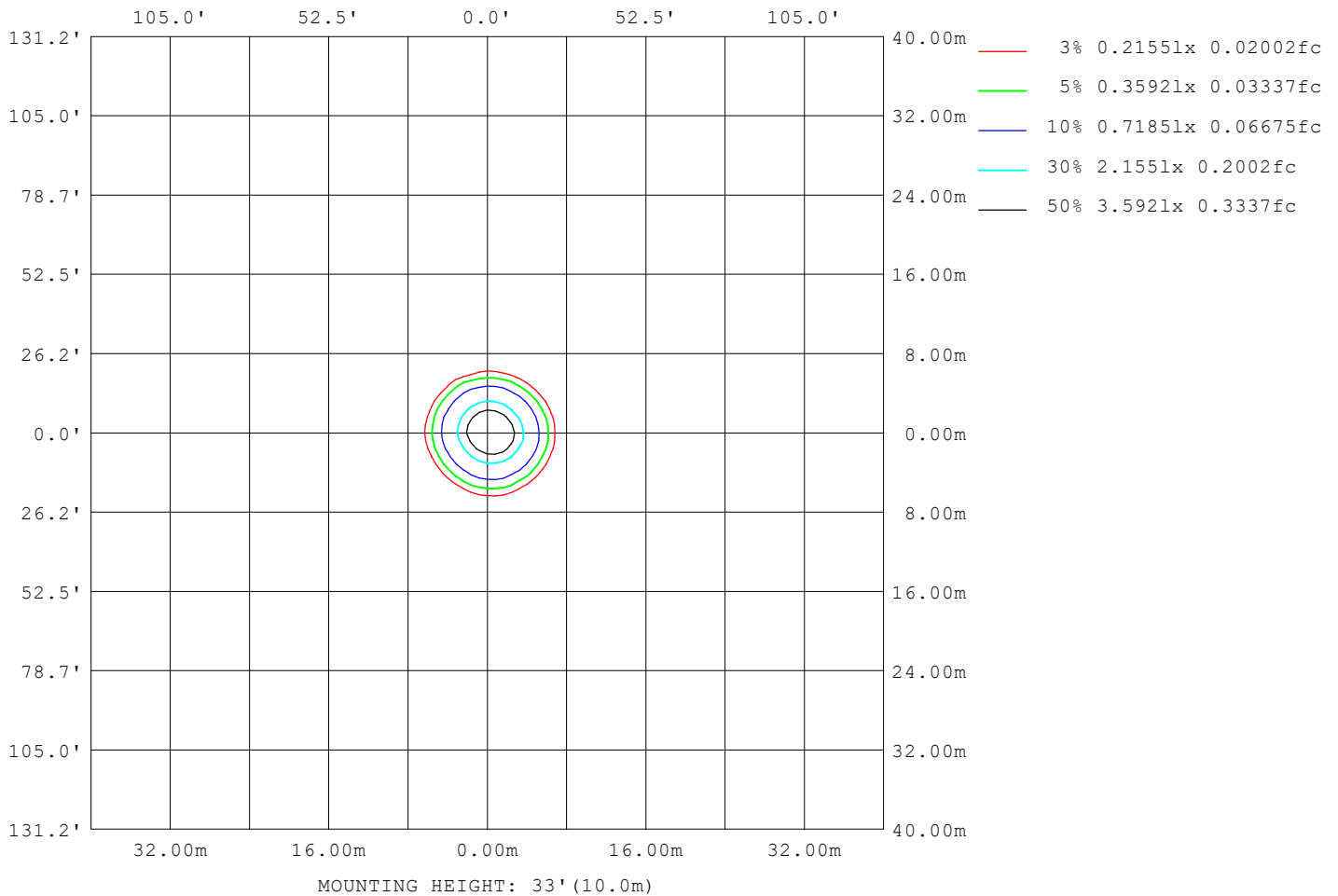
Note: The Curves indicate the illuminated area and the average illumination when the luminaire is at different distance.

C Range: 0 - 360DEG
 C Interval: 15.0DEG
 Test Speed: HIGH
 Temperature: 25.3°C
 Operators: DAMIN
 Test Date: 2024-01-22

γ Range: 0 - 90DEG
 γ Interval: 5.0DEG
 Test System: EVERFINE GO-2000B_V1 SYSTEM V2.00.473
 Humidity: 65.0%
 Test Distance: 9.401m [K=1.0000]
 Remarks:

ISOLUX DIAGRAM

Test:U:220.37V I:0.0483A P:5.4993W PF:0.5162 Freq:50.00Hz Lamp Flux:213.297x1 lm		
NAME:	TYPE:	WEIGHT:
SPEC.:	DIM.:	SERIAL No.:
MFR.: EVERFINE	SUR.:	Shielding Angle:



C Range: 0 - 360DEG
 C Interval: 15.0DEG
 Test Speed: HIGH
 Temperature:25.3°C
 Operators:DAMIN
 Test Date:2024-01-22

γ Range: 0 - 90DEG
 γ Interval: 5.0DEG
 Test System:EVERFINE GO-2000B_V1 SYSTEM V2.00.473
 Humidity:65.0%
 Test Distance:9.401m [K=1.0000]
 Remarks:

LED Avg.L Report

Test:U:220.37V I:0.0483A P:5.4993W PF:0.5162 Freq:50.00Hz Lamp Flux:213.297x1 lm		
NAME:	TYPE:	WEIGHT:
SPEC.:	DIM.:	SERIAL No.:
MFR.: EVERFINE	SUR.:	Shielding Angle:

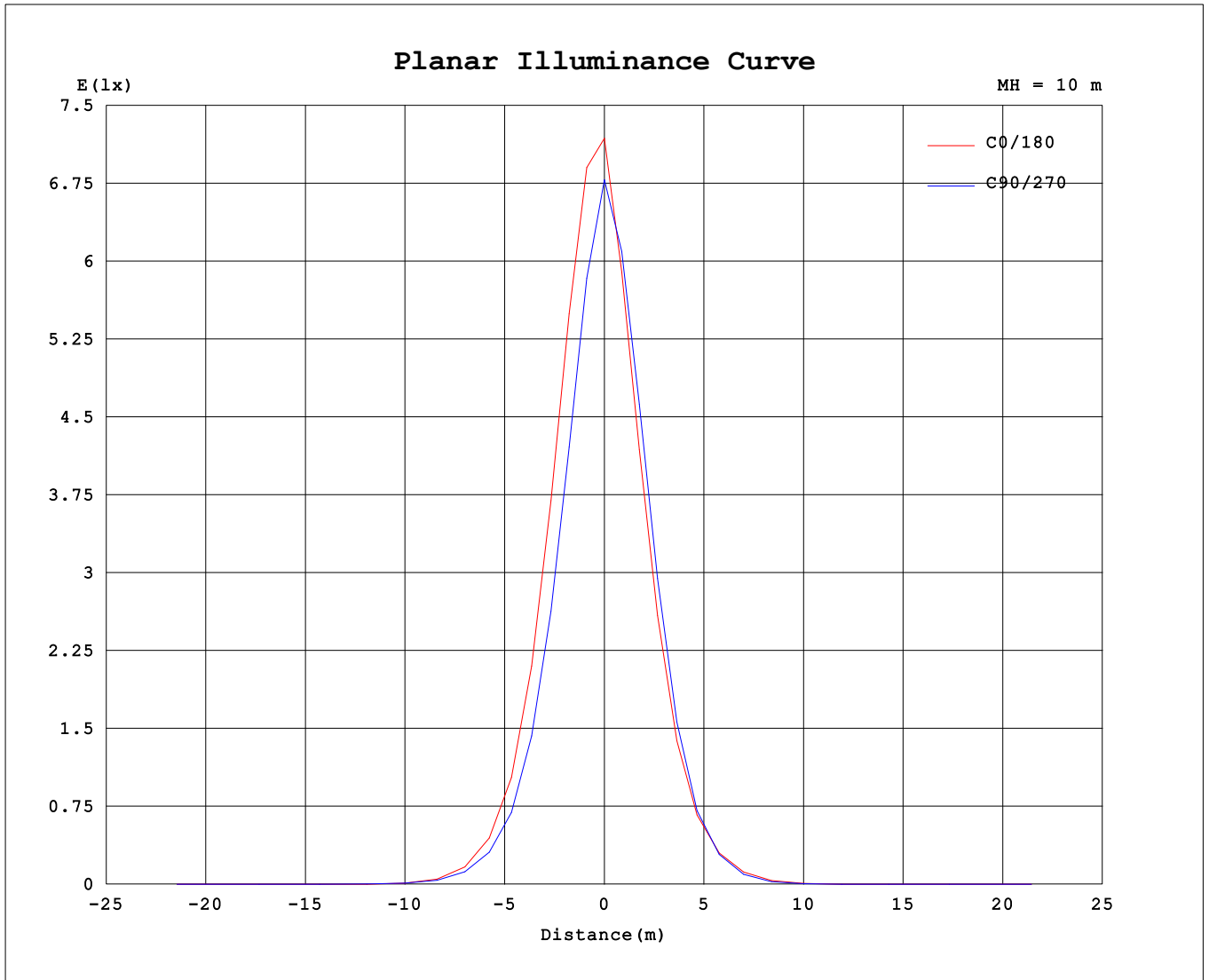
AvgL	cd/m2
L_0~180 (65) av	0
L_0~180 (75) av	0
L_0~180 (85) av	0
L_90~270 (65) av	0
L_90~270 (75) av	0
L_90~270 (85) av	0
L_45 (65) av	0
L_45 (75) av	0
L_45 (85) av	0

Standard: GB/T 29293-2012

C Range: 0 - 360DEG
 C Interval: 15.0DEG
 Test Speed: HIGH
 Temperature:25.3°C
 Operators:DAMIN
 Test Date:2024-01-22

γ Range: 0 - 90DEG
 γ Interval: 5.0DEG
 Test System:EVERFINE GO-2000B_V1 SYSTEM V2.00.473
 Humidity:65.0%
 Test Distance:9.401m [K=1.0000]
 Remarks:

Planar Illuminance Curve



C Range: 0 - 360DEG
 C Interval: 15.0DEG
 Test Speed: HIGH
 Temperature: 25.3°C
 Operators: DAMIN
 Test Date: 2024-01-22

γ Range: 0 - 90DEG
 γ Interval: 5.0DEG
 Test System: EVERFINE GO-2000B_V1 SYSTEM V2.00.473
 Humidity: 65.0%
 Test Distance: 9.401m [K=1.0000]
 Remarks:

LUMINOUS DISTRIBUTION INTENSITY DATA

Test:U:220.37V I:0.0483A P:5.4993W PF:0.5162 Freq:50.00Hz Lamp Flux:213.297x1 lm		
NAME:	TYPE:	WEIGHT:
SPEC.:	DIM.:	SERIAL No.:
MFR.: EVERFINE	SUR.:	Shielding Angle:

Table--1

UNIT: cd

C (DEG) \ γ (DEG)	0	15	30	45	60	75	90	105	120	135	150	165	180	195	210	225	240	255	270
0	693	693	693	693	693	693	693	693	693	693	693	693	693	693	693	693	693	693	693
5	674	675	662	655	636	620	603	594	582	579	573	578	576	574	581	584	598	613	630
10	555	558	534	521	493	473	450	434	418	416	412	418	423	422	431	436	455	470	495
15	396	399	374	364	333	319	298	284	268	268	266	271	277	275	284	286	303	310	334
20	245	248	228	219	197	191	176	165	154	153	153	156	161	160	166	168	179	182	193
25	134	135	124	117	105	105	95.3	88.0	80.8	80.3	80.7	83.1	86.5	85.5	87.7	88.4	95.0	88.9	97.4
30	66.6	67.4	61.5	58.3	52.5	54.0	48.7	44.6	40.4	39.9	40.4	42.6	44.8	43.3	43.1	42.3	45.6	41.1	45.4
35	29.4	30.2	28.0	26.3	23.9	25.5	22.8	20.8	18.5	17.6	18.2	20.5	21.1	19.5	18.9	17.4	17.7	16.5	18.1
40	11.1	11.2	10.9	10.8	9.87	9.67	8.82	8.47	7.58	7.27	7.73	8.89	8.04	7.00	6.06	4.96	4.64	5.24	5.69
45	2.99	3.04	3.00	3.39	3.52	3.58	3.44	3.00	2.53	2.37	2.70	3.27	2.59	2.05	1.50	1.23	1.30	1.76	1.80
50	0.85	0.76	0.78	0.88	1.15	1.17	1.12	0.80	0.57	0.49	0.61	0.66	0.52	0.44	0.24	0.27	0.26	0.39	0.39
55	0.10	0.05	0.09	0.06	0.17	0.16	0.17	0.04	0.06	0.00	0.04	0.00	0.00	0.01	0.00	0.00	0.00	0.00	0.00
60	0.00	0.00	0.00	0.00	0.00	0.00	0.00	0.00	0.00	0.00	0.00	0.00	0.00	0.00	0.00	0.00	0.00	0.00	0.00
65	0.00	0.00	0.00	0.00	0.00	0.00	0.00	0.00	0.00	0.00	0.00	0.00	0.00	0.00	0.00	0.00	0.00	0.00	0.00
70	0.00	0.00	0.00	0.00	0.00	0.00	0.00	0.00	0.00	0.00	0.00	0.00	0.00	0.00	0.00	0.00	0.00	0.00	0.00
75	0.00	0.00	0.00	0.00	0.00	0.00	0.00	0.00	0.00	0.00	0.00	0.00	0.00	0.00	0.00	0.00	0.00	0.00	0.00
80	0.00	0.00	0.00	0.00	0.00	0.00	0.00	0.00	0.00	0.00	0.00	0.00	0.00	0.00	0.00	0.00	0.00	0.00	0.00
85	0.00	0.00	0.00	0.00	0.00	0.00	0.00	0.00	0.00	0.00	0.00	0.00	0.00	0.00	0.00	0.00	0.00	0.00	0.00
90	0.00	0.00	0.00	0.00	0.00	0.00	0.00	0.00	0.00	0.00	0.00	0.00	0.00	0.00	0.00	0.00	0.00	0.00	0.00

C Range: 0 - 360DEG
 C Interval: 15.0DEG
 Test Speed: HIGH
 Temperature:25.3°C
 Operators:DAMIN
 Test Date:2024-01-22

γ Range: 0 - 90DEG
 γ Interval: 5.0DEG
 Test System:EVERFINE GO-2000B_V1 SYSTEM V2.00.473
 Humidity:65.0%
 Test Distance:9.401m [K=1.0000]
 Remarks:

LUMINOUS DISTRIBUTION INTENSITY DATA

Test:U:220.37V I:0.0483A P:5.4993W PF:0.5162 Freq:50.00Hz Lamp Flux:213.297x1 lm		
NAME:	TYPE:	WEIGHT:
SPEC.:	DIM.:	SERIAL No.:
MFR.: EVERFINE	SUR.:	Shielding Angle:

Table--2

UNIT: cd

C (DEG) \ γ (DEG)	285	300	315	330	345														
0	693	693	693	693	693														
5	638	649	656	669	669														
10	500	516	527	550	551														
15	336	353	364	390	392														
20	200	207	218	238	241														
25	98.9	107	115	127	132														
30	46.1	51.1	55.3	63.2	67.3														
35	18.8	21.8	23.3	27.9	31.4														
40	6.32	6.92	6.89	8.65	10.7														
45	1.78	1.73	1.72	2.03	2.47														
50	0.43	0.35	0.40	0.48	0.69														
55	0.01	0.00	0.01	0.00	0.06														
60	0.00	0.00	0.00	0.00	0.00														
65	0.00	0.00	0.00	0.00	0.00														
70	0.00	0.00	0.00	0.00	0.00														
75	0.00	0.00	0.00	0.00	0.00														
80	0.00	0.00	0.00	0.00	0.00														
85	0.00	0.00	0.00	0.00	0.00														
90	0.00	0.00	0.00	0.00	0.00														

C Range: 0 - 360DEG
 C Interval: 15.0DEG
 Test Speed: HIGH
 Temperature:25.3°C
 Operators:DAMIN
 Test Date:2024-01-22

γ Range: 0 - 90DEG
 γ Interval: 5.0DEG
 Test System:EVERFINE GO-2000B_V1 SYSTEM V2.00.473
 Humidity:65.0%
 Test Distance:9.401m [K=1.0000]
 Remarks: