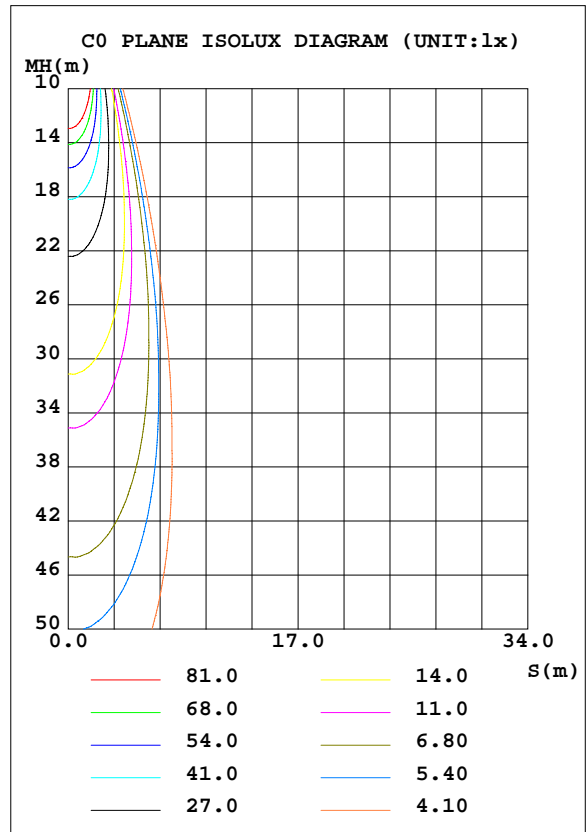
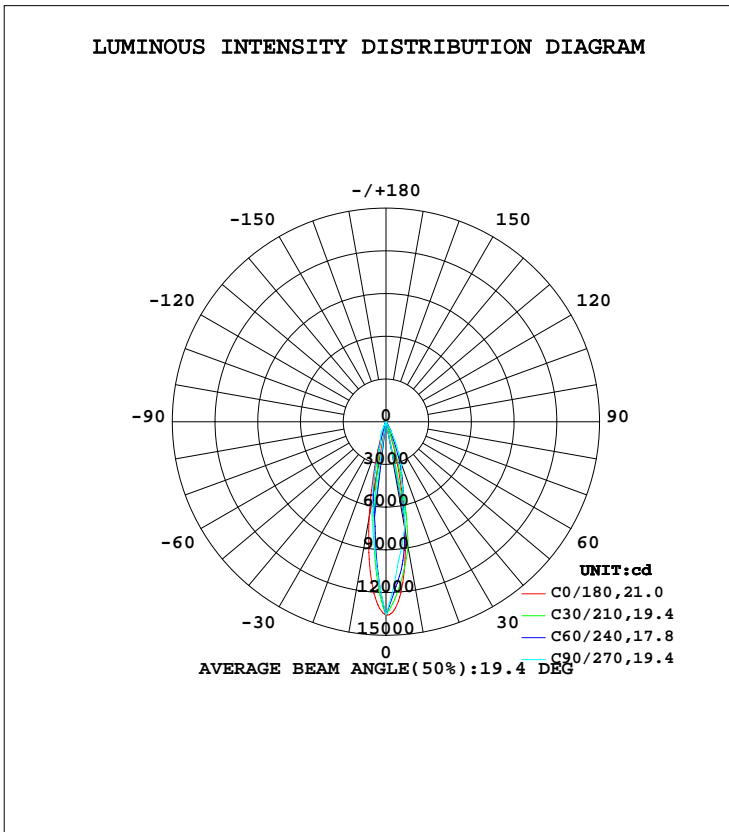


LUMINAIRE PHOTOMETRIC TEST REPORT

Test:U:48.06V I:0.4830A P:23.22W PF:1.000 Freq:60.00Hz Lamp Flux:2033.89x1 lm		
NAME: 轨道灯	TYPE:	WEIGHT:
SPEC.:2995K-Ra91	DIM.:	SERIAL No.:
MFR.:	SUR.:	Shielding Angle:

DATA OF LAMP		PHOTOMETRIC DATA Eff: 87.61 lm/W			
MODEL	D750-3000K—24W	Imax(cd)	13567	S/MH(C0/180)	0.34
NOMINAL POWER(W)	24	LOR(%)	100.0	S/MH(C90/270)	0.28
RATED VOLTAGE(V)	48	TOTAL FLUX(lm)	2033.9	η UP, DN(C0-180)	0.0,57.3
NOMINAL FLUX(lm)	2033.89	CIE CLASS	DIRECT	η UP, DN(C180-360)	0.0,42.7
LAMPS INSIDE	1	η up(%)	0.0	CIBSE SHR NOM	0.00
TEST VOLTAGE(V)	48	η down(%)	100.0	CIBSE SHR MAX	1.00



H(β) Range:-90 - 90DEG
H(β) Interval: 1.0DEG
Test Speed: HIGH
Temperature:25.3DEG
Operators:sunny
Test Date:2023-12-12

V(B) Range:-75 - 75DEG
V(B) Interval: 5.0DEG
Test System:EVERFINE GO-2000B_V1 SYSTEM V2.0.362
Humidity:65.0%
Test Distance:8.100m [K=1.0000]
Remarks: SDCM5.0

ZONAL FLUX DIAGRAM

ZONAL FLUX DIAGRAM:

γ	C0	C45	C90	C135	C180	C225	C270	C315	γ	Φ zone	Φ total	%lum,lamp
10	773.1	801.8	754.4	535.6	682.0	440.5	564.9	696.8	0- 10	849.6	849.6	41.8,41.8
20	88.37	194.7	305.6	74.22	62.65	32.71	114.6	82.11	10- 20	849.9	1699	83.6,83.6
30	15.05	18.72	10.18	12.75	7.120	7.654	5.853	11.06	20- 30	242.4	1942	95.5,95.5
40	6.326	4.506	5.755	4.371	3.994	3.594	3.794	3.855	30- 40	43.88	1986	97.6,97.6
50	2.520	2.627	2.837	2.527	2.319	2.112	2.120	2.208	40- 50	25.71	2012	98.9,98.9
60	1.104	1.321	1.423	1.231	1.128	0.8902	0.8299	0.9698	50- 60	15.47	2027	99.7,99.7
70	0.1059	0.3832	0.4743	0.3142	0.1493	0.0619	0.2766	0.1253	60- 70	6.139	2033	100,100
80	0	0	0	0	0	0	0	0	70- 80	0.7685	2034	100,100
90	0	0	0	0	0	0	0	0	80- 90	0.0001	2034	100,100
100									90-100			
110									100-110			
120									110-120			
130									120-130			
140									130-140			
150									140-150			
160									150-160			
170									160-170			
180									170-180			
DEG	LUMINOUS INTENSITY:×10cd									UNIT:lm		

Conical surface Flux(90deg): 2000.2 lm

%lum = 98.3%
 %lamp = 98.3%

Conical surface Flux(120deg): 2027 lm

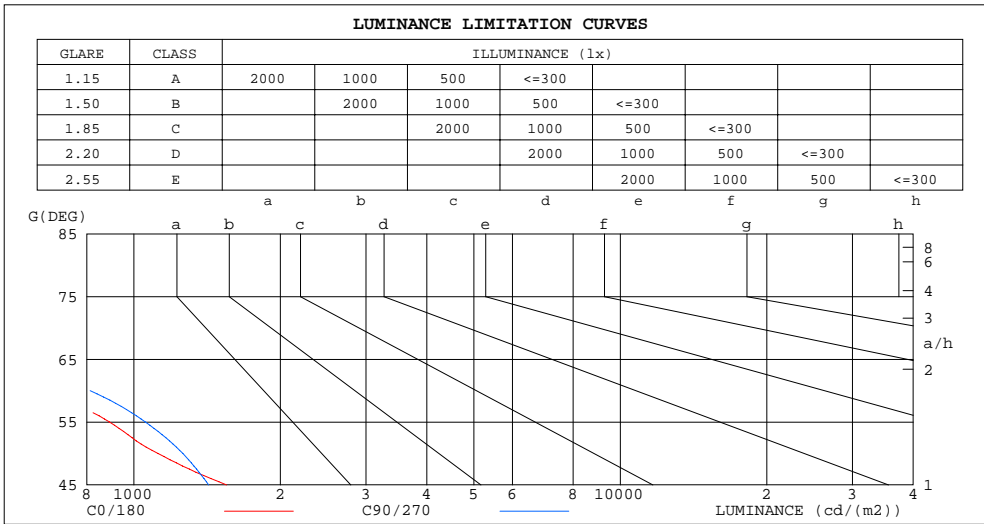
%lum = 99.7%
 %lamp = 99.7%

H(β) Range:-90 - 90DEG
 H(β) Interval: 1.0DEG
 Test Speed: HIGH
 Temperature:25.3DEG
 Operators:sunny
 Test Date:2023-12-12

V(B) Range:-75 - 75DEG
 V(B) Interval: 5.0DEG
 Test System:EVERFINE GO-2000B_V1 SYSTEM V2.0.362
 Humidity:65.0%
 Test Distance:8.100m [K=1.0000]
 Remarks: SDCM5.0

LUMINANCE LIMITATION CURVES

Test:U:48.06V I:0.4830A P:23.22W PF:1.000 Freq:60.00Hz Lamp Flux:2033.89x1 lm		
NAME: 轨道灯	TYPE:	WEIGHT:
SPEC.:2995K-Ra91	DIM.:	SERIAL No.:
MFR.:	SUR.:	Shielding Angle:



LUMINANCE cd/(m2)		
G(DEG)	C0/180	C90/270
85	0	0
80	0	0
75	0	0
70	88	396
65	361	639
60	631	813
55	891	1056
50	1120	1261
45	1550	1425

H(β) Range:-90 - 90DEG
H(β) Interval: 1.0DEG
Test Speed: HIGH
Temperature:25.3DEG
Operators:sunny
Test Date:2023-12-12

V(B) Range:-75 - 75DEG
V(B) Interval: 5.0DEG
Test System:EVERFINE GO-2000B_V1 SYSTEM V2.0.362
Humidity:65.0%
Test Distance:8.100m [K=1.0000]
Remarks: SDCM5.0

WEC AND CCEC

Test:U:48.06V I:0.4830A P:23.22W PF:1.000 Freq:60.00Hz Lamp Flux:2033.89x1 lm		
NAME: 轨道灯	TYPE:	WEIGHT:
SPEC.:2995K-Ra91	DIM.:	SERIAL No.:
MFR.:	SUR.:	Shielding Angle:

ρcc	80%			70%			50%			30%			10%			0
ρw	50%	30%	10%	50%	30%	10%	50%	30%	10%	50%	30%	10%	50%	30%	10%	0
ρfc	20%			20%			20%			20%			20%			0
RCR	RCR:Room Cavity Ratio						Wall Exitance Coefficients(WEC)									
0.0																
1.0	.133	.075	.024	.126	.072	.023	.114	.065	.021	.102	.059	.019	.092	.053	.017	
2.0	.123	.067	.021	.117	.065	.020	.107	.060	.018	.098	.055	.017	.089	.050	.016	
3.0	.114	.061	.018	.109	.059	.018	.101	.055	.017	.093	.051	.016	.086	.048	.015	
4.0	.106	.055	.016	.103	.054	.016	.096	.051	.015	.089	.048	.014	.083	.045	.014	
5.0	.100	.051	.015	.097	.050	.014	.091	.047	.014	.085	.045	.013	.080	.043	.013	
6.0	.094	.047	.014	.091	.046	.013	.086	.044	.013	.081	.042	.012	.077	.040	.012	
7.0	.089	.044	.013	.087	.043	.012	.082	.042	.012	.078	.040	.012	.074	.039	.011	
8.0	.085	.041	.012	.083	.041	.012	.079	.039	.011	.075	.038	.011	.072	.037	.011	
9.0	.081	.039	.011	.079	.039	.011	.076	.037	.011	.072	.036	.010	.069	.035	.010	
10.0	.077	.037	.010	.076	.037	.010	.073	.036	.010	.070	.035	.010	.067	.034	.010	

ρcc	80%			70%			50%			30%			10%			0
ρw	50%	30%	10%	50%	30%	10%	50%	30%	10%	50%	30%	10%	50%	30%	10%	0
ρfc	20%			20%			20%			20%			20%			0
RCR	RCR:Room Cavity Ratio						Ceiling Cavity Exitance Coefficients(CCEC)									
0.0	.190	.190	.190	.163	.163	.163	.111	.111	.111	.064	.064	.064	.020	.020	.020	
1.0	.168	.158	.148	.144	.135	.128	.098	.093	.088	.057	.054	.051	.018	.017	.017	
2.0	.150	.133	.118	.128	.114	.102	.088	.079	.071	.051	.046	.042	.016	.015	.014	
3.0	.134	.113	.096	.115	.098	.084	.079	.068	.059	.046	.040	.035	.015	.013	.011	
4.0	.122	.098	.080	.104	.085	.069	.072	.059	.049	.042	.034	.029	.013	.011	.009	
5.0	.111	.085	.067	.095	.074	.058	.066	.052	.041	.038	.030	.024	.012	.010	.008	
6.0	.102	.075	.056	.088	.065	.049	.060	.046	.035	.035	.027	.021	.011	.009	.007	
7.0	.094	.067	.048	.081	.058	.042	.056	.041	.030	.032	.024	.018	.010	.008	.006	
8.0	.087	.060	.042	.075	.052	.036	.052	.037	.026	.030	.022	.015	.010	.007	.005	
9.0	.082	.054	.036	.070	.047	.032	.049	.033	.022	.028	.020	.013	.009	.006	.004	
10.0	.077	.050	.032	.066	.043	.028	.046	.030	.020	.027	.018	.012	.009	.006	.004	

H(β) Range:-90 - 90DEG
H(β) Interval: 1.0DEG
Test Speed: HIGH
Temperature:25.3DEG
Operators:sunny
Test Date:2023-12-12

V(B) Range:-75 - 75DEG
V(B) Interval: 5.0DEG
Test System:EVERFINE GO-2000B_V1 SYSTEM V2.0.362
Humidity:65.0%
Test Distance:8.100m [K=1.0000]
Remarks: SDCM5.0

UGR(Unified Glare Rating) Table

Test:U:48.06V I:0.4830A P:23.22W PF:1.000 Freq:60.00Hz Lamp Flux:2033.89x1 lm										
NAME: 轨道灯				TYPE:			WEIGHT:			
SPEC.:2995K-Ra91				DIM.:			SERIAL No.:			
MFR.:				SUR.:			Shielding Angle:			
ceiling/cavity	0.7	0.7	0.5	0.5	0.3	0.7	0.7	0.5	0.5	0.3
walls	0.5	0.3	0.5	0.3	0.3	0.5	0.3	0.5	0.3	0.3
working plane	0.2	0.2	0.2	0.2	0.2	0.2	0.2	0.2	0.2	0.2
Room dimensions	Viewed crosswise					Viewed endwise				
x = 2H y = 2H	1.9	2.5	2.1	2.6	2.8	1.3	1.9	1.5	2.1	2.2
3H	1.9	2.5	2.1	2.7	2.9	1.6	2.2	1.9	2.4	2.6
4H	1.8	2.4	2.1	2.6	2.8	1.6	2.1	1.8	2.4	2.6
6H	1.8	2.3	2.0	2.5	2.7	1.5	2.0	1.8	2.3	2.5
8H	1.7	2.2	2.0	2.5	2.7	1.5	2.0	1.8	2.2	2.5
12H	1.7	2.2	2.0	2.4	2.7	1.4	1.9	1.7	2.2	2.4
4H 2H	2.0	2.5	2.2	2.7	2.9	1.4	2.0	1.7	2.2	2.4
3H	2.0	2.5	2.3	2.8	3.0	1.8	2.3	2.1	2.6	2.8
4H	1.9	2.4	2.3	2.7	3.0	1.8	2.2	2.1	2.5	2.8
6H	1.8	2.2	2.2	2.5	2.9	1.7	2.1	2.0	2.4	2.7
8H	1.8	2.1	2.1	2.5	2.8	1.6	2.0	2.0	2.3	2.7
12H	1.7	2.0	2.1	2.4	2.8	1.5	1.9	1.9	2.3	2.6
8H 4H	1.8	2.2	2.2	2.5	2.9	1.6	2.0	2.0	2.3	2.7
6H	1.7	2.0	2.1	2.4	2.8	1.5	1.8	1.9	2.2	2.6
8H	1.6	1.9	2.1	2.3	2.8	1.5	1.7	1.9	2.1	2.6
12H	1.6	1.8	2.0	2.2	2.7	1.4	1.6	1.9	2.1	2.5
12H 4H	1.7	2.1	2.1	2.5	2.8	1.6	1.9	2.0	2.3	2.7
6H	1.6	1.9	2.1	2.3	2.8	1.5	1.7	1.9	2.1	2.6
8H	1.6	1.8	2.0	2.2	2.7	1.4	1.6	1.9	2.1	2.5
Variations with the observer position at spacings:										
S = 1.0H	+ 1.4 / - 2.8					+ 1.0 / - 1.5				
1.5H	+ 2.2 / - 2.1					+ 1.5 / - 1.0				
2.0H	+ 2.8 / - 3.1					+ 1.7 / - 2.9				

CIE Pub.117, 2034 lm Total Lamp Luminous Flux Correct (8log(F/F0) = 2.5)

H(β) Range:-90 - 90DEG
H(β) Interval: 1.0DEG
Test Speed: HIGH
Temperature:25.3DEG
Operators:sunny
Test Date:2023-12-12

V(B) Range:-75 - 75DEG
V(B) Interval: 5.0DEG
Test System:EVERFINE GO-2000B_V1 SYSTEM V2.0.362
Humidity:65.0%
Test Distance:8.100m [K=1.0000]
Remarks: SDCM5.0

UTILIZATION FACTORS TABLE

Test:U:48.06V I:0.4830A P:23.22W PF:1.000 Freq:60.00Hz Lamp Flux:2033.89x1 lm		
NAME: 轨道灯	TYPE:	WEIGHT:
SPEC.:2995K-Ra91	DIM.:	SERIAL No.:
MFR.:	SUR.:	Shielding Angle:

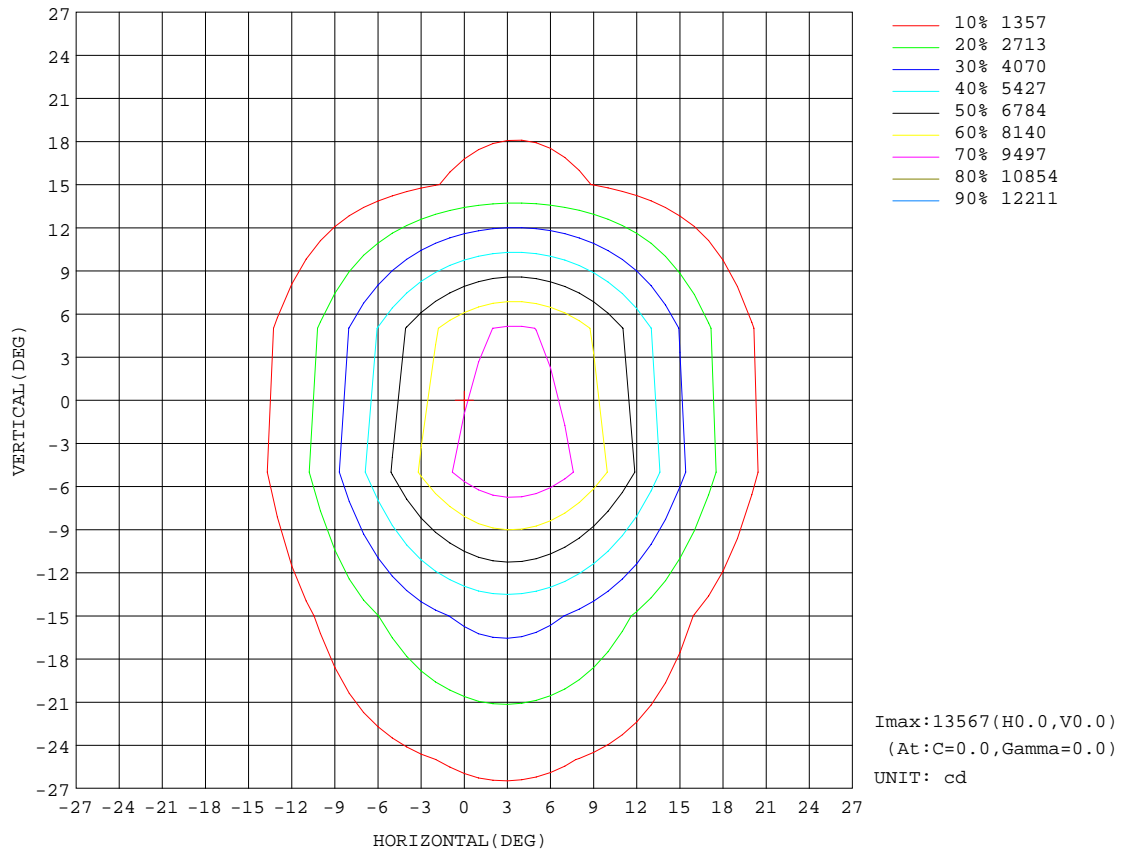
REFLECTANCE										
Ceiling	0.8	0.8	0.8	0.7	0.7	0.7	0.5	0.5	0.5	0
Walls	0.7	0.5	0.3	0.7	0.5	0.3	0.7	0.5	0.3	0
Working plane	0.2	0.2	0.2	0.2	0.2	0.2	0.2	0.2	0.2	0
ROOM INDEX	UTILIZATION FACTORS(PERCENT) $k(RI) \times RCR = 5$									
k = 0.60	90	84	81	90	84	81	89	84	80	77
0.80	97	92	88	96	91	88	95	91	88	84
1.00	101	96	93	100	95	92	99	95	92	88
1.25	105	100	97	104	99	96	102	98	96	92
1.50	107	103	100	106	102	99	104	101	98	94
2.00	109	106	103	108	105	102	105	103	100	95
2.50	111	108	105	109	106	104	106	104	102	96
3.00	112	109	107	111	108	106	107	105	103	97
4.00	114	112	110	112	110	108	109	107	106	99
5.00	116	113	112	113	112	110	110	108	107	100
ROOM INDEX	UF(total)									Direct
According to DIN EN 13032-2 2004			Suspended				SHRNOM = 1.25			

H(β) Range:-90 - 90DEG
H(β) Interval: 1.0DEG
Test Speed: HIGH
Temperature:25.3DEG
Operators:sunny
Test Date:2023-12-12

V(B) Range:-75 - 75DEG
V(B) Interval: 5.0DEG
Test System:EVERFINE GO-2000B_V1 SYSTEM V2.0.362
Humidity:65.0%
Test Distance:8.100m [K=1.0000]
Remarks: SDCM5.0

ISOCANDELA DIAGRAM

Test:U:48.06V I:0.4830A P:23.22W PF:1.000 Freq:60.00Hz Lamp Flux:2033.89x1 lm		
NAME: 轨道灯	TYPE:	WEIGHT:
SPEC.:2995K-Ra91	DIM.:	SERIAL No.:
MFR.:	SUR.:	Shielding Angle:

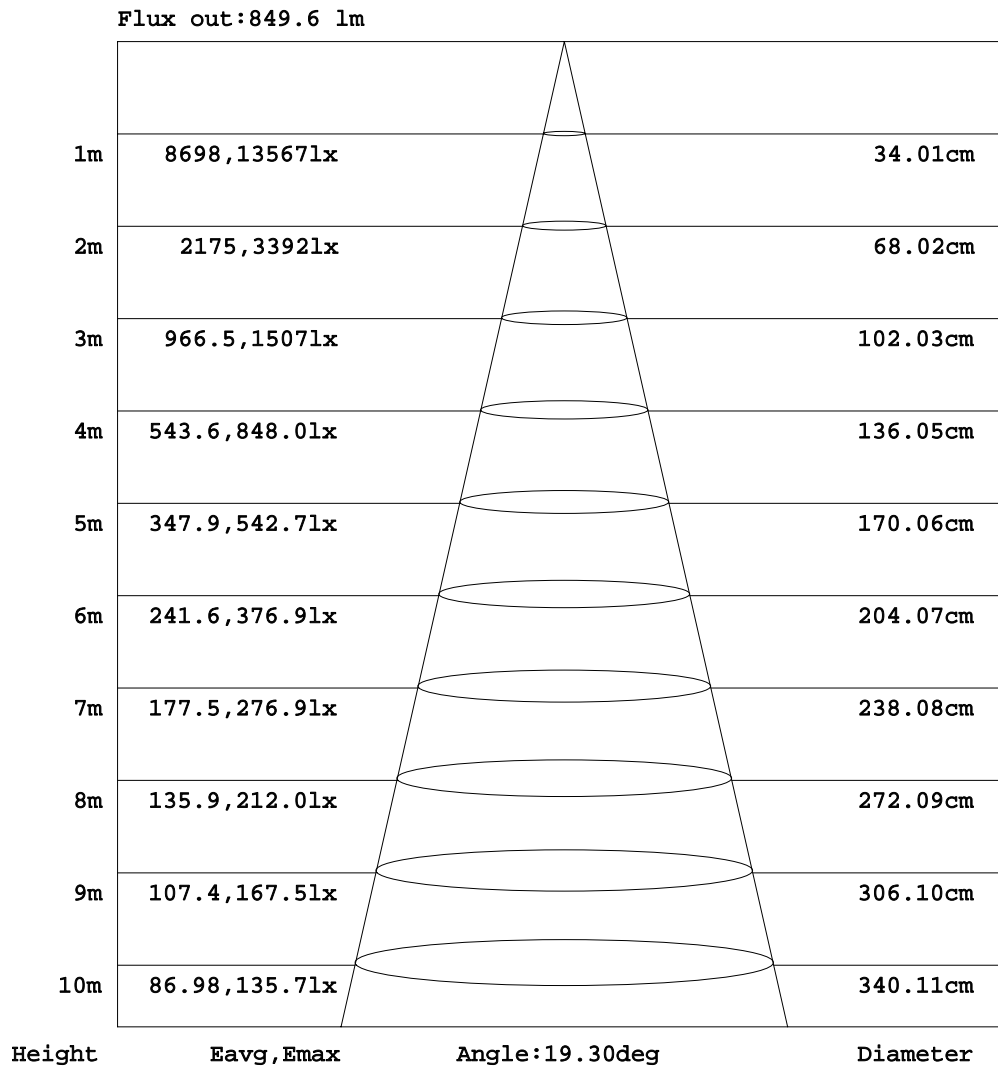


H(β) Range:-90 - 90DEG
H(β) Interval: 1.0DEG
Test Speed: HIGH
Temperature:25.3DEG
Operators:sunny
Test Date:2023-12-12

V(B) Range:-75 - 75DEG
V(B) Interval: 5.0DEG
Test System:EVERFINE GO-2000B_V1 SYSTEM V2.0.362
Humidity:65.0%
Test Distance:8.100m [K=1.0000]
Remarks: SDCM5.0

AAI Figure

Test:U:48.06V I:0.4830A P:23.22W PF:1.000 Freq:60.00Hz Lamp Flux:2033.89x1 lm		
NAME: 轨道灯	TYPE:	WEIGHT:
SPEC.:2995K-Ra91	DIM.:	SERIAL No.:
MFR.:	SUR.:	Shielding Angle:

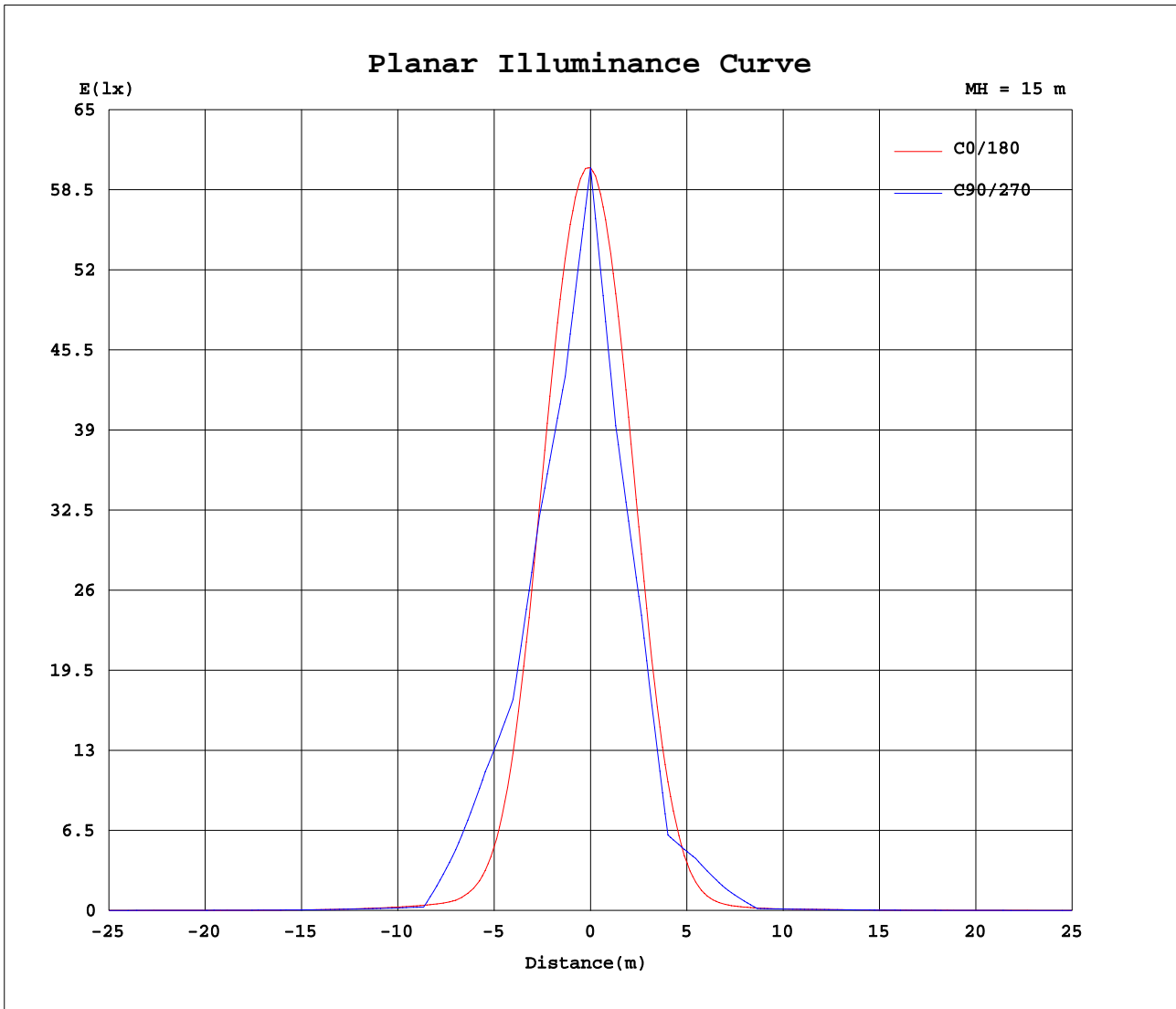


Note:The Curves indicate the illuminated area and the average illumination when the luminaire is at different distance.

H(β) Range:-90 - 90DEG
H(β) Interval: 1.0DEG
Test Speed: HIGH
Temperature:25.3DEG
Operators:sunny
Test Date:2023-12-12

V(B) Range:-75 - 75DEG
V(B) Interval: 5.0DEG
Test System:EVERFINE GO-2000B_V1 SYSTEM V2.0.362
Humidity:65.0%
Test Distance:8.100m [K=1.0000]
Remarks: SDCM5.0

Planar Illuminance Curve



H(β) Range:-90 - 90DEG
 H(β) Interval: 1.0DEG
 Test Speed: HIGH
 Temperature:25.3DEG
 Operators:sunny
 Test Date:2023-12-12

V(B) Range:-75 - 75DEG
 V(B) Interval: 5.0DEG
 Test System:EVERFINE GO-2000B_V1 SYSTEM V2.0.362
 Humidity:65.0%
 Test Distance:8.100m [K=1.0000]
 Remarks: SDCM5.0

LUMINOUS DISTRIBUTION INTENSITY DATA

Test:U:48.06V I:0.4830A P:23.22W PF:1.000 Freq:60.00Hz Lamp Flux:2033.89x1 lm		
NAME: 轨道灯	TYPE:	WEIGHT:
SPEC.:2995K-Ra91	DIM.:	SERIAL No.:
MFR.:	SUR.:	Shielding Angle:

Table--1

UNIT: x10cd

C(DEG) γ (DEG)	0	5	10	15	20	25	30	35	40	45	50	55	60	65	70	75	80	85	90
0	1357	1357	1357	1357	1357	1357	1357	1357	1357	1357	1357	1357	1357	1357	1357	1357	1357	1357	1357
5	1205	1191	1180	1170	1161	1153	1146	1139	1131	1121	1112	1101	1087	1073	1057	1040	1022	1003	987
10	773	783	800	821	845	871	891	857	826	802	781	767	758	752	749	750	752	754	754
15	320	355	399	452	492	452	414	378	346	367	401	430	453	469	476	474	464	449	428
20	88.4	114	145	171	147	119	98.1	125	157	195	220	231	243	254	266	279	291	301	306
25	25.5	33.4	44.0	39.3	30.1	27.8	37.3	52.4	56.3	58.7	57.7	73.7	100.0	126	147	160	164	160	149
30	15.1	16.2	16.7	14.1	12.9	14.5	15.5	14.7	13.5	18.7	28.6	41.5	46.5	46.6	40.8	31.0	20.5	12.8	10.2
35	10.2	11.1	10.4	8.73	9.37	9.22	8.11	8.10	9.04	9.68	9.54	6.64	6.31	6.70	7.18	7.69	7.97	8.01	7.86
40	6.33	7.55	6.49	6.30	6.72	5.68	5.83	5.85	5.14	4.51	4.85	5.09	5.17	5.22	5.31	5.45	5.60	5.71	5.75
45	3.84	4.90	3.80	4.67	4.04	4.14	4.15	3.48	3.65	3.79	3.73	3.64	3.65	3.70	3.73	3.73	3.67	3.59	3.53
50	2.52	3.04	2.77	3.01	2.82	2.93	2.60	2.88	2.79	2.63	2.70	2.75	2.77	2.75	2.76	2.78	2.82	2.83	2.84
55	1.79	2.03	2.19	1.89	2.15	1.92	2.11	1.91	2.00	2.06	1.98	1.93	1.96	2.04	2.10	2.13	2.15	2.14	2.12
60	1.10	1.25	1.49	1.51	1.30	1.44	1.28	1.46	1.37	1.32	1.37	1.41	1.38	1.36	1.39	1.40	1.41	1.42	1.42
65	0.53	0.62	0.63	0.68	0.86	0.77	0.82	0.74	0.85	0.83	0.76	0.73	0.79	0.83	0.90	0.94	0.96	0.95	0.95
70	0.11	0.34	0.37	0.38	0.33	0.30	0.35	0.31	0.27	0.38	0.45	0.47	0.47	0.46	0.47	0.48	0.47	0.47	0.47
75	0.00	0.03	0.02	0.02	0.04	0.06	0.01	0.11	0.15	0.15	0.15	0.14	0.12	0.09	0.06	0.04	0.02	0.01	0.00
80	0.00	0.00	0.00	0.00	0.00	0.00	0.00	0.00	0.00	0.00	0.00	0.00	0.00	0.00	0.00	0.00	0.00	0.00	0.00
85	0.00	0.00	0.00	0.00	0.00	0.00	0.00	0.00	0.00	0.00	0.00	0.00	0.00	0.00	0.00	0.00	0.00	0.00	0.00
90	0.00	0.00	0.00	0.00	0.00	0.00	0.00	0.00	0.00	0.00	0.00	0.00	0.00	0.00	0.00	0.00	0.00	0.00	0.00

H(β) Range:-90 - 90DEG
H(β) Interval: 1.0DEG
Test Speed: HIGH
Temperature:25.3DEG
Operators:sunny
Test Date:2023-12-12

V(B) Range:-75 - 75DEG
V(B) Interval: 5.0DEG
Test System:EVERFINE GO-2000B_V1 SYSTEM V2.0.362
Humidity:65.0%
Test Distance:8.100m [K=1.0000]
Remarks: SDCM5.0

LUMINOUS DISTRIBUTION INTENSITY DATA

Test:U:48.06V I:0.4830A P:23.22W PF:1.000 Freq:60.00Hz Lamp Flux:2033.89x1 lm		
NAME: 轨道灯	TYPE:	WEIGHT:
SPEC.:2995K-Ra91	DIM.:	SERIAL No.:
MFR.:	SUR.:	Shielding Angle:

Table--2

UNIT: x10cd

C(DEG) γ (DEG)	95	100	105	110	115	120	125	130	135	140	145	150	155	160	165	170	175	180	185
0	1357	1357	1357	1357	1357	1357	1357	1357	1357	1357	1357	1357	1357	1357	1357	1357	1357	1357	1357
5	969	954	940	929	922	916	914	916	921	930	944	960	981	1005	1034	1066	1101	1140	1095
10	750	742	727	707	682	651	615	576	536	493	451	410	439	477	519	567	621	682	615
15	406	387	370	357	348	340	334	329	325	306	250	201	161	125	148	182	219	261	216
20	302	287	265	234	197	158	121	86.0	74.2	81.3	83.6	82.8	60.4	41.1	27.5	36.2	48.9	62.7	48.3
25	137	125	115	105	95.2	84.1	72.3	55.6	33.2	20.2	13.6	16.7	17.5	15.3	11.4	9.65	12.4	15.2	12.2
30	12.4	17.0	21.2	22.7	21.2	17.4	13.3	13.6	12.8	11.7	9.01	7.10	6.87	7.39	6.79	5.75	6.21	7.12	6.12
35	7.51	7.14	6.81	6.57	6.40	6.29	6.25	6.13	5.60	5.40	5.61	5.44	4.76	4.66	4.98	4.53	4.50	5.04	4.45
40	5.72	5.53	5.29	5.04	4.80	4.53	4.35	4.36	4.37	4.13	3.77	3.85	3.98	3.54	3.68	3.68	3.45	3.99	3.40
45	3.51	3.55	3.57	3.59	3.60	3.61	3.51	3.26	3.05	3.16	3.29	2.88	2.86	2.94	2.59	2.97	2.53	3.10	2.50
50	2.83	2.80	2.76	2.67	2.55	2.43	2.38	2.46	2.53	2.34	2.19	2.38	2.12	2.16	2.04	2.11	1.99	2.32	1.98
55	2.09	2.06	2.01	1.95	1.92	1.91	1.87	1.75	1.63	1.70	1.73	1.52	1.74	1.61	1.71	1.54	1.60	1.85	1.56
60	1.42	1.41	1.38	1.30	1.26	1.21	1.16	1.19	1.23	1.15	0.95	1.11	1.02	1.25	0.85	0.85	0.96	1.13	0.90
65	0.93	0.90	0.86	0.81	0.79	0.77	0.74	0.70	0.64	0.59	0.63	0.51	0.54	0.43	0.54	0.50	0.48	0.57	0.44
70	0.48	0.48	0.46	0.44	0.43	0.41	0.38	0.34	0.31	0.26	0.17	0.17	0.19	0.09	0.05	0.01	0.03	0.15	0.03
75	0.01	0.02	0.04	0.07	0.09	0.12	0.14	0.15	0.14	0.07	0.00	0.00	0.00	0.00	0.00	0.00	0.00	0.00	0.00
80	0.00	0.00	0.00	0.00	0.00	0.00	0.00	0.00	0.00	0.00	0.00	0.00	0.00	0.00	0.00	0.00	0.00	0.00	0.00
85	0.00	0.00	0.00	0.00	0.00	0.00	0.00	0.00	0.00	0.00	0.00	0.00	0.00	0.00	0.00	0.00	0.00	0.00	0.00
90	0.00	0.00	0.00	0.00	0.00	0.00	0.00	0.00	0.00	0.00	0.00	0.00	0.00	0.00	0.00	0.00	0.00	0.00	0.00

H(β) Range:-90 - 90DEG
H(β) Interval: 1.0DEG
Test Speed: HIGH
Temperature:25.3DEG
Operators:sunny
Test Date:2023-12-12

V(B) Range:-75 - 75DEG
V(B) Interval: 5.0DEG
Test System:EVERFINE GO-2000B_V1 SYSTEM V2.0.362
Humidity:65.0%
Test Distance:8.100m [K=1.0000]
Remarks: SDCM5.0

LUMINOUS DISTRIBUTION INTENSITY DATA

Test:U:48.06V I:0.4830A P:23.22W PF:1.000 Freq:60.00Hz Lamp Flux:2033.89x1 lm		
NAME: 轨道灯	TYPE:	WEIGHT:
SPEC.:2995K-Ra91	DIM.:	SERIAL No.:
MFR.:	SUR.:	Shielding Angle:

Table--3

UNIT: x10cd

C(DEG) γ (DEG)	190	195	200	205	210	215	220	225	230	235	240	245	250	255	260	265	270	275	280
0	1357	1357	1357	1357	1357	1357	1357	1357	1357	1357	1357	1357	1357	1357	1357	1357	1357	1357	1357
5	1054	1016	981	950	923	901	881	866	855	848	844	845	849	856	867	879	895	911	930
10	555	500	450	403	365	390	415	440	465	487	508	525	539	549	556	561	565	567	571
15	177	139	110	131	156	184	217	221	213	201	187	172	158	148	143	145	153	167	184
20	34.8	24.7	33.4	45.4	58.9	55.9	47.8	32.7	25.9	35.0	46.7	60.5	75.6	90.1	102	111	115	114	111
25	9.17	10.1	12.7	14.0	12.6	8.98	10.7	13.5	18.1	22.0	25.5	29.4	33.2	37.6	42.5	48.6	54.9	60.3	63.1
30	5.51	6.21	6.52	5.92	5.72	6.54	7.60	7.65	7.58	7.34	8.02	8.72	9.23	9.05	7.99	6.57	5.85	6.85	9.82
35	4.39	4.71	4.36	4.31	4.67	4.64	4.41	4.44	4.65	4.66	4.60	4.57	4.58	4.61	4.67	4.73	4.78	4.84	4.88
40	3.57	3.52	3.33	3.64	3.44	3.30	3.50	3.59	3.50	3.43	3.49	3.58	3.65	3.71	3.76	3.78	3.79	3.80	3.80
45	2.87	2.47	2.74	2.63	2.56	2.80	2.67	2.57	2.69	2.78	2.79	2.74	2.70	2.68	2.68	2.70	2.74	2.79	2.83
50	2.08	1.99	2.04	1.99	2.08	1.87	1.96	2.11	2.03	1.95	1.93	1.96	2.00	2.04	2.08	2.11	2.12	2.12	2.12
55	1.47	1.63	1.40	1.62	1.35	1.43	1.36	1.29	1.39	1.45	1.43	1.40	1.39	1.39	1.41	1.44	1.46	1.49	1.50
60	0.74	0.72	0.91	0.74	0.88	0.66	0.81	0.89	0.85	0.80	0.82	0.82	0.82	0.83	0.83	0.83	0.83	0.83	0.84
65	0.41	0.39	0.27	0.32	0.30	0.39	0.31	0.31	0.36	0.37	0.42	0.45	0.48	0.50	0.52	0.54	0.55	0.56	0.56
70	0.00	0.01	0.04	0.06	0.08	0.06	0.00	0.06	0.12	0.17	0.21	0.24	0.26	0.27	0.27	0.28	0.28	0.28	0.28
75	0.00	0.00	0.00	0.00	0.00	0.00	0.00	0.02	0.06	0.07	0.07	0.05	0.04	0.02	0.01	0.00	0.00	0.00	0.01
80	0.00	0.00	0.00	0.00	0.00	0.00	0.00	0.00	0.00	0.00	0.00	0.00	0.00	0.00	0.00	0.00	0.00	0.00	0.00
85	0.00	0.00	0.00	0.00	0.00	0.00	0.00	0.00	0.00	0.00	0.00	0.00	0.00	0.00	0.00	0.00	0.00	0.00	0.00
90	0.00	0.00	0.00	0.00	0.00	0.00	0.00	0.00	0.00	0.00	0.00	0.00	0.00	0.00	0.00	0.00	0.00	0.00	0.00

H(β) Range:-90 - 90DEG
H(β) Interval: 1.0DEG
Test Speed: HIGH
Temperature:25.3DEG
Operators:sunny
Test Date:2023-12-12

V(B) Range:-75 - 75DEG
V(B) Interval: 5.0DEG
Test System:EVERFINE GO-2000B_V1 SYSTEM V2.0.362
Humidity:65.0%
Test Distance:8.100m [K=1.0000]
Remarks: SDCM5.0

LUMINOUS DISTRIBUTION INTENSITY DATA

Test:U:48.06V I:0.4830A P:23.22W PF:1.000 Freq:60.00Hz Lamp Flux:2033.89x1 lm		
NAME: 轨道灯	TYPE:	WEIGHT:
SPEC.:2995K-Ra91	DIM.:	SERIAL No.:
MFR.:	SUR.:	Shielding Angle:

Table--4

UNIT: x10cd

C(DEG) γ (DEG)	285	290	295	300	305	310	315	320	325	330	335	340	345	350	355				
0	1357	1357	1357	1357	1357	1357	1357	1357	1357	1357	1357	1357	1357	1357	1357				
5	948	968	987	1005	1023	1039	1055	1071	1086	1100	1114	1130	1146	1164	1183				
10	577	586	599	617	639	665	697	732	772	815	808	796	784	776	771				
15	204	224	240	253	262	266	265	272	317	363	407	452	422	381	346				
20	106	101	95.9	91.0	86.3	81.7	82.1	83.8	81.1	76.3	104	134	159	137	110				
25	61.9	56.4	48.1	38.8	30.1	25.0	25.5	25.1	24.0	23.1	22.1	27.4	36.9	41.9	32.5				
30	13.9	17.4	19.4	19.4	18.1	14.1	11.1	9.77	10.6	11.5	11.7	11.5	13.2	16.1	15.8				
35	4.88	4.88	4.90	4.91	5.11	6.37	6.89	7.08	6.81	6.96	7.91	8.29	8.07	9.99	10.8				
40	3.82	3.86	3.94	4.05	4.10	3.98	3.85	4.34	5.01	5.04	4.97	5.88	5.71	6.15	7.36				
45	2.87	2.91	2.93	2.95	2.98	3.09	3.23	3.10	2.97	3.58	3.62	3.59	4.18	3.57	4.76				
50	2.12	2.13	2.16	2.20	2.25	2.25	2.21	2.35	2.44	2.23	2.57	2.52	2.72	2.59	2.95				
55	1.51	1.51	1.51	1.51	1.53	1.61	1.70	1.64	1.57	1.77	1.67	1.91	1.73	2.05	1.97				
60	0.85	0.88	0.92	0.96	1.02	1.02	0.97	1.03	1.14	1.00	1.20	1.02	1.31	1.35	1.18				
65	0.55	0.53	0.50	0.45	0.39	0.42	0.50	0.53	0.47	0.57	0.53	0.62	0.52	0.53	0.57				
70	0.28	0.28	0.28	0.27	0.26	0.22	0.13	0.01	0.13	0.20	0.15	0.14	0.23	0.26	0.29				
75	0.02	0.04	0.05	0.07	0.07	0.06	0.04	0.01	0.00	0.00	0.03	0.00	0.00	0.00	0.01				
80	0.00	0.00	0.00	0.00	0.00	0.00	0.00	0.00	0.00	0.00	0.00	0.00	0.00	0.00	0.00				
85	0.00	0.00	0.00	0.00	0.00	0.00	0.00	0.00	0.00	0.00	0.00	0.00	0.00	0.00	0.00				
90	0.00	0.00	0.00	0.00	0.00	0.00	0.00	0.00	0.00	0.00	0.00	0.00	0.00	0.00	0.00				

H(β) Range:-90 - 90DEG
H(β) Interval: 1.0DEG
Test Speed: HIGH
Temperature:25.3DEG
Operators:sunny
Test Date:2023-12-12

V(B) Range:-75 - 75DEG
V(B) Interval: 5.0DEG
Test System:EVERFINE GO-2000B_V1 SYSTEM V2.0.362
Humidity:65.0%
Test Distance:8.100m [K=1.0000]
Remarks: SDCM5.0