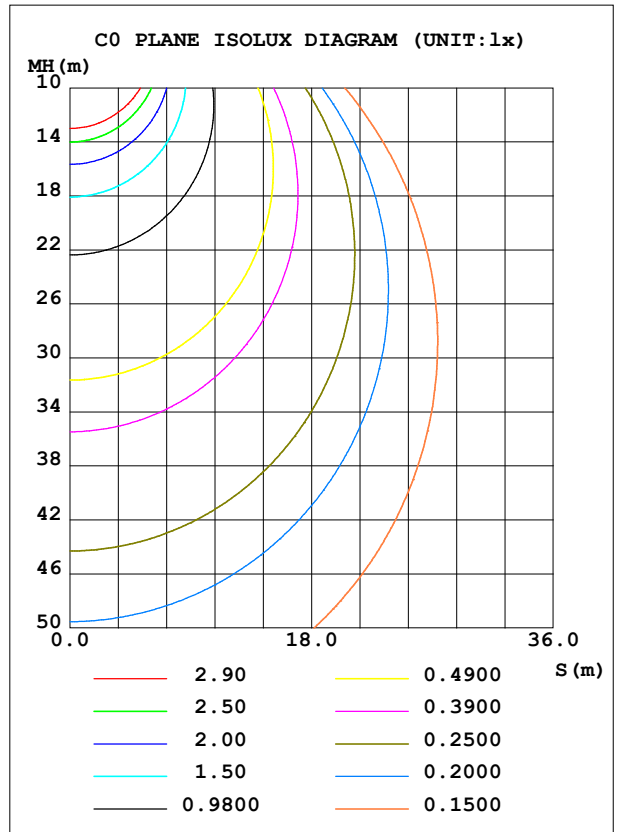
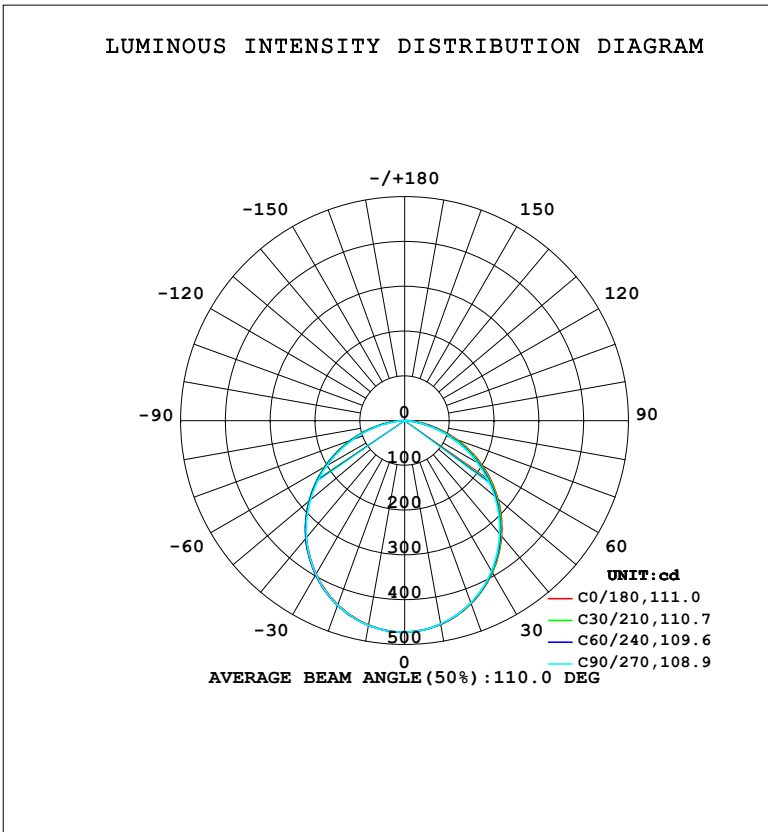


**LUMINAIRE PHOTOMETRIC TEST REPORT**

Test:U:230.39V I:0.1081A P:14.002W PF:0.5623 Freq:50.00Hz Lamp Flux:1303.78x1 lm		
NAME:	TYPE:	WEIGHT:
SPEC.: 白光	DIM.:	SERIAL No.:
MFR.: EVERFINE	SUR.:	Shielding Angle:

DATA OF LAMP		PHOTOMETRIC DATA				Eff: 93.11 lm/W
MODEL	P7	I <sub>max</sub> (cd)	472.1	S/MH (C0/180)	1.25	
NOMINAL POWER (W)	15	LOR (%)	100.0	S/MH (C90/270)	1.25	
RATED VOLTAGE (V)	230	TOTAL FLUX (lm)	1303.8	η UP, DN (C0-180)	0.0, 49.3	
NOMINAL FLUX (lm)	1303.78	CIE CLASS	DIRECT	η UP, DN (C180-360)	0.0, 50.7	
LAMPS INSIDE	1	η up (%)	0.0	CIBSE SHR NOM	1.25	
TEST VOLTAGE (V)	230	η down (%)	100.0	CIBSE SHR MAX	1.35	



C Range: 0 - 360DEG  
 C Interval: 15.0DEG  
 Test Speed: HIGH  
 Temperature: 25.3°C  
 Operators: DAMIN  
 Test Date: 2024-11-12

γ Range: 0 - 90DEG  
 γ Interval: 1.0DEG  
 Test System: EVERFINE GO-2000B\_V1 SYSTEM V2.00.473  
 Humidity: 65.0%  
 Test Distance: 9.401m [K=1.0000]  
 Remarks:

ZONAL FLUX DIAGRAM

ZONAL FLUX DIAGRAM:

$\gamma$	C0	C45	C90	C135	C180	C225	C270	C315	$\gamma$	$\Phi$ zone	$\Phi$ total	%lum,lamp
10	462.2	461.9	461.2	462.0	463.4	463.9	464.3	463.2	0- 10	44.62	44.62	3.42,3.42
20	434.7	434.1	432.6	434.2	437.1	438.1	438.3	436.4	10- 20	127.3	171.9	13.2,13.2
30	392.0	391.2	388.1	390.8	395.3	396.7	396.6	393.9	20- 30	191.8	363.7	27.9,27.9
40	336.8	336.1	330.0	335.5	341.8	341.8	341.5	338.3	30- 40	229.4	593.1	45.5,45.5
50	272.0	269.5	262.1	268.8	277.4	276.3	274.6	272.5	40- 50	235.8	828.9	63.6,63.6
60	200.1	195.3	187.9	194.9	205.4	202.7	200.2	199.0	50- 60	210.5	1039	79.7,79.7
70	124.5	117.4	109.9	117.7	128.9	125.9	121.9	122.6	60- 70	158.2	1198	91.9,91.9
80	51.45	43.01	35.85	43.14	54.89	50.04	45.27	48.10	70- 80	87.75	1285	98.6,98.6
90	1.066	1.070	1.039	1.064	1.164	1.124	1.111	1.144	80- 90	18.39	1304	100,100
100									90-100			
110									100-110			
120									110-120			
130									120-130			
140									130-140			
150									140-150			
160									150-160			
170									160-170			
180									170-180			
DEG	LUMINOUS INTENSITY:cd									UNIT:lm		

Conical surface Flux(90deg): 712.26 lm

%lum = 54.6%

%lamp = 54.6%

Conical surface Flux(130deg): 1126.5 lm

%lum = 86.4%

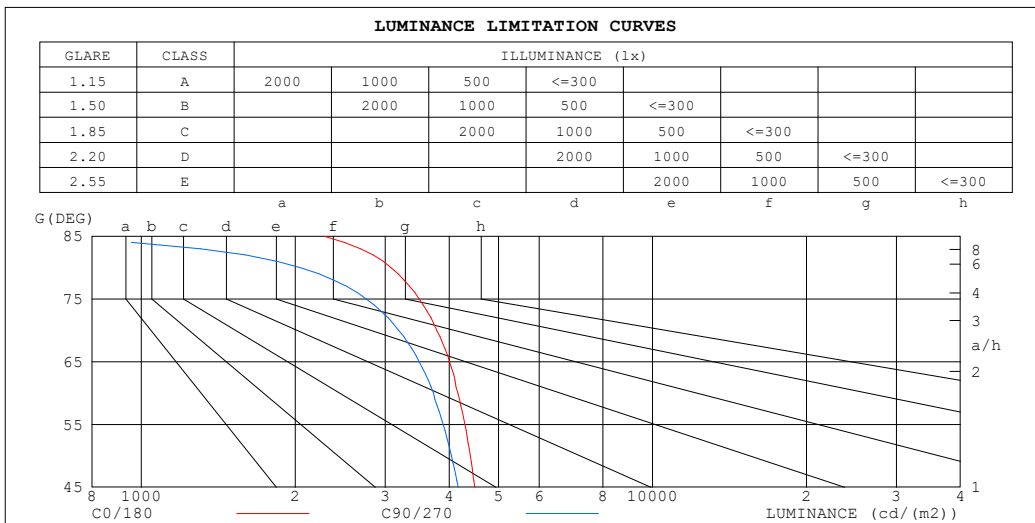
%lamp = 86.4%

C Range: 0 - 360DEG  
 C Interval: 15.0DEG  
 Test Speed: HIGH  
 Temperature:25.3°C  
 Operators:DAMIN  
 Test Date:2024-11-12

$\gamma$  Range: 0 - 90DEG  
 $\gamma$  Interval: 1.0DEG  
 Test System:EVERFINE GO-2000B\_V1 SYSTEM V2.00.473  
 Humidity:65.0%  
 Test Distance:9.401m [K=1.0000]  
 Remarks:

LUMINANCE LIMITATION CURVES

Test:U:230.39V I:0.1081A P:14.002W PF:0.5623 Freq:50.00Hz Lamp Flux:1303.78x1 lm		
NAME:	TYPE:	WEIGHT:
SPEC.: 白光	DIM.:	SERIAL No.:
MFR.: EVERFINE	SUR.:	Shielding Angle:



LUMINANCE cd/ (m2)		
G (DEG)	C0/180	C90/270
85	2280	584
80	3079	2047
75	3497	2755
70	3784	3187
65	4008	3496
60	4159	3727
55	4293	3894
50	4399	4043
45	4491	4167

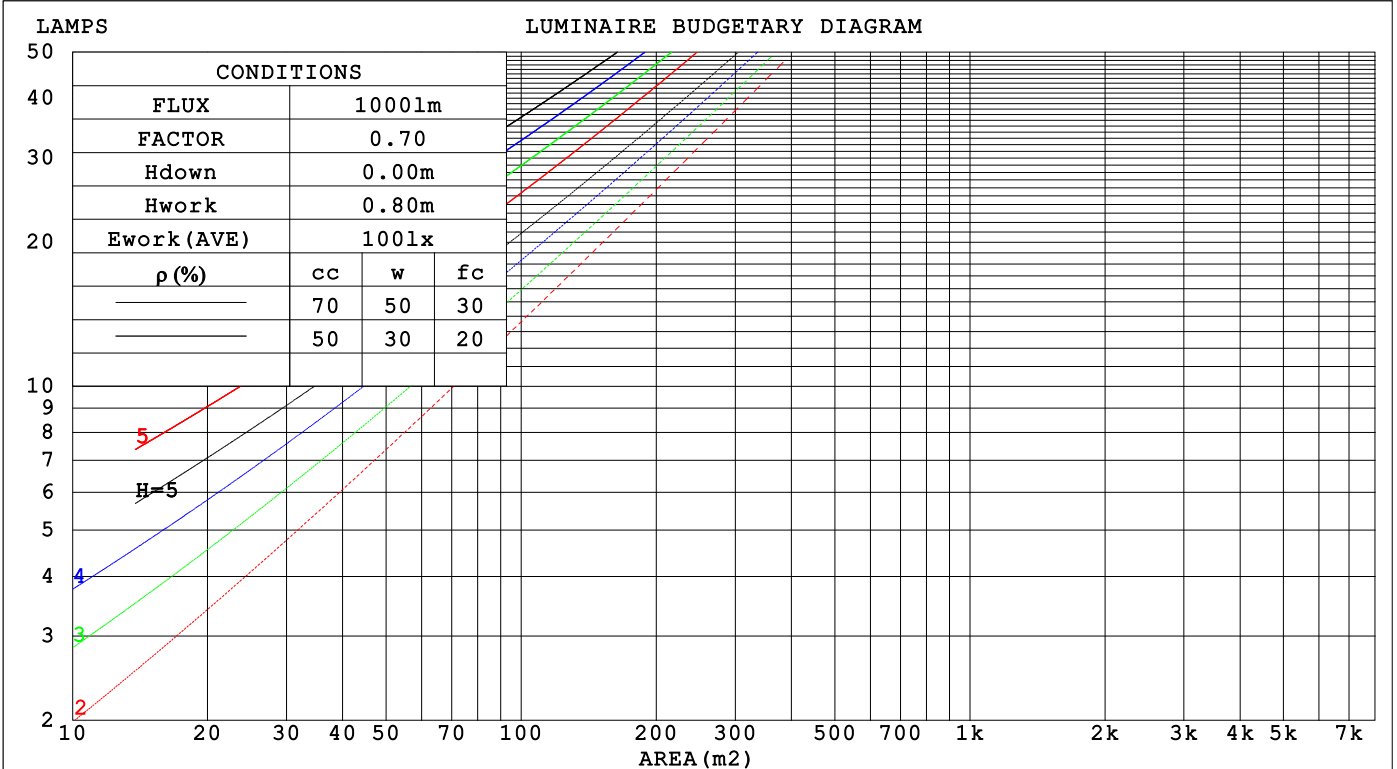
C Range: 0 - 360DEG  
 C Interval: 15.0DEG  
 Test Speed: HIGH  
 Temperature: 25.3°C  
 Operators: DAMIN  
 Test Date: 2024-11-12

γ Range: 0 - 90DEG  
 γ Interval: 1.0DEG  
 Test System: EVERFINE GO-2000B\_V1 SYSTEM V2.00.473  
 Humidity: 65.0%  
 Test Distance: 9.401m [K=1.0000]  
 Remarks:

**CU AND LUMINAIRE BUDGETARY ESTIMATE DIAGRAM**

Test:U:230.39V I:0.1081A P:14.002W PF:0.5623 Freq:50.00Hz Lamp Flux:1303.78x1 lm		
NAME:	TYPE:	WEIGHT:
SPEC.: 白光	DIM.:	SERIAL No.:
MFR.: EVERFINE	SUR.:	Shielding Angle:

$\rho_{cc}$	80%			70%			50%			30%			10%			0
$\rho_w$	50%	30%	10%	50%	30%	10%	50%	30%	10%	50%	30%	10%	50%	30%	10%	0
$\rho_{fc}$	20%			20%			20%			20%			20%			0
RCR	RCR:Room Cavity Ratio      Coefficients of Utilization(CU)															
0.0	1.19	1.19	1.19	1.16	1.16	1.16	1.11	1.11	1.11	1.06	1.06	1.06	1.02	1.02	1.02	1.00
1.0	1.04	1.00	.96	1.02	.98	.95	.98	.95	.92	.94	.91	.89	.90	.88	.86	.84
2.0	.91	.84	.78	.89	.83	.78	.85	.80	.76	.82	.78	.74	.79	.76	.72	.70
3.0	.80	.72	.65	.78	.71	.65	.75	.69	.64	.73	.67	.62	.70	.65	.61	.59
4.0	.71	.62	.55	.69	.61	.55	.67	.60	.54	.65	.58	.53	.62	.57	.53	.51
5.0	.63	.54	.48	.62	.54	.47	.60	.53	.47	.58	.51	.46	.56	.50	.46	.44
6.0	.57	.48	.42	.56	.48	.41	.54	.47	.41	.52	.46	.41	.51	.45	.40	.38
7.0	.52	.43	.37	.51	.43	.37	.49	.42	.36	.48	.41	.36	.46	.40	.36	.34
8.0	.47	.39	.33	.46	.38	.33	.45	.38	.32	.44	.37	.32	.43	.37	.32	.30
9.0	.43	.35	.29	.43	.35	.29	.42	.34	.29	.40	.34	.29	.39	.33	.29	.27
10.0	.40	.32	.27	.39	.32	.27	.38	.31	.27	.37	.31	.26	.37	.31	.26	.25



C Range: 0 - 360DEG  
 C Interval: 15.0DEG  
 Test Speed: HIGH  
 Temperature:25.3°C  
 Operators:DAMIN  
 Test Date:2024-11-12

$\gamma$  Range: 0 - 90DEG  
 $\gamma$  Interval: 1.0DEG  
 Test System:EVERFINE GO-2000B\_V1 SYSTEM V2.00.473  
 Humidity:65.0%  
 Test Distance:9.401m [K=1.0000]  
 Remarks:

WEC AND CCEC

Test:U:230.39V I:0.1081A P:14.002W PF:0.5623 Freq:50.00Hz		
Lamp Flux:1303.78x1 lm		
NAME:	TYPE:	WEIGHT:
SPEC.: 白光	DIM.:	SERIAL No.:
MFR.: EVERFINE	SUR.:	Shielding Angle:

$\rho_{CC}$	80%			70%			50%			30%			10%			0
$\rho_w$	50%	30%	10%	50%	30%	10%	50%	30%	10%	50%	30%	10%	50%	30%	10%	0
$\rho_{fc}$	20%			20%			20%			20%			20%			0
RCR	RCR:Room Cavity Ratio						Wall Exitance Coefficients(WEC)									
0.0																
1.0	.303	.172	.055	.296	.169	.054	.282	.162	.052	.270	.156	.050	.259	.150	.048	
2.0	.287	.157	.048	.281	.155	.048	.269	.150	.047	.259	.145	.045	.249	.141	.044	
3.0	.267	.142	.043	.261	.140	.042	.251	.136	.041	.241	.132	.041	.233	.129	.040	
4.0	.247	.128	.038	.242	.127	.037	.233	.123	.037	.224	.120	.036	.216	.118	.036	
5.0	.228	.116	.034	.224	.115	.034	.216	.112	.033	.208	.110	.033	.201	.108	.032	
6.0	.212	.106	.030	.208	.105	.030	.201	.103	.030	.194	.101	.030	.188	.099	.029	
7.0	.198	.098	.028	.194	.097	.028	.188	.095	.027	.182	.093	.027	.176	.091	.027	
8.0	.185	.090	.025	.182	.089	.025	.176	.088	.025	.170	.086	.025	.165	.085	.025	
9.0	.173	.084	.023	.170	.083	.023	.165	.082	.023	.160	.080	.023	.156	.079	.023	
10.0	.163	.078	.022	.160	.077	.022	.156	.076	.021	.151	.075	.021	.147	.074	.021	

$\rho_{CC}$	80%			70%			50%			30%			10%			0
$\rho_w$	50%	30%	10%	50%	30%	10%	50%	30%	10%	50%	30%	10%	50%	30%	10%	0
$\rho_{fc}$	20%			20%			20%			20%			20%			0
RCR	RCR:Room Cavity Ratio						Ceiling Cavity Exitance Coefficients(CCEC)									
0.0	.190	.190	.190	.163	.163	.163	.111	.111	.111	.064	.064	.064	.020	.020	.020	
1.0	.180	.156	.135	.154	.134	.116	.105	.092	.080	.061	.053	.047	.019	.017	.015	
2.0	.172	.132	.099	.147	.114	.085	.101	.079	.059	.058	.046	.035	.019	.015	.011	
3.0	.164	.114	.075	.140	.099	.065	.096	.068	.045	.056	.040	.027	.018	.013	.009	
4.0	.156	.101	.059	.134	.087	.051	.092	.061	.036	.053	.036	.021	.017	.012	.007	
5.0	.149	.091	.047	.128	.078	.041	.088	.055	.029	.051	.032	.017	.016	.010	.006	
6.0	.142	.082	.039	.122	.071	.034	.084	.050	.024	.049	.029	.014	.016	.010	.005	
7.0	.135	.075	.033	.116	.065	.029	.080	.046	.021	.047	.027	.012	.015	.009	.004	
8.0	.129	.069	.029	.111	.060	.025	.077	.042	.018	.045	.025	.011	.014	.008	.004	
9.0	.122	.064	.025	.106	.056	.022	.073	.039	.016	.043	.023	.009	.014	.008	.003	
10.0	.117	.060	.023	.101	.052	.020	.070	.037	.014	.041	.022	.008	.013	.007	.003	

C Range: 0 - 360DEG  
 C Interval: 15.0DEG  
 Test Speed: HIGH  
 Temperature:25.3°C  
 Operators:DAMIN  
 Test Date:2024-11-12

$\gamma$  Range: 0 - 90DEG  
 $\gamma$  Interval: 1.0DEG  
 Test System:EVERFINE GO-2000B\_V1 SYSTEM V2.00.473  
 Humidity:65.0%  
 Test Distance:9.401m [K=1.0000]  
 Remarks:

**UGR(Unified Glare Rating) Table**

Test:U:230.39V I:0.1081A P:14.002W PF:0.5623 Freq:50.00Hz										
Lamp Flux:1303.78x1 lm										
NAME:			TYPE:				WEIGHT:			
SPEC.: 白光			DIM.:				SERIAL No.:			
MFR.: EVERFINE			SUR.:				Shielding Angle:			
ceiling/cavity	0.7	0.7	0.5	0.5	0.3	0.7	0.7	0.5	0.5	0.3
walls	0.5	0.3	0.5	0.3	0.3	0.5	0.3	0.5	0.3	0.3
working plane	0.2	0.2	0.2	0.2	0.2	0.2	0.2	0.2	0.2	0.2
Room dimensions	Viewed crosswise					Viewed endwise				
x = 2H y = 2H	17.0	18.5	17.3	18.8	19.0	16.6	18.1	16.9	18.3	18.5
3H	18.6	20.0	18.9	20.2	20.4	17.9	19.3	18.2	19.6	19.8
4H	19.2	20.5	19.5	20.7	21.0	18.4	19.7	18.7	20.0	20.2
6H	19.6	20.8	19.9	21.1	21.4	18.7	19.9	19.0	20.2	20.5
8H	19.7	20.9	20.0	21.2	21.5	18.7	19.9	19.0	20.2	20.5
12H	19.8	20.9	20.1	21.2	21.5	18.7	19.8	19.0	20.1	20.4
4H 2H	17.6	18.9	17.9	19.1	19.4	17.2	18.5	17.5	18.8	19.1
3H	19.3	20.4	19.6	20.7	21.0	18.7	19.9	19.1	20.2	20.5
4H	20.0	21.0	20.4	21.4	21.7	19.3	20.4	19.7	20.7	21.0
6H	20.5	21.5	20.9	21.8	22.2	19.7	20.6	20.1	21.0	21.3
8H	20.7	21.6	21.1	21.9	22.3	19.7	20.6	20.1	21.0	21.4
12H	20.8	21.6	21.2	22.0	22.4	19.7	20.5	20.1	20.9	21.3
8H 4H	20.2	21.1	20.6	21.4	21.8	19.6	20.5	20.0	20.8	21.2
6H	20.8	21.6	21.3	22.0	22.4	20.0	20.8	20.5	21.2	21.6
8H	21.1	21.7	21.5	22.1	22.6	20.1	20.8	20.6	21.2	21.7
12H	21.2	21.8	21.7	22.2	22.7	20.1	20.7	20.6	21.1	21.6
12H 4H	20.2	21.0	20.6	21.4	21.8	19.6	20.4	20.0	20.8	21.2
6H	20.9	21.5	21.3	21.9	22.4	20.1	20.7	20.5	21.1	21.6
8H	21.1	21.7	21.6	22.1	22.6	20.2	20.8	20.7	21.2	21.7
Variations with the observer position at spacings(CIE Pub.117):										
S = 1.0H	+ 0.2 / - 0.2					+ 0.2 / - 0.2				
1.5H	+ 0.2 / - 0.3					+ 0.2 / - 0.4				
2.0H	+ 0.2 / - 0.3					+ 0.2 / - 0.3				

CIE Pub.117, 1304 lm Total Lamp Luminous Flux Correct (8log(F/F0) = 0.9)  
 Area: 0.1 m2

C Range: 0 - 360DEG  
 C Interval: 15.0DEG  
 Test Speed: HIGH  
 Temperature:25.3°C  
 Operators:DAMIN  
 Test Date:2024-11-12

γ Range: 0 - 90DEG  
 γ Interval: 1.0DEG  
 Test System:EVERFINE GO-2000B\_V1 SYSTEM V2.00.473  
 Humidity:65.0%  
 Test Distance:9.401m [K=1.0000]  
 Remarks:

**UTILIZATION FACTORS TABLE**

Test:U:230.39V I:0.1081A P:14.002W PF:0.5623 Freq:50.00Hz Lamp Flux:1303.78x1 lm		
NAME:	TYPE:	WEIGHT:
SPEC.: 白光	DIM.:	SERIAL No.:
MFR.: EVERFINE	SUR.:	Shielding Angle:

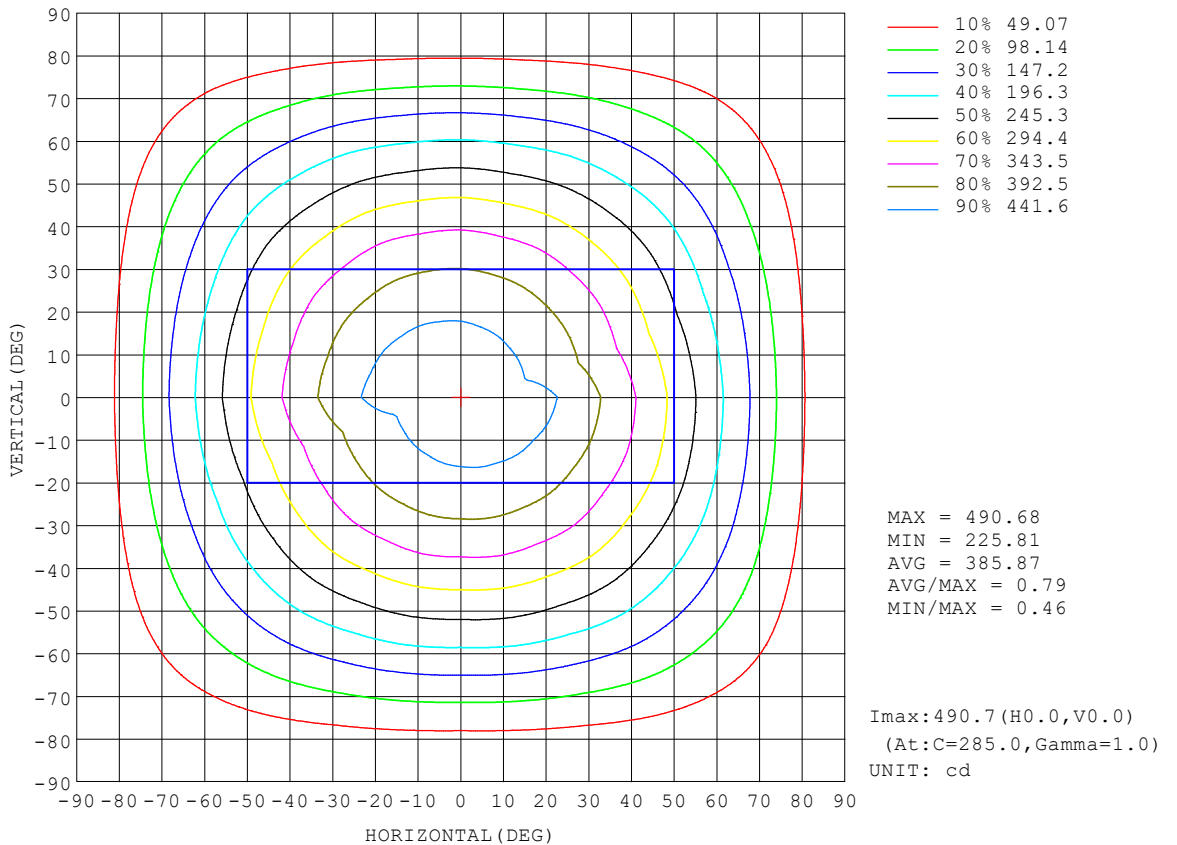
REFLECTANCE										
Ceiling	0.8	0.8	0.8	0.7	0.7	0.7	0.5	0.5	0.5	0
Walls	0.7	0.5	0.3	0.7	0.5	0.3	0.7	0.5	0.3	0
Working plane	0.2	0.2	0.2	0.2	0.2	0.2	0.2	0.2	0.2	0
ROOM INDEX	UTILIZATION FACTORS (PERCENT) $k(RI) \times RCR = 5$									
k = 0.60	58	46	40	57	46	39	56	46	39	33
0.80	68	57	49	67	56	49	65	55	49	42
1.00	76	66	58	75	65	58	73	66	57	50
1.25	84	73	66	82	73	66	79	71	65	58
1.50	89	79	72	87	78	71	84	76	70	63
2.00	95	87	81	94	86	80	90	84	78	71
2.50	99	92	86	97	90	85	93	88	83	75
3.00	103	96	90	100	94	89	96	91	87	79
4.00	107	101	96	104	99	95	100	96	92	84
5.00	109	104	100	107	102	99	102	99	96	87
ROOM INDEX	UF(total)									Direct
According to DIN EN 13032-2 2004			Suspended				SHRNOM = 1.25			

C Range: 0 - 360DEG  
 C Interval: 15.0DEG  
 Test Speed: HIGH  
 Temperature: 25.3°C  
 Operators: DAMIN  
 Test Date: 2024-11-12

$\gamma$  Range: 0 - 90DEG  
 $\gamma$  Interval: 1.0DEG  
 Test System: EVERFINE GO-2000B\_V1 SYSTEM V2.00.473  
 Humidity: 65.0%  
 Test Distance: 9.401m [K=1.0000]  
 Remarks:

ISOCANDELA DIAGRAM

Test:U:230.39V I:0.1081A P:14.002W PF:0.5623 Freq:50.00Hz Lamp Flux:1303.78x1 lm		
NAME:	TYPE:	WEIGHT:
SPEC.: 白光	DIM.:	SERIAL No.:
MFR.: EVERFINE	SUR.:	Shielding Angle:



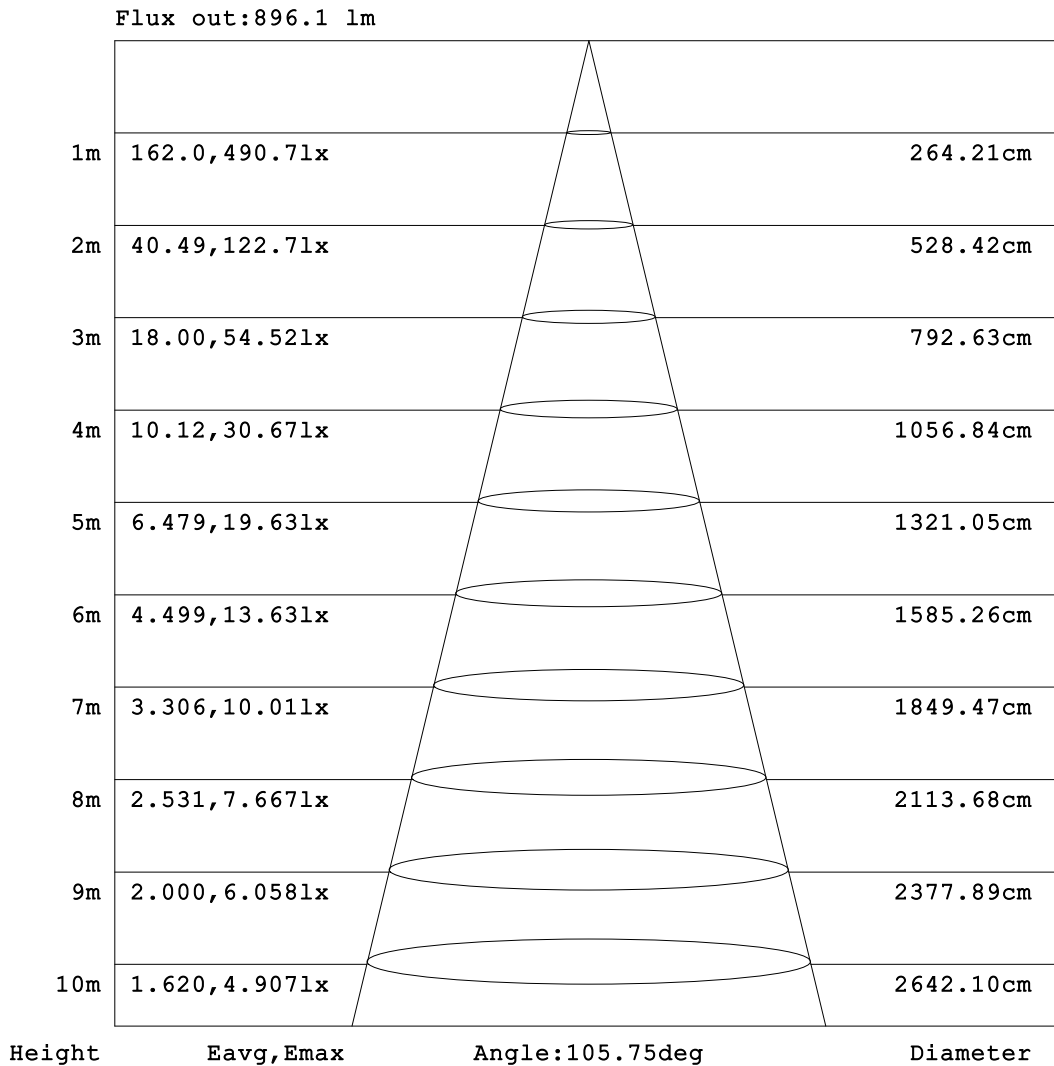
C Range: 0 - 360DEG  
 C Interval: 15.0DEG  
 Test Speed: HIGH  
 Temperature: 25.3°C  
 Operators: DAMIN  
 Test Date: 2024-11-12

γ Range: 0 - 90DEG  
 γ Interval: 1.0DEG  
 Test System: EVERFINE GO-2000B\_V1 SYSTEM V2.00.473  
 Humidity: 65.0%  
 Test Distance: 9.401m [K=1.0000]  
 Remarks:



**AAI Figure**

Test:U:230.39V I:0.1081A P:14.002W PF:0.5623 Freq:50.00Hz Lamp Flux:1303.78x1 lm		
NAME:	TYPE:	WEIGHT:
SPEC.: 白光	DIM.:	SERIAL No.:
MFR.: EVERFINE	SUR.:	Shielding Angle:



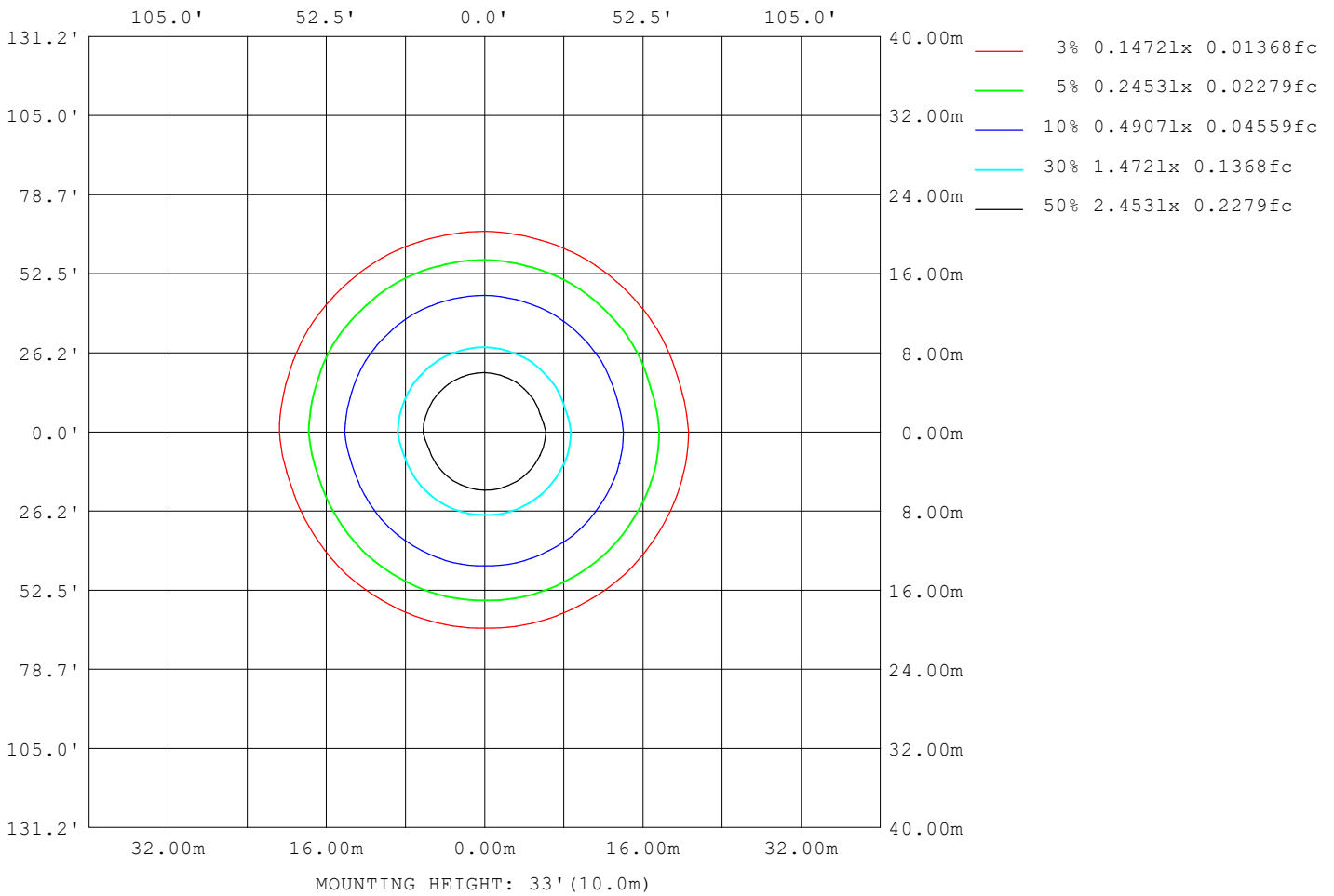
Note:The Curves indicate the illuminated area and the average illumination when the luminaire is at different distance.

C Range: 0 - 360DEG  
C Interval: 15.0DEG  
Test Speed: HIGH  
Temperature:25.3°C  
Operators:DAMIN  
Test Date:2024-11-12

γ Range: 0 - 90DEG  
γ Interval: 1.0DEG  
Test System:EVERFINE GO-2000B\_V1 SYSTEM V2.00.473  
Humidity:65.0%  
Test Distance:9.401m [K=1.0000]  
Remarks:

**ISOLUX DIAGRAM**

Test:U:230.39V I:0.1081A P:14.002W PF:0.5623 Freq:50.00Hz Lamp Flux:1303.78x1 lm		
NAME:	TYPE:	WEIGHT:
SPEC.: 白光	DIM.:	SERIAL No.:
MFR.: EVERFINE	SUR.:	Shielding Angle:



C Range: 0 - 360DEG  
 C Interval: 15.0DEG  
 Test Speed: HIGH  
 Temperature:25.3°C  
 Operators:DAMIN  
 Test Date:2024-11-12

γ Range: 0 - 90DEG  
 γ Interval: 1.0DEG  
 Test System:EVERFINE GO-2000B\_V1 SYSTEM V2.00.473  
 Humidity:65.0%  
 Test Distance:9.401m [K=1.0000]  
 Remarks:

**LED Avg.L Report**

Test:U:230.39V I:0.1081A P:14.002W PF:0.5623 Freq:50.00Hz Lamp Flux:1303.78x1 lm		
NAME:	TYPE:	WEIGHT:
SPEC.: 白光	DIM.:	SERIAL No.:
MFR.: EVERFINE	SUR.:	Shielding Angle:

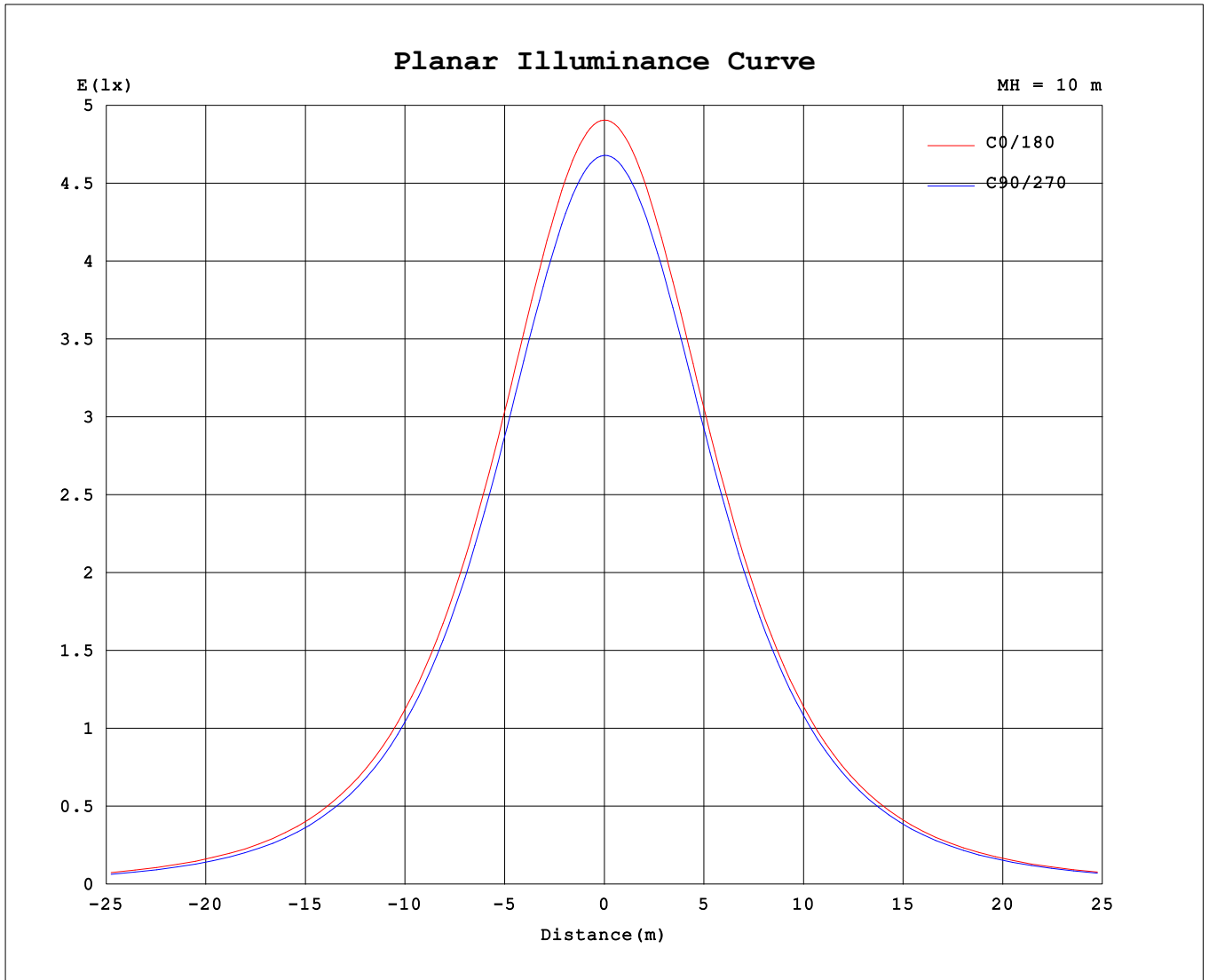
AvgL	cd/m2
L_0~180 (65) av	3908
L_0~180 (75) av	3441
L_0~180 (85) av	2317
L_90~270 (65) av	3671
L_90~270 (75) av	2989
L_90~270 (85) av	931
L_45 (65) av	3781
L_45 (75) av	3194
L_45 (85) av	1419

Standard: GB/T 29293-2012

C Range: 0 - 360DEG  
 C Interval: 15.0DEG  
 Test Speed: HIGH  
 Temperature:25.3°C  
 Operators:DAMIN  
 Test Date:2024-11-12

γ Range: 0 - 90DEG  
 γ Interval: 1.0DEG  
 Test System:EVERFINE GO-2000B\_V1 SYSTEM V2.00.473  
 Humidity:65.0%  
 Test Distance:9.401m [K=1.0000]  
 Remarks:

**Planar Illuminance Curve**



C Range: 0 - 360DEG  
 C Interval: 15.0DEG  
 Test Speed: HIGH  
 Temperature: 25.3°C  
 Operators: DAMIN  
 Test Date: 2024-11-12

γ Range: 0 - 90DEG  
 γ Interval: 1.0DEG  
 Test System: EVERFINE GO-2000B\_V1 SYSTEM V2.00.473  
 Humidity: 65.0%  
 Test Distance: 9.401m [K=1.0000]  
 Remarks:

LUMINOUS DISTRIBUTION INTENSITY DATA

Test:U:230.39V I:0.1081A P:14.002W PF:0.5623 Freq:50.00Hz Lamp Flux:1303.78x1 lm		
NAME:	TYPE:	WEIGHT:
SPEC.: 白光	DIM.:	SERIAL No.:
MFR.: EVERFINE	SUR.:	Shielding Angle:

Table--1

UNIT: cd

C (DEG) \ γ (DEG)	0	15	30	45	60	75	90	105	120	135	150	165	180	195	210	225	240	255	270
0	472	472	472	472	472	472	472	472	472	472	472	472	472	472	472	472	472	472	472
5	469	470	469	469	469	469	469	469	469	469	469	470	470	470	470	470	470	470	471
10	462	462	462	462	461	462	461	462	461	462	462	463	463	463	464	464	464	464	464
15	450	451	450	450	449	449	449	449	449	450	450	451	452	452	453	453	454	453	453
20	435	435	434	434	433	433	433	433	433	434	434	436	437	437	438	438	439	438	438
25	415	416	414	415	413	413	412	413	413	414	415	416	418	418	420	419	420	419	419
30	392	393	391	391	389	389	388	389	389	391	391	393	395	395	397	397	398	396	397
35	366	367	364	365	362	363	360	363	362	365	365	368	369	369	372	371	372	370	370
40	337	339	335	336	332	333	330	332	332	335	336	340	342	341	344	342	344	340	341
45	305	308	304	304	300	300	297	299	299	303	304	308	311	309	313	310	312	308	309
50	272	274	270	269	265	265	262	264	264	269	270	275	277	276	279	276	277	274	275
55	237	238	234	233	228	228	225	228	228	233	234	239	242	241	243	240	241	237	238
60	200	201	196	195	191	190	188	190	190	195	197	202	205	204	206	203	203	200	200
65	163	163	159	156	152	151	149	151	152	156	159	164	167	167	168	165	164	162	161
70	125	124	120	117	113	112	110	112	113	118	121	126	129	128	129	126	125	122	122
75	87.1	86.2	82.0	79.3	74.9	73.6	71.9	73.7	75.2	79.6	83.0	88.0	91.0	90.3	90.3	87.4	86.0	83.2	82.8
80	51.4	50.3	45.9	43.0	38.9	37.5	35.9	37.5	39.1	43.1	46.6	51.9	54.9	54.1	53.2	50.0	48.3	45.7	45.3
85	19.1	17.6	13.5	10.3	7.19	5.92	5.13	6.10	7.20	10.2	13.6	18.1	21.3	20.4	18.3	15.0	13.4	11.4	11.1
90	1.07	1.13	1.18	1.07	1.07	1.06	1.04	1.10	1.19	1.06	1.13	1.13	1.16	1.20	1.14	1.12	1.20	1.20	1.11

C Range: 0 - 360DEG	γ Range: 0 - 90DEG
C Interval: 15.0DEG	γ Interval: 1.0DEG
Test Speed: HIGH	Test System:EVERFINE GO-2000B_V1 SYSTEM V2.00.473
Temperature:25.3℃	Humidity:65.0%
Operators:DAMIN	Test Distance:9.401m [K=1.0000]
Test Date:2024-11-12	Remarks:

LUMINOUS DISTRIBUTION INTENSITY DATA

Test:U:230.39V I:0.1081A P:14.002W PF:0.5623 Freq:50.00Hz Lamp Flux:1303.78x1 lm		
NAME:	TYPE:	WEIGHT:
SPEC.: 白光	DIM.:	SERIAL No.:
MFR.: EVERFINE	SUR.:	Shielding Angle:

Table--2

UNIT: cd

C (DEG)\ γ (DEG)	285	300	315	330	345												
0	472	472	472	472	472												
5	470	470	470	470	470												
10	464	464	463	463	463												
15	453	453	452	452	451												
20	437	437	436	436	436												
25	418	418	417	417	416												
30	395	395	394	394	393												
35	369	369	368	368	367												
40	339	340	338	340	338												
45	306	308	307	308	307												
50	272	274	272	275	273												
55	236	238	236	239	238												
60	198	200	199	202	201												
65	160	161	161	163	163												
70	121	122	123	125	125												
75	82.0	83.6	84.5	86.9	87.4												
80	44.9	46.8	48.1	50.6	51.6												
85	11.1	12.5	14.0	16.7	18.5												
90	1.14	1.14	1.14	1.26	1.28												

C Range: 0 - 360DEG	γ Range: 0 - 90DEG
C Interval: 15.0DEG	γ Interval: 1.0DEG
Test Speed: HIGH	Test System:EVERFINE GO-2000B_V1 SYSTEM V2.00.473
Temperature:25.3℃	Humidity:65.0%
Operators:DAMIN	Test Distance:9.401m [K=1.0000]
Test Date:2024-11-12	Remarks: