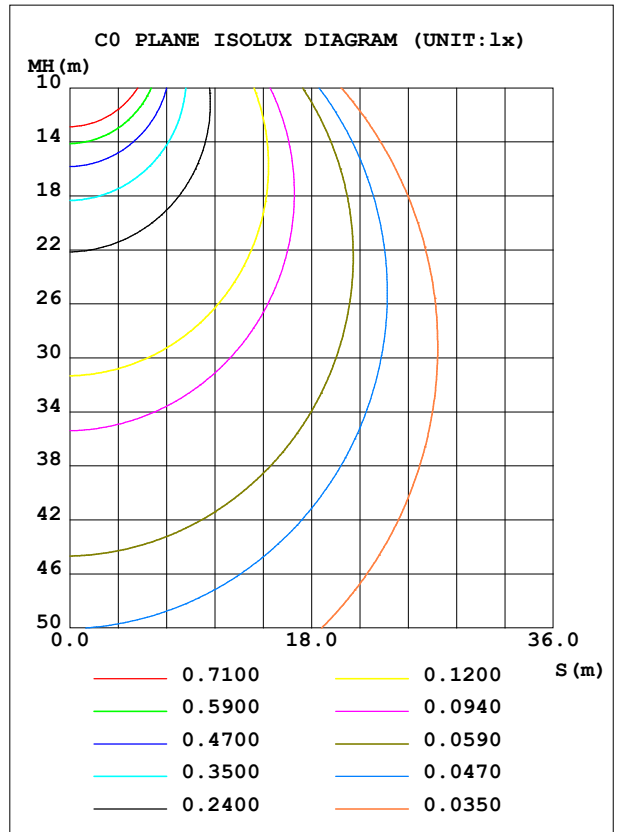
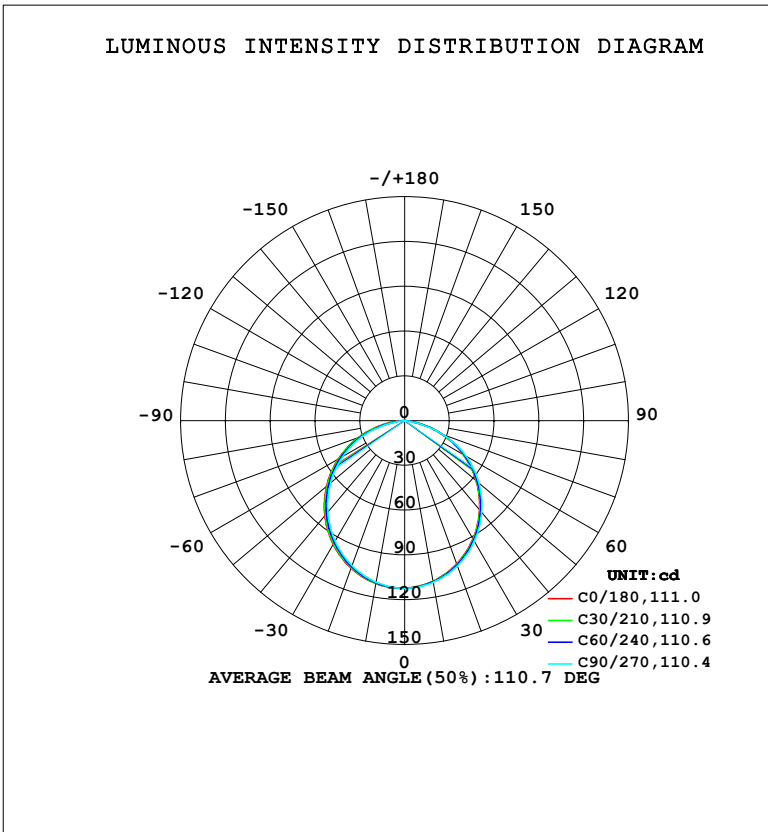


LUMINAIRE PHOTOMETRIC TEST REPORT

Test:U:220.33V I:0.0414A P:5.0636W PF:0.5547 Freq:50.00Hz Lamp Flux:308.605x1 lm		
NAME:	TYPE:	WEIGHT:
SPEC.:	DIM.:	SERIAL No.:
MFR.: EVERFINE	SUR.:	Shielding Angle:

DATA OF LAMP		PHOTOMETRIC DATA				Eff: 60.95 lm/W
MODEL	P7	I _{max} (cd)	112.3	S/MH (C0/180)	1.27	
NOMINAL POWER (W)	5	LOR (%)	100.0	S/MH (C90/270)	1.24	
RATED VOLTAGE (V)	220	TOTAL FLUX (lm)	308.61	η UP, DN (C0-180)	0.0, 49.7	
NOMINAL FLUX (lm)	308.605	CIE CLASS	DIRECT	η UP, DN (C180-360)	0.0, 50.3	
LAMPS INSIDE	1	η up (%)	0.0	CIBSE SHR NOM	1.25	
TEST VOLTAGE (V)	219.5	η down (%)	100.0	CIBSE SHR MAX	1.35	



C Range: 0 - 360DEG
 C Interval: 15.0DEG
 Test Speed: HIGH
 Temperature: 25.3°C
 Operators: DAMIN
 Test Date: 2024-01-11

γ Range: 0 - 90DEG
 γ Interval: 1.0DEG
 Test System: EVERFINE GO-2000B_V1 SYSTEM V2.00.473
 Humidity: 65.0%
 Test Distance: 9.401m [K=1.0000]
 Remarks:

ZONAL FLUX DIAGRAM

ZONAL FLUX DIAGRAM:

γ	C0	C45	C90	C135	C180	C225	C270	C315	γ	Φ zone	Φ total	%lum, lamp
10	109.2	109.6	110.0	110.6	110.8	110.4	109.9	109.4	0- 10	10.61	10.61	3.44,3.44
20	102.1	102.8	103.5	104.7	105.2	104.3	103.4	102.4	10- 20	30.26	40.87	13.2,13.2
30	91.52	92.43	93.38	94.99	95.72	94.57	93.17	91.85	20- 30	45.57	86.44	28,28
40	78.12	79.14	80.28	82.27	83.25	81.84	80.11	78.47	30- 40	54.59	141.0	45.7,45.7
50	62.51	63.57	64.90	67.19	68.29	66.77	64.82	62.96	40- 50	56.33	197.4	64,64
60	45.11	46.16	47.63	50.15	51.35	49.78	47.68	45.64	50- 60	50.69	248.1	80.4,80.4
70	26.36	27.39	27.01	30.53	32.73	31.25	28.96	27.01	60- 70	38.15	286.2	92.7,92.7
80	8.594	6.975	5.120	8.865	14.03	9.756	7.407	8.298	70- 80	19.81	306.0	99.2,99.2
90	0.0918	0.0898	0.0791	0.0735	0.1378	0.1018	0.1034	0.1164	80- 90	2.592	308.6	100,100
100									90-100			
110									100-110			
120									110-120			
130									120-130			
140									130-140			
150									140-150			
160									150-160			
170									160-170			
180									170-180			
DEG	LUMINOUS INTENSITY:cd									UNIT:lm		

Conical surface Flux(90deg): 169.44 lm

%lum = 54.9%

%lamp = 54.9%

Conical surface Flux(130deg): 269.1 lm

%lum = 87.2%

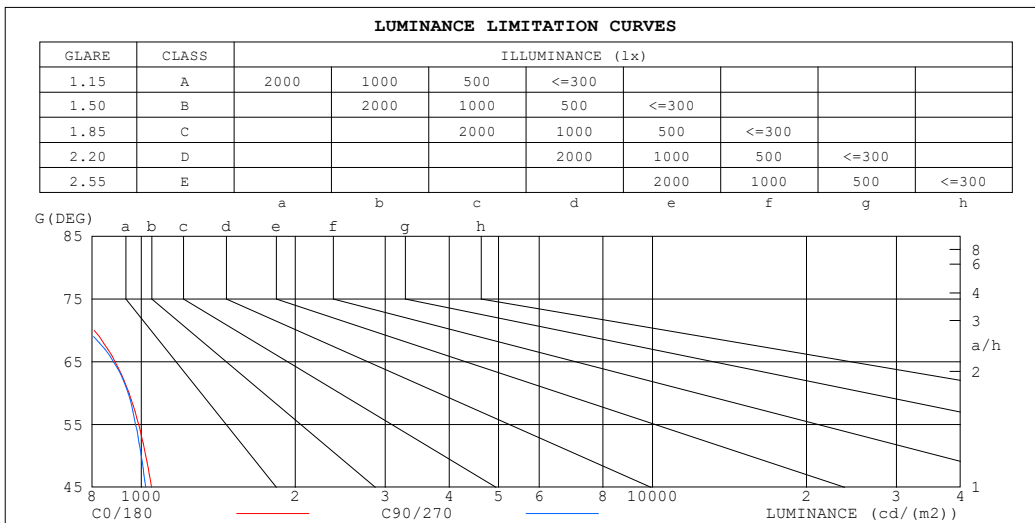
%lamp = 87.2%

C Range: 0 - 360DEG
 C Interval: 15.0DEG
 Test Speed: HIGH
 Temperature:25.3°C
 Operators:DAMIN
 Test Date:2024-01-11

γ Range: 0 - 90DEG
 γ Interval: 1.0DEG
 Test System:EVERFINE GO-2000B_V1 SYSTEM V2.00.473
 Humidity:65.0%
 Test Distance:9.401m [K=1.0000]
 Remarks:

LUMINANCE LIMITATION CURVES

Test:U:220.33V I:0.0414A P:5.0636W PF:0.5547 Freq:50.00Hz Lamp Flux:308.605x1 lm		
NAME:	TYPE:	WEIGHT:
SPEC.:	DIM.:	SERIAL No.:
MFR.: EVERFINE	SUR.:	Shielding Angle:



LUMINANCE cd/(m2)		
G (DEG)	C0/180	C90/270
85	159	19
80	519	292
75	695	604
70	809	782
65	888	882
60	946	943
55	988	975
50	1020	999
45	1047	1020

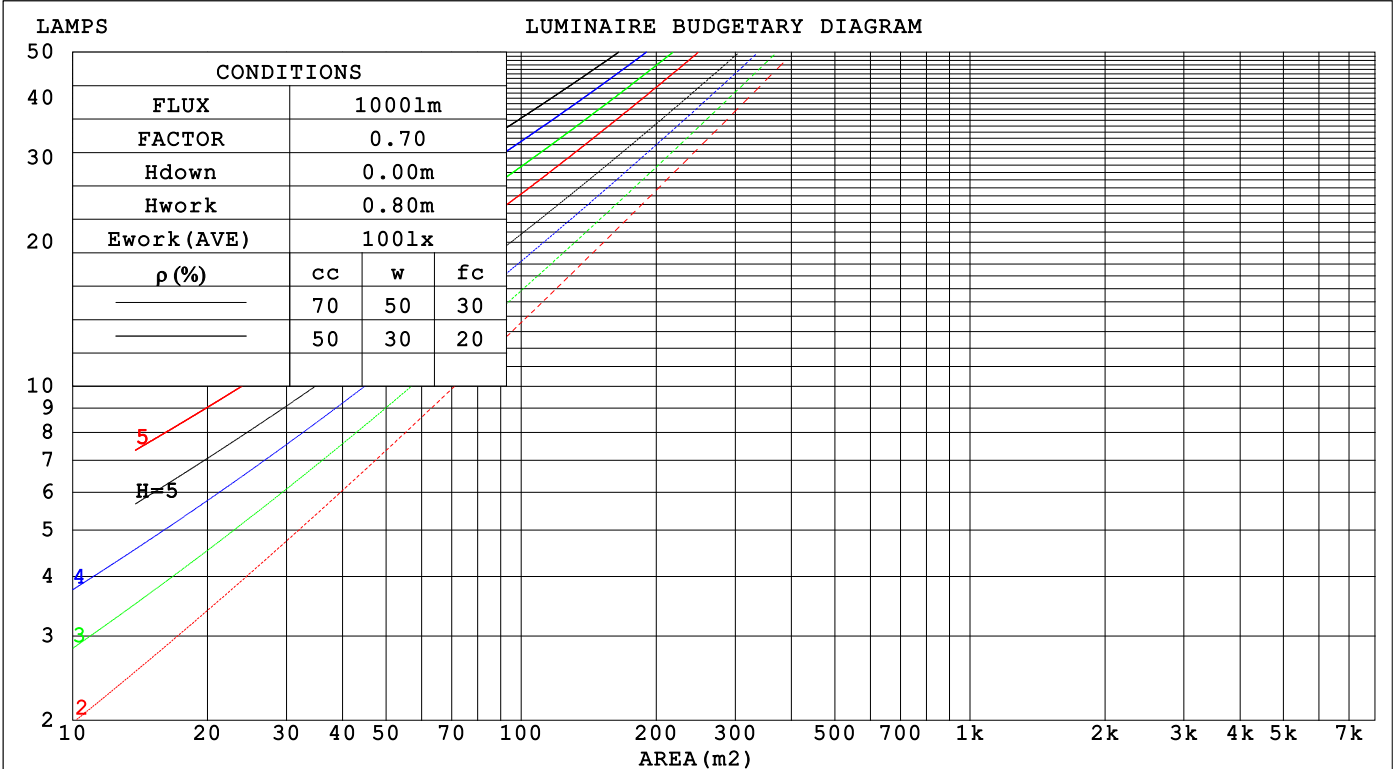
C Range: 0 - 360DEG
 C Interval: 15.0DEG
 Test Speed: HIGH
 Temperature:25.3°C
 Operators:DAMIN
 Test Date:2024-01-11

γ Range: 0 - 90DEG
 γ Interval: 1.0DEG
 Test System:EVERFINE GO-2000B_V1 SYSTEM V2.00.473
 Humidity:65.0%
 Test Distance:9.401m [K=1.0000]
 Remarks:

CU AND LUMINAIRE BUDGETARY ESTIMATE DIAGRAM

Test:U:220.33V I:0.0414A P:5.0636W PF:0.5547 Freq:50.00Hz Lamp Flux:308.605x1 lm		
NAME:	TYPE:	WEIGHT:
SPEC.:	DIM.:	SERIAL No.:
MFR.: EVERFINE	SUR.:	Shielding Angle:

ρcc	80%			70%			50%			30%			10%			0
ρw	50%	30%	10%	50%	30%	10%	50%	30%	10%	50%	30%	10%	50%	30%	10%	0
ρfc	20%			20%			20%			20%			20%			0
RCR	RCR:Room Cavity Ratio Coefficients of Utilization(CU)															
0.0	1.19	1.19	1.19	1.16	1.16	1.16	1.11	1.11	1.11	1.06	1.06	1.06	1.02	1.02	1.02	1.00
1.0	1.05	1.00	.97	1.02	.99	.95	.98	.95	.92	.94	.92	.89	.91	.89	.87	.85
2.0	.91	.85	.79	.89	.83	.78	.86	.81	.76	.83	.78	.74	.80	.76	.73	.71
3.0	.80	.72	.66	.79	.71	.65	.76	.69	.64	.73	.67	.63	.70	.66	.62	.60
4.0	.71	.62	.56	.70	.62	.55	.67	.60	.55	.65	.59	.54	.63	.57	.53	.51
5.0	.63	.55	.48	.62	.54	.48	.60	.53	.47	.58	.52	.47	.56	.51	.46	.44
6.0	.57	.48	.42	.56	.48	.42	.54	.47	.41	.53	.46	.41	.51	.45	.41	.38
7.0	.52	.43	.37	.51	.43	.37	.49	.42	.37	.48	.41	.36	.47	.41	.36	.34
8.0	.47	.39	.33	.47	.38	.33	.45	.38	.33	.44	.37	.32	.43	.37	.32	.30
9.0	.43	.35	.30	.43	.35	.30	.42	.34	.29	.41	.34	.29	.40	.34	.29	.27
10.0	.40	.32	.27	.40	.32	.27	.39	.32	.27	.38	.31	.27	.37	.31	.26	.25



C Range: 0 - 360DEG
 C Interval: 15.0DEG
 Test Speed: HIGH
 Temperature:25.3°C
 Operators:DAMIN
 Test Date:2024-01-11

γ Range: 0 - 90DEG
 γ Interval: 1.0DEG
 Test System:EVERFINE GO-2000B_V1 SYSTEM V2.00.473
 Humidity:65.0%
 Test Distance:9.401m [K=1.0000]
 Remarks:

WEC AND CCEC

Test:U:220.33V I:0.0414A P:5.0636W PF:0.5547 Freq:50.00Hz								
Lamp Flux:308.605x1 lm								
NAME:			TYPE:			WEIGHT:		
SPEC.:			DIM.:			SERIAL No.:		
MFR.: EVERFINE			SUR.:			Shielding Angle:		

ρ_{CC}	80%			70%			50%			30%			10%			0
ρ_w	50%	30%	10%	50%	30%	10%	50%	30%	10%	50%	30%	10%	50%	30%	10%	0
ρ_{fc}	20%			20%			20%			20%			20%			0
RCR	RCR:Room Cavity Ratio						Wall Exitance Coefficients (WEC)									
0.0																
1.0	.296	.168	.053	.289	.165	.052	.276	.158	.051	.264	.152	.049	.252	.146	.047	
2.0	.284	.155	.048	.277	.153	.047	.266	.148	.046	.255	.143	.045	.245	.139	.044	
3.0	.265	.141	.042	.259	.139	.042	.249	.135	.041	.239	.131	.040	.231	.128	.040	
4.0	.245	.128	.037	.241	.126	.037	.231	.123	.037	.223	.120	.036	.215	.117	.036	
5.0	.228	.116	.034	.223	.115	.033	.215	.112	.033	.208	.110	.033	.201	.107	.032	
6.0	.211	.106	.030	.208	.105	.030	.200	.103	.030	.194	.101	.030	.187	.099	.029	
7.0	.197	.097	.028	.194	.097	.028	.187	.095	.027	.181	.093	.027	.176	.091	.027	
8.0	.184	.090	.025	.181	.089	.025	.175	.088	.025	.170	.086	.025	.165	.085	.025	
9.0	.173	.084	.023	.170	.083	.023	.165	.082	.023	.160	.080	.023	.155	.079	.023	
10.0	.163	.078	.022	.160	.077	.022	.156	.076	.021	.151	.075	.021	.147	.074	.021	

ρ_{CC}	80%			70%			50%			30%			10%			0
ρ_w	50%	30%	10%	50%	30%	10%	50%	30%	10%	50%	30%	10%	50%	30%	10%	0
ρ_{fc}	20%			20%			20%			20%			20%			0
RCR	RCR:Room Cavity Ratio						Ceiling Cavity Exitance Coefficients (CCEC)									
0.0	.190	.190	.190	.163	.163	.163	.111	.111	.111	.064	.064	.064	.020	.020	.020	
1.0	.179	.156	.135	.153	.134	.117	.105	.092	.081	.060	.053	.047	.019	.017	.015	
2.0	.171	.132	.099	.147	.114	.086	.100	.079	.060	.058	.046	.035	.019	.015	.011	
3.0	.163	.114	.075	.140	.099	.065	.096	.068	.046	.056	.040	.027	.018	.013	.009	
4.0	.156	.101	.059	.134	.087	.051	.092	.061	.036	.053	.036	.021	.017	.012	.007	
5.0	.149	.090	.048	.128	.078	.041	.088	.055	.029	.051	.032	.017	.016	.010	.006	
6.0	.142	.082	.039	.122	.071	.034	.084	.050	.024	.049	.029	.014	.016	.010	.005	
7.0	.135	.075	.033	.116	.065	.029	.080	.046	.021	.047	.027	.012	.015	.009	.004	
8.0	.128	.069	.029	.111	.060	.025	.076	.042	.018	.044	.025	.011	.014	.008	.004	
9.0	.122	.064	.025	.105	.056	.022	.073	.039	.016	.043	.023	.009	.014	.008	.003	
10.0	.117	.060	.023	.101	.052	.020	.070	.037	.014	.041	.022	.008	.013	.007	.003	

C Range: 0 - 360DEG
 C Interval: 15.0DEG
 Test Speed: HIGH
 Temperature:25.3°C
 Operators:DAMIN
 Test Date:2024-01-11

γ Range: 0 - 90DEG
 γ Interval: 1.0DEG
 Test System:EVERFINE GO-2000B_V1 SYSTEM V2.00.473
 Humidity:65.0%
 Test Distance:9.401m [K=1.0000]
 Remarks:

UGR(Unified Glare Rating) Table

Test:U:220.33V I:0.0414A P:5.0636W PF:0.5547 Freq:50.00Hz										
Lamp Flux:308.605x1 lm										
NAME:			TYPE:				WEIGHT:			
SPEC.:			DIM.:				SERIAL No.:			
MFR.: EVERFINE			SUR.:				Shielding Angle:			
ceiling/cavity	0.7	0.7	0.5	0.5	0.3	0.7	0.7	0.5	0.5	0.3
walls	0.5	0.3	0.5	0.3	0.3	0.5	0.3	0.5	0.3	0.3
working plane	0.2	0.2	0.2	0.2	0.2	0.2	0.2	0.2	0.2	0.2
Room dimensions	Viewed crosswise					Viewed endwise				
x = 2H y = 2H	16.9	18.4	17.1	18.6	18.8	16.8	18.3	17.1	18.5	18.7
3H	18.2	19.6	18.5	19.9	20.1	18.2	19.6	18.5	19.8	20.0
4H	18.7	20.1	19.0	20.3	20.6	18.6	19.9	18.9	20.1	20.4
6H	19.0	20.2	19.3	20.5	20.8	18.7	19.9	19.0	20.2	20.5
8H	19.0	20.2	19.4	20.5	20.8	18.6	19.8	19.0	20.1	20.4
12H	19.0	20.2	19.3	20.4	20.7	18.6	19.7	18.9	20.0	20.3
4H 2H	17.4	18.7	17.7	19.0	19.2	17.4	18.7	17.7	19.0	19.2
3H	19.0	20.1	19.3	20.4	20.7	18.9	20.1	19.3	20.4	20.7
4H	19.6	20.6	19.9	20.9	21.3	19.4	20.4	19.8	20.8	21.1
6H	19.9	20.9	20.3	21.2	21.6	19.6	20.5	20.0	20.8	21.2
8H	20.0	20.8	20.4	21.2	21.6	19.5	20.4	19.9	20.8	21.1
12H	20.0	20.8	20.4	21.1	21.5	19.5	20.3	19.9	20.7	21.1
8H 4H	19.7	20.6	20.1	21.0	21.3	19.6	20.4	20.0	20.8	21.2
6H	20.2	20.9	20.6	21.3	21.7	19.8	20.5	20.2	20.9	21.3
8H	20.3	20.9	20.7	21.3	21.8	19.8	20.4	20.2	20.8	21.3
12H	20.3	20.8	20.7	21.2	21.7	19.7	20.3	20.2	20.7	21.2
12H 4H	19.7	20.5	20.1	20.9	21.3	19.6	20.4	20.0	20.7	21.1
6H	20.2	20.8	20.6	21.2	21.7	19.8	20.4	20.2	20.8	21.3
8H	20.2	20.8	20.7	21.2	21.7	19.8	20.3	20.2	20.8	21.2
Variations with the observer position at spacings(CIE Pub.117):										
S = 1.0H	+ 0.2 / - 0.2					+ 0.2 / - 0.3				
1.5H	+ 0.2 / - 0.3					+ 0.2 / - 0.4				
2.0H	+ 0.3 / - 0.3					+ 0.3 / - 0.3				

CIE Pub.117, 308.6 lm Total Lamp Luminous Flux Correct (8log(F/F0) = -4.1)
 Area: 0.1 m2

C Range: 0 - 360DEG
 C Interval: 15.0DEG
 Test Speed: HIGH
 Temperature:25.3°C
 Operators:DAMIN
 Test Date:2024-01-11

γ Range: 0 - 90DEG
 γ Interval: 1.0DEG
 Test System:EVERFINE GO-2000B_V1 SYSTEM V2.00.473
 Humidity:65.0%
 Test Distance:9.401m [K=1.0000]
 Remarks:

UTILIZATION FACTORS TABLE

Test:U:220.33V I:0.0414A P:5.0636W PF:0.5547 Freq:50.00Hz Lamp Flux:308.605x1 lm		
NAME:	TYPE:	WEIGHT:
SPEC.:	DIM.:	SERIAL No.:
MFR.: EVERFINE	SUR.:	Shielding Angle:

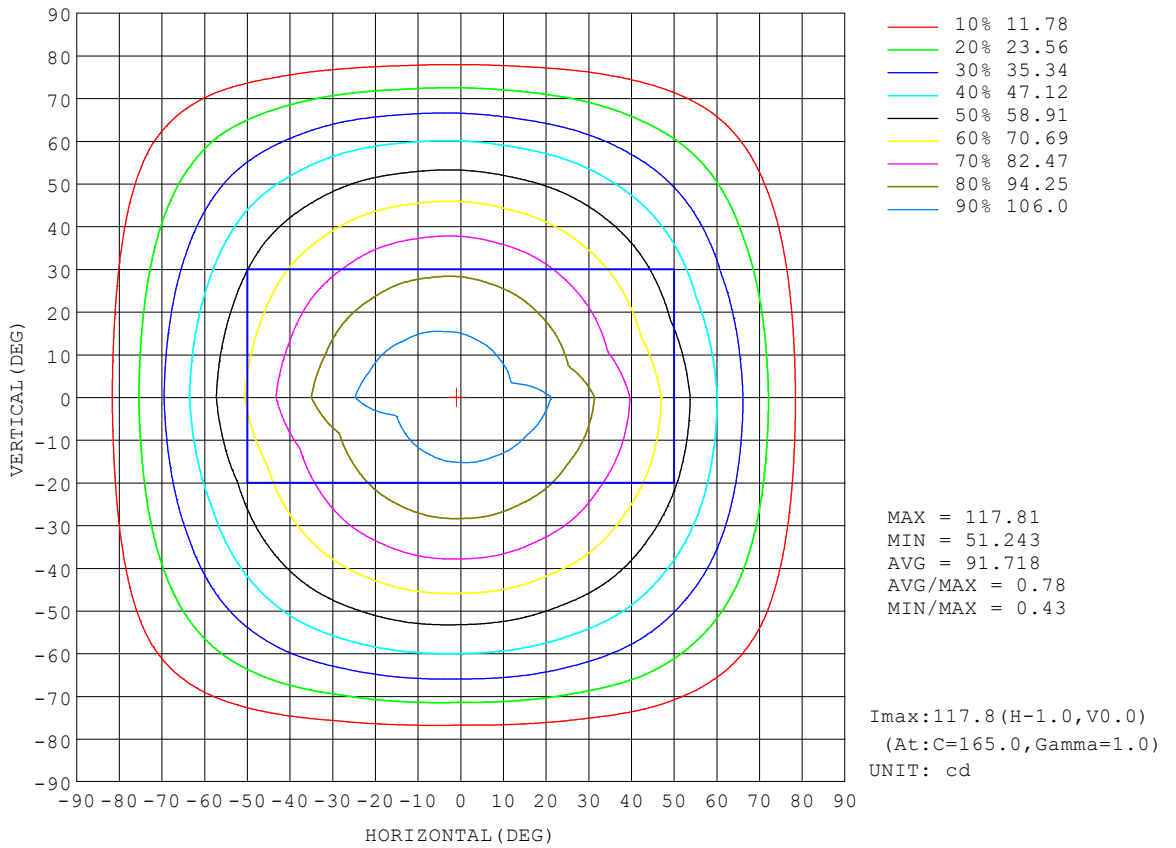
REFLECTANCE										
Ceiling	0.8	0.8	0.8	0.7	0.7	0.7	0.5	0.5	0.5	0
Walls	0.7	0.5	0.3	0.7	0.5	0.3	0.7	0.5	0.3	0
Working plane	0.2	0.2	0.2	0.2	0.2	0.2	0.2	0.2	0.2	0
ROOM INDEX	UTILIZATION FACTORS (PERCENT) $k(RI) \times RCR = 5$									
k = 0.60	58	47	40	57	46	40	56	46	39	33
0.80	68	57	49	67	56	49	65	55	49	42
1.00	77	66	59	76	65	58	73	67	58	51
1.25	84	74	66	82	73	66	80	71	65	58
1.50	89	79	72	87	78	72	84	76	71	63
2.00	96	87	81	94	86	80	90	84	79	71
2.50	100	92	86	98	91	85	94	88	83	75
3.00	103	96	91	101	95	90	97	92	88	79
4.00	107	101	97	104	100	96	100	96	93	84
5.00	109	105	101	107	103	99	102	99	96	87
ROOM INDEX	UF(total)									Direct
According to DIN EN 13032-2 2004			Suspended				SHRNOM = 1.25			

C Range: 0 - 360DEG
 C Interval: 15.0DEG
 Test Speed: HIGH
 Temperature:25.3°C
 Operators:DAMIN
 Test Date:2024-01-11

γ Range: 0 - 90DEG
 γ Interval: 1.0DEG
 Test System:EVERFINE GO-2000B_V1 SYSTEM V2.00.473
 Humidity:65.0%
 Test Distance:9.401m [K=1.0000]
 Remarks:

ISOCANDELA DIAGRAM

Test:U:220.33V I:0.0414A P:5.0636W PF:0.5547 Freq:50.00Hz Lamp Flux:308.605x1 lm		
NAME:	TYPE:	WEIGHT:
SPEC.:	DIM.:	SERIAL No.:
MFR.: EVERFINE	SUR.:	Shielding Angle:

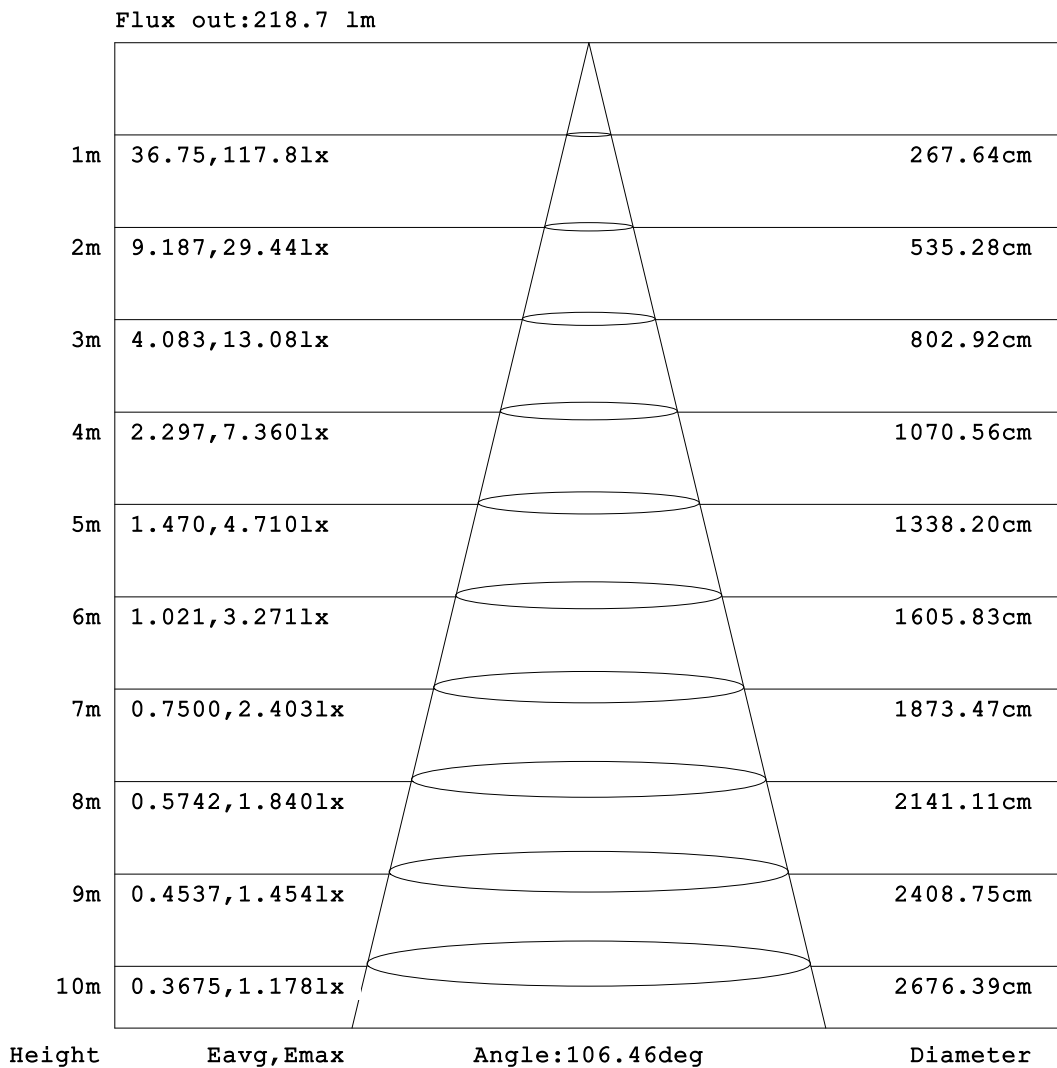


C Range: 0 - 360DEG
 C Interval: 15.0DEG
 Test Speed: HIGH
 Temperature:25.3°C
 Operators:DAMIN
 Test Date:2024-01-11

γ Range: 0 - 90DEG
 γ Interval: 1.0DEG
 Test System:EVERFINE GO-2000B_V1 SYSTEM V2.00.473
 Humidity:65.0%
 Test Distance:9.401m [K=1.0000]
 Remarks:

AAI Figure

Test:U:220.33V I:0.0414A P:5.0636W PF:0.5547 Freq:50.00Hz Lamp Flux:308.605x1 lm		
NAME:	TYPE:	WEIGHT:
SPEC.:	DIM.:	SERIAL No.:
MFR.: EVERFINE	SUR.:	Shielding Angle:



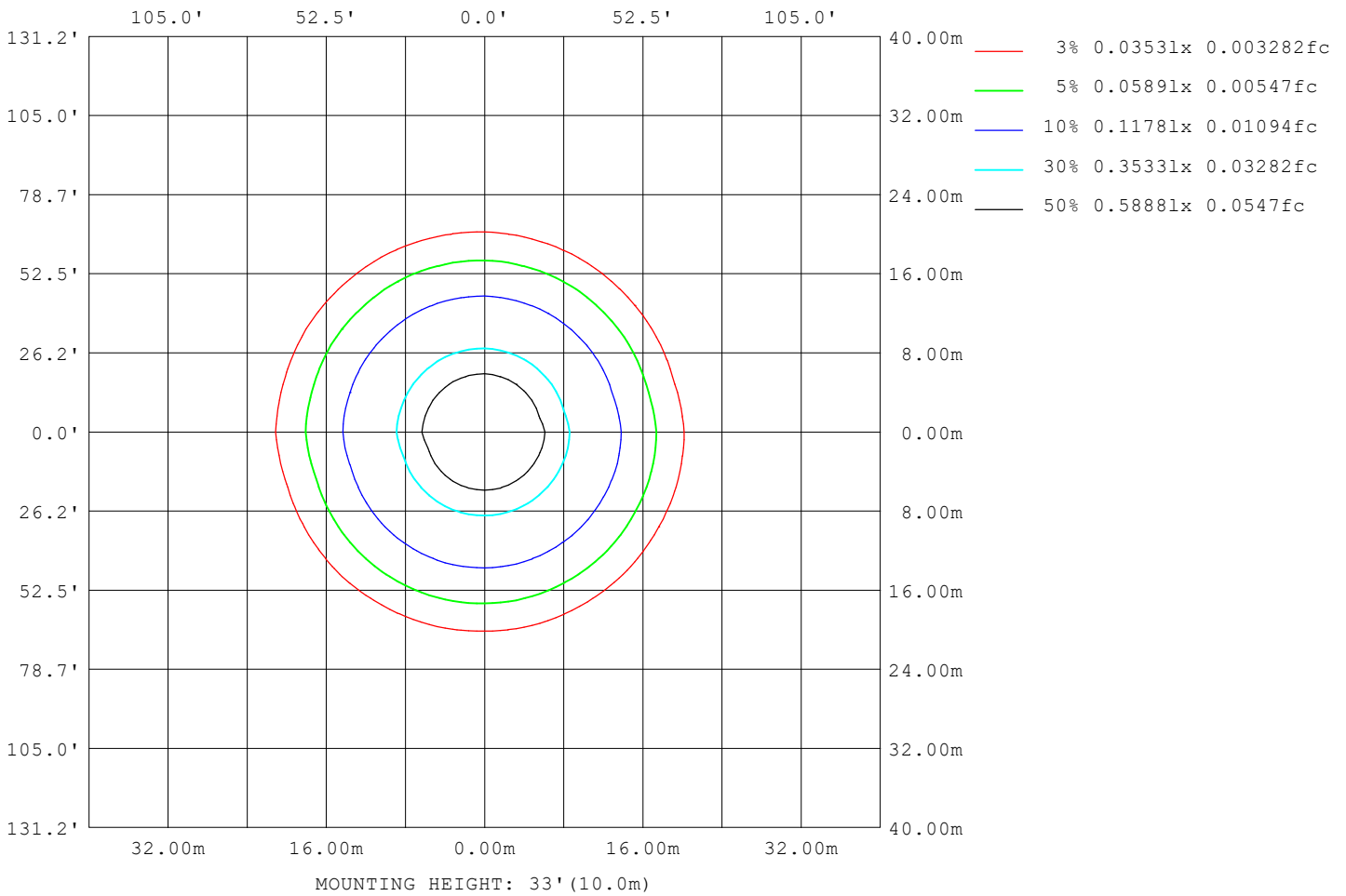
Note: The Curves indicate the illuminated area and the average illumination when the luminaire is at different distance.

C Range: 0 - 360DEG
 C Interval: 15.0DEG
 Test Speed: HIGH
 Temperature: 25.3°C
 Operators: DAMIN
 Test Date: 2024-01-11

γ Range: 0 - 90DEG
 γ Interval: 1.0DEG
 Test System: EVERFINE GO-2000B_V1 SYSTEM V2.00.473
 Humidity: 65.0%
 Test Distance: 9.401m [K=1.0000]
 Remarks:

ISOLUX DIAGRAM

Test:U:220.33V I:0.0414A P:5.0636W PF:0.5547 Freq:50.00Hz Lamp Flux:308.605x1 lm		
NAME:	TYPE:	WEIGHT:
SPEC.:	DIM.:	SERIAL No.:
MFR.: EVERFINE	SUR.:	Shielding Angle:



C Range: 0 - 360DEG
 C Interval: 15.0DEG
 Test Speed: HIGH
 Temperature:25.3°C
 Operators:DAMIN
 Test Date:2024-01-11

γ Range: 0 - 90DEG
 γ Interval: 1.0DEG
 Test System:EVERFINE GO-2000B_V1 SYSTEM V2.00.473
 Humidity:65.0%
 Test Distance:9.401m [K=1.0000]
 Remarks:

LED Avg.L Report

Test:U:220.33V I:0.0414A P:5.0636W PF:0.5547 Freq:50.00Hz Lamp Flux:308.605x1 lm		
NAME:	TYPE:	WEIGHT:
SPEC.:	DIM.:	SERIAL No.:
MFR.: EVERFINE	SUR.:	Shielding Angle:

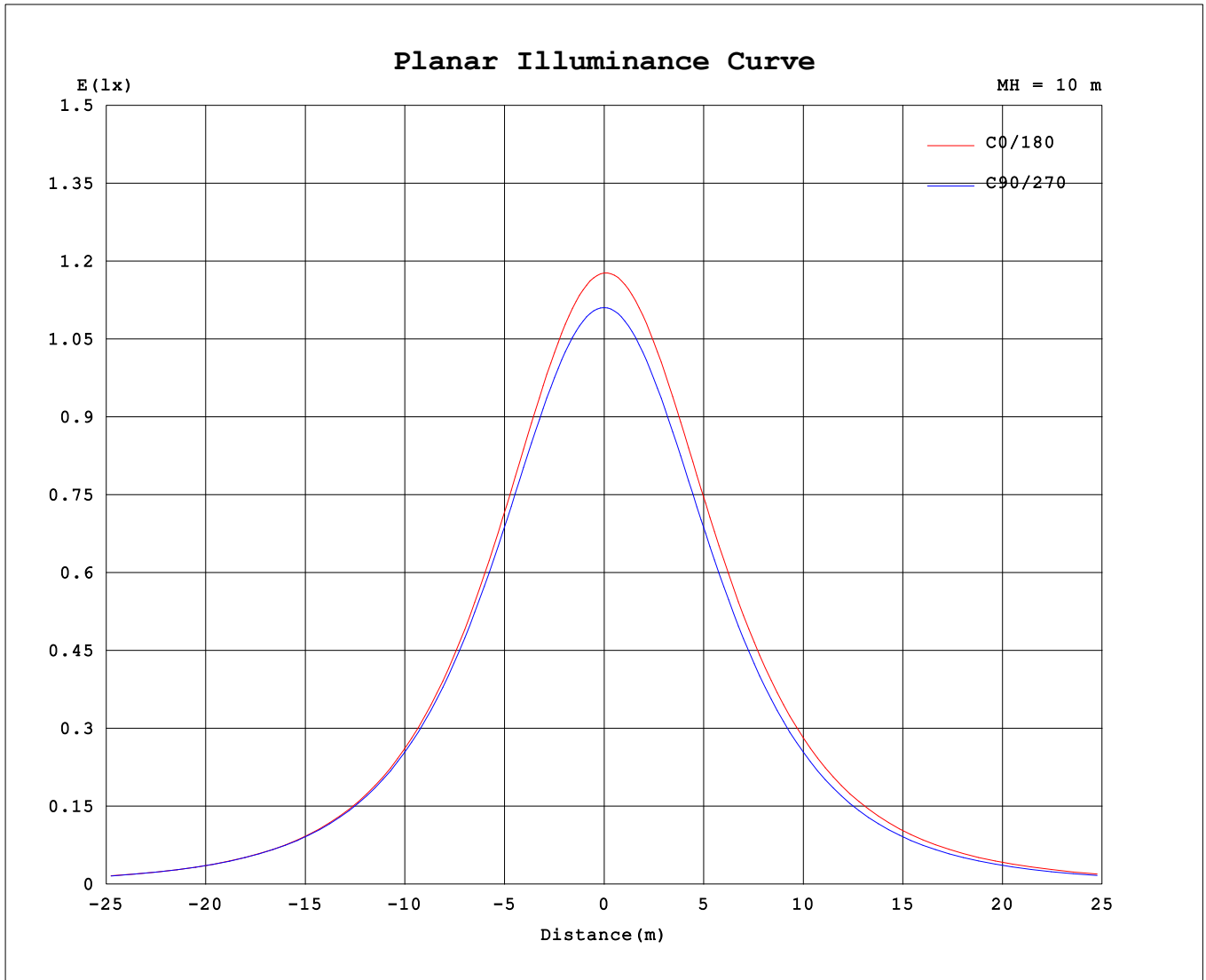
AvgL	cd/m2
L_0~180 (65) av	923
L_0~180 (75) av	780
L_0~180 (85) av	405
L_90~270 (65) av	902
L_90~270 (75) av	660
L_90~270 (85) av	21
L_45 (65) av	915
L_45 (75) av	731
L_45 (85) av	40

Standard: GB/T 29293-2012

C Range: 0 - 360DEG
 C Interval: 15.0DEG
 Test Speed: HIGH
 Temperature:25.3°C
 Operators:DAMIN
 Test Date:2024-01-11

γ Range: 0 - 90DEG
 γ Interval: 1.0DEG
 Test System:EVERFINE GO-2000B_V1 SYSTEM V2.00.473
 Humidity:65.0%
 Test Distance:9.401m [K=1.0000]
 Remarks:

Planar Illuminance Curve



C Range: 0 - 360DEG
 C Interval: 15.0DEG
 Test Speed: HIGH
 Temperature: 25.3°C
 Operators: DAMIN
 Test Date: 2024-01-11

γ Range: 0 - 90DEG
 γ Interval: 1.0DEG
 Test System: EVERFINE GO-2000B_V1 SYSTEM V2.00.473
 Humidity: 65.0%
 Test Distance: 9.401m [K=1.0000]
 Remarks:

