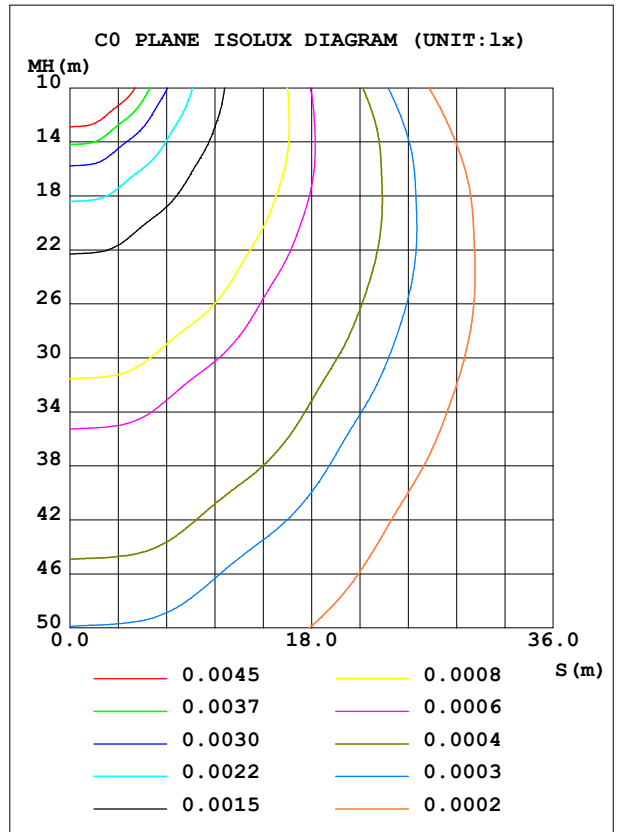
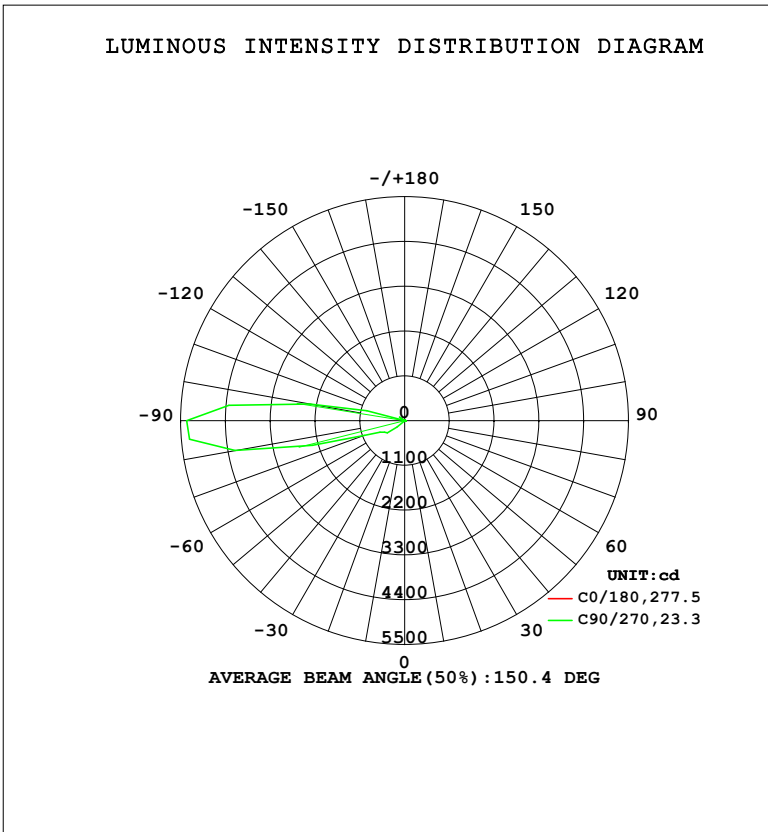


LUMINAIRE PHOTOMETRIC TEST REPORT

Test:U:220.35V I:0.0801A P:10.340W PF:0.5857 Freq:50.00Hz Lamp Flux:857.166x1 lm		
NAME: 壁灯	TYPE: W系列	WEIGHT:
SPEC.:	DIM.:	SERIAL No.:
MFR.: EVERFINE	SUR.: 156.5mm	Shielding Angle:

DATA OF LAMP		PHOTOMETRIC DATA				Eff: 82.90 lm/W
MODEL	W08B	I _{max} (cd)	5354	S/MH (C0/180)	0.90	
NOMINAL POWER (W)	10	LOR (%)	100.0	S/MH (C90/270)	62.28	
RATED VOLTAGE (V)	220	TOTAL FLUX (lm)	857.17	η UP, DN (C0-180)	0.5, 0.5	
NOMINAL FLUX (lm)	857.166	CIE CLASS	SEMI-D.	η UP, DN (C180-360)	37.4, 61.6	
LAMPS INSIDE	1	η up (%)	37.9	CIBSE SHR NOM	0.00	
TEST VOLTAGE (V)	219.5	η down (%)	62.1	CIBSE SHR MAX	0.00	



C Range: 0 - 360DEG
 C Interval: 22.5DEG
 Test Speed: HIGH
 Temperature: 25.3°C
 Operators: DAMIN
 Test Date: 2023-11-16

γ Range: 0 - 180DEG
 γ Interval: 5.0DEG
 Test System: EVERFINE GO-2000B_V1 SYSTEM V2.00.473
 Humidity: 65.0%
 Test Distance: 9.401m [K=1.0000]
 Remarks:

ZONAL FLUX DIAGRAM

ZONAL FLUX DIAGRAM:

γ	C0	C45	C90	C135	C180	C225	C270	C315	γ	Φ zone	Φ total	%lum,lamp
10	0.2704	0.1417	0.0986	0.0981	0.2368	0.7629	1.313	0.9373	0- 10	0.0340	0.0340	0.00,0.00
20	0.2436	0.1214	0.1182	0.0981	0.1966	1.309	2.785	1.704	10- 20	0.1523	0.1862	0.02,0.02
30	0.2190	0.1214	0.2069	0.0981	0.1720	2.059	10.68	2.830	20- 30	0.4726	0.6588	0.08,0.08
40	0.2056	0.1550	0.7384	0.1515	0.1520	4.640	22.07	6.884	30- 40	1.443	2.101	0.25,0.25
50	0.1967	0.3505	3.270	0.3653	0.1520	8.775	251.9	12.83	40- 50	4.895	6.996	0.82,0.82
60	0.1922	0.6473	6.683	0.6686	0.1520	12.00	579.1	17.57	50- 60	31.68	38.68	4.51,4.51
70	0.1899	0.9577	8.706	1.159	0.1520	14.44	1057	21.75	60- 70	70.88	109.6	12.8,12.8
80	0.1855	1.228	9.585	1.765	0.1520	15.65	4236	23.79	70- 80	153.5	263.1	30.7,30.7
90	0.1832	1.329	9.714	2.132	0.1520	15.38	5354	23.59	80- 90	268.9	532.0	62.1,62.1
100	0.1810	1.396	8.217	2.425	0.1475	13.60	2377	20.99	90-100	227.1	759.0	88.6,88.6
110	0.1721	1.417	7.832	2.408	0.1363	5.841	65.43	8.168	100-110	81.72	840.8	98.1,98.1
120	0.1565	1.012	5.527	1.981	0.1274	2.905	10.60	4.983	110-120	8.530	849.3	99.1,99.1
130	0.1475	0.6888	4.041	1.241	0.1184	4.646	14.86	7.113	120-130	4.884	854.2	99.7,99.7
140	0.1408	0.3983	2.520	0.7854	0.1095	2.177	13.86	3.216	130-140	1.915	856.1	99.9,99.9
150	0.1385	0.2565	1.155	0.4016	0.0983	0.4468	5.160	0.8038	140-150	0.8403	856.9	100,100
160	0.1385	0.1621	0.4543	0.1697	0.0849	0.0675	1.714	0	150-160	0.1819	857.1	100,100
170	0.1385	0.0540	0.0200	0.0714	0.0827	0.0808	0.0695	0	160-170	0.0409	857.2	100,100
180	0.1028	0.0405	0	0	0.0827	0.0540	0	0	170-180	0.0083	857.2	100,100
DEG	LUMINOUS INTENSITY:cd									UNIT:lm		

Conical surface Flux(90deg): 3.4329 lm

%lum = 0.4%
 %lamp = 0.4%

Conical surface Flux(130deg): 69.955 lm

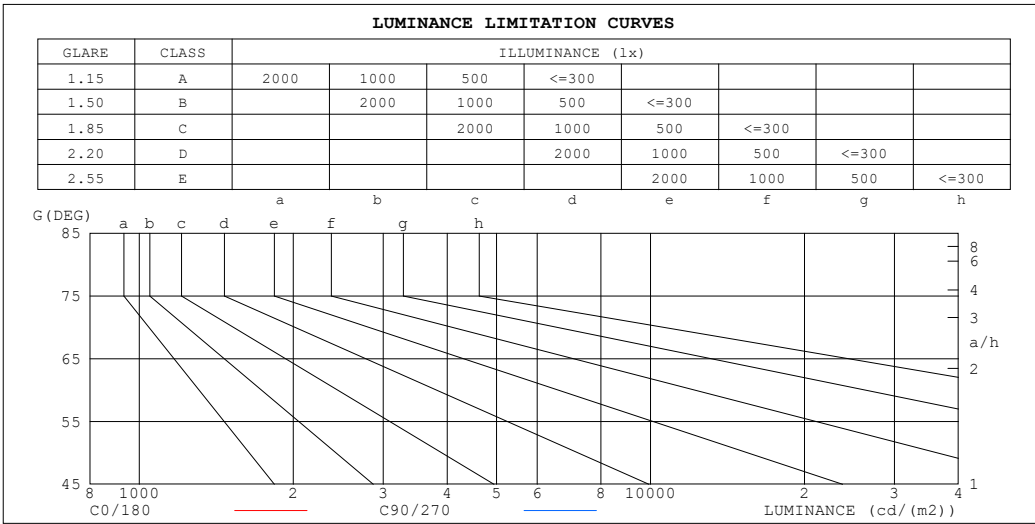
%lum = 8.2%
 %lamp = 8.2%

C Range: 0 - 360DEG
 C Interval: 22.5DEG
 Test Speed: HIGH
 Temperature:25.3°C
 Operators:DAMIN
 Test Date:2023-11-16

γ Range: 0 - 180DEG
 γ Interval: 5.0DEG
 Test System:EVERFINE GO-2000B_V1 SYSTEM V2.00.473
 Humidity:65.0%
 Test Distance:9.401m [K=1.0000]
 Remarks:

LUMINANCE LIMITATION CURVES

Test:U:220.35V I:0.0801A P:10.340W PF:0.5857 Freq:50.00Hz Lamp Flux:857.166x1 lm		
NAME: 壁灯	TYPE: W系列	WEIGHT:
SPEC.:	DIM.:	SERIAL No.:
MFR.: EVERFINE	SUR.: 156.5mm	Shielding Angle:



LUMINANCE cd/(m2)		
G (DEG)	C0/180	C90/270
85	23	277
80	12	138
75	8	89
70	6	63
65	5	47
60	4	33
55	4	22
50	3	13
45	3	6

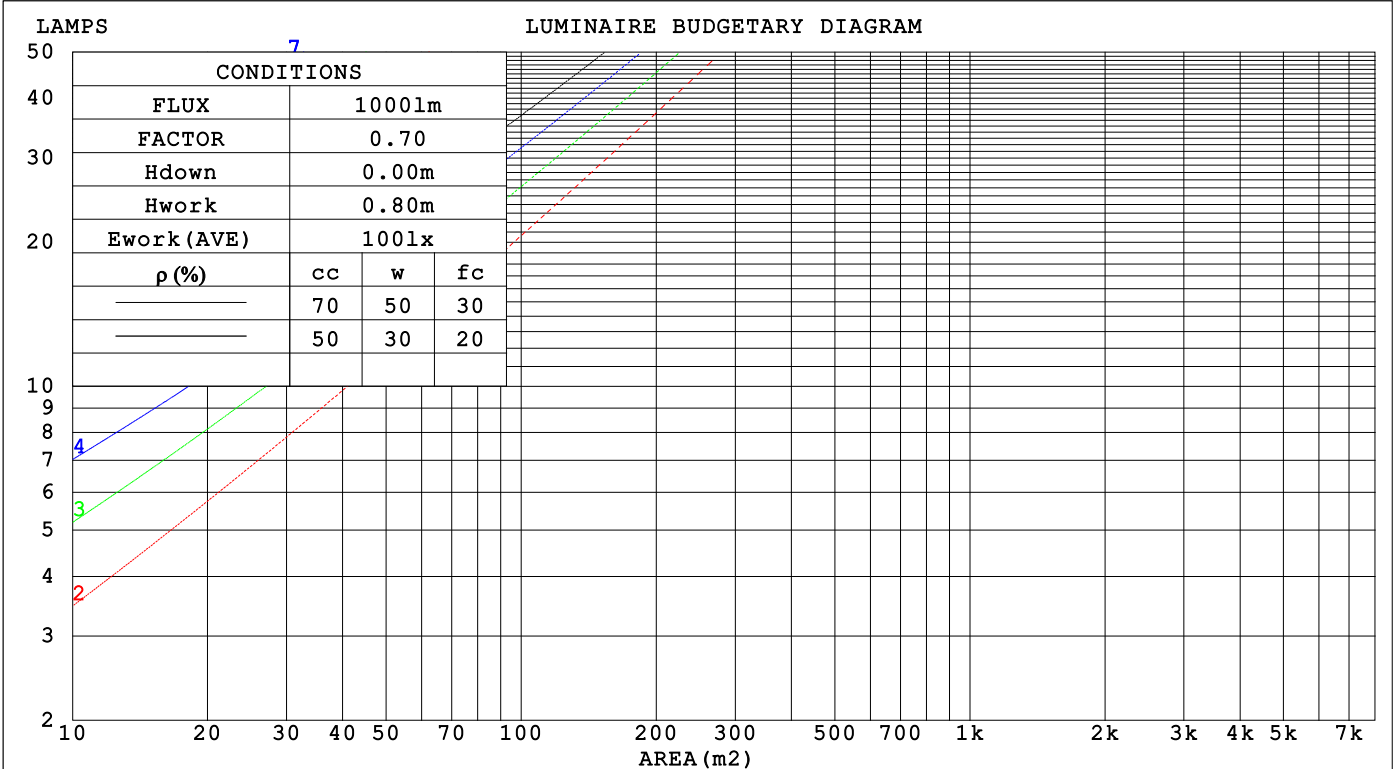
C Range: 0 - 360DEG
 C Interval: 22.5DEG
 Test Speed: HIGH
 Temperature: 25.3°C
 Operators: DAMIN
 Test Date: 2023-11-16

γ Range: 0 - 180DEG
 γ Interval: 5.0DEG
 Test System: EVERFINE GO-2000B_V1 SYSTEM V2.00.473
 Humidity: 65.0%
 Test Distance: 9.401m [K=1.0000]
 Remarks:

CU AND LUMINAIRE BUDGETARY ESTIMATE DIAGRAM

Test:U:220.35V I:0.0801A P:10.340W PF:0.5857 Freq:50.00Hz Lamp Flux:857.166x1 lm		
NAME: 壁灯	TYPE: W系列	WEIGHT:
SPEC.:	DIM.:	SERIAL No.:
MFR.: EVERFINE	SUR.: 156.5mm	Shielding Angle:

pcc	80%			70%			50%			30%			10%			0
pw	50%	30%	10%	50%	30%	10%	50%	30%	10%	50%	30%	10%	50%	30%	10%	0
pfc	20%			20%			20%			20%			20%			0
RCR	RCR:Room Cavity Ratio						Coefficients of Utilization(CU)									
0.0	1.10	1.10	1.10	1.03	1.03	1.03	.90	.90	.90	.78	.78	.78	.67	.67	.67	.62
1.0	.76	.66	.58	.70	.61	.53	.58	.51	.45	.47	.41	.36	.37	.33	.29	.23
2.0	.61	.49	.39	.55	.45	.36	.45	.37	.29	.36	.29	.23	.27	.22	.17	.12
3.0	.51	.39	.29	.46	.35	.27	.37	.28	.21	.29	.22	.16	.22	.16	.11	.06
4.0	.44	.32	.23	.40	.29	.21	.32	.23	.16	.25	.18	.12	.18	.13	.08	.04
5.0	.38	.27	.19	.35	.25	.17	.28	.20	.13	.22	.15	.09	.16	.10	.06	.02
6.0	.34	.23	.16	.31	.21	.14	.25	.17	.11	.20	.13	.08	.15	.09	.05	.01
7.0	.31	.20	.13	.28	.19	.12	.23	.15	.09	.18	.11	.06	.13	.08	.04	.01
8.0	.28	.18	.11	.25	.16	.10	.21	.13	.08	.16	.10	.06	.12	.07	.03	.01
9.0	.25	.16	.10	.23	.15	.09	.19	.12	.07	.15	.09	.05	.12	.07	.03	.00
10.0	.23	.14	.09	.21	.13	.08	.18	.11	.06	.14	.08	.04	.11	.06	.03	.00



C Range: 0 - 360DEG
 C Interval: 22.5DEG
 Test Speed: HIGH
 Temperature:25.3°C
 Operators:DAMIN
 Test Date:2023-11-16

γ Range: 0 - 180DEG
 γ Interval: 5.0DEG
 Test System:EVERFINE GO-2000B_V1 SYSTEM V2.00.473
 Humidity:65.0%
 Test Distance:9.401m [K=1.0000]
 Remarks:

WEC AND CCEC

Test:U:220.35V I:0.0801A P:10.340W PF:0.5857 Freq:50.00Hz								
Lamp Flux:857.166x1 lm								
NAME: 壁灯			TYPE: W系列			WEIGHT:		
SPEC.:			DIM.:			SERIAL No.:		
MFR.: EVERFINE			SUR.: 156.5mm			Shielding Angle:		

ρ _{CC}	80%			70%			50%			30%			10%			0
ρ _W	50%	30%	10%	50%	30%	10%	50%	30%	10%	50%	30%	10%	50%	30%	10%	0
ρ _{FC}	20%			20%			20%			20%			20%			0
RCR	RCR:Room Cavity Ratio						Wall Exitance Coefficients (WEC)									
0.0																
1.0	.673	.383	.121	.653	.373	.118	.617	.354	.113	.583	.336	.108	.552	.320	.103	
2.0	.489	.268	.082	.471	.260	.080	.438	.244	.076	.407	.228	.071	.379	.214	.068	
3.0	.394	.210	.063	.378	.202	.061	.347	.188	.057	.319	.175	.054	.293	.162	.050	
4.0	.332	.173	.051	.317	.166	.049	.290	.154	.046	.264	.142	.043	.240	.130	.040	
5.0	.289	.147	.043	.275	.141	.041	.250	.130	.038	.226	.119	.036	.204	.109	.033	
6.0	.256	.128	.037	.243	.123	.035	.220	.113	.033	.199	.103	.030	.178	.094	.028	
7.0	.230	.114	.032	.219	.109	.031	.197	.100	.029	.177	.091	.026	.159	.082	.024	
8.0	.209	.102	.029	.199	.098	.028	.179	.089	.026	.161	.081	.023	.143	.074	.021	
9.0	.192	.093	.026	.182	.089	.025	.164	.081	.023	.147	.074	.021	.131	.066	.019	
10.0	.177	.085	.024	.168	.081	.023	.152	.074	.021	.135	.067	.019	.120	.061	.017	

ρ _{CC}	80%			70%			50%			30%			10%			0
ρ _W	50%	30%	10%	50%	30%	10%	50%	30%	10%	50%	30%	10%	50%	30%	10%	0
ρ _{FC}	20%			20%			20%			20%			20%			0
RCR	RCR:Room Cavity Ratio						Ceiling Cavity Exitance Coefficients (CCEC)									
0.0	.480	.480	.480	.410	.410	.410	.280	.280	.280	.161	.161	.161	.051	.051	.051	
1.0	.497	.444	.397	.425	.381	.342	.291	.262	.236	.167	.152	.137	.054	.049	.044	
2.0	.492	.424	.367	.421	.365	.318	.289	.253	.222	.167	.147	.130	.053	.048	.042	
3.0	.483	.410	.352	.414	.354	.305	.284	.246	.214	.164	.144	.126	.053	.047	.041	
4.0	.474	.399	.342	.406	.345	.297	.279	.240	.209	.162	.141	.124	.052	.046	.041	
5.0	.464	.390	.336	.398	.338	.292	.274	.236	.206	.159	.138	.122	.051	.045	.040	
6.0	.455	.383	.331	.391	.332	.288	.270	.232	.204	.156	.137	.121	.050	.045	.040	
7.0	.446	.377	.328	.384	.326	.286	.265	.229	.202	.154	.135	.121	.050	.044	.040	
8.0	.438	.371	.325	.377	.322	.284	.261	.226	.201	.152	.133	.120	.049	.044	.040	
9.0	.431	.367	.323	.371	.318	.282	.257	.224	.200	.150	.132	.119	.049	.043	.040	
10.0	.424	.362	.321	.366	.315	.280	.254	.221	.199	.148	.131	.119	.048	.043	.039	

C Range: 0 - 360DEG
 C Interval: 22.5DEG
 Test Speed: HIGH
 Temperature:25.3°C
 Operators:DAMIN
 Test Date:2023-11-16

γ Range: 0 - 180DEG
 γ Interval: 5.0DEG
 Test System:EVERFINE GO-2000B_V1 SYSTEM V2.00.473
 Humidity:65.0%
 Test Distance:9.401m [K=1.0000]
 Remarks:

UGR(Unified Glare Rating) Table

Test:U:220.35V I:0.0801A P:10.340W PF:0.5857 Freq:50.00Hz										
Lamp Flux:857.166x1 lm										
NAME: 壁灯			TYPE: W系列				WEIGHT:			
SPEC.:			DIM.:				SERIAL No.:			
MFR.: EVERFINE			SUR.: 156.5mm				Shielding Angle:			
ceiling/cavity	0.7	0.7	0.5	0.5	0.3	0.7	0.7	0.5	0.5	0.3
walls	0.5	0.3	0.5	0.3	0.3	0.5	0.3	0.5	0.3	0.3
working plane	0.2	0.2	0.2	0.2	0.2	0.2	0.2	0.2	0.2	0.2
Room dimensions	Viewed crosswise					Viewed endwise				
x = 2H y = 2H	-29.6	-28.2	-28.9	-27.4	-26.4	-13.8	-12.4	-13.1	-11.6	-10.6
3H	-25.9	-24.6	-25.1	-23.7	-22.7	-8.3	-7.0	-7.6	-6.2	-5.1
4H	-23.6	-22.3	-22.8	-21.5	-20.4	-5.8	-4.5	-5.0	-3.7	-2.6
6H	-21.1	-19.9	-20.3	-19.0	-17.9	-3.2	-2.0	-2.4	-1.1	-0.0
8H	-19.7	-18.5	-18.9	-17.6	-16.5	-1.8	-0.6	-1.0	0.2	1.4
12H	-18.1	-17.0	-17.3	-16.1	-15.0	-0.3	0.8	0.5	1.7	2.8
4H 2H	-22.6	-21.3	-21.8	-20.5	-19.4	-13.9	-12.7	-13.2	-11.8	-10.8
3H	-21.6	-20.4	-20.7	-19.5	-18.4	-8.0	-6.8	-7.2	-5.9	-4.8
4H	-20.7	-19.6	-19.8	-18.7	-17.6	-5.1	-4.0	-4.2	-3.1	-1.9
6H	-19.3	-18.2	-18.4	-17.3	-16.2	-2.1	-1.1	-1.3	-0.2	1.0
8H	-18.2	-17.2	-17.3	-16.3	-15.1	-0.6	0.4	0.3	1.3	2.5
12H	-16.7	-15.8	-15.9	-14.9	-13.7	1.1	2.0	2.0	2.9	4.1
8H 4H	-14.9	-13.9	-14.0	-13.0	-11.8	-5.1	-4.2	-4.3	-3.3	-2.1
6H	-14.4	-13.5	-13.5	-12.6	-11.4	-1.8	-0.9	-0.9	0.0	1.2
8H	-14.0	-13.2	-13.1	-12.3	-11.1	0.1	0.9	1.0	1.9	3.1
12H	-13.5	-12.7	-12.5	-11.8	-10.6	2.2	2.9	3.1	3.8	5.1
12H 4H	-12.3	-11.4	-11.4	-10.4	-9.2	-5.2	-4.3	-4.4	-3.4	-2.2
6H	-11.6	-10.8	-10.7	-9.9	-8.7	-1.8	-1.0	-0.9	-0.1	1.1
8H	-11.3	-10.6	-10.4	-9.7	-8.4	0.2	0.9	1.1	1.9	3.1
Variations with the observer position at spacings(CIE Pub.117):										
S = 1.0H	+ 0.1 / - 0.1					+ 0.1 / - 0.1				
1.5H	+ 0.3 / - 0.1					+ 0.3 / - 0.3				
2.0H	+ 0.6 / - 0.6					+ 0.3 / - 0.4				

CIE Pub.117, 857.2 lm Total Lamp Luminous Flux Correct (8log(F/F0) = -0.5)
 Area: 0.245 m2

C Range: 0 - 360DEG
 C Interval: 22.5DEG
 Test Speed: HIGH
 Temperature:25.3℃
 Operators:DAMIN
 Test Date:2023-11-16

γ Range: 0 - 180DEG
 γ Interval: 5.0DEG
 Test System:EVERFINE GO-2000B_V1 SYSTEM V2.00.473
 Humidity:65.0%
 Test Distance:9.401m [K=1.0000]
 Remarks:

UTILIZATION FACTORS TABLE

Test:U:220.35V I:0.0801A P:10.340W PF:0.5857 Freq:50.00Hz Lamp Flux:857.166x1 lm		
NAME: 壁灯	TYPE: W系列	WEIGHT:
SPEC.:	DIM.:	SERIAL No.:
MFR.: EVERFINE	SUR.: 156.5mm	Shielding Angle:

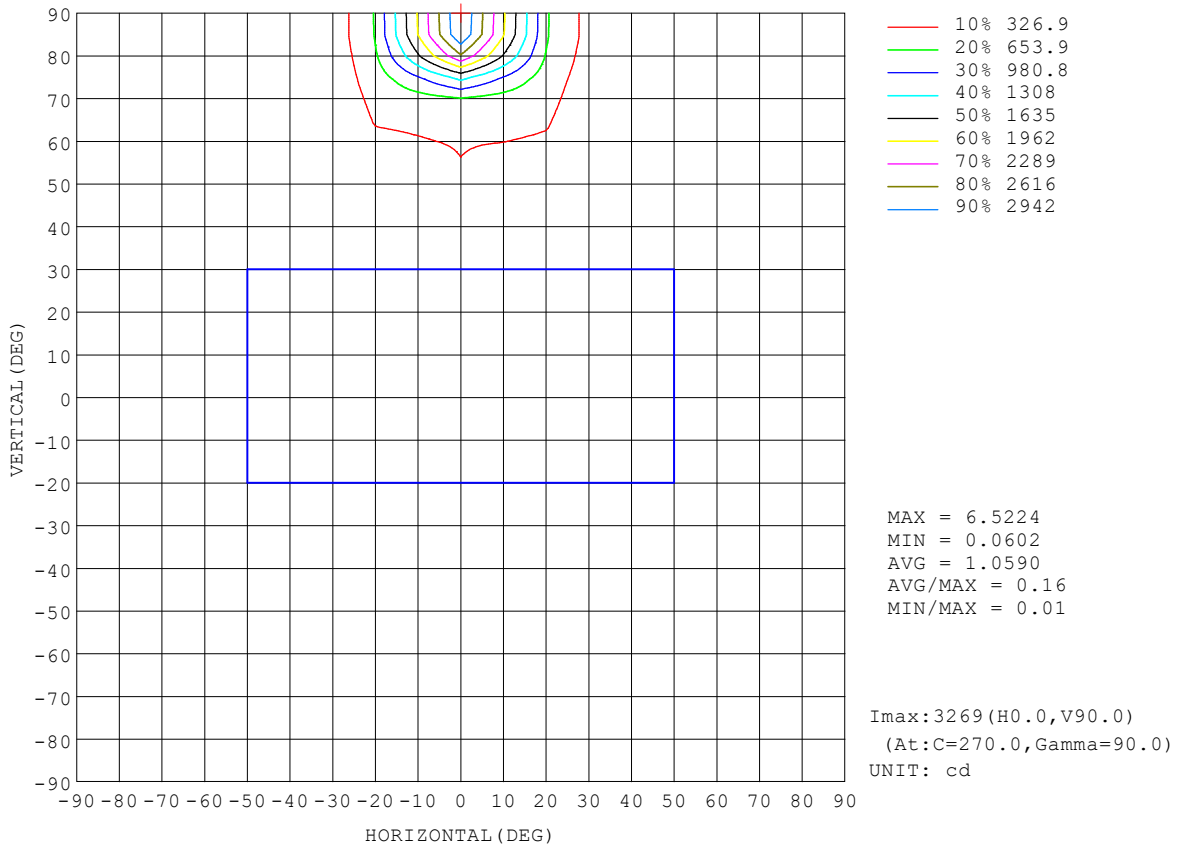
REFLECTANCE										
Ceiling	0.8	0.8	0.8	0.7	0.7	0.7	0.5	0.5	0.5	0
Walls	0.7	0.5	0.3	0.7	0.5	0.3	0.7	0.5	0.3	0
Working plane	0.2	0.2	0.2	0.2	0.2	0.2	0.2	0.2	0.2	0
ROOM INDEX	UTILIZATION FACTORS (PERCENT) $k(RI) \times RCR = 5$									
k = 0.60	31	16	8	29	16	8	27	15	7	0
0.80	37	21	11	35	20	10	32	18	10	1
1.00	43	25	14	40	24	13	36	25	12	2
1.25	48	30	18	45	28	17	40	26	15	3
1.50	53	34	21	50	32	20	44	29	18	5
2.00	60	42	28	56	39	27	49	35	24	8
2.50	66	48	34	61	45	32	53	40	29	11
3.00	70	53	40	65	50	37	56	43	33	14
4.00	76	61	48	71	57	45	61	50	40	19
5.00	81	67	55	75	62	51	64	54	45	23
ROOM INDEX	UF(total)									Direct
According to DIN EN 13032-2 2004			Suspended				SHRNOM = 1.25			

C Range: 0 - 360DEG
 C Interval: 22.5DEG
 Test Speed: HIGH
 Temperature: 25.3°C
 Operators: DAMIN
 Test Date: 2023-11-16

γ Range: 0 - 180DEG
 γ Interval: 5.0DEG
 Test System: EVERFINE GO-2000B_V1 SYSTEM V2.00.473
 Humidity: 65.0%
 Test Distance: 9.401m [K=1.0000]
 Remarks:

ISOCANDELA DIAGRAM

Test:U:220.35V I:0.0801A P:10.340W PF:0.5857 Freq:50.00Hz Lamp Flux:857.166x1 lm		
NAME: 壁灯	TYPE: W系列	WEIGHT:
SPEC.:	DIM.:	SERIAL No.:
MFR.: EVERFINE	SUR.: 156.5mm	Shielding Angle:

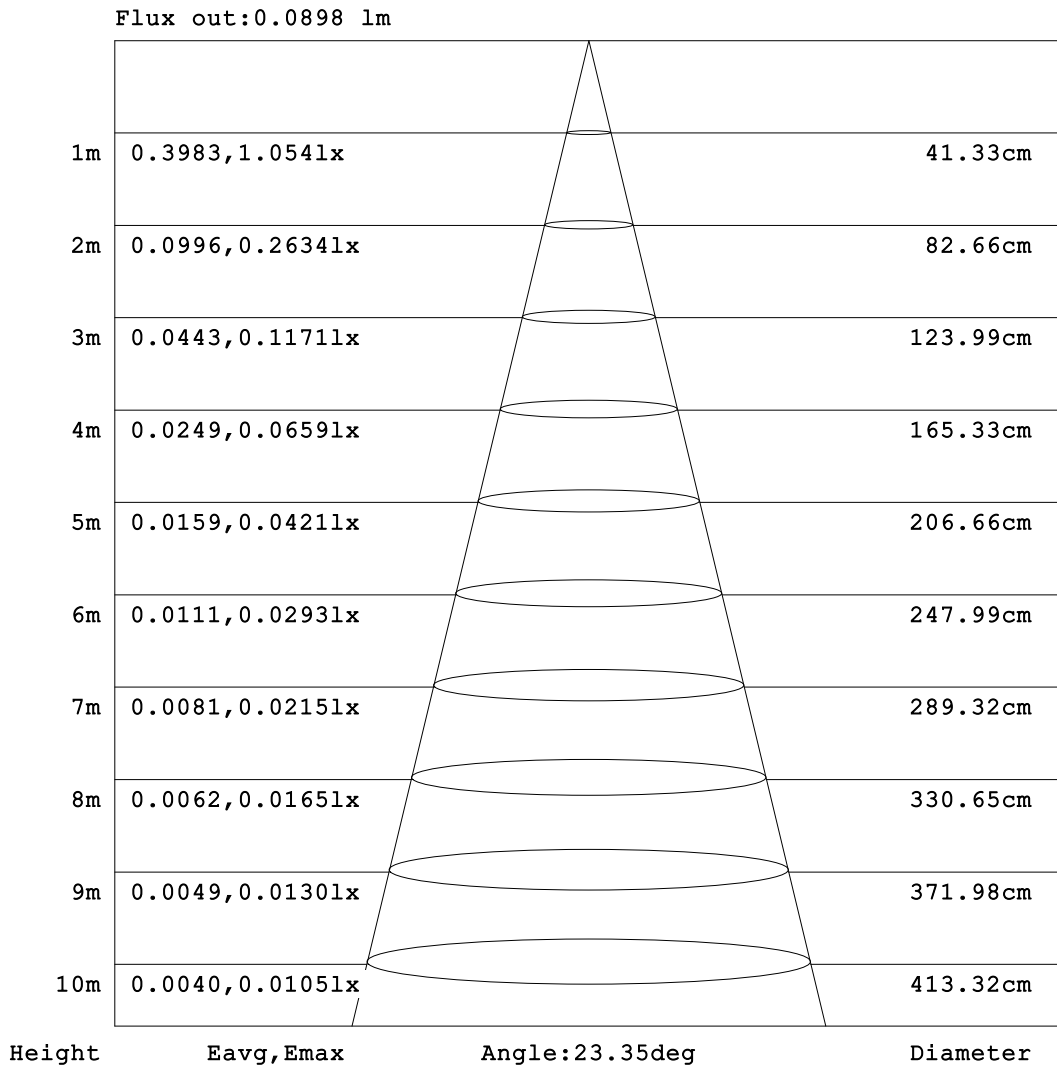


C Range: 0 - 360DEG
 C Interval: 22.5DEG
 Test Speed: HIGH
 Temperature:25.3°C
 Operators:DAMIN
 Test Date:2023-11-16

γ Range: 0 - 180DEG
 γ Interval: 5.0DEG
 Test System:EVERFINE GO-2000B_V1 SYSTEM V2.00.473
 Humidity:65.0%
 Test Distance:9.401m [K=1.0000]
 Remarks:

AAI Figure

Test:U:220.35V I:0.0801A P:10.340W PF:0.5857 Freq:50.00Hz Lamp Flux:857.166x1 lm		
NAME: 壁灯	TYPE: W系列	WEIGHT:
SPEC.:	DIM.:	SERIAL No.:
MFR.: EVERFINE	SUR.: 156.5mm	Shielding Angle:



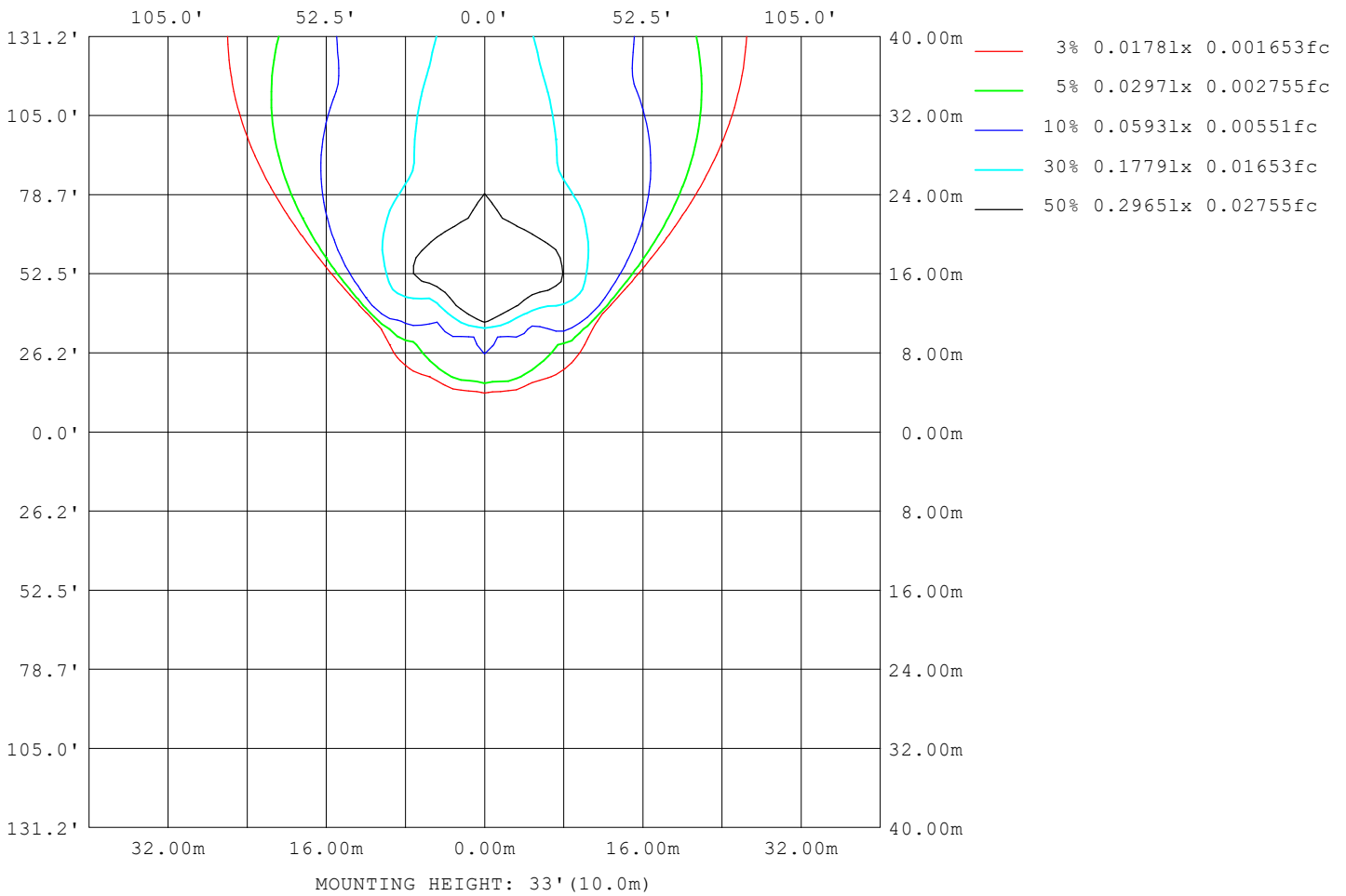
Note:The Curves indicate the illuminated area and the average illumination when the luminaire is at different distance.

C Range: 0 - 360DEG
C Interval: 22.5DEG
Test Speed: HIGH
Temperature:25.3°C
Operators:DAMIN
Test Date:2023-11-16

γ Range: 0 - 180DEG
γ Interval: 5.0DEG
Test System:EVERFINE GO-2000B_V1 SYSTEM V2.00.473
Humidity:65.0%
Test Distance:9.401m [K=1.0000]
Remarks:

ISOLUX DIAGRAM

Test:U:220.35V I:0.0801A P:10.340W PF:0.5857 Freq:50.00Hz Lamp Flux:857.166x1 lm		
NAME: 壁灯	TYPE: W系列	WEIGHT:
SPEC.:	DIM.:	SERIAL No.:
MFR.: EVERFINE	SUR.: 156.5mm	Shielding Angle:



C Range: 0 - 360DEG
 C Interval: 22.5DEG
 Test Speed: HIGH
 Temperature: 25.3°C
 Operators: DAMIN
 Test Date: 2023-11-16

γ Range: 0 - 180DEG
 γ Interval: 5.0DEG
 Test System: EVERFINE GO-2000B_V1 SYSTEM V2.00.473
 Humidity: 65.0%
 Test Distance: 9.401m [K=1.0000]
 Remarks:

LED Avg.L Report

Test:U:220.35V I:0.0801A P:10.340W PF:0.5857 Freq:50.00Hz Lamp Flux:857.166x1 lm		
NAME: 壁灯	TYPE: W系列	WEIGHT:
SPEC.:	DIM.:	SERIAL No.:
MFR.: EVERFINE	SUR.: 156.5mm	Shielding Angle:

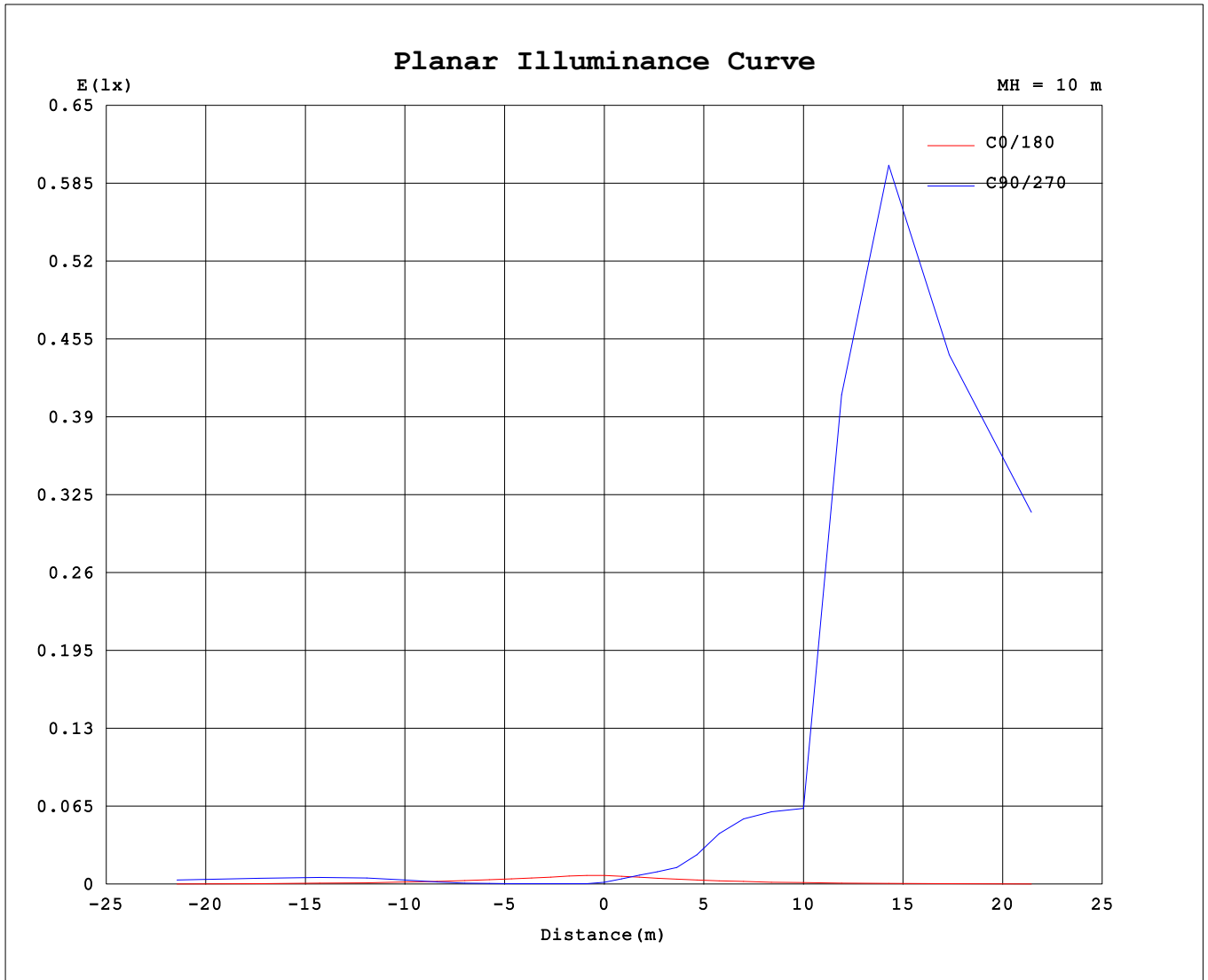
AvgL	cd/m2
L_0~180 (65) av	2
L_0~180 (75) av	3
L_0~180 (85) av	8
L_90~270 (65) av	3291
L_90~270 (75) av	18555
L_90~270 (85) av	124449
L_45 (65) av	84
L_45 (75) av	160
L_45 (85) av	504

Standard: GB/T 29293-2012

C Range: 0 - 360DEG
 C Interval: 22.5DEG
 Test Speed: HIGH
 Temperature:25.3℃
 Operators:DAMIN
 Test Date:2023-11-16

γ Range: 0 - 180DEG
 γ Interval: 5.0DEG
 Test System:EVERFINE GO-2000B_V1 SYSTEM V2.00.473
 Humidity:65.0%
 Test Distance:9.401m [K=1.0000]
 Remarks:

Planar Illuminance Curve



C Range: 0 - 360DEG
 C Interval: 22.5DEG
 Test Speed: HIGH
 Temperature: 25.3°C
 Operators: DAMIN
 Test Date: 2023-11-16

γ Range: 0 - 180DEG
 γ Interval: 5.0DEG
 Test System: EVERFINE GO-2000B_V1 SYSTEM V2.00.473
 Humidity: 65.0%
 Test Distance: 9.401m [K=1.0000]
 Remarks:

LUMINOUS DISTRIBUTION INTENSITY DATA

Test:U:220.35V I:0.0801A P:10.340W PF:0.5857 Freq:50.00Hz Lamp Flux:857.166x1 lm		
NAME: 壁灯	TYPE: W系列	WEIGHT:
SPEC.:	DIM.:	SERIAL No.:
MFR.: EVERFINE	SUR.: 156.5mm	Shielding Angle:

Table--1

UNIT: cd

C (DEG) \ γ (DEG)	0	22.5	45	67.5	90	112.5	135	157.5	180	202.5	225	247.5	270	292.5	315	337.5			
0	0.28	0.28	0.28	0.28	0.28	0.28	0.28	0.28	0.28	0.28	0.28	0.28	0.28	0.28	0.28	0.28			
5	0.28	0.19	0.15	0.21	0.10	0.15	0.10	0.16	0.26	0.34	0.50	1.04	0.76	0.99	0.59	0.48			
10	0.27	0.14	0.14	0.23	0.10	0.20	0.10	0.16	0.24	0.41	0.76	1.88	1.31	1.79	0.94	0.68			
15	0.25	0.09	0.12	0.28	0.10	0.23	0.10	0.16	0.21	0.48	1.03	2.81	1.91	2.67	1.30	0.91			
20	0.24	0.07	0.12	0.36	0.12	0.26	0.10	0.16	0.20	0.55	1.31	3.85	2.79	3.70	1.70	1.12			
25	0.23	0.07	0.12	0.38	0.13	0.29	0.10	0.16	0.18	0.63	1.62	6.49	5.46	6.45	2.12	1.33			
30	0.22	0.07	0.12	0.49	0.21	0.40	0.10	0.16	0.17	0.71	2.06	12.78	10.68	12.77	2.83	1.53			
35	0.21	0.07	0.12	0.65	0.32	0.46	0.10	0.17	0.16	0.79	3.01	21.20	16.30	20.95	4.38	1.74			
40	0.21	0.07	0.16	1.14	0.74	0.79	0.15	0.19	0.15	0.85	4.64	29.0	22.1	28.6	6.88	1.95			
45	0.20	0.07	0.24	2.16	1.73	1.39	0.23	0.21	0.15	0.93	6.68	37.4	29.4	37.1	9.87	2.17			
50	0.20	0.07	0.35	3.86	3.27	2.48	0.37	0.24	0.15	1.00	8.78	47.9	252	49.2	12.83	2.37			
55	0.19	0.08	0.49	6.07	5.02	4.17	0.49	0.27	0.15	1.07	10.55	199	521	290	15.4	2.61			
60	0.19	0.08	0.65	8.42	6.68	6.20	0.67	0.30	0.15	1.13	12.0	701	579	760	17.6	2.84			
65	0.19	0.09	0.80	10.49	7.90	8.33	0.90	0.34	0.15	1.19	13.3	879	674	848	19.9	3.07			
70	0.19	0.09	0.96	12.06	8.71	10.25	1.16	0.39	0.15	1.24	14.4	930	1057	908	21.7	3.31			
75	0.19	0.10	1.10	13.12	9.25	11.75	1.46	0.43	0.15	1.29	15.2	986	2344	966	22.9	3.51			
80	0.19	0.11	1.23	13.63	9.58	12.64	1.77	0.48	0.15	1.32	15.6	1027	4236	1034	23.8	3.61			
85	0.18	0.11	1.32	14.07	9.68	13.29	2.01	0.50	0.15	1.32	15.7	1058	5305	1085	24.0	3.64			
90	0.18	0.11	1.33	13.46	9.71	12.93	2.13	0.51	0.15	1.32	15.4	1053	5354	1077	23.6	3.64			
95	0.18	0.11	1.32	13.27	8.96	12.80	2.22	0.52	0.15	1.25	14.8	1021	4338	1020	22.8	3.47			
100	0.18	0.11	1.40	12.76	8.22	12.70	2.43	0.52	0.15	0.97	13.6	971	2377	945	21.0	2.75			
105	0.18	0.11	1.47	12.82	8.40	13.16	2.44	0.52	0.14	0.62	9.99	891	963	857	14.64	1.79			
110	0.17	0.11	1.42	10.93	7.83	12.78	2.41	0.52	0.14	0.49	5.84	43.5	65.4	57.4	8.17	1.23			
115	0.17	0.12	1.22	8.45	7.00	11.28	2.22	0.53	0.13	0.54	2.90	257	34.2	155	4.11	1.21			
120	0.16	0.10	1.01	6.80	5.53	9.87	1.98	0.50	0.13	0.56	2.90	12.26	10.60	26.3	4.98	1.30			
125	0.15	0.10	0.95	6.46	5.69	8.87	1.62	0.48	0.12	0.52	4.78	14.87	154	20.47	7.66	1.29			
130	0.15	0.07	0.69	4.34	4.04	5.58	1.24	0.42	0.12	0.45	4.65	18.51	14.86	22.35	7.11	1.29			
135	0.14	0.05	0.53	3.70	4.40	3.88	1.03	0.32	0.11	0.39	3.45	21.16	14.97	21.37	5.22	0.98			
140	0.14	0.04	0.40	2.74	2.52	2.66	0.79	0.21	0.11	0.33	2.18	17.89	13.86	17.85	3.22	0.17			
145	0.14	0.04	0.33	1.78	1.63	1.88	0.57	0.16	0.10	0.30	1.31	10.98	10.06	11.00	1.05	0.11			
150	0.14	0.04	0.26	1.40	1.15	1.34	0.40	0.11	0.10	0.27	0.45	3.86	5.16	3.22	0.80	0.09			
155	0.14	0.04	0.22	0.99	0.81	0.74	0.28	0.03	0.10	0.25	0.61	0.69	1.21	0.48	0.76	0.08			
160	0.14	0.04	0.16	0.54	0.45	0.32	0.17	0.01	0.08	0.24	0.07	1.84	1.71	1.03	0.00	0.08			
165	0.14	0.07	0.08	0.16	0.20	0.02	0.10	0.00	0.08	0.22	0.07	0.00	0.03	0.00	0.00	0.06			
170	0.14	0.12	0.05	0.00	0.02	0.00	0.07	0.00	0.08	0.20	0.08	0.00	0.07	0.00	0.00	0.06			
175	0.13	0.16	0.04	0.00	0.00	0.00	0.02	0.00	0.08	0.19	0.05	0.10	0.00	0.05	0.00	0.06			
180	0.10	0.18	0.04	0.00	0.00	0.00	0.00	0.00	0.08	0.18	0.05	0.00	0.00	0.00	0.00	0.04			

C Range: 0 - 360DEG
 C Interval: 22.5DEG
 Test Speed: HIGH
 Temperature:25.3℃
 Operators:DAMIN
 Test Date:2023-11-16

γ Range: 0 - 180DEG
 γ Interval: 5.0DEG
 Test System:EVERFINE GO-2000B_V1 SYSTEM V2.00.473
 Humidity:65.0%
 Test Distance:9.401m [K=1.0000]
 Remarks: